

COPY

Jones County Marie Krutzfield Recorder
 Fee Book 2012 1418
 05/17/2012 @1049AM # Pages 2
 ZSC SEC COR CERT
 Total Fees: \$0.00

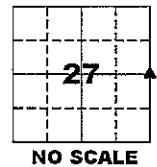
PREPARED BY
 CLARENCE J. WALTON, JONES COUNTY ENGINEER'S OFFICE, 19501 HWY. 64, ANAMOSA, IOWA, 52205 (319) 462-3785

UNITED STATES PUBLIC LAND SURVEY CORNER CERTIFICATE

LAND SURVEY MONUMENTS SITUATED IN SECTION 27, TOWNSHIP 86 NORTH, RANGE 2 WEST OF THE 5TH PRINCIPAL MERIDIAN, JONES COUNTY, IOWA.

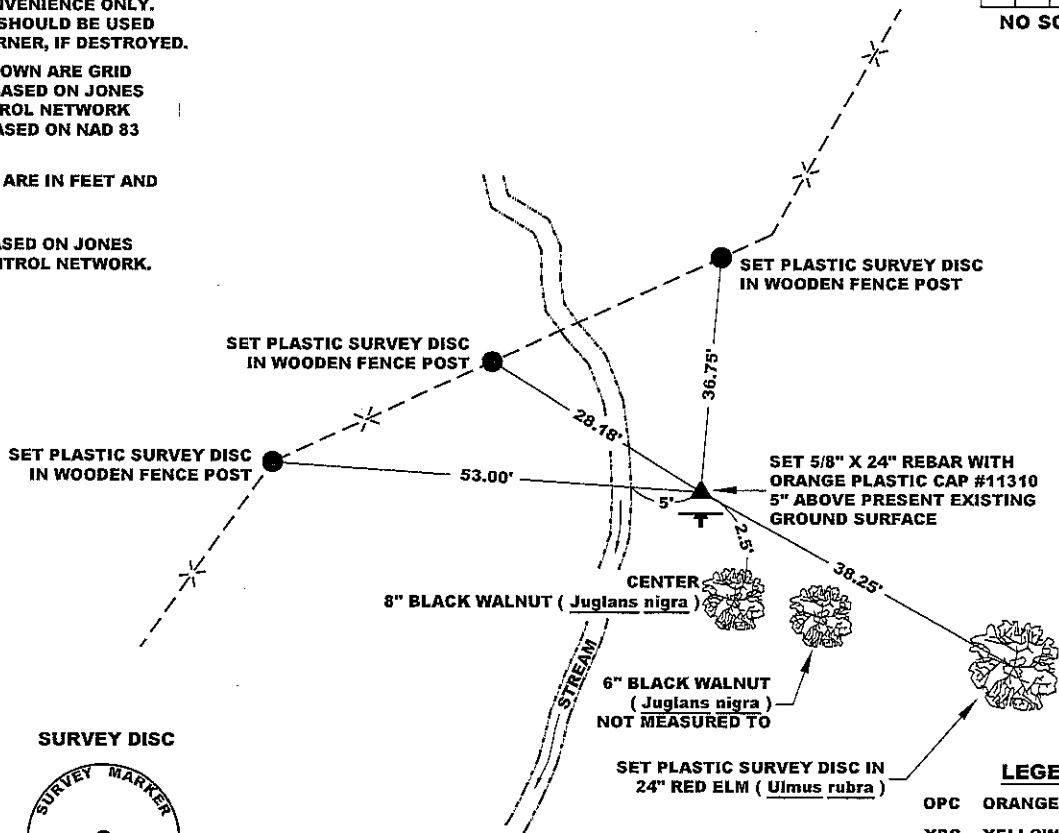
STATE PLANE COORDINATE
 NAD 83 IOWA NORTH
 N 3556750.00
 E 5583699.58

CORNER SECTION TOWNSHIP RANGE
 E 1/4 CORNER 27 T86N R2W

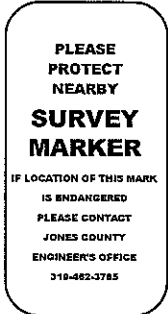


NOTES:

- 1) THE STATE PLANE COORDINATES AS SHOWN ARE FOR CONVENIENCE ONLY. THE TIES AS SHOWN SHOULD BE USED TO REPLACE THE CORNER, IF DESTROYED.
- 2) COORDINATES AS SHOWN ARE GRID COORDINATES AND BASED ON JONES COUNTY G.P.S. CONTROL NETWORK WHICH IN TURN IS BASED ON NAD 83 IOWA NORTH DATUM.
- 3) ALL MEASUREMENTS ARE IN FEET AND DECIMALS THEREOF.
- 4) * GRID DISTANCE, BASED ON JONES COUNTY G.P.S. CONTROL NETWORK.



"SURVEY MARKER" SIGN



SURVEY DISC



LEGEND

- OPC ORANGE PLASTIC CAP
- YPC YELLOW PLASTIC CAP
- () PREVIOUSLY RECORDED AS
- STEEL FENCE POST W/ "SURVEY MARKER" SIGN

PREVIOUSLY RECORDED IN N/A
PAGE 1 of 2
 MONUMENT DESCRIPTION AND HOW ESTABLISHED SET 5/8" X 24" REBAR WITH ORANGE PLASTIC CAP # 11310 5" ABOVE PRESENT EXISTING GROUND SURFACE ON LINE BETWEEN THE SE CORNER AND THE NE CORNER OF SECTION 27-T86N-R2W AND IN LINE OF OLD FENCE FROM EAST. SET STEEL FENCE POST WITH "SURVEY MARKER" SIGN APPROXIMATELY 6" SOUTH OF REBAR AS A WITNESS TO THE CORNER. THIS POINT IS IN A "HOLE" AND CAN BE DIFFICULT TO SHOOT IN WITH G.P.S. BE PREPARED TO USE ALTERNATIVE MEANS OF TYING THIS CORNER DOWN.

FIELD BOOK 341, PAGE 53 DATE OF SURVEY: 4/26/12



I hereby certify that this land surveying document and the related survey work was performed by me or under my direct personal supervision and that I am a duly registered Land Surveyor under the laws of the State of Iowa.
 Signed: *Clarence J. Walton* 5/16/12
 Clarence J. Walton, L.S.
 My Registration Renewal Date is December 31, 2013
 Iowa License Number 11310
 Pages or sheets covered by this seal: 1 of 2.

- A. THERE IS NO CERTIFICATE FOR THE CORNER ON FILE WITH THE RECORDER OF THE COUNTY IN WHICH THE CORNER IS LOCATED.
- B. THE CORNER MONUMENT HAS BEEN REPLACED OR MODIFIED.
- C. THE SURVEYOR IN RESPONSIBLE CHARGE OF THE LAND SURVEYING ACCEPTS A CORNER POSITION THAT DIFFERS FROM THAT SHOWN IN IN THE PUBLIC RECORDS OF THE COUNTY IN WHICH THE CORNER IS LOCATED.
- D. THE REFERENCE TIES REFERRED TO IN AN EXISTING PUBLIC RECORD NO LONGER EXIST.
- E. THIS CERTIFICATE FILED TO CORRECT PREVIOUS CERTIFICATE.

CORNER	CORNERS TO BE INDEXED		
	SECTION	TOWNSHIP	RANGE
E 1/4 CORNER	27	86N	2W
W 1/4 CORNER	26	86N	2W

JONES COUNTY ENGINEER'S OFFICE



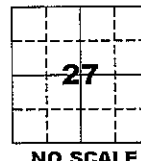
19501 HWY. 64, ANAMOSA, IOWA 52205
 (319) 462-3785

UNITED STATES PUBLIC LAND SURVEY CORNER CERTIFICATE

LAND SURVEY MONUMENTS SITUATED IN SECTION 27, TOWNSHIP 86 NORTH, RANGE 2 WEST OF THE 5TH PRINCIPAL MERIDIAN, JONES COUNTY, IOWA.

STATE PLANE COORDINATE
NAD 83 IOWA NORTH
N 3556750.00
E 5583699.58

CORNER SECTION TOWNSHIP RANGE
E 1/4 CORNER 27 T86N R2W



NE CORNER SECTION 27-T86N-R2W
5/8" X 24" REBAR WITH OPC # 11310
CORNER CERTIFICATE WILL BE FILED AT TIME THIS CERTIFICATE IS FILED

NO SCALE

NOTES:

- 1) THE STATE PLANE COORDINATES AS SHOWN ARE FOR CONVENIENCE ONLY. THE TIES AS SHOWN SHOULD BE USED TO REPLACE THE CORNER, IF DESTROYED.
- 2) COORDINATES AS SHOWN ARE GRID COORDINATES AND BASED ON JONES COUNTY G.P.S. CONTROL NETWORK WHICH IN TURN IS BASED ON NAD 83 IOWA NORTH DATUM.
- 3) ALL MEASUREMENTS ARE IN FEET AND DECIMALS THEREOF.
- 4) * GRID DISTANCE, BASED ON JONES COUNTY G.P.S. CONTROL NETWORK.

LEGEND

- OPC ORANGE PLASTIC CAP
- YPC YELLOW PLASTIC CAP
- () PREVIOUSLY RECORDED AS
- STEEL FENCE POST W/ "SURVEY MARKER" SIGN

SECTION LINE (AS LABELED)

FENCE LINE

LIMESTONE BLUFF

"SURVEY MARKER" SIGN

PLEASE PROTECT NEARBY

SURVEY MARKER

IF LOCATION OF THIS MARK IS ENDANGERED PLEASE CONTACT JONES COUNTY ENGINEER'S OFFICE 319-462-3785

SURVEY DISC



EAST LINE NE 1/4 SECTION 27-T86N-R2W
S00°09'28"E 2848.88'

EAST LINE SE 1/4 SECTION 27-T86N-R2W
N00°09'29"W 2670.85'

E 1/4 CORNER SECTION 27-T86N-R2W
5/8" X 24" REBAR WITH ORANGE PLASTIC CAP #11310

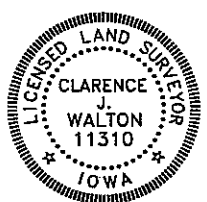
SE CORNER SECTION 27-T86N-R2W
5/8" REBAR WITH OPC # 8295
RECORDER'S DOCUMENT 2011 3192

PREVIOUSLY RECORDED IN N/A

MONUMENT DESCRIPTION AND HOW ESTABLISHED SET 5/8" X 24" REBAR WITH ORANGE PLASTIC CAP # 11310 5" ABOVE PRESENT EXISTING GROUND SURFACE ON LINE BETWEEN THE SE CORNER AND THE NE CORNER OF SECTION 27-T86N-R2W AND IN LINE OF OLD FENCE FROM EAST. SET STEEL FENCE POST WITH "SURVEY MARKER" SIGN APPROXIMATELY 6" SOUTH OF REBAR AS A WITNESS TO THE CORNER. THIS POINT IS IN A "HOLE" AND CAN BE DIFFICULT TO SHOOT IN WITH G.P.S. BE PREPARED TO USE ALTERNATIVE MEANS OF TYING THIS CORNER DOWN.

FIELD BOOK 341, PAGE 53 DATE OF SURVEY: 4/26/12

PAGE 2 of 2



I hereby certify that this land surveying document and the related survey work was performed by me or under my direct personal supervision and that I am a duly registered Land Surveyor under the laws of the State of Iowa.

Signed: *Clarence J. Walton* 5/16/12
Clarence J. Walton, L.S.
My Registration Renewal Date is December 31, 2013
Iowa License Number 11310
Pages or sheets covered by this seal: 2 of 2.

- A. THERE IS NO CERTIFICATE FOR THE CORNER ON FILE WITH THE RECORDER OF THE COUNTY IN WHICH THE CORNER IS LOCATED.
- B. THE CORNER MONUMENT HAS BEEN REPLACED OR MODIFIED.
- C. THE SURVEYOR IN RESPONSIBLE CHARGE OF THE LAND SURVEYING ACCEPTS A CORNER POSITION THAT DIFFERS FROM THAT SHOWN IN THE PUBLIC RECORDS OF THE COUNTY IN WHICH THE CORNER IS LOCATED.
- D. THE REFERENCE TIES REFERRED TO IN AN EXISTING PUBLIC RECORD NO LONGER EXIST.
- E. THIS CERTIFICATE FILED TO CORRECT PREVIOUS CERTIFICATE.

JONES COUNTY ENGINEER'S OFFICE



19501 HWY. 64, ANAMOSA, IOWA 52205
(319) 462-3785

CORNER	CORNERS TO BE INDEXED SECTION	TOWNSHIP	RANGE
E 1/4 CORNER	27	86N	2W
W 1/4 CORNER	26	86N	2W