

COPY

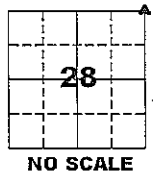
☐☐  
 Jones County Marie Krutzfield Recorder  
 Fee Book 2011 3194  
 12/14/2011 @1135AM # Pages 2  
 ZSC SEC COR CERT  
 Total Fees: \$0.00

PREPARED BY  
 CLARENCE J. WALTON, JONES COUNTY ENGINEER'S OFFICE, 19501 HWY. 64, ANAMOSA, IOWA, 52205 (319) 462-3785

# UNITED STATES PUBLIC LAND SURVEY CORNER CERTIFICATE

LAND SURVEY MONUMENTS SITUATED IN SECTION 28, TOWNSHIP 86 NORTH,  
 RANGE 2 WEST OF THE 5TH PRINCIPAL MERIDIAN, JONES COUNTY, IOWA.

## SURVEYOR'S NARRATIVE



Tied out fence corner, fence lines, calls for natural features in the field notes of the original survey, and One 5/8" rebar set by Thomas Anthony, LS #8295 at the E 1/4 corner of Section 28-T86N-R2W and from thence to the NE corner of Section 21-T86N-R2W. Talked with the land owners and garnered the fact that said E 1/4 corner could be relied upon, which proved to be true.

The position of said E 1/4 checked extremely well with a call from the original survey's field notes (page 49: "North Bet. Sect. 27 & 28") which states that at 46.50 chains (or 6.50 chains north of the E 1/4 corner) the surveyors started to "descend bluff". Indeed they did as did we and within a few feet of the prescribed distance from Anthony's rebar to a pronounced drop off.

The overall distance from Anthony's corner to the fence corner at what I presumed to be the NE corner of said Section 28 was 2954.66 feet in contrast with 2640 feet per the original government survey field notes. At the presumed NE corner the fence lines ran south and approximately S 6° W. This was somewhat of a surprise, but not unusual for northeastern Jones County. I'm rather uncertain what goes on with the east west lines running off in a N 6° E manner, perhaps the compass man neglected to compensate for the magnetic deviation of the needle, improper running of the random lines, fraudulent field notes, or your choice. It is very apparent that there were, at least, two surveyors taking notes. One surveyor made few if any entries in the line notes other than that of setting corners and referencing bearing trees. Other notes will make reference to small streams, ascent and descent of bluffs, entering prairie, river bottom, or the like. The latter notes, will usually fit with what is found in the field.

I accepted an existing fence corner as best evidence where the NE corner of said Section 28 was by reason that the distances of "37.90 chains" to a "brook 4 lks. S.W." and "38.80 chains" to "ascend bluff" proved to be extremely close to what we measured. (The reader will please refer to the corner certificate for the E 1/4 corner of Section 21 for a detailed narrative of these calls. As to the longer than called for distance from the E 1/4 corner of said Section 28, it is to be noted that there is a kink in the north line of said Section 28 in the vicinity of the N 1/4 corner which would explain the overage in distance.

Page 1 of 2



I hereby certify that this land surveying document and the related survey work was performed by me or under my direct personal supervision and that I am a duly registered Land Surveyor under the laws of the State of Iowa.  
 Signed:

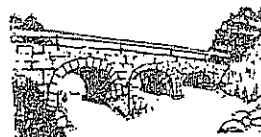
Clarence J. Walton, L.S.  
 My Registration Renewal Date is December 31, 2011  
 Iowa License Number 11310  
 Pages or sheets covered by this seal: 1 of 1.

- A. THERE IS NO CERTIFICATE FOR THE CORNER ON FILE WITH THE RECORDER OF THE COUNTY IN WHICH THE CORNER IS LOCATED.
- B. THE CORNER MONUMENT HAS BEEN REPLACED OR MODIFIED.
- C. THE SURVEYOR IN RESPONSIBLE CHARGE OF THE LAND SURVEYING ACCEPTS A CORNER POSITION THAT DIFFERS FROM THAT SHOWN IN THE PUBLIC RECORDS OF THE COUNTY IN WHICH THE CORNER IS LOCATED.
- D. THE REFERENCE TIES REFERRED TO IN AN EXISTING PUBLIC RECORD NO LONGER EXIST.
- E. EXISTING CORNER TIES UPDATED.

### CORNERS TO BE INDEXED

CORNER	SECTION	TOWNSHIP	RANGE
NE CORNER	28	86N	2W
SE CORNER	21	86N	2W
SW CORNER	22	86N	2W
NW CORNER	27	86N	2W

### JONES COUNTY ENGINEER'S OFFICE



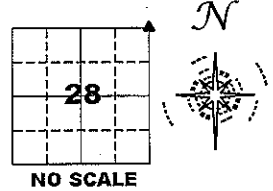
19501 HWY. 64, ANAMOSA, IOWA 52205  
 (319) 462-3785

# UNITED STATES PUBLIC LAND SURVEY CORNER CERTIFICATE

LAND SURVEY MONUMENTS SITUATED IN SECTION 28, TOWNSHIP 86 NORTH,  
 RANGE 2 WEST OF THE 5TH PRINCIPAL MERIDIAN, JONES COUNTY, IOWA.

STATE PLANE COORDINATE  
 NAD 83 IOWA NORTH  
 N 3559324.30  
 E 5578699.80

CORNER SECTION TOWNSHIP RANGE  
 NE CORNER 28 T86N R2W



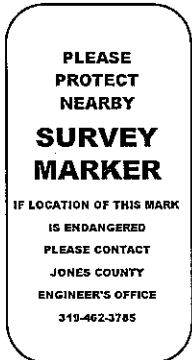
NOTES:

- 1) THE STATE PLANE COORDINATES AS SHOWN ARE FOR CONVENIENCE ONLY. THE TIES AS SHOWN SHOULD BE USED TO REPLACE THE CORNER, IF DESTROYED.
- 2) COORDINATES AS SHOWN ARE GRID COORDINATES AND BASED ON JONES COUNTY G.P.S. CONTROL NETWORK WHICH IN TURN IS BASED ON NAD 83 IOWA NORTH DATUM.
- 3) ALL MEASUREMENTS ARE IN FEET AND DECIMALS THEREOF.
- 4) \* GRID DISTANCE, BASED ON JONES COUNTY G.P.S. CONTROL NETWORK.
- 5) \*\* SEE PAGE 1 OF 2 FOR DETAILED NARRATIVE .

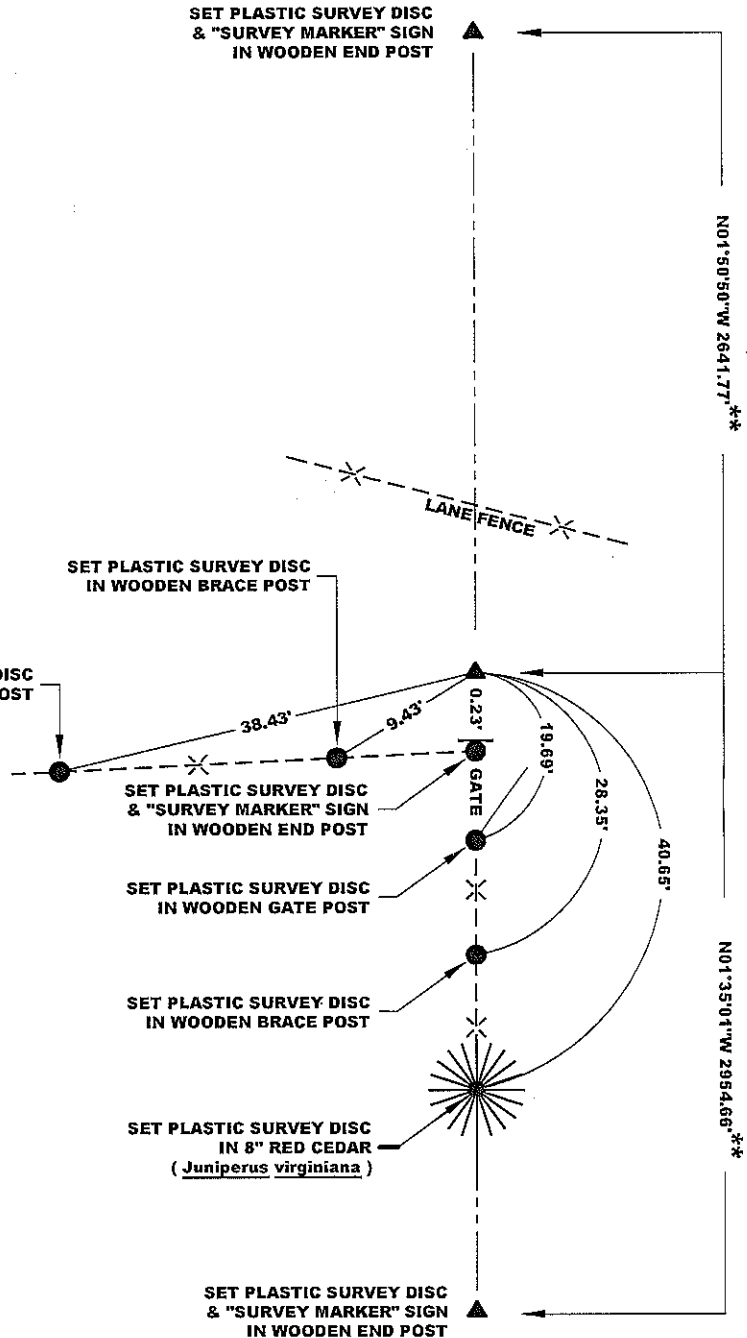
LEGEND

OPC ORANGE PLASTIC CAP  
 ( ) RECORDED AS

"SURVEY MARKER" SIGN



SURVEY DISC



Page 2 of 2

PREVIOUSLY RECORDED IN N/A

MONUMENT DESCRIPTION AND HOW ESTABLISHED PROBED AROUND FOUND FENCE CORNER AND FOUND NO MONUMENTATION OTHER THAN WOODEN FENCE CORNER POST. DISTANCE TO CALLS ON BROOK AND ASCENSION OF BLUFF CHECK NEARLY SPOT ON FENCE LINE COMES IN FROM ROUGHLY S 6' W. SEE PAGE 1 OF 2 FOR FURTHER EXPLANATION. SET 5/8" X 24" REBAR ON NORTH SIDE OF END POST. FENCE LINE ALSO RUNS TO SOUTH. SET "SURVEY MARKER" SIGN ON NORTH SIDE OF POST AS A WITNESS TO THE CORNER. ALSO, SEE CORNER CERTIFICATE FOR THE E 1/4 CORNER SECTION 21-T86N-R2W FOR MORE DETAIL.

FIELD BOOK 341, PAGE 76. DATE OF SURVEY: 10/20/11



I hereby certify that this land surveying document and the related survey work was performed by me or under my direct personal supervision and that I am a duly registered Land Surveyor under the laws of the State of Iowa.

Signed: *Clarence J. Walton* 14 Dec 11  
 Clarence J. Walton, L.S.  
 My Registration Renewal Date is December 31, 2011  
 Iowa License Number 11310  
 Pages or sheets covered by this seal: 2 of 2.

- A. THERE IS NO CERTIFICATE FOR THE CORNER ON FILE WITH THE RECORDER OF THE COUNTY IN WHICH THE CORNER IS LOCATED.
- B. THE CORNER MONUMENT HAS BEEN REPLACED OR MODIFIED.
- C. THE SURVEYOR IN RESPONSIBLE CHARGE OF THE LAND SURVEYING ACCEPTS A CORNER POSITION THAT DIFFERS FROM THAT SHOWN IN THE PUBLIC RECORDS OF THE COUNTY IN WHICH THE CORNER IS LOCATED.
- D. THE REFERENCE TIES REFERRED TO IN AN EXISTING PUBLIC RECORD NO LONGER EXIST.
- E. EXISTING CORNER TIES UPDATED.

CORNERS TO BE INDEXED

CORNER	SECTION	TOWNSHIP	RANGE
NE CORNER	28	86N	2W
SE CORNER	21	86N	2W
SW CORNER	22	86N	2W
NW CORNER	27	86N	2W

JONES COUNTY ENGINEER'S OFFICE



19501 HWY. 64, ANAMOSA, IOWA 52205  
 (319) 462-3785