

2004 4353

FILED
RECORDERS OFFICE
JONES COUNTY IOWA

A

04 NOV 19 AM 10:44

MARIE KRUTZFIELD
RECORDER 7.00Pd

Prepared by Wm. Burger Land Surveyors

510 3rd Street West Court, Worthington, Iowa

Phone 563 - 855 2028

UNITED STATES PUBLIC LAND SURVEY CORNER CERTIFICATE

Land Survey Monuments situated in Section 2, Township 86N, Range 2W, of the Fifth Principal Meridian, Jones County, Iowa. Previously recorded in N/A in the Office of the County Recorder

Monument Description and Remarks: (No Corner Certificates found at the County Recorders Office)

SE CORNER NE1/4 NE1/4 - SET 1/2" IRON ROD W/YELLOW LS CAP #12642 - SET ON LINE AND MIDWAY BETWEEN THE NE CORNER AND THE E1/4 CORNER

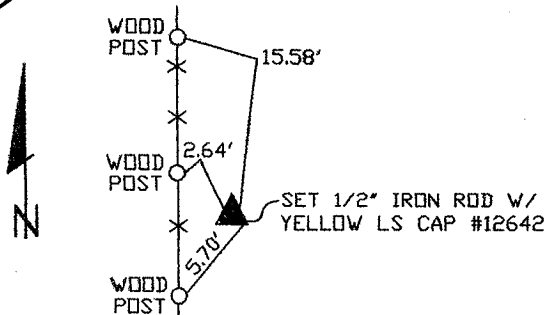
SW CORNER NE1/4 NE1/4 - SET 1/2" IRON ROD W/YELLOW LS CAP #12642 BURIED 18" DEEP - RUN STRAIGHT LINES FROM OPPOSITE 1/4 1/4 CORNERS AND SET AT POINT OF INTERSECTION

PLAN VIEW

SE CORNER NE1/4 NE1/4

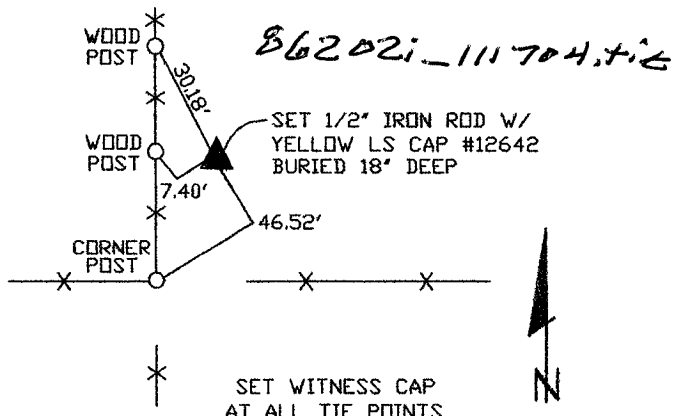
SW CORNER NE1/4 NE1/4

1440



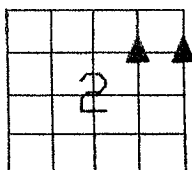
SET WITNESS CAP AT ALL TIE POINTS

B6202j-111704.tif



SET WITNESS CAP AT ALL TIE POINTS

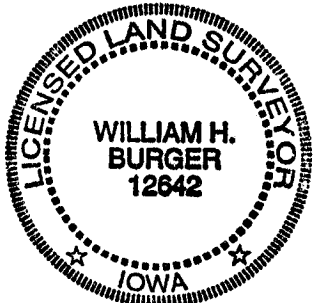
1441



SEC. 2 TWP. 86N RANGE 2W

CORNERS TO BE INDEXED

SE CORNER NE1/4 NE1/4	2	86N	2W
SW CORNER NE1/4 NE1/4	2	86N	2W



I hereby certify that this land surveying document was prepared and related survey work was performed by me or under my direct personal supervision and that I am a duly licensed Land Surveyor under the laws of the State of Iowa.

William H. Burger 11/12/09
William H. Burger Date

License number 12642

My license renewal date is December 31, 2004

Pages or Sheets covered by this seal: Sheet 1 of 1