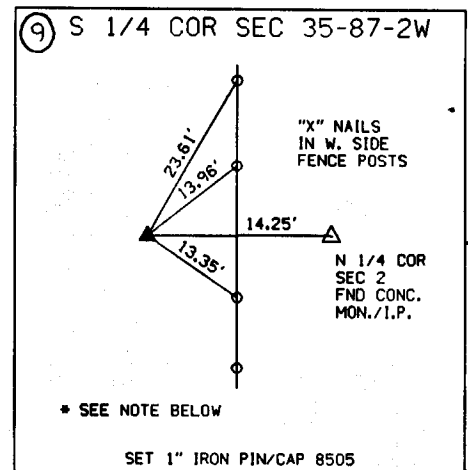
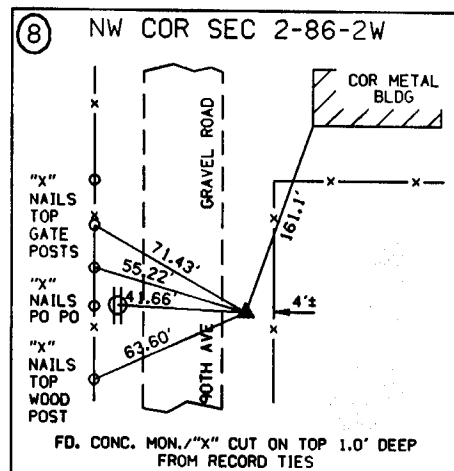
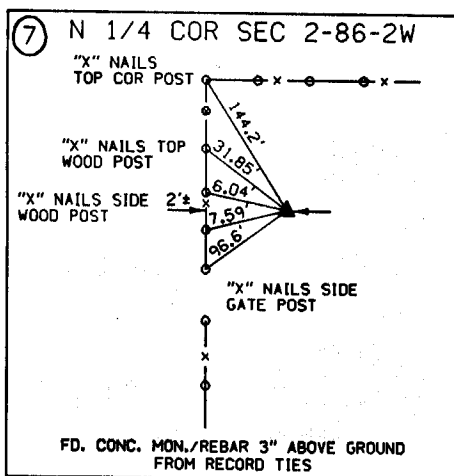
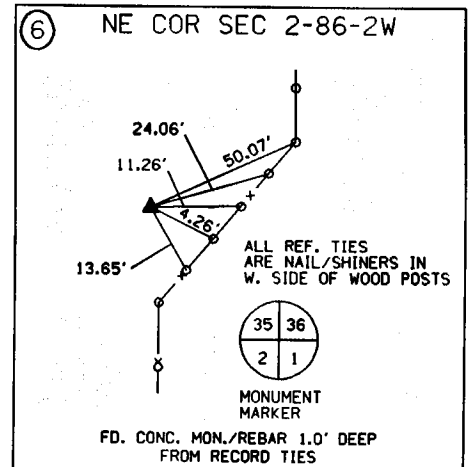
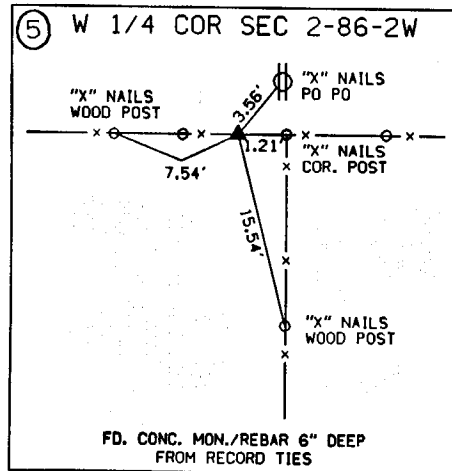
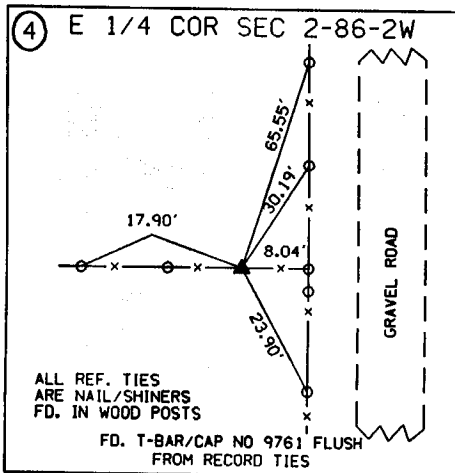
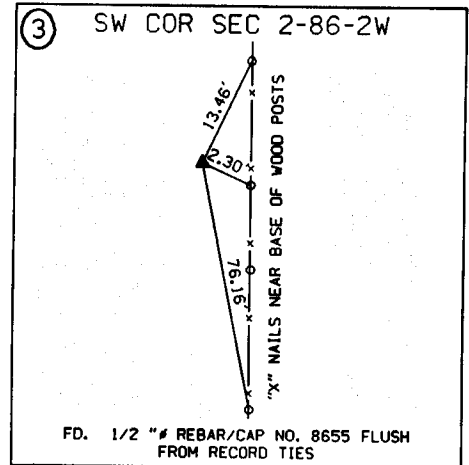
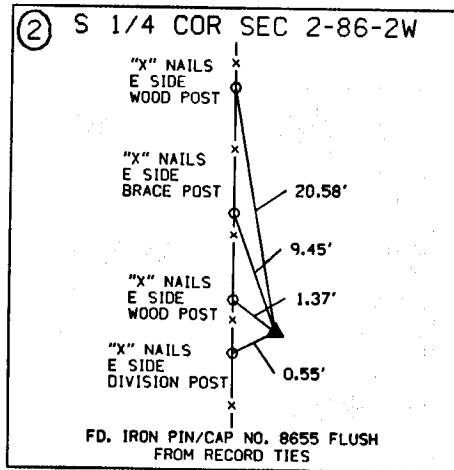
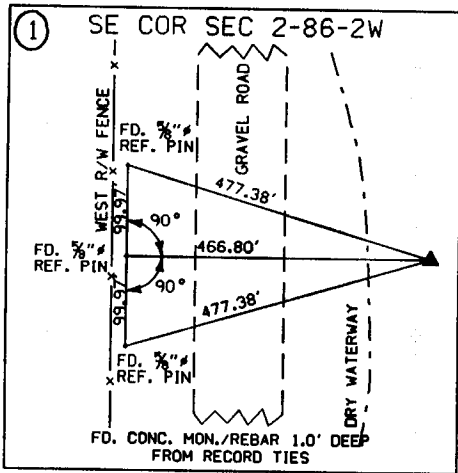


7-24-98

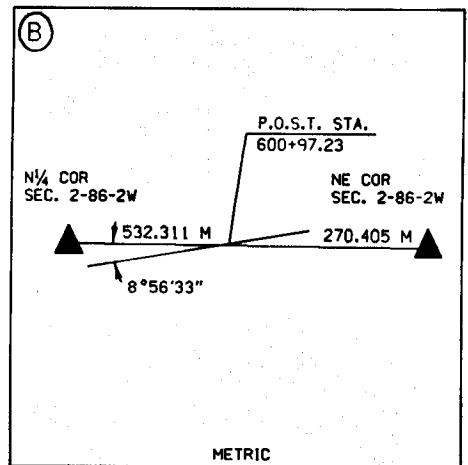
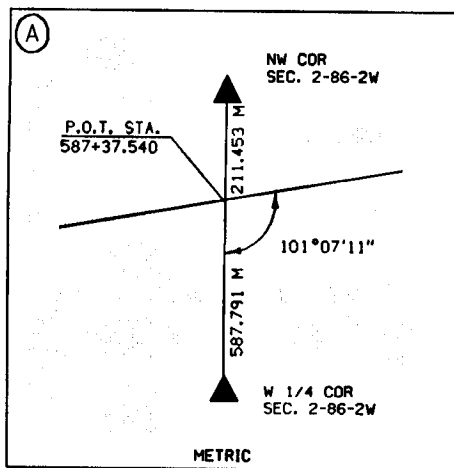
UNITED STATES PUBLIC SECTION CORNER CERTIFICATION
AND LAND CORNER SURVEY
SECTION 2 T-86N R-2W

MADE FOR
IOWA DEPARTMENT OF TRANSPORTATION FOR THE PURPOSE OF
RIGHT OF WAY DESCRIPTIONS ON PRIMARY ROAD No. U.S. 151



NOTES :

SET THE S 1/4 COR. OF SEC. 35-87-2W 14.25 FEET WEST OF THE N 1/4 CORNER OF SEC. 2-86-2W. POSITION OF CORNER WAS DETERMINED FROM CHAINING NOTES. USING PROPORTION DISTANCE BETWEEN SW COR. SEC. 35-87-2W AND A POINT 6.60 FEET EAST OF NE COR. OF SEC. 2-86-2W



REVISED 7-24-98

ALL TIES ARE ENGLISH UNLESS OTHERWISE NOTED

SHEET 2 OF 2

98 99 0536

FILED
RECORDERS OFFICE
JONES COUNTY IOWA

98 AUG 12 AM 10: 14

LINDA J. BENDIXEN
RECORDER 16.00 pd

Rust Environment and Infrastructure - 501 Sycamore Street - Waterloo, Iowa - 1-319-232-6531

AFFIDAVIT FOR CORRECTION TO SECTION CORNER CERTIFICATE

DATE: JULY 29, 1998

AFFIDAVIT FOR CORRECTIONS MADE TO SECTION CORNER CERTIFICATION FILE IN THE JONES COUNTY RECORDER'S OFFICE.

THE TIES OF THE SOUTH QUARTER CORNER OF SECTION 35 TOWNSHIP 87 NORTH RANGE 2 WEST OF THE 5TH P.M. WAS CHANGED.

MICHAEL R. FAGLE
L.S. NO. 8505

RECEIVED

AUG 14 1998

JONES COUNTY ENGINEER