

Marie Krutzfield, Recorder
Jones County, Iowa

PREPARED BY

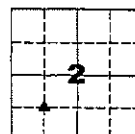
CLARENCE J. WALTON, JONES COUNTY ENGINEER'S OFFICE, 19501 HWY. 64, ANAMOSA, IOWA, 52205 (319) 462-3785

**UNITED STATES PUBLIC LAND
SURVEY CORNER CERTIFICATE**
**LAND SURVEY MONUMENTS SITUATED IN SECTION 2, TOWNSHIP 86 NORTH,
RANGE 2 WEST OF THE 5TH PRINCIPAL MERIDIAN, JONES COUNTY, IOWA.**

OFFICE FILE NO.

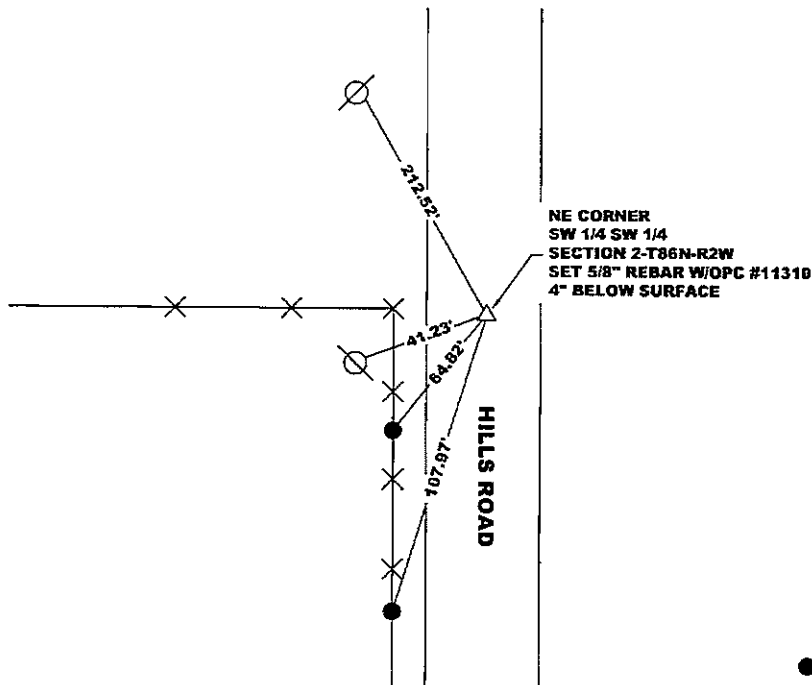
STATE PLANE COORDINATE
NAD 83 IOWA NORTH
N 3576489.21
E 5584802.54

CORNER SECTION TOWNSHIP RANGE
NE CORNER 2 86N 2W
SW 1/4 SW 1/4



NO SCALE

NOTE:
THE STATE PLANE COORDINATE AS INDICATED IS FOR CONVENIENCE ONLY.
THE TIES AS SHOWN SHOULD BE USED TO REPLACE THE CORNER, IF
DESTROYED

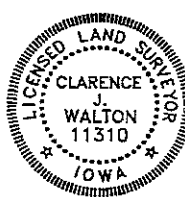


LEGEND

- SET ORANGE SURVEY DISC IN WOODEN FENCE POST
- ▲ FOUND SECTION CORNER
- △ SET SECTION CORNER 5/8" REBAR W/OPC #11310
- SET ORANGE SURVEY DISC IN UTILITY POLE
- X— FENCE LINE
- OPC ORANGE PLASTIC CAP
- () RECORDED AS

PREVIOUSLY RECORDED IN BOOK N/A, PAGE N/A

MONUMENT DESCRIPTION AND HOW ESTABLISHED SET 5/8" REBAR W/ORANGE PLASTIC CAP #11310 4" BELOW SURFACE BY SUBDIVIDING SECTION IN ACCORDANCE WITH INSTRUCTIONS FOR THE SUBDIVISION OF A SECTION IN THE PUBLIC LAND SURVEY SYSTEM AS ADMINISTERED BY THE BUREAU OF LAND MANAGEMENT.



I hereby certify that this land surveying document and the related survey work was performed by me or under my direct personal supervision and that I am a duly registered Land Surveyor under the laws of the State of Iowa.

Signed: *Clarence J. Walton* 1/21/08
Clarence J. Walton, L.S.
My Registration Renewal Date is December 31, 2009
Iowa License Number 11310
Pages or sheets covered by this seal: 1 of 1.

- A. THERE IS NO CERTIFICATE FOR THE CORNER ON FILE WITH THE RECORDER OF THE COUNTY IN WHICH THE CORNER IS LOCATED.
- B. THE CORNER MONUMENT HAS BEEN REPLACED OR MODIFIED.
- C. THE SURVEYOR IN RESPONSIBLE CHARGE OF THE LAND SURVEYING ACCEPTS A CORNER POSITION THAT DIFFERS FROM THAT SHOWN IN THE PUBLIC RECORDS OF THE COUNTY IN WHICH THE CORNER IS LOCATED.
- D. THE REFERENCE TIES REFERRED TO IN AN EXISTING PUBLIC RECORD NO LONGER EXIST.

CORNERS TO BE INDEXED

CORNER	SECTION	TOWNSHIP	RANGE
NE CORNER SW 1/4 SW 1/4	2	86N	2W
SE CORNER NE 1/4 SW 1/4	2	86N	2W
NW CORNER SE 1/4 SW 1/4	2	86N	2W
SE CORNER NW 1/4 SW 1/4	2	86N	2W

JONES COUNTY ENGINEER'S OFFICE



19501 HWY. 64, ANAMOSA, IOWA 52205
(319) 462-3785