

COPY

Jones County Marie Krutzfield Recorder  
 Fee Book 2012 0581  
 03/07/2012 @0107PM # Pages 1  
 ZSC SEC COR CERT  
 Total Fees: \$7.00

PREPARED BY: MICHAEL J. WEBER, WEBER SURVEYING, LLC, 26789 46TH AVE, BERNARD, IA 52032 (563) 879-4173

UNITED STATES PUBLIC LAND SURVEY CORNER CERTIFICATE  
 OF

LAND SURVEY MONUMENTS SITUATED IN SECTION 24, TOWNSHIP 86 NORTH, RANGE 2 WEST  
 OF THE FIFTH PRINCIPAL MERIDIAN, JONES COUNTY, IOWA.  
 PREVIOUSLY RECORDED NONE UNLESS OTHERWISE NOTED  
(book, page, document number, etc.)

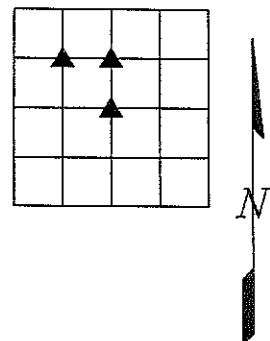
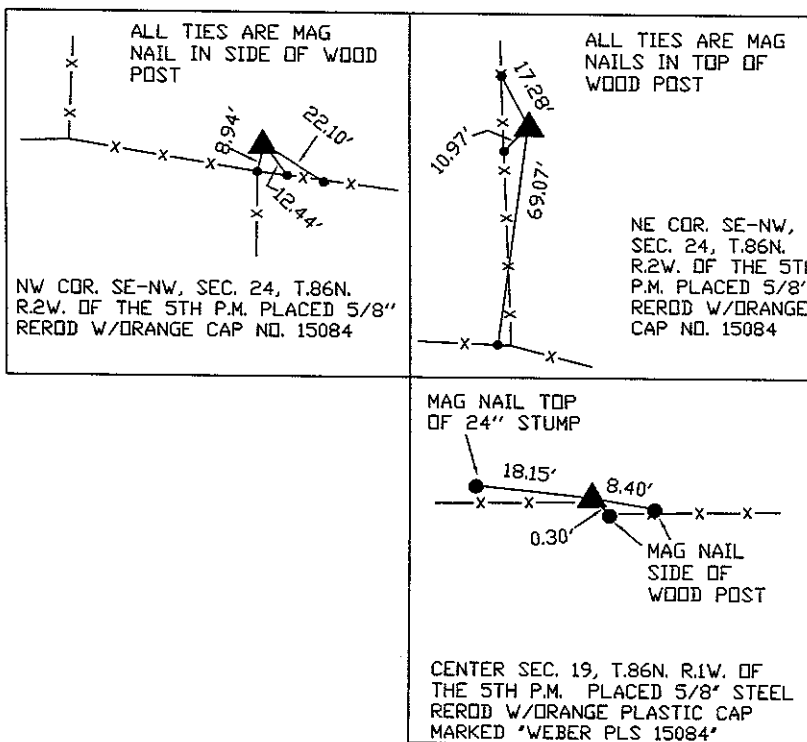
(Show reason for preparing this certificate, the evidence and detailed procedures used in establishing the corner positions and monumentation found or placed.)

Monument Description and Remarks:

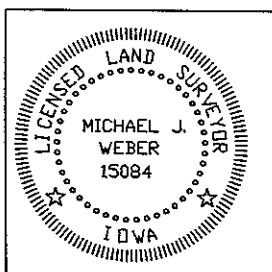
- NW COR. SE-NW, SEC. 24, T.86N. R.2W. OF THE 5TH P.M. PLACED 5/8" REROD W/ORANGE CAP NO. 15084, ESTABLISHED CORNER USING SURVEY INFORMATION OBTAINED FROM THE COUNTY ENGINEERS OFFICE FOR THE RICHLAND ROAD GRADING PROJECT AND BREAKDOWN OF THE NW 1/4 OF SECTION 24.
- NE COR. SE-NW, SEC. 24, T.86N. R.2W. OF THE 5TH P.M. PLACED 5/8" REROD W/ORANGE CAP NO. 15084, ESTABLISHED CORNER MIDWAY AND ONLINE BETWEEN THE CENTER AND N 1/4 CORNER OF SECTION 24 AND USING SURVEY INFORMATION OBTAINED FROM THE COUNTY ENGINEERS OFFICE FOR THE RICHLAND ROAD GRADING PROJECT.
- CENTER, SEC. 24, T.86N. R.2W. OF THE 5TH P.M. PLACED 5/8" REROD W/ORANGE CAP NO. 15084, ESTABLISHED CORNER USING EXISTING OCCUPATION FENCELINE AND USING SURVEY INFORMATION OBTAINED FROM THE COUNTY ENGINEERS OFFICE FOR THE RICHLAND ROAD GRADING PROJECT.

(Show a minimum of three reference ties to durable physical objects, relevant monuments and physical conditions that will enable recovery of the corner.)

PLAN - VIEW



DWG. NO. 2012\TALBERT\PARCEL 2012-64



I HEREBY CERTIFY THAT THIS LAND SURVEYING DOCUMENT WAS PREPARED AND THE RELATED SURVEY WORK WAS PERFORMED BY ME OR UNDER MY DIRECT PERSONAL SUPERVISION AND THAT I AM A DULY LICENSED LAND SURVEYOR, UNDER THE LAWS OF THE STATE OF IOWA.

*Michael Weber* March 5, 2012  
 MICHAEL J. WEBER (DATE)  
 LICENSE NUMBER 15084  
 MY LICENSE RENEWAL DATE IS DECEMBER 31, 2013  
 SHEETS COVERED BY THIS SEAL: *This Sheet 1*

List Corners to be Indexed		
Corner	Sec	Twp Range
NW Cor. SE-NW	24	86N 2W
NE Cor. SE-NW	24	86N 2W
CENTER	24	86N 2W