

Jones County Iowa  
 Marie Krutzfield, Recorder  
**Fee Book 2010 2565**

09/23/2010 @1242PM  
 25C SEC COR CERT  
 Book: Page: # Pages: 1  
 Total Fees: \$9.00

MOHN SURVEYING INC. ROGER R. MOHN 1890 GREAT RIVER ROAD LANSING, IOWA 52151 (563) 538-4067

TIES. DWG IaDNR Jones Co.

SLSI 9-90

**UNITED STATES PUBLIC LAND SURVEY CORNER CERTIFICATE**

OF

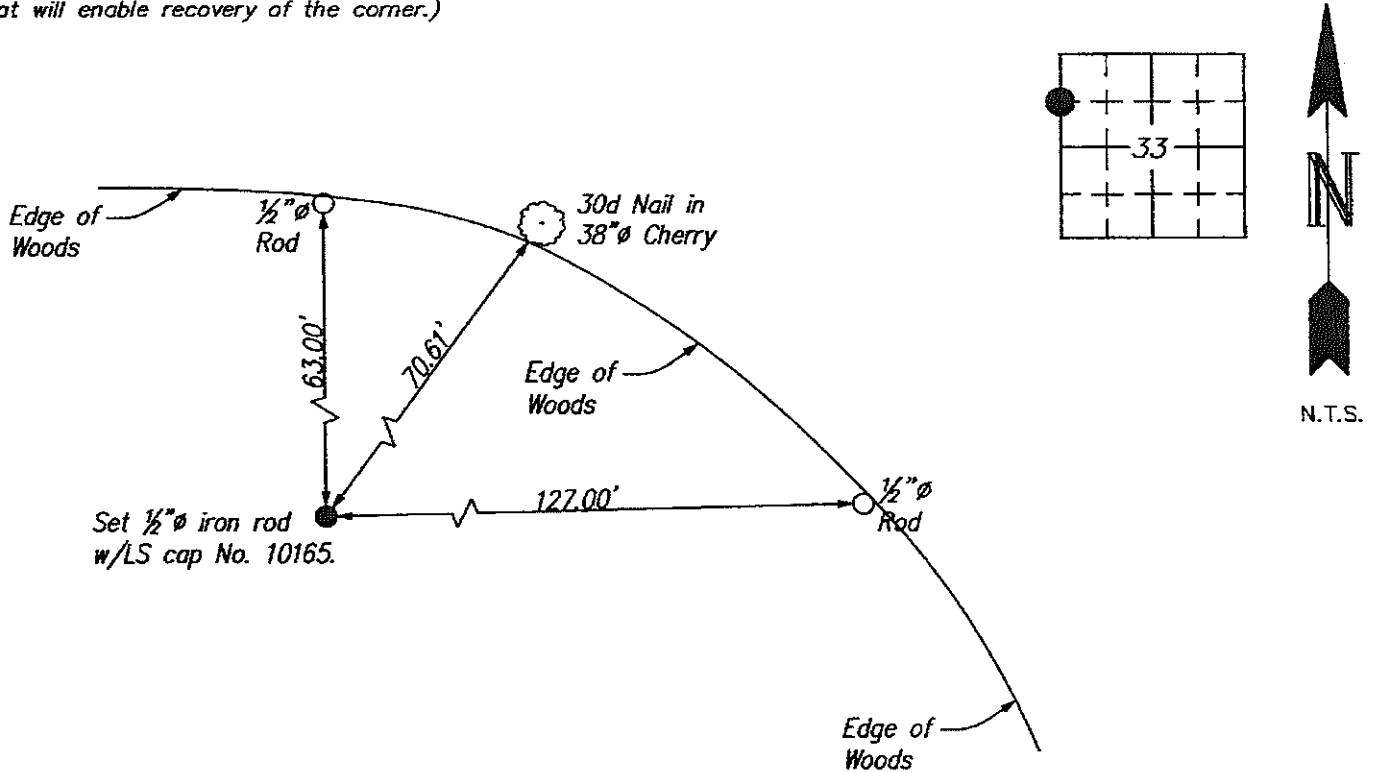
Land Survey Monuments situated in Section 33, Township 86 North, Range 2 West, of the Fifth Principal Meridian, Jones County, Iowa.  
 Previously recorded in no record on file in County Recorder's Office.  
 (book, page, document number, etc.)

(Show reason for preparing this certificate, the evidence and detailed procedures used in establishing the corner positions and monumentation found or placed.)

Monument Description and Remarks: Established corner at the quarter point of the west line of Section 33. Could not any monuments along the west line of Section 33. Corner position falls in cult. field. No existing monuments could be found. Set 1/2" iron rod w/LS cap no. 10165.

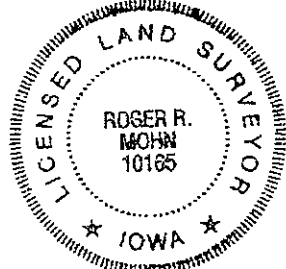
**PLAN - VIEW**

(Show a minimum of three reference ties to durable physical objects, relevant monuments and physical conditions that will enable recovery of the corner.)



I hereby certify that this land surveying document was prepared by me or under my direct personal supervision and that I am a duly Registered Land Surveyor under the laws of the state of Iowa.

*Roger R. Mohn* 9/22, 2010  
 ROGER R. MOHN, P.E. & L.S. Iowa Registration No. 10165  
 My registration expires December 31, 2010



SEAL

List Corners to be Indexed			
Corners	Section	Twp	Range
SW Cor. of NW 1/4 - NW 1/4	33	86N	2W