

Jones County, Iowa
 Marie Krutzfield, Recorder
Fee Book 2010 2563
 09/23/2010 @1240PM
 ZSC SEC COR CERT
 Book: Page: # Pages: 1
 Total Fees: \$9.00

MOHN SURVEYING INC. ROGER R. MOHN 1890 GREAT RIVER ROAD LANSING, IOWA 52151 (563) 538-4067

TIES. DWG IaDNR Jones Co.

SLSI 9-90

UNITED STATES PUBLIC LAND SURVEY CORNER CERTIFICATE

OF

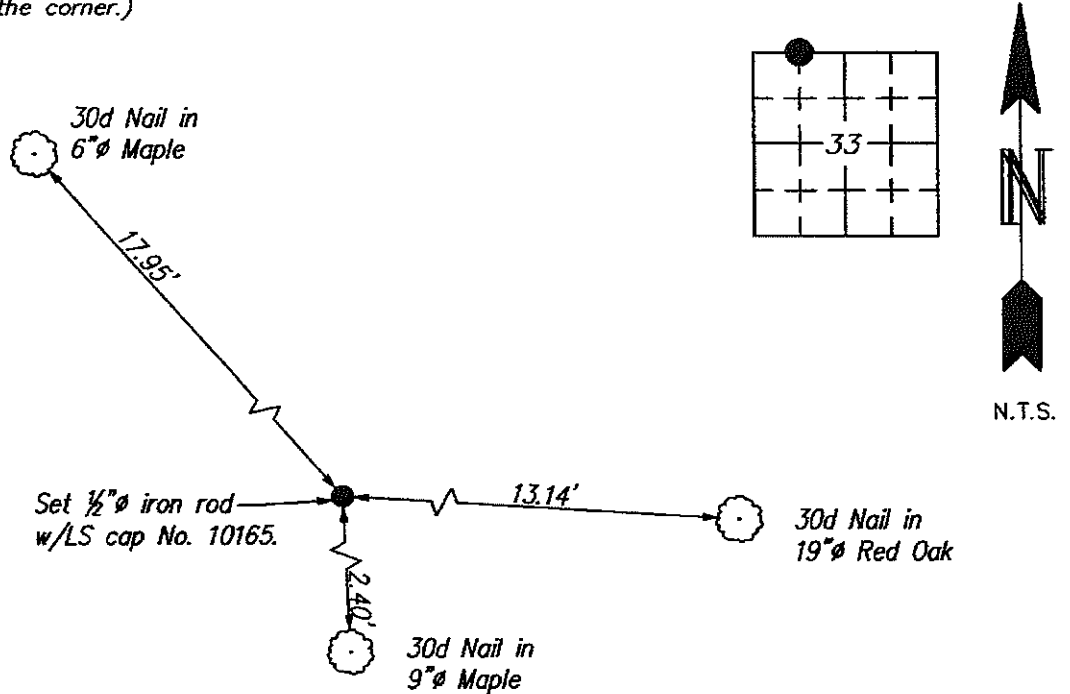
Land Survey Monuments situated in Section 33, Township 86 North, Range 2 West, of the Fifth Principal Meridian, Jones County, Iowa.
 Previously recorded in no record on file in County Recorder's Office.
 (book, page, document number, etc.)

(Show reason for preparing this certificate, the evidence and detailed procedures used in establishing the corner positions and monumentation found or placed.)

Monument Description and Remarks: Established corner at the midpoint of the north line of the NW $\frac{1}{4}$. Searched 20' radius area with magnetic locator and probe but found nothing.
Set $\frac{1}{2}$ " ϕ iron rod w/LS cap no. 10165 at the computed position.

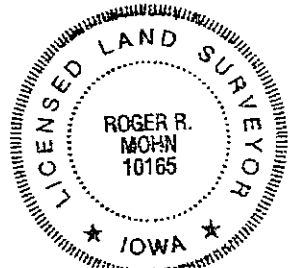
PLAN - VIEW

(Show a minimum of three reference ties to durable physical objects, relevant monuments and physical conditions that will enable recovery of the corner.)



I hereby certify that this land surveying document was prepared by me or under my direct personal supervision and that I am a duly Registered Land Surveyor under the laws of the state of Iowa.

Roger R. Mohn 9/22, 2010
 ROGER R. MOHN, P.E. & L.S. Iowa Registration No. 10165
 My registration expires December 31, 2010



SEAL

List Corners to be Indexed			
Corners	Section	Twp	Range
NE Cor. of NW $\frac{1}{4}$ -NW $\frac{1}{4}$	33	86N	2W