

Jones County Iowa  
Marie Krutzfield, Recorder  
Fee Book 2010 2564

09/23/2010 @12:41PM  
ZSC SEC COR CERT  
Book: Page: # Pages: 1  
Total Fees: \$9.00

MOHN SURVEYING INC. ROGER R. MOHN 1890 GREAT RIVER ROAD LANSING, IOWA 52151 (563) 538-4067

TIES. DWG IaDNR Jones Co.

SLSI 9-90

### UNITED STATES PUBLIC LAND SURVEY CORNER CERTIFICATE

OF

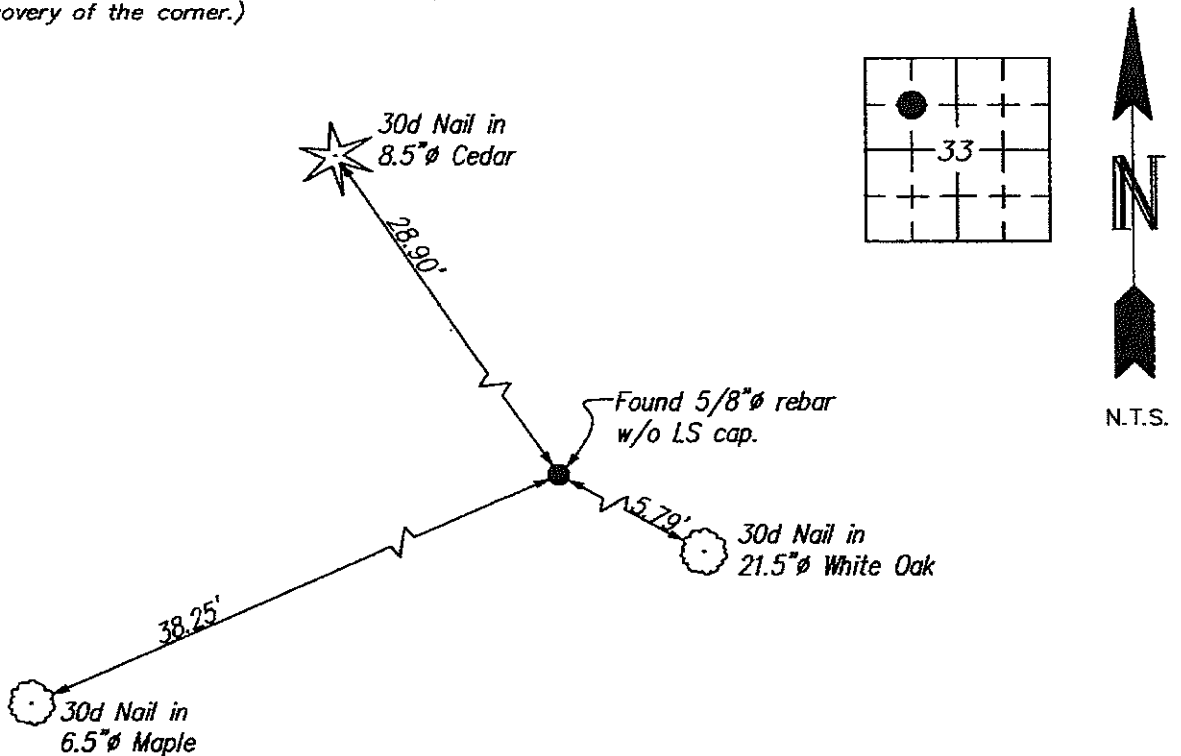
Land Survey Monuments situated in Section 33, Township 86 North, Range 2 West, of the Fifth Principal Meridian, Jones County, Iowa.  
Previously recorded in no record on file in County Recorder's Office.  
(book, page, document number, etc.)

(Show reason for preparing this certificate, the evidence and detailed procedures used in establishing the corner positions and monumentation found or placed.)

Monument Description and Remarks: Found 5/8"Ø rebar w/o LS cap as per a plat of survey prepared by James D. Franklin on June 15, 1964 and recorded as Document No. 2969 of Jones County Records.

### PLAN - VIEW

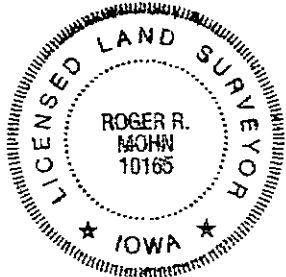
(Show a minimum of three reference ties to durable physical objects, relevant monuments and physical conditions that will enable recovery of the corner.)



I hereby certify that this land surveying document was prepared by me or under my direct personal supervision and that I am a duly Registered Land Surveyor under the laws of the state of Iowa.

Roger R. Mohn 9/22, 2010  
ROGER R. MOHN, P.E. & L.S. Iowa Registration No. 10165  
My registration expires December 31, 2010

SEAL



Corners	Section	Twp	Range
SE Cor. of NW¼-NW¼	33	86N	2W