

COPY

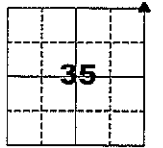
Jones County Marie Krutzfield Recorder  
Fee Book 2012 1426  
05/17/2012 @0329PM # Pages 2  
ZSC SEC COR CERT  
Total Fees: \$0.00

PREPARED BY  
CLARENCE J. WALTON, JONES COUNTY ENGINEER'S OFFICE, 19501 HWY. 64, ANAMOSA, IOWA, 52205 (319) 462-3785

# UNITED STATES PUBLIC LAND SURVEY CORNER CERTIFICATE

LAND SURVEY MONUMENTS SITUATED IN SECTION 35, TOWNSHIP 86 NORTH,  
RANGE 2 WEST OF THE 5TH PRINCIPAL MERIDIAN, JONES COUNTY, IOWA.

## SURVEYOR'S NARRATIVE



NO SCALE

SET 5/8" X 24" REBAR WITH ORANGE PLASTIC CAP #11310. LEFT REBAR STICKING OUT OF GROUND 3" TO ACT AS TOE STUBBER. SET STEEL FENCE POST WITH "SURVEY MARKER" SIGN AS A WITNESS TO CORNER. REBAR WAS SET BESIDE STUB OF OLD ROTTED FENCE CORNER POST. TOP OF CORNER POST WAS LYING NEARBY. THE POST HAD WIRE RUNNING TO EAST AND WEST AS WELL AS COMING FROM THE NORTH LEAVING NO DOUBT THAT IT WAS A CORNER POST.

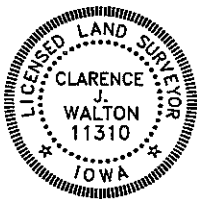
THERE ALSO WAS A LIMESTONE LYING ON THE GROUND SURFACE NEXT TO THE CORNER POST STUB. I PAID NO CREDENCE TO IT AS THE STONE WAS SIMILAR TO SEVERAL OTHERS IN THE NEAR VICINITY. FURTHERMORE THE STONE SHOWED NO EVIDENCE OF HAVING BEEN BURIED IN THE PAST SUCH AS A CHALKY SURFACE DUE TO ACIDS IN THE SOIL DECOMPOSING THE STONE.

THERE WAS A VERY OLD FENCE LINE RUNNING NORTH WITH OLD SPLIT POSTS MIXED WITH OLD STEEL FENCE POSTS. THERE IS SOME FRAGMENTARY EVIDENCE THAT A FENCE LINE MAY HAVE RUN SOUTH HOWEVER, WITH THE BULLDOZING THAT HAS BEEN DONE IN THAT AREA, I WOULD NOT BE VERY DOGMATIC ABOUT IT.

A RELATIVELY NEW EAST-WEST FENCE EXISTS THAT MORE-OR-LESS IS SUPERIMPOSED OVER SIGNS OF AN OLD FENCE. A LINE OF A HANDFULL OF LARGISH OAK TREES INDICATES THE EAST WEST FENCE HAS BEEN PRETTY MUCH IN THE SAME PLACE FOR QUITE SOME TIME.

THEREFORE I FEEL THAT THE PHYSICAL EVIDENCE JUSTIFIES THE PLACEMENT OF THE REBAR WHERE IT IS.

Page 1 of 2



I hereby certify that this land surveying document and the related survey work was performed by me or under my direct personal supervision and that I am a duly registered Land Surveyor under the laws of the State of Iowa.

Signed: *Clarence J. Walton* 5/17/12  
Clarence J. Walton, L.S.  
My Registration Renewal Date is December 31, 2013  
Iowa License Number 11310  
Pages or sheets covered by this seal: 1 of 2.

- A. THERE IS NO CERTIFICATE FOR THE CORNER ON FILE WITH THE RECORDER OF THE COUNTY IN WHICH THE CORNER IS LOCATED.
- B. THE CORNER MONUMENT HAS BEEN REPLACED OR MODIFIED.
- C. THE SURVEYOR IN RESPONSIBLE CHARGE OF THE LAND SURVEYING ACCEPTS A CORNER POSITION THAT DIFFERS FROM THAT SHOWN IN THE PUBLIC RECORDS OF THE COUNTY IN WHICH THE CORNER IS LOCATED.
- D. THE REFERENCE TIES REFERRED TO IN AN EXISTING PUBLIC RECORD NO LONGER EXIST.
- E. EXISTING CORNER TIES UPDATED.

### CORNERS TO BE INDEXED

CORNER	SECTION	TOWNSHIP	RANGE
E 1/4 CORNER	26	86N	2W
W 1/4 CORNER	25	86N	2W

### JONES COUNTY ENGINEER'S OFFICE



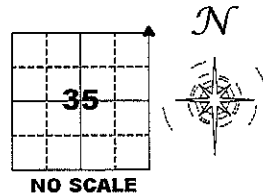
19501 HWY. 64, ANAMOSA, IOWA 52205  
(319) 462-3785

# UNITED STATES PUBLIC LAND SURVEY CORNER CERTIFICATE

LAND SURVEY MONUMENTS SITUATED IN SECTION 35, TOWNSHIP 86 NORTH, RANGE 2 WEST OF THE 5TH PRINCIPAL MERIDIAN, JONES COUNTY, IOWA.

STATE PLANE COORDINATE  
NAD 83 IOWA NORTH  
N: 3554141.90  
E: 5589176.08

CORNER SECTION TOWNSHIP RANGE  
NE CORNER 35 T86N R2W

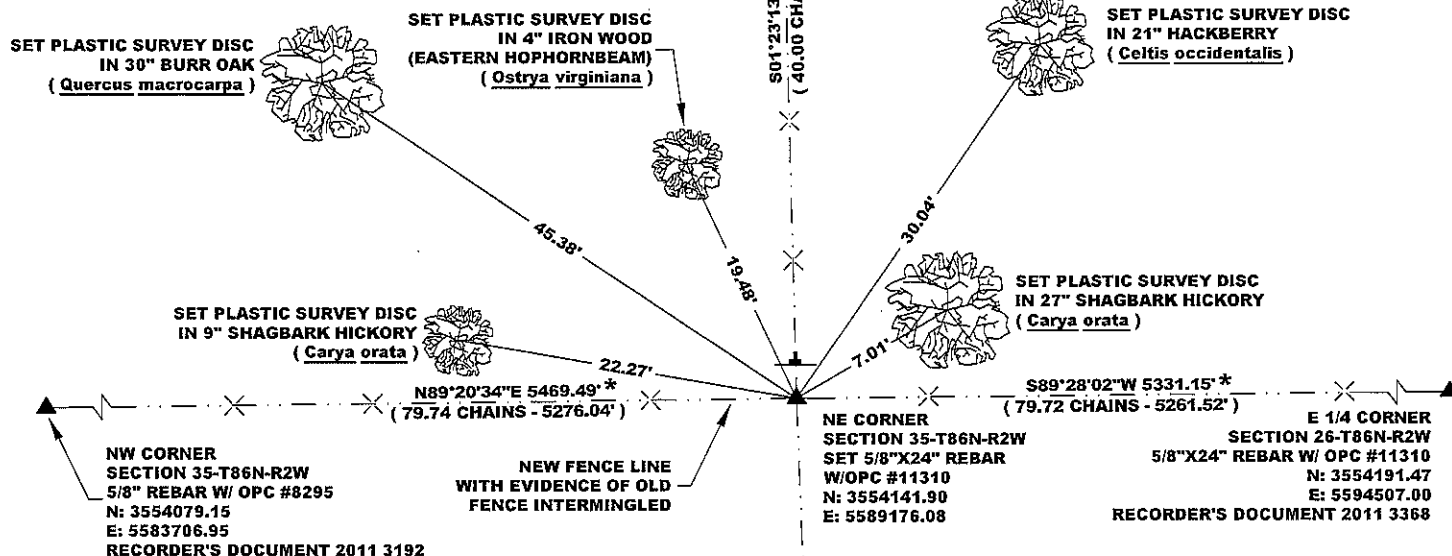


**NOTES:**

- 1) THE STATE PLANE COORDINATES AS SHOWN ARE FOR CONVENIENCE ONLY. THE TIES AS SHOWN SHOULD BE USED TO REPLACE THE CORNER, IF DESTROYED.
- 2) COORDINATES AS SHOWN ARE GRID COORDINATES AND BASED ON JONES COUNTY G.P.S. CONTROL NETWORK WHICH IN TURN IS BASED ON NAD 83 IOWA NORTH DATUM.
- 3) ALL MEASUREMENTS ARE IN FEET AND DECIMALS THEREOF.
- 4) \* GRID DISTANCE, BASED ON JONES COUNTY G.P.S. CONTROL NETWORK.

E 1/4 CORNER  
SECTION 26-T86N-R2W  
FOUND STONE  
N: 3556845.96  
E: 5589110.61  
RECORDER'S DOCUMENT 2011 3369

VERY OLD  
DELAPIDATED  
FENCE LINE



**"SURVEY MARKER" SIGN**



**SURVEY DISC**



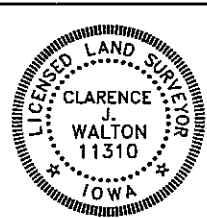
**LEGEND**

- OPC ORANGE PLASTIC CAP
- ( ) RECORDED AS
- SET STEEL FENCE POST W/ "SURVEY MARKER" SIGN

PREVIOUSLY RECORDED IN N/A

MONUMENT DESCRIPTION AND HOW ESTABLISHED SET 5/8" X 24" REBAR WITH ORANGE PLASTIC CAP #11310. LEFT REBAR STICKING 3" ABOVE PRESENT GROUND SURFACE. PLEASE SEE PAGE 1 OF 2 FOR A MORE DETAILED NARRATIVE.

FIELD BOOK 341, PAGE 74. DATE OF SURVEY: 12/1/11



I hereby certify that this land surveying document and the related survey work was performed by me or under my direct personal supervision and that I am a duly registered Land Surveyor under the laws of the State of Iowa.  
Signed: *Clarence J. Walton* 5/17/12  
Clarence J. Walton, L.S.  
My Registration Renewal Date is December 31, 2013  
Iowa License Number 11310  
Pages or sheets covered by this seal: 2 of 2.

- A. THERE IS NO CERTIFICATE FOR THE CORNER ON FILE WITH THE RECORDER OF THE COUNTY IN WHICH THE CORNER IS LOCATED.
- B. THE CORNER MONUMENT HAS BEEN REPLACED OR MODIFIED.
- C. THE SURVEYOR IN RESPONSIBLE CHARGE OF THE LAND SURVEYING ACCEPTS A CORNER POSITION THAT DIFFERS FROM THAT SHOWN IN THE PUBLIC RECORDS OF THE COUNTY IN WHICH THE CORNER IS LOCATED.
- D. THE REFERENCE TIES REFERRED TO IN AN EXISTING PUBLIC RECORD NO LONGER EXIST.
- E. EXISTING CORNER TIES UPDATED.

**CORNERS TO BE INDEXED**

CORNER	SECTION	TOWNSHIP	RANGE
NE	35	86N	2W
SE	26	86N	2W
SW	25	86N	2W
NW	36	86N	2W

**JONES COUNTY ENGINEER'S OFFICE**



19501 HWY. 64, ANAMOSA, IOWA 52205  
(319) 462-3785