

Prepared by Wm. Burger Land Surveyor 510 3rd Street West Court, Worthington, Iowa Phone 563 - 855 2028

**UNITED STATES PUBLIC LAND SURVEY CORNER CERTIFICATE**

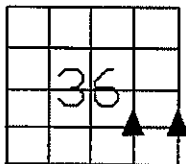
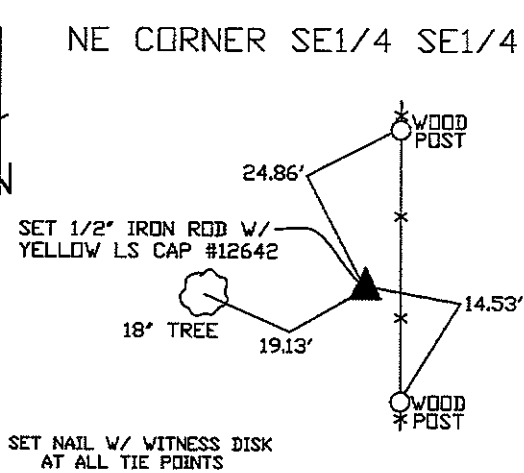
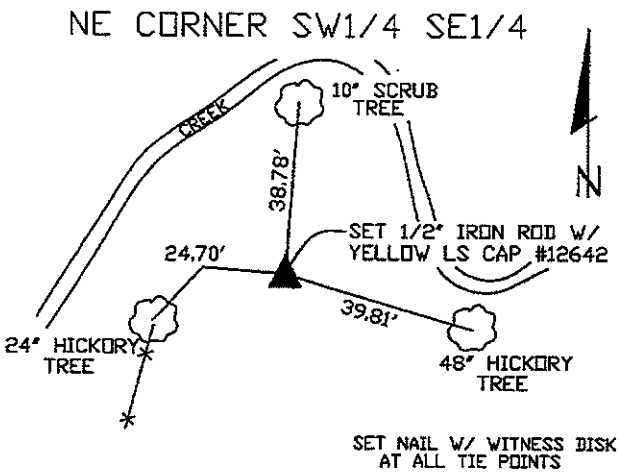
Land Survey Monuments situated in Section 36, Township 86N, Range 2W, of the Fifth Principal Meridian, Jones County, Iowa. Previously recorded in N/A in the Office of the County Recorder

Monument Description and Remarks: (No Corner Certificates found at the County Recorders Office)

NE CORNER SW1/4 SE1/4 - SET 1/2" IRON ROD W/ YELLOW LS CAP #12642 - RUN STRAIGHT LINES OPPOSITE 1/4 1/4 CORNERS AND SET AT POINT OF INTERSECTION

NE CORNER SE1/4 SE1/4 - SET 1/2" IRON ROD W/ YELLOW LS CAP #12642 - CALCULATED THE THEORETICAL E1/4 CORNER BY USING STANDARD SURVEYING PRACTICE AND SETTING MIDWAY BETWEEN THE NW CORNER AND A FOUND STONE AT THE SE CORNER. THE NW CORNER WAS ESTABLISHED BY USING EXISTING FENCELINE EVIDENCE TO THE WEST AND INTERSECTED WITH EXISTING NORTH/SOUTH FENCELINE. THE NW CORNER SW1/4 SW1/4 WAS ESTABLISHED BY SETTING ON LINE AND MIDWAY BETWEEN THE THEORETICAL E1/4 CORNER AND THE SE CORNER

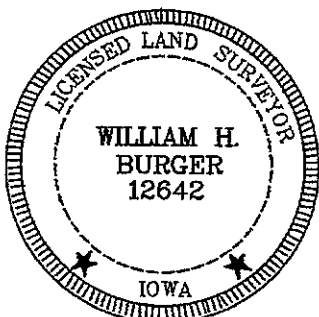
**PLAN VIEW**



SEC. 36 TWP. 86N RANGE 2W

**CORNERS TO BE INDEXED**

NE CORNER SW1/4 SE1/4	36	T86N	R2W
NE CORNER SE1/4 SE1/4	36	T86N	R2W



I hereby certify that this land surveying document was prepared and related survey work was performed by me or under my direct personal supervision and that I am a duly licensed Land Surveyor under the laws of the State of Iowa.

*William H. Burger* 2/29/12  
 William H. Burger Date

License number 12642  
 My license renewal date is December 31, 2012  
 Pages or Sheets covered by this seal: Sheet 1 of 1