

Jones County Marie Krutzfield Recorder
 Fee Book 2012 0634
 03/13/2012 @0803AM # Pages 1
 ZSC SEC COR CERT
 Total Fees: \$7.00

Prepared by Wm. Burger LandSurveyor 510 3rd Street West Court, Worthington, Iowa Phone 563 - 855 2028

UNITED STATES PUBLIC LAND SURVEY CORNER CERTIFICATE

Land Survey Monuments situated in Section 36, Township 86N, Range 2W, of the Fifth Principal Meridian, Jones County, Iowa. Previously recorded in N/A in the Office of the County Recorder

Monument Description and Remarks: (No Corner Certificates found at the County Recorders Office)

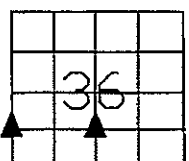
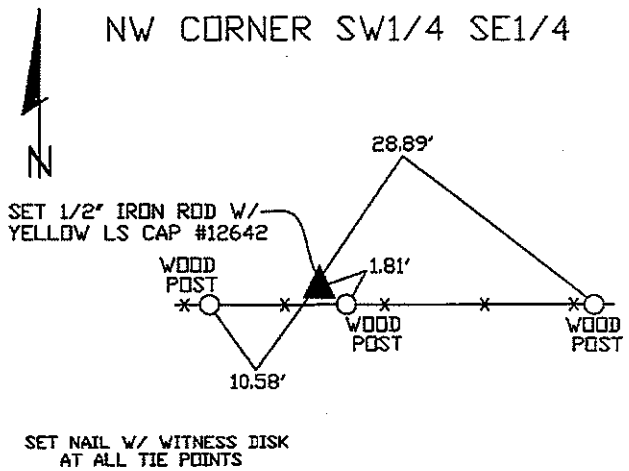
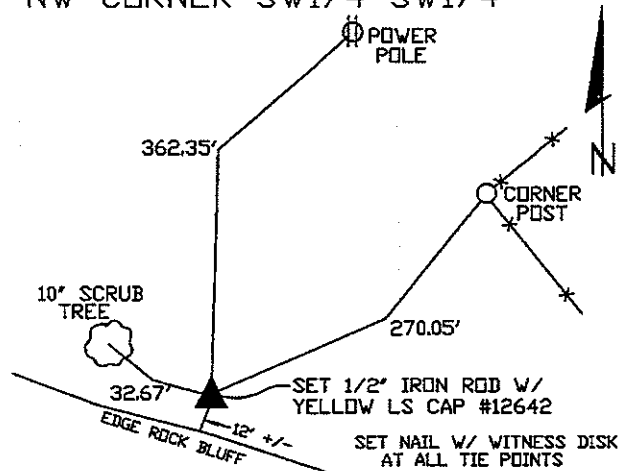
NW CORNER SW1/4 SW1/4 - SET 1/2" IRON ROD W/ YELLOW LS CAP #12642 - CALCULATED THE THEORETICAL W1/4 CORNER BY USING STANDARD SURVEYING PRACTICE AND SETTING MIDWAY BETWEEN AN EXISTING CORNER POST AT THE NW CORNER AND AN EXISTING CORNER POST AT THE SW CORNER THE NW CORNER SW1/4 SW1/4 WAS ESTABLISHED BY SETTING ON LINE AND MIDWAY BETWEEN THE THEORETICAL W1/4 CORNER AND THE SW CORNER

NW CORNER SW1/4 SE1/4 - SET 1/2" IRON ROD W/ YELLOW LS CAP #12642 - CALCULATED THE THEORETICAL CENTER OF SECTION BY USING STANDARD SURVEYING PRACTICE AND FOUND AN EXISTING CORNER POST AT THE S1/4 CORNER. THE NW CORNER SW1/4 SE1/4 WAS ESTABLISHED BY SETTING ON LINE AND MIDWAY BETWEEN THE THEORETICAL CENTER OF SECTION AND THE S1/4 CORNER

NW CORNER SW1/4 SW1/4

PLAN VIEW

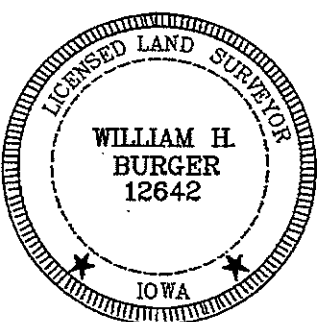
NW CORNER SW1/4 SE1/4



SEC. 36 TWP. 86N RANGE 2W

CORNERS TO BE INDEXED

NW CORNER SW1/4 SW1/4	36	T86N	R2W
NW CORNER SW1/4 SE1/4	36	T86N	R2W



I hereby certify that this land surveying document was prepared and related survey work was performed by me or under my direct personal supervision and that I am a duly licensed Land Surveyor under the laws of the State of Iowa.

William H. Burger 2/29/12
 William H. Burger Date

License number 12642
 My license renewal date is December 31, 2012
 Pages or Sheets covered by this seal Sheet 1 of 1