

COPY

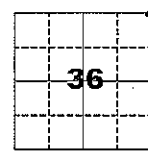
☐☐  
 Jones County Marie Krutzfield Recorder  
 Fee Book 2011 3368  
 12/30/2011 @1151AM # Pages 2  
 ZSC SEC COR CERT  
 Total Fees: \$0.00

PREPARED BY  
 CLARENCE J. WALTON, JONES COUNTY ENGINEER'S OFFICE, 19501 HWY. 64, ANAMOSA, IOWA, 52205 (319) 462-3785

# UNITED STATES PUBLIC LAND SURVEY CORNER CERTIFICATE

LAND SURVEY MONUMENTS SITUATED IN SECTION 36, TOWNSHIP 86 NORTH,  
 RANGE 2 WEST OF THE 5TH PRINCIPAL MERIDIAN, JONES COUNTY, IOWA.

## SURVEYOR'S NARRATIVE

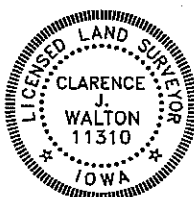


NO SCALE

We spent quite some time on this corner. All known corners along the 1W - 2W Range line from the SE corner of Township 86 North, Range 2 West (Richland Twp.) to the E 1/4 corner of Section 1-T86N-R2W were shot. Particular attention was paid to the S-ly five miles of the east line of Richland Twp. Fence lines were tied down as well as tying down the centerline of 70<sup>th</sup> Avenue, old county road records were drafted and overlaid on the survey data. The possible area in which this corner was likely to be found was thoroughly searched. We found a few artifacts that drew our attention at first but ruled them out as being unviable, mostly due being in areas of recent bulldozing or being too far off distance or line (especially for William Burt). There were a handful of burr oaks in the vicinity that size-wise could qualify as being a candidate for a bearing tree. The centers if these trees were tied into the survey and reverse bearings and distances from the government field notes were plotted on the trees to see if any fit the feasible search area. One tree seemed to bear an old scar that was partially covered over by either a gall of sorts or strange looking scar. This tree also fit the search area extremely closely. No sign of any monument was found as bulldozing activity had pushed dirt, trees, and rubble over half of the search area. In the area that the oak tree of interest pointed to for the corner's location, there was about 9 feet of fill. Nonetheless, we probed with no results.

With the coincidence of the that could pass muster as a bearing tree with the alignment we had determined, the proximity to an angle point in the old abandoned road, and distance to the SE corner of said Section 36, and agreement with Pat Powell who is very hard to sell anything to, I determined to set the corner at the bearing and distance from the burr oak I suspected as being a bearing tree.

Page 1 of 2



I hereby certify that this land surveying document and the related survey work was performed by me or under my direct personal supervision and that I am a duly registered Land Surveyor under the laws of the State of Iowa.

Signed: *Clarence J. Walton* 12/30/11  
 Clarence J. Walton, L.S.  
 My Registration Renewal Date is December 31, 2011  
 Iowa License Number 11310  
 Pages or sheets covered by this seal: 1 of 2.

- A. THERE IS NO CERTIFICATE FOR THE CORNER ON FILE WITH THE RECORDER OF THE COUNTY IN WHICH THE CORNER IS LOCATED.
- B. THE CORNER MONUMENT HAS BEEN REPLACED OR MODIFIED.
- C. THE SURVEYOR IN RESPONSIBLE CHARGE OF THE LAND SURVEYING ACCEPTS A CORNER POSITION THAT DIFFERS FROM THAT SHOWN IN THE PUBLIC RECORDS OF THE COUNTY IN WHICH THE CORNER IS LOCATED.
- D. THE REFERENCE TIES REFERRED TO IN AN EXISTING PUBLIC RECORD NO LONGER EXIST.
- E. EXISTING CORNER TIES UPDATED.

### CORNERS TO BE INDEXED

CORNER	SECTION	TOWNSHIP	RANGE
NE CORNER	36	86N	2W
SE CORNER	25	86N	2W
SW CORNER	30	86N	2W
NW CORNER	31	86N	2W

### JONES COUNTY ENGINEER'S OFFICE



19501 HWY. 64, ANAMOSA, IOWA 52205  
 (319) 462-3785

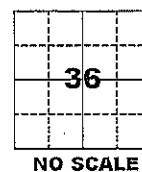
# UNITED STATES PUBLIC LAND SURVEY CORNER CERTIFICATE

LAND SURVEY MONUMENTS SITUATED IN SECTION 36, TOWNSHIP 86 NORTH,  
RANGE 2 WEST OF THE 5TH PRINCIPAL MERIDIAN, JONES COUNTY, IOWA.

STATE PLANE COORDINATE  
NAD 83 IOWA NORTH  
N: 3554191.47  
E: 5594507.00

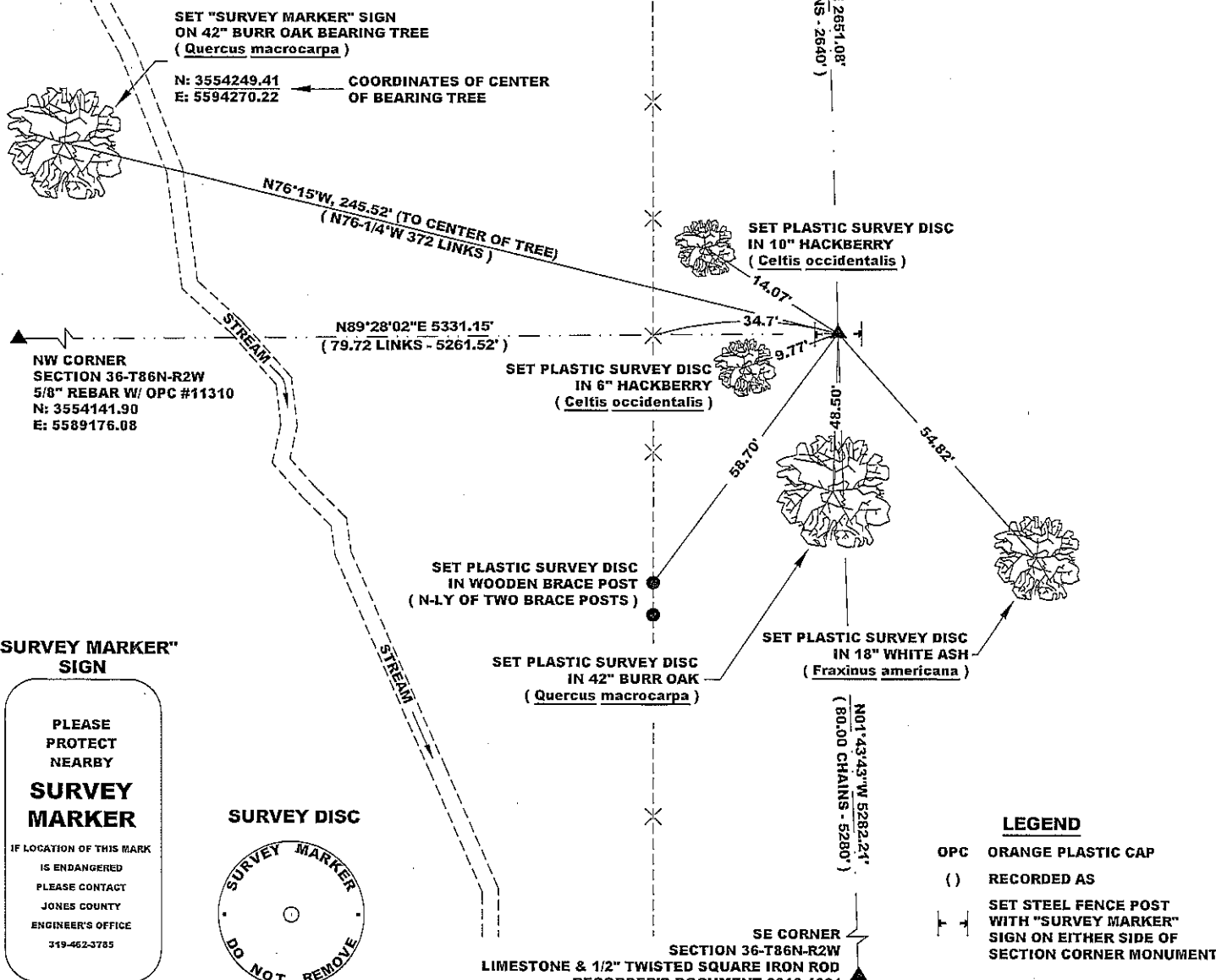
CORNER SECTION TOWNSHIP RANGE  
NE CORNER 36 T86N R2W

E 1/4 CORNER  
SECTION 25-T86N-R2W  
5/8" REBAR W/ OPC #11310  
TO BE SET AT LATER DATE  
N: 3556841.68  
E: 5594438.86

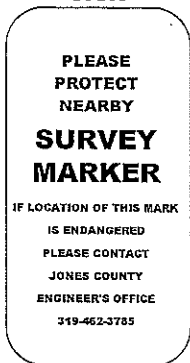


**NOTES:**

- 1) THE STATE PLANE COORDINATES AS SHOWN ARE FOR CONVENIENCE ONLY. THE TIES AS SHOWN SHOULD BE USED TO REPLACE THE CORNER, IF DESTROYED.
- 2) COORDINATES AS SHOWN ARE GRID COORDINATES AND BASED ON JONES COUNTY G.P.S. CONTROL NETWORK WHICH IN TURN IS BASED ON NAD 83 IOWA NORTH DATUM.
- 3) ALL MEASUREMENTS ARE IN FEET AND DECIMALS THEREOF.
- 4) \* GRID DISTANCE, BASED ON JONES COUNTY G.P.S. CONTROL NETWORK.



**"SURVEY MARKER" SIGN**

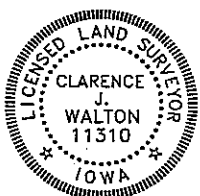


**SURVEY DISC**



PREVIOUSLY RECORDED IN N/A  
MONUMENT DESCRIPTION AND HOW ESTABLISHED SET 5/8" X 24" REBAR WITH ORANGE PLASTIC CAP #11310 3" ABOVE PRESENT GROUND SURFACE AS A TOE STUBBER. SET TWO STEEL FENCE POSTS WITH "SURVEY MARKER" SIGNS AS WITNESSES TO THE CORNER AND FOR PROTECTION OF THE CORNER. POSTS WERE SET ON THE EAST AND WEST SIDES OF THE CORNER FACING OUTWARD FROM THE CORNER. PLEASE REFER TO PAGE 1 OF 2 FOR A MORE DETAILED NARRATIVE.

PERSONAL DIARY & FIELD BOOK 341, PAGE 71 DATE OF SURVEY: 11/23/11



I hereby certify that this land surveying document and the related survey work was performed by me or under my direct personal supervision and that I am a duly registered Land Surveyor under the laws of the State of Iowa.  
Signed: *Clarence J. Walton* 12/30/11  
Clarence J. Walton, L.S.  
My Registration Renewal Date is December 31, 2011  
Iowa License Number 11310  
Pages or sheets covered by this seal: 2 of 2.

- A. THERE IS NO CERTIFICATE FOR THE CORNER ON FILE WITH THE RECORDER OF THE COUNTY IN WHICH THE CORNER IS LOCATED.
- B. THE CORNER MONUMENT HAS BEEN REPLACED OR MODIFIED.
- C. THE SURVEYOR IN RESPONSIBLE CHARGE OF THE LAND SURVEYING ACCEPTS A CORNER POSITION THAT DIFFERS FROM THAT SHOWN IN THE PUBLIC RECORDS OF THE COUNTY IN WHICH THE CORNER IS LOCATED.
- D. THE REFERENCE TIES REFERRED TO IN AN EXISTING PUBLIC RECORD NO LONGER EXIST.
- E. EXISTING CORNER TIES UPDATED.

**CORNERS TO BE INDEXED**

CORNER	SECTION	TOWNSHIP	RANGE
NE	36	86N	2W
SE	25	86N	2W
SW	30	86N	1W
NW	31	86N	1W

**JONES COUNTY ENGINEER'S OFFICE**



19501 HWY. 64, ANAMOSA, IOWA 52205  
(319) 462-3785