

COPY

Jones County Marie Krutzfield Recorder
 Fee Book 2011 3371
 12/30/2011 @1155AM # Pages 1
 ZSC SEC COR CERT
 Total Fees: \$0.00

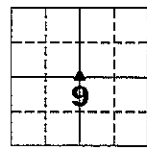
PREPARED BY
 CLARENCE J. WALTON, JONES COUNTY ENGINEER'S OFFICE, 19501 HWY. 64, ANAMOSA, IOWA, 52205 (319) 462-3785

UNITED STATES PUBLIC LAND SURVEY CORNER CERTIFICATE

LAND SURVEY MONUMENTS SITUATED IN SECTION 9, TOWNSHIP 86 NORTH,
 RANGE 2 WEST OF THE 5TH PRINCIPAL MERIDIAN, JONES COUNTY, IOWA.

STATE PLANE COORDINATE
 NAD 83 IOWA NORTH
 N 3572386.69
 E 5578029.69

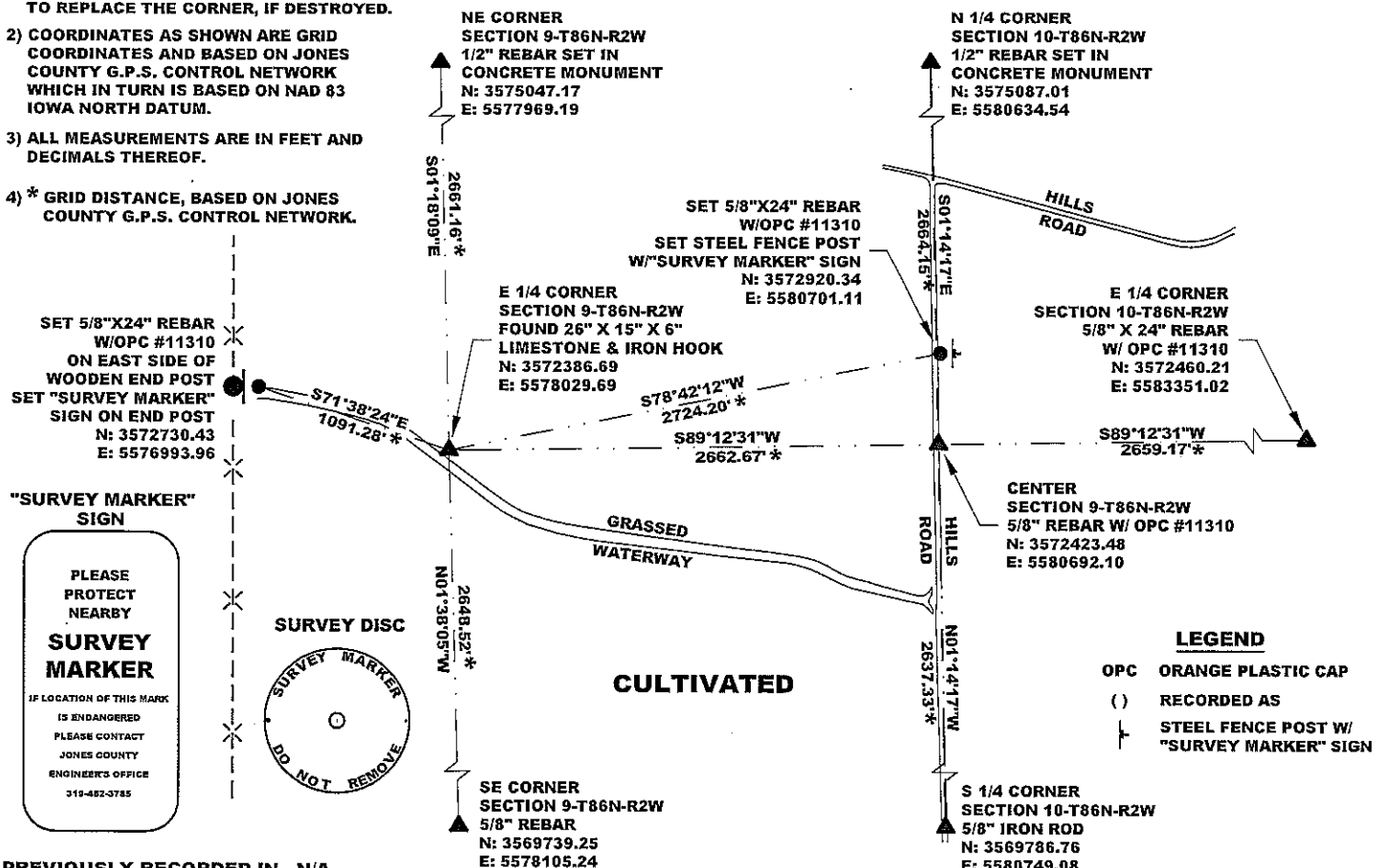
CORNER SECTION TOWNSHIP RANGE
 CENTER 9 T86N R2W



NO SCALE

NOTES:

- 1) THE STATE PLANE COORDINATES AS SHOWN ARE FOR CONVENIENCE ONLY. THE TIES AS SHOWN SHOULD BE USED TO REPLACE THE CORNER, IF DESTROYED.
- 2) COORDINATES AS SHOWN ARE GRID COORDINATES AND BASED ON JONES COUNTY G.P.S. CONTROL NETWORK WHICH IN TURN IS BASED ON NAD 83 IOWA NORTH DATUM.
- 3) ALL MEASUREMENTS ARE IN FEET AND DECIMALS THEREOF.
- 4) * GRID DISTANCE, BASED ON JONES COUNTY G.P.S. CONTROL NETWORK.



"SURVEY MARKER" SIGN

PLEASE PROTECT NEARBY

SURVEY MARKER

IF LOCATION OF THIS MARK IS ENDANGERED PLEASE CONTACT JONES COUNTY ENGINEER'S OFFICE 319-462-3785



- LEGEND**
- OPC ORANGE PLASTIC CAP
 - () RECORDED AS
 - STEEL FENCE POST W/ "SURVEY MARKER" SIGN

PREVIOUSLY RECORDED IN N/A

MONUMENT DESCRIPTION AND HOW ESTABLISHED FOUND 28" X 15" X 6" LIMESTONE STANDING ON END, POINT UP. FOUND STONE BY REASON THAT THERE WAS A BENT IRON HOOK BURIED ON TOP OF STONE WHICH GAVE A SIGNAL ON THE METAL FINDER. ALSO, A ROTTED CORNER POST WAS ON THE SOUTH SIDE OF THE STONE AS WELL AS VERY OLD BARBED WIRE, SOME OF WHICH WAS WRAPPED AROUND ITSELF AS FOUND ON A CORNER POST. AS THE TOP OF THE STONE WAS ONLY 10" DEEP, WE LOWERED STONE TO DEPTH OF 26". WE SET A 5/8" X 48" REBAR WITH A PERMANENT MAGNET WRAPPED ONTO THE REBAR BY THE SOUTH SIDE OF THE STONE, AND WE STRAIGHTENED THE IRON HOOK AND PLACED IT ON THE NORTH SIDE OF THE STONE FOR ADDED DETECTION.

FIELD BOOK 341, PAGE 73 DATE OF SURVEY: DECEMBER 7, 2011



I hereby certify that this land surveying document and the related survey work was performed by me or under my direct personal supervision and that I am a duly registered Land Surveyor under the laws of the State of Iowa.

Signed: *Clarence J. Walton* 12/30/11

Clarence J. Walton, L.S.
 My Registration Renewal Date is December 31, 2011
 Iowa License Number 11310
 Pages or sheets covered by this seal: 1 of 1.

- A. THERE IS NO CERTIFICATE FOR THE CORNER ON FILE WITH THE RECORDER OF THE COUNTY IN WHICH THE CORNER IS LOCATED.
- B. THE CORNER MONUMENT HAS BEEN REPLACED OR MODIFIED.
- C. THE SURVEYOR IN RESPONSIBLE CHARGE OF THE LAND SURVEYING ACCEPTS A CORNER POSITION THAT DIFFERS FROM THAT SHOWN IN THE PUBLIC RECORDS OF THE COUNTY IN WHICH THE CORNER IS LOCATED.
- D. THE REFERENCE TIES REFERRED TO IN AN EXISTING PUBLIC RECORD NO LONGER EXIST.
- E. EXISTING CORNER TIES UPDATED.

CORNERS TO BE INDEXED

CORNER	SECTION	TOWNSHIP	RANGE
E 1/4 CORNER	9	86N	2W
W 1/4 CORNER	10	86N	2W

JONES COUNTY ENGINEER'S OFFICE

19501 HWY. 64, ANAMOSA, IOWA 52205
 (319) 462-3785