

FILED  
RECORDERS OFFICE  
JONES COUNTY IOWA

05 JAN 14 PM 1:46

MARIE KRUTZFIELD 7.00Pd

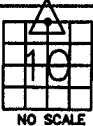
J.D. TJEPKES, LS. 14807, 23428 RIDGE ROAD, ANAMOSA, IOWA 52205 (319-462-6067)

# UNITED STATES PUBLIC LAND SURVEY CORNER CERTIFICATE

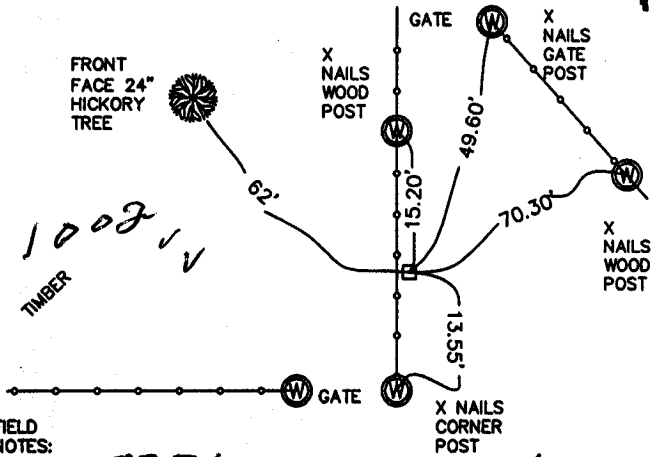
LAND SURVEY MONUMENTS SITUATED IN SECTION 10, TOWNSHIP 83  
NORTH, RANGE 3 WEST OF THE 5TH P.M., JONES COUNTY, IOWA

### CORNERS TO BE INDEXED

CORNER SECTION TOWNSHIP RANGE  
N1/4 10 83N 3W



OFFICE FILE NO. \_\_\_\_\_



FIELD NOTES:  
1-24-2004  
POWELL

833100-011405 + 1/8

PREVIOUSLY RECORDED IN BOOK NA, PAGE NA  
MONUMENT DESCRIPTION AND HOW ESTABLISHED \_\_\_\_\_  
PER TIES ON RECORD IN JONES CO. ENGINEER'S OFFICE DATED 1936, FOUND  
STANDARD CONCRETE MONUMENT 13.55' NORTH OF CORNER POST ON EAST  
SIDE OF FENCE, 3" ABOVE PRESENT GROUND. RETIED AS INDICATED.

### CORNERS TO BE INDEXED

CORNER SECTION TOWNSHIP RANGE

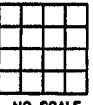


OFFICE FILE NO. \_\_\_\_\_

PREVIOUSLY RECORDED IN BOOK \_\_\_\_\_, PAGE \_\_\_\_\_  
MONUMENT DESCRIPTION AND HOW ESTABLISHED \_\_\_\_\_

### CORNERS TO BE INDEXED

CORNER SECTION TOWNSHIP RANGE

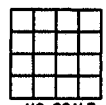


OFFICE FILE NO. \_\_\_\_\_

PREVIOUSLY RECORDED IN BOOK \_\_\_\_\_, PAGE \_\_\_\_\_  
MONUMENT DESCRIPTION AND HOW ESTABLISHED \_\_\_\_\_

### CORNERS TO BE INDEXED

CORNER SECTION TOWNSHIP RANGE



OFFICE FILE NO. \_\_\_\_\_

PREVIOUSLY RECORDED IN BOOK \_\_\_\_\_, PAGE \_\_\_\_\_  
MONUMENT DESCRIPTION AND HOW ESTABLISHED \_\_\_\_\_

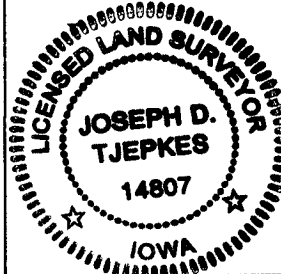
I hereby declare that this plat, survey or report was made by me or under my direct personal supervision and that I am a duly registered Land Surveyor under the laws of the State of Iowa.

Signed:

*[Signature]* 1-14-05

Joseph D. Tjepkes L.S. Iowa Reg. No. 14807  
My Registration Renewal Date is December 31, 2006

SEAL



J.D. TJEPKES LS 14807  
23428 RIDGE ROAD  
ANAMOSA, IOWA,  
52205 (319)462-6067

# UNITED STATES PUBLIC LAND SURVEY CORNER CERTIFICATE

LAND SURVEY MONUMENTS SITUATED IN SECTION 10, TOWNSHIP 83  
NORTH, RANGE 3 WEST OF THE 5TH P.M., JONES COUNTY, IOWA

*1002* CORNERS TO BE INDEXED

|        |         |          |       |
|--------|---------|----------|-------|
| CORNER | SECTION | TOWNSHIP | RANGE |
| N1/4   | 10      | 83N      | 3W    |

OFFICE FILE NO. \_\_\_\_\_  
83310c\_071001

NOTE:  
TIES AS INDICATED ARE FROM COUNTY SURVEY RECORDS (1936)  
NO CERTIFICATE FILED ON THIS CORNER.

REFERENCE:  
JONES COUNTY CORNER STONE BOOK 8, PAGE 26  
FOUND LIMESTONE IN N-S FENCE LINE, LOWERED STONE, SET S.C.M. DIRECTLY OVER WITH TOP FLUSH TO GROUND

PREVIOUSLY RECORDED IN BOOK N/A, PAGE N/A  
MONUMENT DESCRIPTION AND HOW ESTABLISHED \_\_\_\_\_

NO CERTIFICATE FILED ON THIS CORNER, SEE DESCRIPTION ABOVE

CORNERS TO BE INDEXED

|        |         |          |       |
|--------|---------|----------|-------|
| CORNER | SECTION | TOWNSHIP | RANGE |
|        |         |          |       |

OFFICE FILE NO. \_\_\_\_\_

*10-83-3*

PREVIOUSLY RECORDED IN BOOK \_\_\_\_\_, PAGE \_\_\_\_\_  
MONUMENT DESCRIPTION AND HOW ESTABLISHED \_\_\_\_\_

CORNERS TO BE INDEXED

|        |         |          |       |
|--------|---------|----------|-------|
| CORNER | SECTION | TOWNSHIP | RANGE |
|        |         |          |       |

OFFICE FILE NO. \_\_\_\_\_

PREVIOUSLY RECORDED IN BOOK \_\_\_\_\_, PAGE \_\_\_\_\_  
MONUMENT DESCRIPTION AND HOW ESTABLISHED \_\_\_\_\_

CORNERS TO BE INDEXED

|        |         |          |       |
|--------|---------|----------|-------|
| CORNER | SECTION | TOWNSHIP | RANGE |
|        |         |          |       |

OFFICE FILE NO. \_\_\_\_\_

PREVIOUSLY RECORDED IN BOOK \_\_\_\_\_, PAGE \_\_\_\_\_  
MONUMENT DESCRIPTION AND HOW ESTABLISHED \_\_\_\_\_

~~I hereby declare that this plat, survey or report was made by me or under my direct personal supervision and that I am a duly registered Land Surveyor under the laws of the State of Iowa.~~

Signed: \_\_\_\_\_

Joseph D. Tjepkes L.S. Iowa Reg. No. 14807  
My Registration Renewal Date is December 31, 2002

SEAL

JONES COUNTY ENGINEER'S OFFICE

19501 HWY. 64,  
ANAMOSA, IOWA,  
52205 (319)462-3785