

2005 0185

FILED
RECORDERS OFFICE
JONES COUNTY IOWA

05 JAN 14 PM 1:45

MARIE KRUTZFIELD
RECORDER 7.00 pd

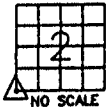
J.D. TJEPKES, LS.14807, 23428 RIDGE ROAD, ANAMOSA, IOWA, 52205. (319-462-6067)

UNITED STATES PUBLIC LAND SURVEY CORNER CERTIFICATE

LAND SURVEY MONUMENTS SITUATED IN SECTION 2, TOWNSHIP 83
NORTH, RANGE 3 WEST OF THE 5TH P.M., JONES COUNTY, IOWA

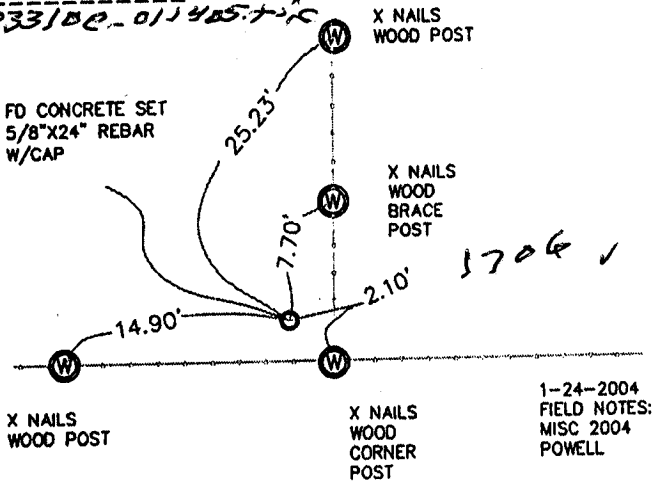
CORNERS TO BE INDEXED

CORNER SECTION TOWNSHIP RANGE
SW 2 83N 3W



OFFICE FILE NO.

833100-011405.716



1-24-2004
FIELD NOTES:
MISC 2004
POWELL

PREVIOUSLY RECORDED IN BOOK NA PAGE NA
MONUMENT DESCRIPTION AND HOW ESTABLISHED _____

PER PROPORTIONATE DISTANCES NORTH & SOUTH, AND PHYSICAL EVIDENCE EAST-WEST, FOUND 6\"/>

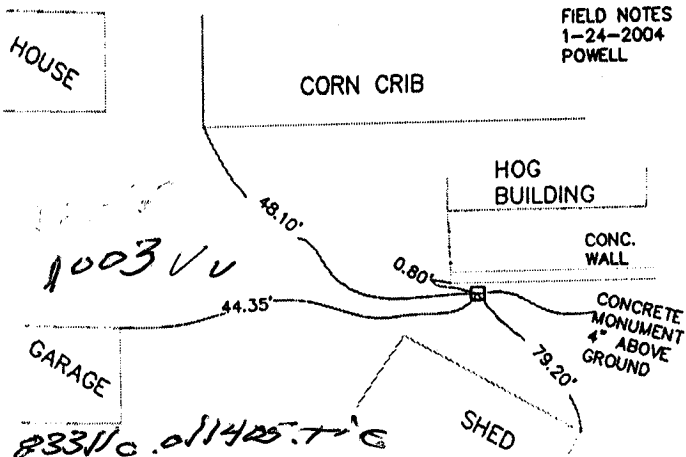
CORNERS TO BE INDEXED

CORNER SECTION TOWNSHIP RANGE
S1/4 2 83N 3W



OFFICE FILE NO.

FIELD NOTES
1-24-2004
POWELL



PREVIOUSLY RECORDED IN BOOK NA PAGE NA
MONUMENT DESCRIPTION AND HOW ESTABLISHED _____

PER TIES ON RECORD IN JONES CO. ENGINEER'S OFFICE, FOUND STANDARD CONCRETE MONUMENT ALONG CONCRETE WALL OF HOG LOT. RETIED AS INDICATED.

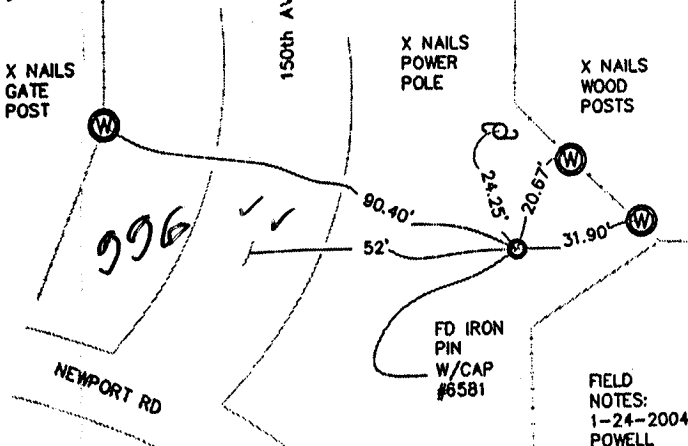
CORNERS TO BE INDEXED

CORNER SECTION TOWNSHIP RANGE
W1/4 2 83N 3W



OFFICE FILE NO.

833030-011405.716



FIELD NOTES:
1-24-2004
POWELL

PREVIOUSLY RECORDED IN BOOK NA PAGE NA
MONUMENT DESCRIPTION AND HOW ESTABLISHED _____

PER TIES ON RECORD IN JONES COUNTY ENGINEER'S OFFICE, AND PLAT OF SURVEY FILED BY LS DILLON (#6581), AND RECORDED IN JONES COUNTY'S RECORDERS OFFICE IN BK "I" PAGE 9. FOUND IRON PIN WITH CAP #6581 FLUSH WITH GROUND. RETIED AS INDICATED.

CORNERS TO BE INDEXED

CORNER SECTION TOWNSHIP RANGE



OFFICE FILE NO.

PREVIOUSLY RECORDED IN BOOK _____ PAGE _____
MONUMENT DESCRIPTION AND HOW ESTABLISHED _____

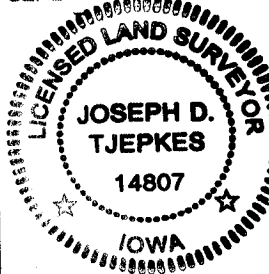
I hereby declare that this plat, survey or report was made by me or under my direct personal supervision and that I am a duly registered Land Surveyor under the laws of the State of Iowa.

Signed:

[Signature] 1-14-05

Joseph D. Tjepkes L.S. Iowa Reg. No. 14807
My Registration Renewal Date is December 31, 2006

SEAL



J.D. TJEPKES LS 14807
23428 RIDGE ROAD
ANAMOSA, IOWA, 52205
(319-462-6067)

I