

2005 0185

FILED  
RECORDERS OFFICE  
JONES COUNTY IOWA

05 JAN 14 PM 1:45

MARIE KRUTZFIELD  
RECORDER 7.00 pd

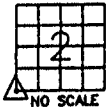
J.D. TJEPKES, LS.14807, 23428 RIDGE ROAD, ANAMOSA, IOWA, 52205. (319-462-6067)

# UNITED STATES PUBLIC LAND SURVEY CORNER CERTIFICATE

LAND SURVEY MONUMENTS SITUATED IN SECTION 2, TOWNSHIP 83  
NORTH, RANGE 3 WEST OF THE 5TH P.M., JONES COUNTY, IOWA

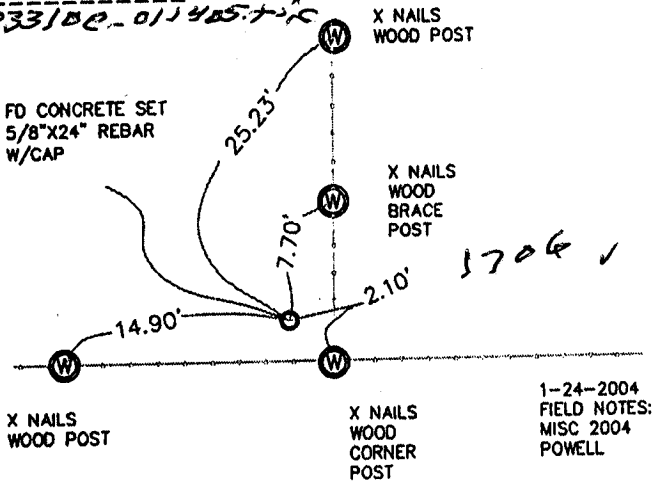
### CORNERS TO BE INDEXED

CORNER SECTION TOWNSHIP RANGE  
SW 2 83N 3W



OFFICE FILE NO.

833100-011405.716



1-24-2004  
FIELD NOTES:  
MISC 2004  
POWELL

PREVIOUSLY RECORDED IN BOOK NA PAGE NA  
MONUMENT DESCRIPTION AND HOW ESTABLISHED \_\_\_\_\_

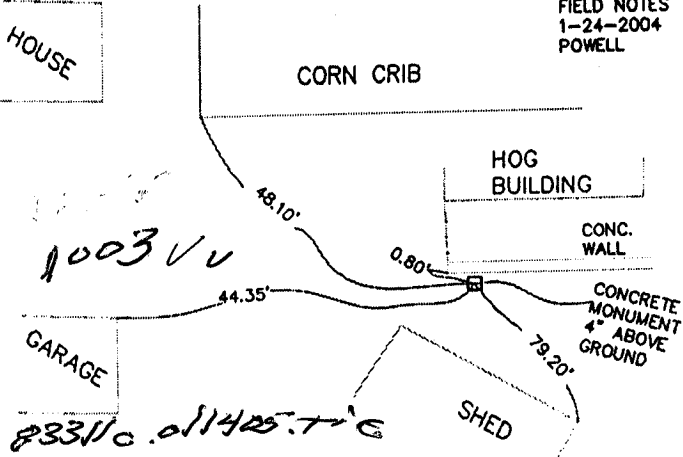
PER PROPORTIONATE DISTANCES NORTH & SOUTH, AND PHYSICAL EVIDENCE EAST-WEST, FOUND 6\"/>

### CORNERS TO BE INDEXED

CORNER SECTION TOWNSHIP RANGE  
S1/4 2 83N 3W



OFFICE FILE NO.



FIELD NOTES  
1-24-2004  
POWELL

PREVIOUSLY RECORDED IN BOOK NA PAGE NA  
MONUMENT DESCRIPTION AND HOW ESTABLISHED \_\_\_\_\_

PER TIES ON RECORD IN JONES CO. ENGINEER'S OFFICE, FOUND STANDARD CONCRETE MONUMENT ALONG CONCRETE WALL OF HOG LOT. RETIED AS INDICATED.

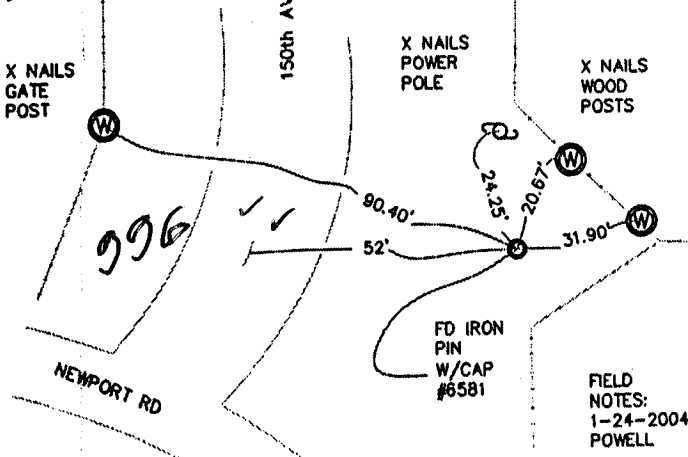
### CORNERS TO BE INDEXED

CORNER SECTION TOWNSHIP RANGE  
W1/4 2 83N 3W



OFFICE FILE NO.

833030-011405.716



FIELD NOTES:  
1-24-2004  
POWELL

PREVIOUSLY RECORDED IN BOOK NA PAGE NA  
MONUMENT DESCRIPTION AND HOW ESTABLISHED \_\_\_\_\_

PER TIES ON RECORD IN JONES COUNTY ENGINEER'S OFFICE, AND PLAT OF SURVEY FILED BY LS DILLON (#6581), AND RECORDED IN JONES COUNTY'S RECORDERS OFFICE IN BK "I" PAGE 9. FOUND IRON PIN WITH CAP #6581 FLUSH WITH GROUND. RETIED AS INDICATED.

### CORNERS TO BE INDEXED

CORNER SECTION TOWNSHIP RANGE



OFFICE FILE NO.

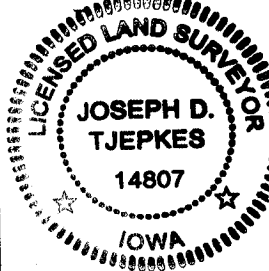
PREVIOUSLY RECORDED IN BOOK \_\_\_\_\_ PAGE \_\_\_\_\_  
MONUMENT DESCRIPTION AND HOW ESTABLISHED \_\_\_\_\_

I hereby declare that this plat, survey or report was made by me or under my direct personal supervision and that I am a duly registered Land Surveyor under the laws of the State of Iowa.

Signed: [Signature] 1-14-05

Joseph D. Tjepkes L.S. Iowa Reg. No. 14807  
My Registration Renewal Date is December 31, 2006

SEAL



J.D. TJEPKES LS 14807  
23428 RIDGE ROAD  
ANAMOSA, IOWA, 52205  
(319-462-6067)

I

# UNITED STATES PUBLIC LAND SURVEY CORNER CERTIFICATE

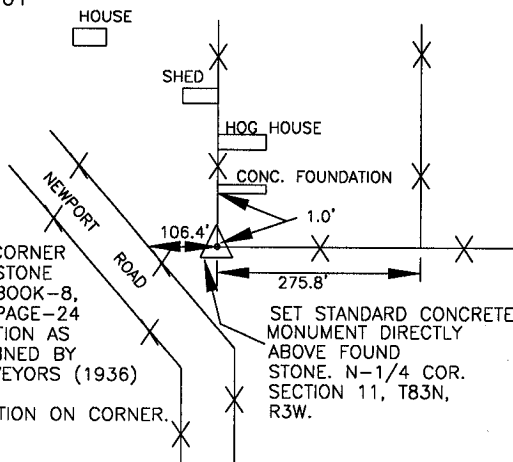
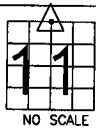
LAND SURVEY MONUMENTS SITUATED IN SECTION 11, TOWNSHIP 83  
NORTH, RANGE 3 WEST OF THE 5TH P.M., JONES COUNTY, IOWA

1003 CORNERS TO BE INDEXED

CORNER SECTION TOWNSHIP RANGE  
N-1/4 11 83N 3W

OFFICE FILE NO.

83311c\_071001

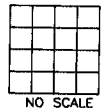


PREVIOUSLY RECORDED IN BOOK N/A, PAGE N/A  
MONUMENT DESCRIPTION AND HOW ESTABLISHED  
LIMESTONE UNDER FENCE, LOWERED STONE SET S.C.M. DIRECTLY  
ABOVE WITH TOP OF MONUMENT FLUSH WITH GROUND. TIES ARE AS  
INDICATED. NORTH 1/4 SEC. 11, T83N, R3W OF 5TH P.M.,  
JONES COUNTY, IOWA

CORNERS TO BE INDEXED

CORNER SECTION TOWNSHIP RANGE

OFFICE FILE NO.



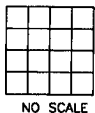
11-83-3

PREVIOUSLY RECORDED IN BOOK \_\_\_\_\_, PAGE \_\_\_\_\_  
MONUMENT DESCRIPTION AND HOW ESTABLISHED \_\_\_\_\_  
\_\_\_\_\_  
\_\_\_\_\_

CORNERS TO BE INDEXED

CORNER SECTION TOWNSHIP RANGE

OFFICE FILE NO.

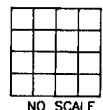


PREVIOUSLY RECORDED IN BOOK \_\_\_\_\_, PAGE \_\_\_\_\_  
MONUMENT DESCRIPTION AND HOW ESTABLISHED \_\_\_\_\_  
\_\_\_\_\_  
\_\_\_\_\_

CORNERS TO BE INDEXED

CORNER SECTION TOWNSHIP RANGE

OFFICE FILE NO.



PREVIOUSLY RECORDED IN BOOK \_\_\_\_\_, PAGE \_\_\_\_\_  
MONUMENT DESCRIPTION AND HOW ESTABLISHED \_\_\_\_\_  
\_\_\_\_\_  
\_\_\_\_\_

~~I hereby declare that this plat, survey or report was made by me or under my direct personal supervision and that I am a duly registered Land Surveyor under the laws of the State of Iowa.~~

Signed: \_\_\_\_\_

~~Joseph D. Tjepkes L.S. Iowa Reg. No. 14807  
My Registration Renewal Date is December 31, 2002~~

SEAL

JONES COUNTY  
ENGINEER'S OFFICE

19501 HWY. 64,  
ANAMOSA, IOWA,  
52205 (319)462-3785