

2006 0833

FILED
RECORDERS OFFICE
JONES COUNTY IOWA

06 MAR -8 PM 3:49

MAKIE KRUTZFIELD
RECORDER 7.00 Pct

J.D. TJEPKES, LS. 14807, 23428 RIDGE ROAD, ANAMOSA, IOWA, 52205 (319-462-6067)

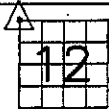
UNITED STATES PUBLIC LAND SURVEY CORNER CERTIFICATE

LAND SURVEY MONUMENTS SITUATED IN SECTION 12, TOWNSHIP 83
NORTH, RANGE 3 WEST OF THE 5TH P.M., JONES COUNTY, IOWA

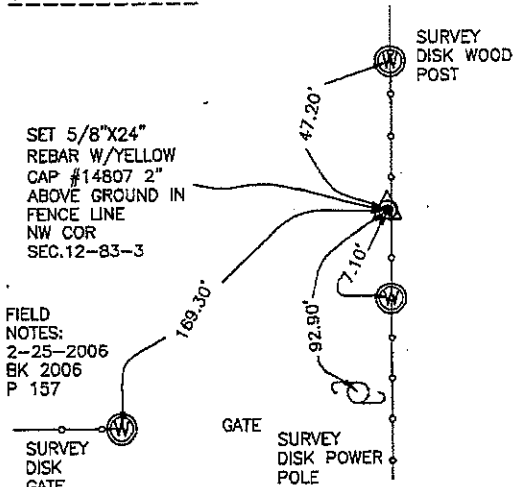
CORNERS TO BE INDEXED

CORNER SECTION TOWNSHIP RANGE
NW 12 83N 3W

OFFICE FILE NO. _____



NO SCALE



FIELD NOTES:
2-25-2006
BK 2006
P 157

PREVIOUSLY RECORDED IN BOOK _____, PAGE _____
MONUMENT DESCRIPTION AND HOW ESTABLISHED SET
5/8"X24" REBAR W/YELLOW CAP LS 14807 IN FENCE LINE PER
PHYSICAL EVIDENCE. NORTHWEST CORNER SECTION 12,
TOWNSHIP 83 NORTH, RANGE 3 WEST OF THE 5TH PRINCIPAL
MERIDIAN, JONES COUNTY, IOWA. SET TIES AS INDICATED.

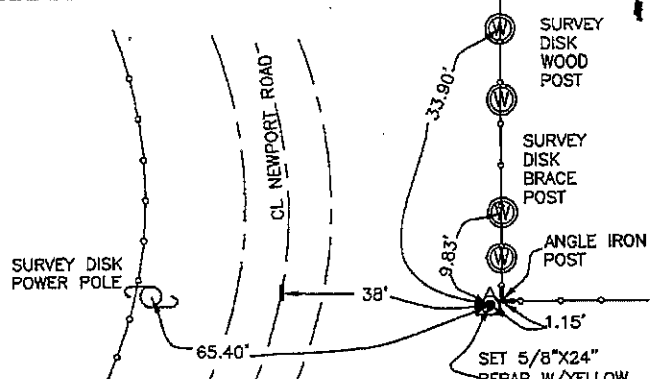
CORNERS TO BE INDEXED

CORNER SECTION TOWNSHIP RANGE
NW 12 83N 3W

OFFICE FILE NO. _____



NO SCALE



FIELD NOTES:
2-25-2006
BK 2006
P 158

PREVIOUSLY RECORDED IN BOOK _____, PAGE _____
MONUMENT DESCRIPTION AND HOW ESTABLISHED SET
5/8"X24" REBAR W/YELLOW CAP LS 14807 PER PHYSICAL
EVIDENCE AT COR. POST. WEST QUARTER CORNER SECTION 12,
TOWNSHIP 83 NORTH, RANGE 3 WEST OF THE 5TH PRINCIPAL
MERIDIAN, JONES COUNTY, IOWA. SET TIES AS INDICATED.

CORNERS TO BE INDEXED

CORNER SECTION TOWNSHIP RANGE

OFFICE FILE NO. _____

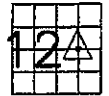


NO SCALE

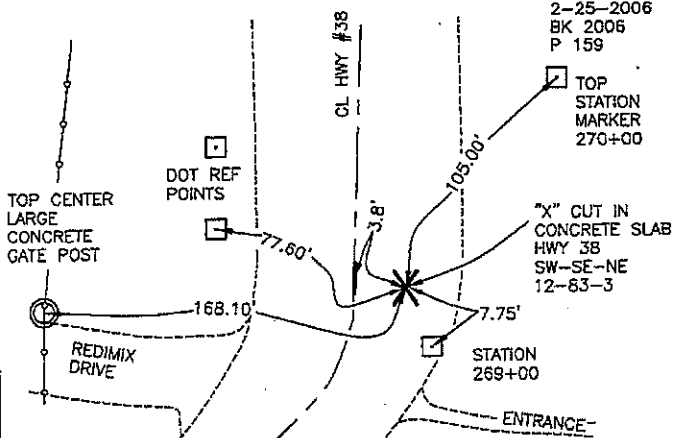
CORNERS TO BE INDEXED

CORNER SECTION TOWNSHIP RANGE
SW COR. 12 83N 3W

OFFICE FILE NO. _____



NO SCALE



FIELD NOTES:
2-25-2006
BK 2006
P 159

PREVIOUSLY RECORDED IN BOOK _____, PAGE _____
MONUMENT DESCRIPTION AND HOW ESTABLISHED CUT CROSS
IN CONCRETE PAVEMENT 3.8 FEET EAST OF CENTERLINE. STATION OF QUARTER
SECTION LINE SHOWN ON STATE HIGHWAY PLANS FN-38-3(17)-21-53,
STATION 269+00.6. SET TIES AS INDICATED. SOUTHWEST CORNER, SOUTHWEST
QUARTER, NORTHWEST QUARTER SECTION 12, T83N, R3W, 5TH PM, JONES
COUNTY, IOWA.

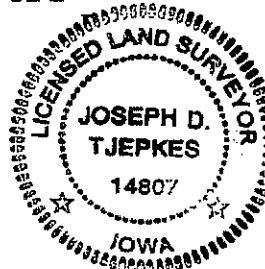
I hereby declare that this plat, survey or report was made by me or under my direct personal supervision and that I am a duly registered Land Surveyor under the laws of the State of Iowa.

Signed:

[Signature] 3-07-06

Joseph D. Tjepkes L.S. Iowa Reg. No. 14807
My Registration Renewal Date is December 31, 2006

SEAL



J.D. TJEPKES LS 14807
23428 RIDGE ROAD
ANAMOSA, IOWA, 52205
(319)-462-6067