

COPY

Jones County Marie Krutzfield Recorder  
Fee Book 2012 2494  
08/24/2012 @1038AM # Pages 2  
ZSC SEC COR CERT  
Total Fees: \$0.00

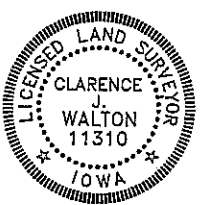
PREPARED BY  
CLARENCE J. WALTON, JONES COUNTY ENGINEER'S OFFICE, 19501 HWY. 64, ANAMOSA, IOWA, 52205 (319) 462-3785

UNITED STATES PUBLIC LAND  
SURVEY CORNER CERTIFICATE

LAND SURVEY MONUMENTS SITUATED IN SECTION 12, TOWNSHIP 83 NORTH,  
RANGE 3 WEST OF THE 5TH PRINCIPAL MERIDIAN, JONES COUNTY, IOWA.

COVER SHEET  
FOR  
UNITED STATES PUBLIC LAND SURVEY  
CORNER CERTIFICATE  
REGARDING  
THE NE CORNER OF  
THE NW 1/4 SE 1/4  
SECTION 12, TOWNSHIP 83 NORTH, RANGE 3 WEST OF  
THE 5TH PRINCIPAL MERIDIAN, JONES COUNTY, IOWA.

PAGE 1 of 2



I hereby certify that this land surveying document and the related survey work was performed by me or under my direct personal supervision and that I am a duly registered Land Surveyor under the laws of the State of Iowa.

Signed: *Clarence J. Walton* 8/24/12  
Clarence J. Walton, L.S.  
My Registration Renewal Date is December 31, 2013  
Iowa License Number 11310  
Pages or sheets covered by this seal: 1 of 2.

- A. THERE IS NO CERTIFICATE FOR THE CORNER ON FILE WITH THE RECORDER OF THE COUNTY IN WHICH THE CORNER IS LOCATED.
- B. THE CORNER MONUMENT HAS BEEN REPLACED OR MODIFIED.
- C. THE SURVEYOR IN RESPONSIBLE CHARGE OF THE LAND SURVEYING ACCEPTS A CORNER POSITION THAT DIFFERS FROM THAT SHOWN IN THE PUBLIC RECORDS OF THE COUNTY IN WHICH THE CORNER IS LOCATED.
- D. THE REFERENCE TIES REFERRED TO IN AN EXISTING PUBLIC RECORD NO LONGER EXIST.

CORNERS TO BE INDEXED

CORNER	SECTION	TOWNSHIP	RANGE
NE CORNER	12	83N	3W
NW 1/4 SE 1/4	12	83N	3W
SE CORNER	12	83N	3W
SW 1/4 NE 1/4	12	83N	3W
SW CORNER	12	83N	3W
SE 1/4 NE 1/4	12	83N	3W
NW CORNER	12	83N	3W
NE 1/4 SE 1/4	12	83N	3W

JONES COUNTY ENGINEER'S OFFICE



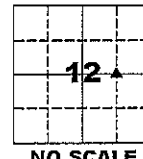
19501 HWY. 64, ANAMOSA, IOWA 52205  
(319) 462-3785

# UNITED STATES PUBLIC LAND SURVEY CORNER CERTIFICATE

**LAND SURVEY MONUMENTS SITUATED IN SECTION 12, TOWNSHIP 83 NORTH,  
RANGE 3 WEST OF THE 5TH PRINCIPAL MERIDIAN, JONES COUNTY, IOWA.**

STATE PLANE COORDINATE  
NAD 83 IOWA NORTH  
N: 3476450.99  
E: 5563423.22

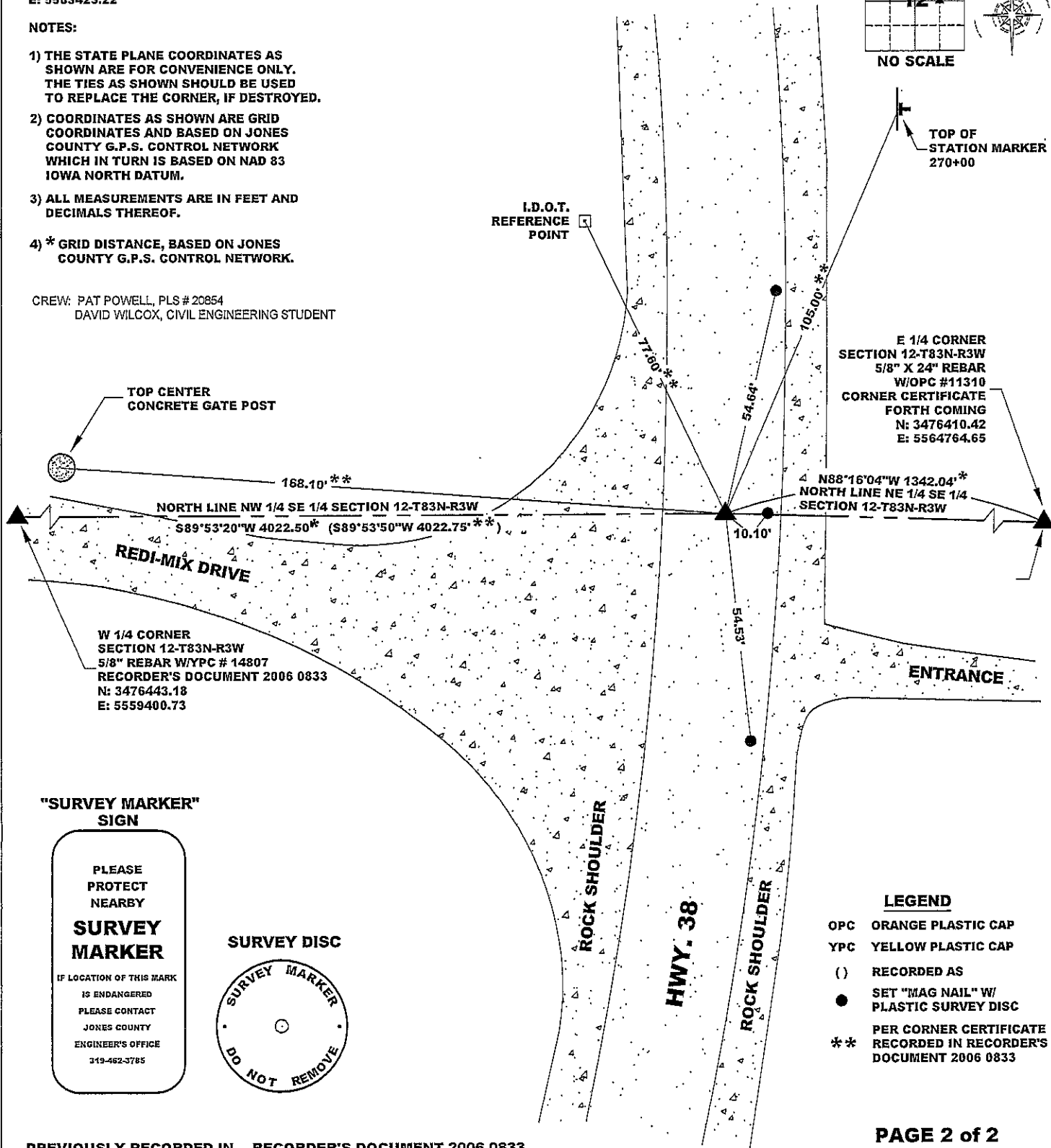
CORNER SECTION TOWNSHIP RANGE  
NE CORNER 12 83N 3W  
NW 1/4 SE 1/4



**NOTES:**

- 1) THE STATE PLANE COORDINATES AS SHOWN ARE FOR CONVENIENCE ONLY. THE TIES AS SHOWN SHOULD BE USED TO REPLACE THE CORNER, IF DESTROYED.
- 2) COORDINATES AS SHOWN ARE GRID COORDINATES AND BASED ON JONES COUNTY G.P.S. CONTROL NETWORK WHICH IN TURN IS BASED ON NAD 83 IOWA NORTH DATUM.
- 3) ALL MEASUREMENTS ARE IN FEET AND DECIMALS THEREOF.
- 4) \* GRID DISTANCE, BASED ON JONES COUNTY G.P.S. CONTROL NETWORK.

CREW: PAT POWELL, PLS # 20854  
DAVID WILCOX, CIVIL ENGINEERING STUDENT



**"SURVEY MARKER" SIGN**



**SURVEY DISC**



**LEGEND**

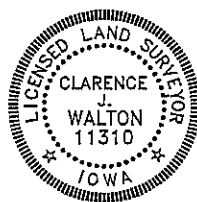
- OPC ORANGE PLASTIC CAP
- YPC YELLOW PLASTIC CAP
- ( ) RECORDED AS
- SET "MAG NAIL" W/ PLASTIC SURVEY DISC
- \*\* PER CORNER CERTIFICATE RECORDED IN RECORDER'S DOCUMENT 2006 0833

**PAGE 2 of 2**

PREVIOUSLY RECORDED IN RECORDER'S DOCUMENT 2006 0833

MONUMENT DESCRIPTION AND HOW ESTABLISHED SET "MAG NAIL" WITH PLASTIC SURVEY DISC IN ASPHALT OVERLAY USING TIES RECORDED IN RECORDER'S DOCUMENT 2006 0833 IN THE JONES COUNTY, IOWA RECORDER'S OFFICE. SET "MAG NAILS" WITH PLASTIC SURVEY DISCS ALONG E-LY EDGE OF ASPHALT PAVING. REMAINING TIES SHOWN ARE FROM SAID PREVIOUSLY RECORDED TIES. REFER TO PLAT OF SURVEY FOR PARCEL 2006-35 AS RECORDED IN PLAT BOOK Q, PAGE 166 AND IN RECORDER'S DOCUMENT 2006 0556 IN SAID JONES COUNTY, IOWA RECORDER'S OFFICE.

DATE OF SURVEY: JULY 9, 2012 FIELD BOOK: LOOSE NOTES, DATA COLLECTOR



I hereby certify that this land surveying document and the related survey work was performed by me or under my direct personal supervision and that I am a duly registered Land Surveyor under the laws of the State of Iowa.  
Signed: *Clarence J. Walton* 8/24/12  
Clarence J. Walton, L.S.  
My Registration Renewal Date is December 31, 2013  
Iowa License Number 11310  
Pages or sheets covered by this seal: 2 of 2.

- A. THERE IS NO CERTIFICATE FOR THE CORNER ON FILE WITH THE RECORDER OF THE COUNTY IN WHICH THE CORNER IS LOCATED.
- B. THE CORNER MONUMENT HAS BEEN REPLACED OR MODIFIED.
- C. THE SURVEYOR IN RESPONSIBLE CHARGE OF THE LAND SURVEYING ACCEPTS A CORNER POSITION THAT DIFFERS FROM THAT SHOWN IN THE PUBLIC RECORDS OF THE COUNTY IN WHICH THE CORNER IS LOCATED.
- D. THE REFERENCE TIES REFERRED TO IN AN EXISTING PUBLIC RECORD NO LONGER EXIST.

**CORNERS TO BE INDEXED**

CORNER	SECTION	TOWNSHIP	RANGE
NE CORNER	12	83N	3W
NW 1/4 SE 1/4	12	83N	3W
SE CORNER	12	83N	3W
SW 1/4 NE 1/4	12	83N	3W
SW CORNER	12	83N	3W
SE 1/4 NE 1/4	12	83N	3W
NW CORNER	12	83N	3W
NE 1/4 SE 1/4	12	83N	3W

**JONES COUNTY ENGINEER'S OFFICE**



19501 HWY. 64, ANAMOSA, IOWA 52205  
(319) 462-3785

2006 0833

FILED  
RECORDERS OFFICE  
JONES COUNTY IOWA

06 MAR -8 PM 3:49

MAKIE KRUTZFIELD  
RECORDER 7.00 PC

J.D. TJEPKES, LS. 14807, 23428 RIDGE ROAD, ANAMOSA, IOWA, 52205 (319-462-6067)

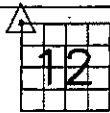
# UNITED STATES PUBLIC LAND SURVEY CORNER CERTIFICATE

LAND SURVEY MONUMENTS SITUATED IN SECTION 12, TOWNSHIP 83  
NORTH, RANGE 3 WEST OF THE 5TH P.M., JONES COUNTY, IOWA

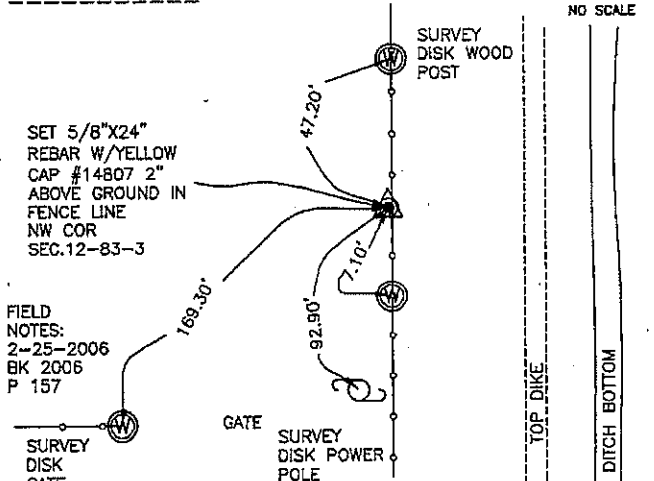
### CORNERS TO BE INDEXED

CORNER SECTION TOWNSHIP RANGE  
NW 12 83N 3W

OFFICE FILE NO. \_\_\_\_\_



NO SCALE



FIELD NOTES:  
2-25-2006  
BK 2006  
P 157

PREVIOUSLY RECORDED IN BOOK \_\_\_\_\_, PAGE \_\_\_\_\_  
MONUMENT DESCRIPTION AND HOW ESTABLISHED SET  
5/8"X24" REBAR W/YELLOW CAP LS 14807 IN FENCE LINE PER  
PHYSICAL EVIDENCE. NORTHWEST CORNER SECTION 12,  
TOWNSHIP 83 NORTH, RANGE 3 WEST OF THE 5TH PRINCIPAL  
MERIDIAN, JONES COUNTY, IOWA. SET TIES AS INDICATED.

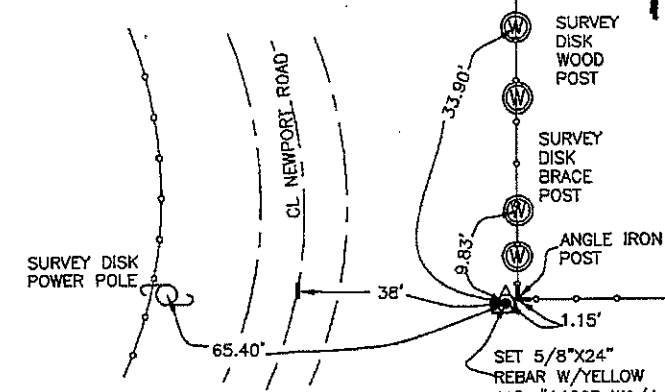
### CORNERS TO BE INDEXED

CORNER SECTION TOWNSHIP RANGE  
NW 12 83N 3W

OFFICE FILE NO. \_\_\_\_\_



NO SCALE



FIELD NOTES:  
2-25-2006  
BK 2006  
P 158

PREVIOUSLY RECORDED IN BOOK \_\_\_\_\_, PAGE \_\_\_\_\_  
MONUMENT DESCRIPTION AND HOW ESTABLISHED SET  
5/8"X24" REBAR W/YELLOW CAP LS 14807 PER PHYSICAL  
EVIDENCE AT COR. POST. WEST QUARTER CORNER SECTION 12,  
TOWNSHIP 83 NORTH, RANGE 3 WEST OF THE 5TH PRINCIPAL  
MERIDIAN, JONES COUNTY, IOWA. SET TIES AS INDICATED.

### CORNERS TO BE INDEXED

CORNER SECTION TOWNSHIP RANGE

OFFICE FILE NO. \_\_\_\_\_



NO SCALE



PREVIOUSLY RECORDED IN BOOK \_\_\_\_\_, PAGE \_\_\_\_\_  
MONUMENT DESCRIPTION AND HOW ESTABLISHED \_\_\_\_\_

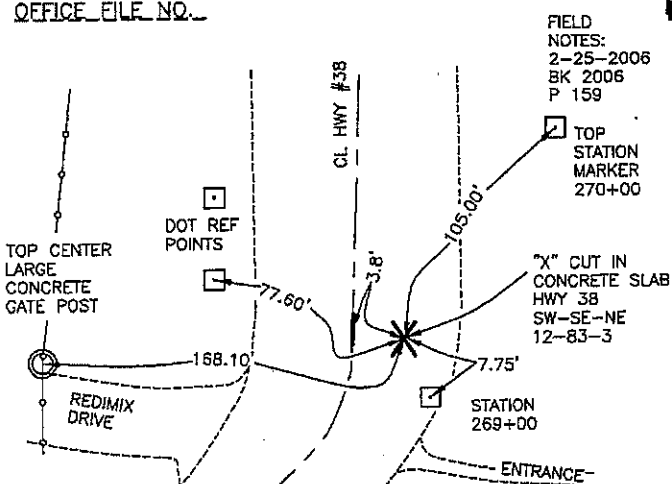
### CORNERS TO BE INDEXED

CORNER SECTION TOWNSHIP RANGE  
SW COR. 12 83N 3W

SE 1/4 NE 1/4  
OFFICE FILE NO. \_\_\_\_\_



NO SCALE



FIELD NOTES:  
2-25-2006  
BK 2006  
P 159

PREVIOUSLY RECORDED IN BOOK \_\_\_\_\_, PAGE \_\_\_\_\_  
MONUMENT DESCRIPTION AND HOW ESTABLISHED CUT CROSS  
IN CONCRETE PAVEMENT 3.8 FEET EAST OF CENTERLINE. STATION OF QUARTER  
SECTION LINE SHOWN ON STATE HIGHWAY PLANS FN-38-3(17)-21-53,  
STATION 269+00.6. SET TIES AS INDICATED. SOUTHWEST CORNER, SOUTHEAST  
QUARTER, NORTHWEST QUARTER SECTION 12, T83N, R3W, 5TH PM, JONES  
COUNTY, IOWA.

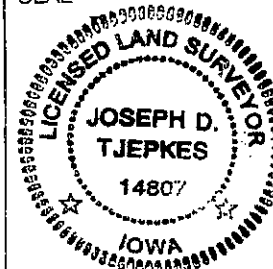
I hereby declare that this plat, survey or report was made by me or under my direct personal supervision and that I am a duly registered Land Surveyor under the laws of the State of Iowa.

Signed:

*[Signature]* 3-07-06

Joseph D. Tjepkes L.S. Iowa Reg. No. 14807  
My Registration Renewal Date is December 31, 2006

SEAL



J.D. TJEPKES LS 14807  
23428 RIDGE ROAD  
ANAMOSA, IOWA, 52205  
(319)-462-6067