

COPY

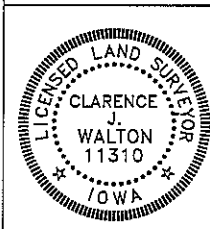
Jones County Marie Krutzfield Recorder
Fee Book 2012 3087
10/24/2012 @0304PM # Pages 2
ZSC SEC COR CERT
Total Fees: \$0.00

PREPARED BY
CLARENCE J. WALTON, JONES COUNTY ENGINEER'S OFFICE, 19501 HWY. 64, ANAMOSA, IOWA, 52205 (319) 462-3785

UNITED STATES PUBLIC LAND
SURVEY CORNER CERTIFICATE
LAND SURVEY MONUMENTS SITUATED IN SECTION 12, TOWNSHIP 83 NORTH,
RANGE 3 WEST OF THE 5TH PRINCIPAL MERIDIAN, JONES COUNTY, IOWA.

COVER SHEET
FOR
UNITED STATES PUBLIC LAND SURVEY
CORNER CERTIFICATE
REGARDING
THE E 1/4 CORNER OF
SECTION 12, TOWNSHIP 83 NORTH, RANGE 3 WEST OF
THE 5TH PRINCIPAL MERIDIAN, JONES COUNTY, IOWA.

PAGE 1 of 2



I hereby certify that this land surveying document and the related survey work was performed by me or under my direct personal supervision and that I am a duly registered Land Surveyor under the laws of the State of Iowa.

Signed: *Clarence J. Walton* 10/24/12
Clarence J. Walton, L.S.
My Registration Renewal Date is December 31, 2013
Iowa License Number 11310
Pages or sheets covered by this seal: 1 of 2.

- A. THERE IS NO CERTIFICATE FOR THE CORNER ON FILE WITH THE RECORDER OF THE COUNTY IN WHICH THE CORNER IS LOCATED.
- B. THE CORNER MONUMENT HAS BEEN REPLACED OR MODIFIED.
- C. THE SURVEYOR IN RESPONSIBLE CHARGE OF THE LAND SURVEYING ACCEPTS A CORNER POSITION THAT DIFFERS FROM THAT SHOWN IN THE PUBLIC RECORDS OF THE COUNTY IN WHICH THE CORNER IS LOCATED.
- D. THE REFERENCE TIES REFERRED TO IN AN EXISTING PUBLIC RECORD NO LONGER EXIST.

CORNERS TO BE INDEXED

CORNER	SECTION	TOWNSHIP	RANGE
E 1/4 CORNER	12	83N	3W
W 1/4 CORNER	7	83N	3W

JONES COUNTY ENGINEER'S OFFICE



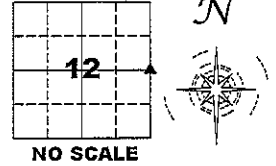
19501 HWY. 64, ANAMOSA, IOWA 52205
(319) 462-3785

UNITED STATES PUBLIC LAND SURVEY CORNER CERTIFICATE

LAND SURVEY MONUMENTS SITUATED IN SECTION 12, TOWNSHIP 83 NORTH,
 RANGE 3 WEST OF THE 5TH PRINCIPAL MERIDIAN, JONES COUNTY, IOWA.

STATE PLANE COORDINATE
 NAD 83 IOWA NORTH
 N: 3476410.42
 E: 5564764.65

CORNER SECTION TOWNSHIP RANGE
 E 1/4 CORNER 12 83N 3W

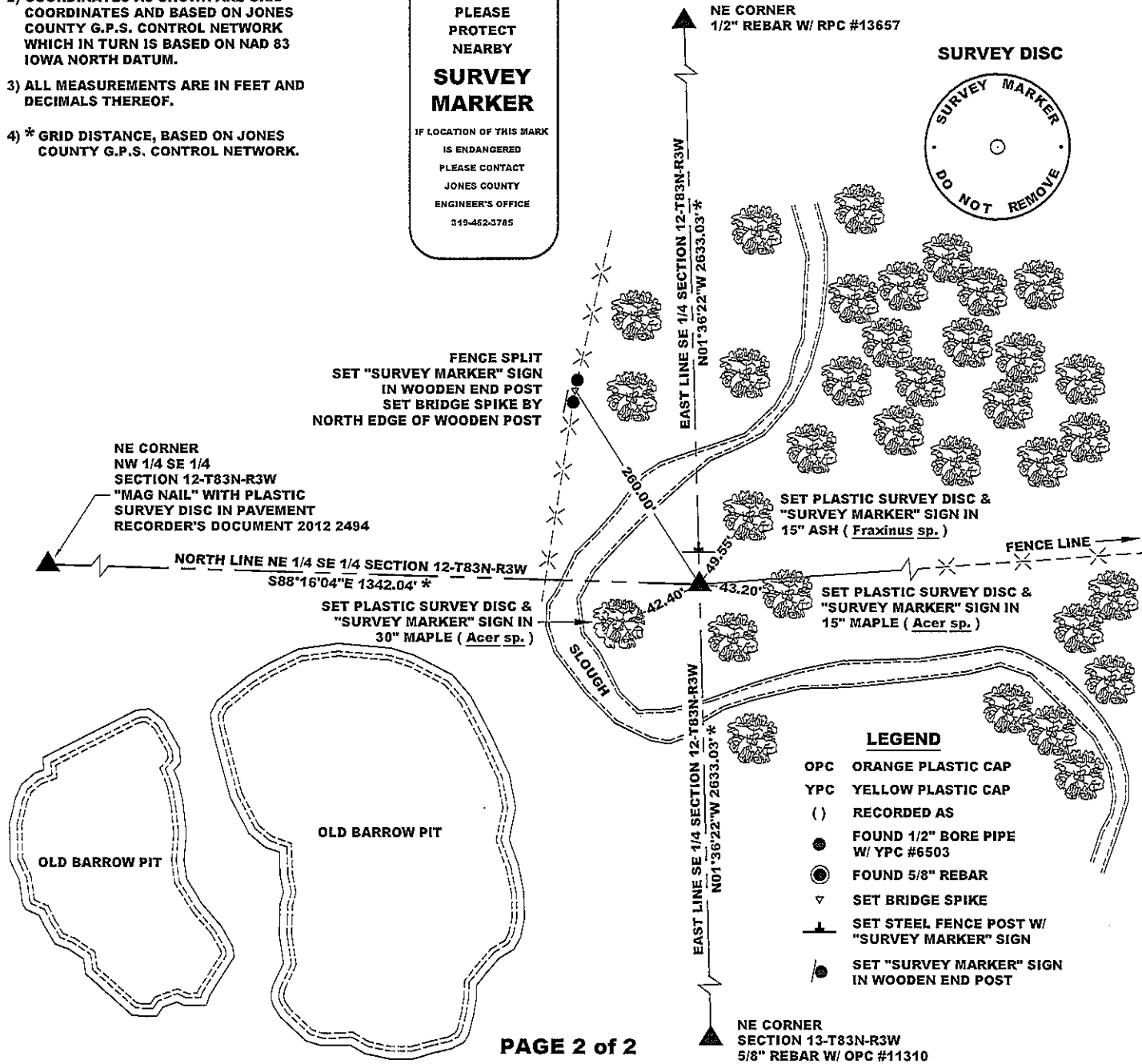


NOTES:

- 1) THE STATE PLANE COORDINATES AS SHOWN ARE FOR CONVENIENCE ONLY. THE TIES AS SHOWN SHOULD BE USED TO REPLACE THE CORNER, IF DESTROYED.
- 2) COORDINATES AS SHOWN ARE GRID COORDINATES AND BASED ON JONES COUNTY G.P.S. CONTROL NETWORK WHICH IN TURN IS BASED ON NAD 83 IOWA NORTH DATUM.
- 3) ALL MEASUREMENTS ARE IN FEET AND DECIMALS THEREOF.
- 4) * GRID DISTANCE, BASED ON JONES COUNTY G.P.S. CONTROL NETWORK.

"SURVEY MARKER" SIGN

PLEASE PROTECT NEARBY
SURVEY MARKER
 IF LOCATION OF THIS MARK IS ENDANGERED PLEASE CONTACT JONES COUNTY ENGINEER'S OFFICE 319-462-3785

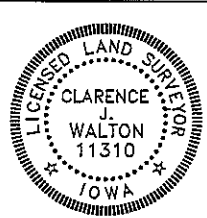


PAGE 2 of 2

PREVIOUSLY RECORDED IN N/A

MONUMENT DESCRIPTION AND HOW ESTABLISHED SET 5/8" X 24" REBAR WITH ORANGE PLASTIC CAP # 11310 FLUSH WITH CURRENT GROUND SURFACE AT INTERSECTION OF FENCE LINE EAST EXTENDED WESTERLY TO THE EAST LINE OF SECTION 12-T83N-R3W. SET STEEL FENCE POST WITH "SURVEY MARKER" SIGN 0.2' NORTH OF CORNER. THERE IS A CALL IN THE ORIGINAL GOVERNMENT SURVEY FIELD NOTES THAT THIS CORNER WAS 13.37 CHAINS (± 882.42') NORTH OF THE RIGHT BANK OF THE WAPSIPINICON RIVER. SCALED DISTANCE USING LOW FLIGHT AERIAL IMAGERY OVERLAID IN THE COMPUTER DRAWING OF THE SURVEY WE PERFORMED AGREES WELL WITH A SLOUGH THAT COULD WELL HAVE BEEN THE OUTSIDE BEND OF THE WAPSIPINICON AS IT WAS WAS DURING THE ORIGINAL SURVEY (1836). I DID NOT RELY ON THIS TO SET THIS CORNER, BUT IT SEEMS TO SUPPORT THE POSITION OF THIS CORNER'S PLACEMENT. (THE OUTSIDE BEND REFERRED TO IS NOT THE ONE SHOWN IN THE ABOVE SKETCH).

DATE OF SURVEY: 10/11/12 FIELD BOOK: #381. PAGE 70.



I hereby certify that this land surveying document and the related survey work was performed by me or under my direct personal supervision and that I am a duly registered Land Surveyor under the laws of the State of Iowa.
 Signed: *Clarence J. Walton* 10/24/12
 Clarence J. Walton, L.S.
 My Registration Renewal Date is December 31, 2013
 Iowa License Number 11310
 Pages or sheets covered by this seal: 2 of 2.

- A. THERE IS NO CERTIFICATE FOR THE CORNER ON FILE WITH THE RECORDER OF THE COUNTY IN WHICH THE CORNER IS LOCATED.
- B. THE CORNER MONUMENT HAS BEEN REPLACED OR MODIFIED.
- C. THE SURVEYOR IN RESPONSIBLE CHARGE OF THE LAND SURVEYING ACCEPTS A CORNER POSITION THAT DIFFERS FROM THAT SHOWN IN THE PUBLIC RECORDS OF THE COUNTY IN WHICH THE CORNER IS LOCATED.
- D. THE REFERENCE TIES REFERRED TO IN AN EXISTING PUBLIC RECORD NO LONGER EXIST.

CORNERS TO BE INDEXED

CORNER	SECTION	TOWNSHIP	RANGE
E 1/4 CORNER	12	83N	3W
W 1/4 CORNER	7	83N	2W

JONES COUNTY ENGINEER'S OFFICE



19501 HWY. 64, ANAMOSA, IOWA 52205
 (319) 462-3785