

COPY

Jones County Marie Krutzfield Recorder
Fee Book 2012 3089
10/24/2012 @0308PM # Pages 2
ZSC SEC COR CERT
Total Fees: \$0.00

PREPARED BY
CLARENCE J. WALTON, JONES COUNTY ENGINEER'S OFFICE, 19501 HWY. 64, ANAMOSA, IOWA, 52205 (319) 462-3785

UNITED STATES PUBLIC LAND SURVEY CORNER CERTIFICATE

LAND SURVEY MONUMENTS SITUATED IN SECTION 13, TOWNSHIP 83 NORTH,
RANGE 3 WEST OF THE 5TH PRINCIPAL MERIDIAN, JONES COUNTY, IOWA.

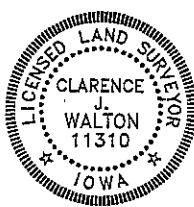
SURVEYOR'S NARRATIVE REGARDING THE E 1/4 CORNER OF SECTION 13-T83N-R3W

AS SHOWN, THE SE-LY EDGE OF WALNUT CREEK IS NEAR TO WHERE THE GOVERNMENT FIELD NOTES LOCATED IT. FLORI BRUMMER FILED A "SURVEY TO DETERMINE THE PROXIMITY OF AN EXISTING FENCE LINE AND BOUNDARY OF LAND SPECIFICALLY DESCRIBED AS FOLLOWS:" (REFER TO PLAT BOOK L, PAGE 59 OR RECORDER'S DOCUMENT 2003 1561. BY RETRACING HIS SURVEY FROM FOUND PINS AT THE REMAINING 3 CORNERS OF HIS SURVEY, THE PLATTED LOCATION OF THE E 1/4 CORNER OF SAID SECTION 13 WAS COMPUTED, THE POSITION OF WHICH VERY CLOSELY MATCHES THE GOVERNMENT NOTES, ESPECIALLY IN REGARD TO ITS DISTANCE FROM THE SOUTHERLY BANK ON WALNUT CREEK. A 1/2" BORE PIPE WITH A YELLOW CAP #6303 WAS FOUND 30.28 FEET NORTH OF THE COMPUTED LOCATION AND 6.70 FEET EAST OF THE EAST LINE OF THE NE 1/4 OF SAID SECTION 13 BY REFERENCING A PLAT OF SURVEY - RETRACEMENT FILED IN RECORDER'S DOCUMENT 2009-1028. I WAS NOT COMFORTABLE WITH THIS. A SURVEY DONE BY D.L. BLAKESLEE DECEMBER 9TH & 10TH, 1876, RECORDED ON PAGE 54 IN THE RED SURVEYOR'S RECORD BOOK IN THE JONES COUNTY, IOWA RECORDER'S OFFICE. STATES THAT A STONE WAS SET FOR THIS CORNER. PROBING WHERE BRUMMER'S PLATTED POSITION SHOULD HAVE BEEN REVEALED AN 8" X 7" X 4" LIMESTONE 3" DEEP 1.93' EAST OF SAID PLATTED POSITION.

FURTHERMORE, 1930'S AERIAL PHOTO SHOWS AN WALNUT CREEK VIRTUALLY IN THE SAME LOCATION AS IT IS TODAY. BY THE APPEARANCE OF THE CREEK BED, IT SEEMS THAT THE CREEK HAS INDEED NOT MOVED APPRECIABLY.

I ACCEPTED THE STONE AS BEING THE E 1/4 CORNER OF SAID SECTION 13 AS SET BY BLAKESLEE.

PAGE 1 of 2



I hereby certify that this land surveying document and the related survey work was performed by me or under my direct personal supervision and that I am a duly registered Land Surveyor under the laws of the State of Iowa.

Signed: *Clarence J. Walton* 10/24/12
Clarence J. Walton, L.S.
My Registration Renewal Date is December 31, 2013
Iowa License Number 11310
Pages or sheets covered by this seal: 1 of 2.

- A. THERE IS NO CERTIFICATE FOR THE CORNER ON FILE WITH THE RECORDER OF THE COUNTY IN WHICH THE CORNER IS LOCATED.
- B. THE CORNER MONUMENT HAS BEEN REPLACED OR MODIFIED.
- C. THE SURVEYOR IN RESPONSIBLE CHARGE OF THE LAND SURVEYING ACCEPTS A CORNER POSITION THAT DIFFERS FROM THAT SHOWN IN THE PUBLIC RECORDS OF THE COUNTY IN WHICH THE CORNER IS LOCATED.
- D. THE REFERENCE TIES REFERRED TO IN AN EXISTING PUBLIC RECORD NO LONGER EXIST.

CORNERS TO BE INDEXED

CORNER	SECTION	TOWNSHIP	RANGE
E 1/4 CORNER	13	83N	3W
W 1/4 CORNER	18	83N	2W

JONES COUNTY ENGINEER'S OFFICE



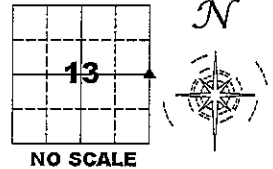
19501 HWY. 64, ANAMOSA, IOWA 52205
(319) 462-3785

UNITED STATES PUBLIC LAND SURVEY CORNER CERTIFICATE

LAND SURVEY MONUMENTS SITUATED IN SECTION 13, TOWNSHIP 83 NORTH,
 RANGE 3 WEST OF THE 5TH PRINCIPAL MERIDIAN, JONES COUNTY, IOWA.

STATE PLANE COORDINATE
 NAD 83 IOWA NORTH
 N: 3471146.55
 E: 5564912.24

CORNER SECTION TOWNSHIP RANGE
 E 1/4 CORNER 13 83N 3W

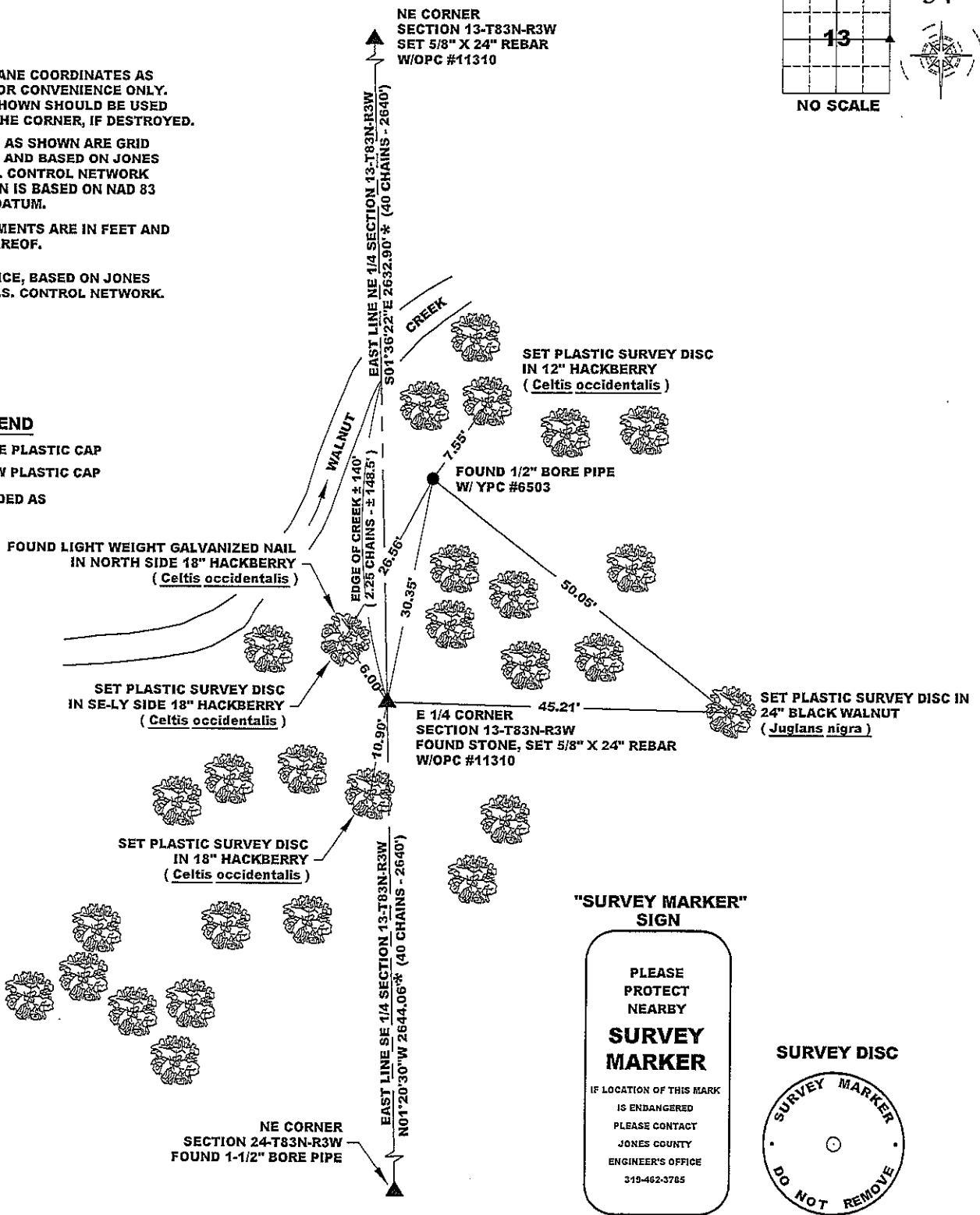


NOTES:

- 1) THE STATE PLANE COORDINATES AS SHOWN ARE FOR CONVENIENCE ONLY. THE TIES AS SHOWN SHOULD BE USED TO REPLACE THE CORNER, IF DESTROYED.
- 2) COORDINATES AS SHOWN ARE GRID COORDINATES AND BASED ON JONES COUNTY G.P.S. CONTROL NETWORK WHICH IN TURN IS BASED ON NAD 83 IOWA NORTH DATUM.
- 3) ALL MEASUREMENTS ARE IN FEET AND DECIMALS THEREOF.
- 4) * GRID DISTANCE, BASED ON JONES COUNTY G.P.S. CONTROL NETWORK.

LEGEND

- OPC ORANGE PLASTIC CAP
- YPC YELLOW PLASTIC CAP
- () RECORDED AS



PAGE 2 of 2

PREVIOUSLY RECORDED IN N/A

MONUMENT DESCRIPTION AND HOW ESTABLISHED FOUND 1/2" BORE PIPE WITH YELLOW PLASTIC CAP # 6503 PER PLAT OF SURVEY RECORDED IN RECORDER'S DOCUMENTS 2009 1028 AND 2003 1561. FOUND STONE, SET 5/8" REBAR WITH ORANGE PLASTIC CAP #11310 BESIDE STONE. SET STEEL FENCE POST WITH "SURVEY MARKER" SIGN 0.3' NORTH OF 1/2" BORE PIPE AND SET SAME SOUTH OF STONE/REBAR AS WITNESSES TO MONUMENTS. PLEASE REFER TO PAGE 1 OF 2 FOR MORE INFORMATION.

DATE OF SURVEY: 9/12/12 & 10/16/12 FIELD BOOK: #381, PAGES 74, 68 RESPECTIVELY



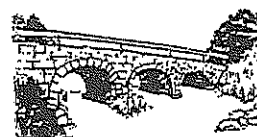
I hereby certify that this land surveying document and the related survey work was performed by me or under my direct personal supervision and that I am a duly registered Land Surveyor under the laws of the State of Iowa.
 Signed: *Clarence J. Walton* 10/24/12
 Clarence J. Walton, L.S.
 My Registration Renewal Date is December 31, 2013
 Iowa License Number 11310
 Pages or sheets covered by this seal: 2 of 2.

- A. THERE IS NO CERTIFICATE FOR THE CORNER ON FILE WITH THE RECORDER OF THE COUNTY IN WHICH THE CORNER IS LOCATED.
- B. THE CORNER MONUMENT HAS BEEN REPLACED OR MODIFIED.
- C. THE SURVEYOR IN RESPONSIBLE CHARGE OF THE LAND SURVEYING ACCEPTS A CORNER POSITION THAT DIFFERS FROM THAT SHOWN IN THE PUBLIC RECORDS OF THE COUNTY IN WHICH THE CORNER IS LOCATED.
- D. THE REFERENCE TIES REFERRED TO IN AN EXISTING PUBLIC RECORD NO LONGER EXIST.

CORNERS TO BE INDEXED

CORNER	SECTION	TOWNSHIP	RANGE
E 1/4 CORNER	13	83N	3W
W 1/4 CORNER	18	83N	2W

JONES COUNTY ENGINEER'S OFFICE



19501 HWY. 64, ANAMOSA, IOWA 52205
 (319) 462-3785