

Instrument #: 2018-3253
 12/03/2018 10:02:53 AM Total Pages: 1
 ZSC SECTION CORNER CERTIFICATE
 Recording Fee: \$7.00 Transfer Tax: \$0
 Sheri L. Jones, Recorder, Jones County Iowa



RETURN TO &
 PREPARED BY: LEO P. BONIFAZI SCHNOOR-BONIFAZI ENGINEERING & SURVEYING LC, 431 FIFTH AVENUE SW, CEDAR RAPIDS, IA 52404 319-298-8888

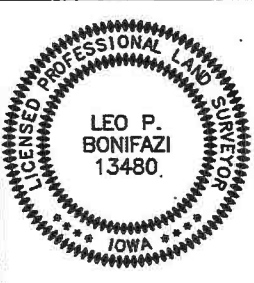
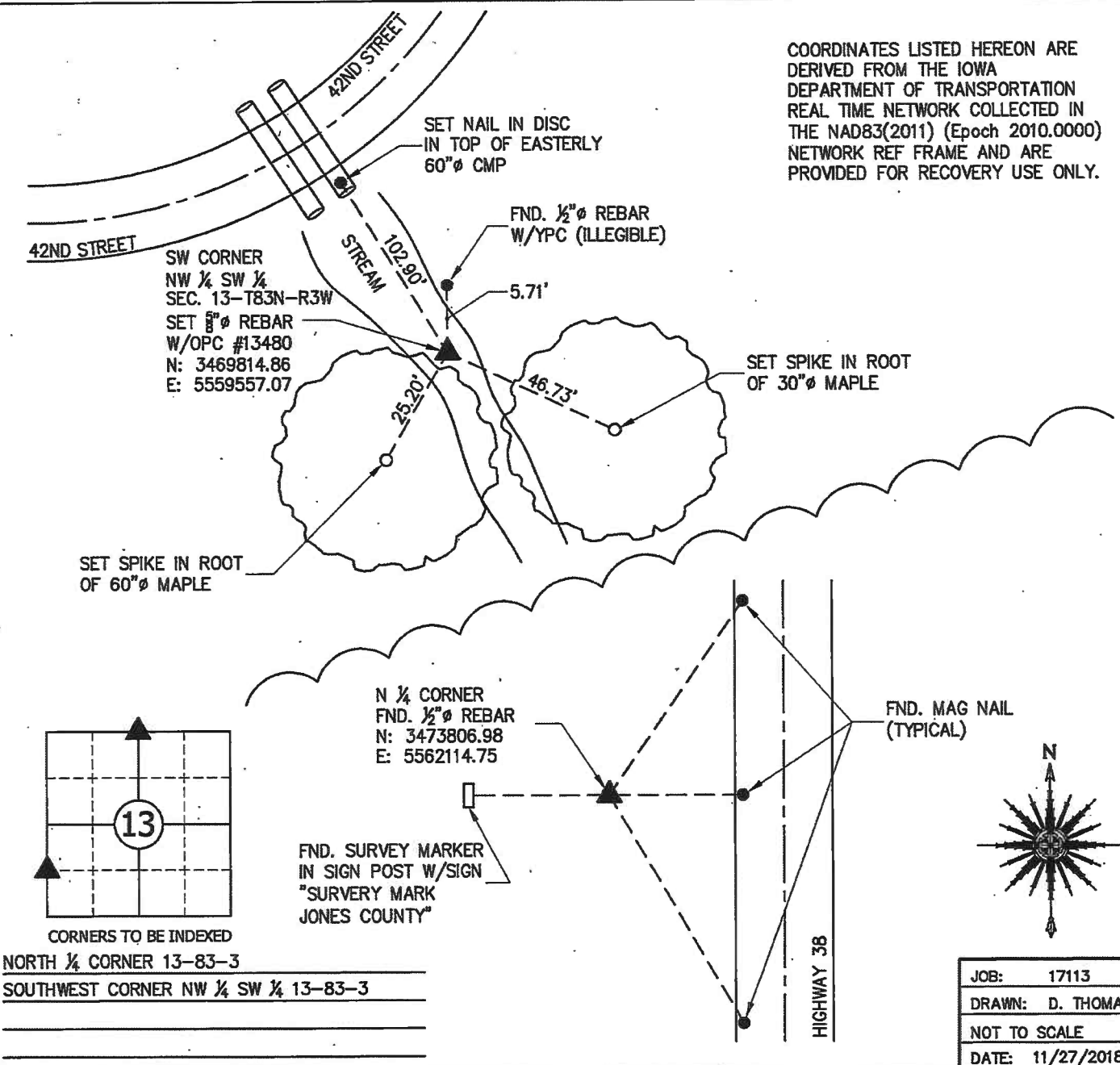
UNITED STATES PUBLIC LAND SURVEY CORNER CERTIFICATE

Land Survey Monuments Situated in Section 13, Township 83 North, Range 3 West of the Fifth Principal Meridian, JONES County, Iowa.

Reason for filing: a. No certificate of record found. b. Monument or ties found differ from record. c. Replaced section corner.

NORTH QUARTER CORNER - FOUND 1/2" REBAR USING CORNER CERTIFICATE RECORDED IN BOOK 356, PAGE 141. ALL TIES MISSING FROM PREVIOUS CERTIFICATE. FOUND OTHER REFERENCE MONUMENTS BUT FOUND NO UPDATED CORNER CERTIFICATE. TIED OUT AS SHOWN BELOW.

SOUTHWEST CORNER NW 1/4 SW 1/4 - MONUMENT HAS BEEN WASHED OUT AS IT FALLS IN A STREAM. RESET MONUMENT WITH A 5/8" REBAR WITH AN ORANGE PLASTIC CAP EMBOSSED "BONIFAZI PLS 13480" USING DISTANCES FROM A PLAT OF SURVEY RECORDED IN BOOK 2002, PAGE 3454. ALL PREVIOUS TIES MISSING, SET NEW TIES AS SHOWN BELOW.



I HEREBY CERTIFY THAT THIS LAND SURVEYING DOCUMENT WAS PREPARED AND THE RELATED SURVEY WORK WAS PERFORMED BY ME OR UNDER MY DIRECT PERSONAL SUPERVISION AND THAT I AM A DULY LICENSED PROFESSIONAL LAND SURVEYOR UNDER THE LAWS OF THE STATE OF IOWA.

SIGNATURE: *Leo P. Bonifazi* DATE: 11/27/2018
 LEO P. BONIFAZI
 LICENSE NO. 13480
 SHEETS COVERED BY THIS SEAL: THIS SHEET ONLY
 MY LICENSE RENEWAL DATE IS DECEMBER 31, 2019

SCHNOOR-BONIFAZI ENGINEERING & SURVEYING, LC
 431 FIFTH AVENUE SW
 CEDAR RAPIDS, IA 52404
 (319) 298-8888 (PHONE)
 s-b-engineering.com

Schnoor Bonifazi
 Engineering & Surveying

JOB: 17113
 DRAWN: D. THOMA
 NOT TO SCALE
 DATE: 11/27/2018

UNITED STATES PUBLIC LAND SURVEY CORNER CERTIFICATE

OF

and Survey Monuments situated in Section 13, Township 83, Range 03, of the Fifth Principal Meridian, JONES County, Iowa, previously recorded in _____ in County Recorder's Office.

(book, page, document number, etc.)

Now reason for preparing this certificate, the evidence and detailed procedures used in establishing the corner positions and monuments found or placed.)

Monument Description and Remarks: THESE CORNERS WERE USED IN A SURVEY FOR THE CITY OF OLIN, W.O. # 193017, AUGUST 13, 1993
FIELD BOOK 196 PAGE 16

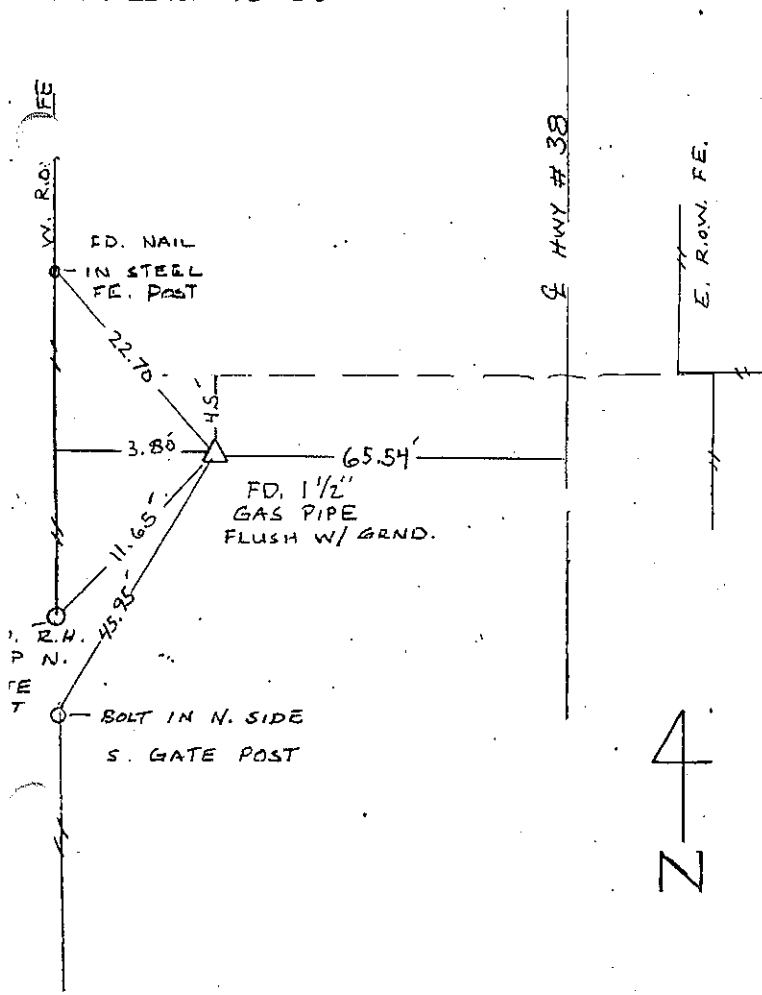
D. WOODER P.C.

D. ACKERMAN REC.

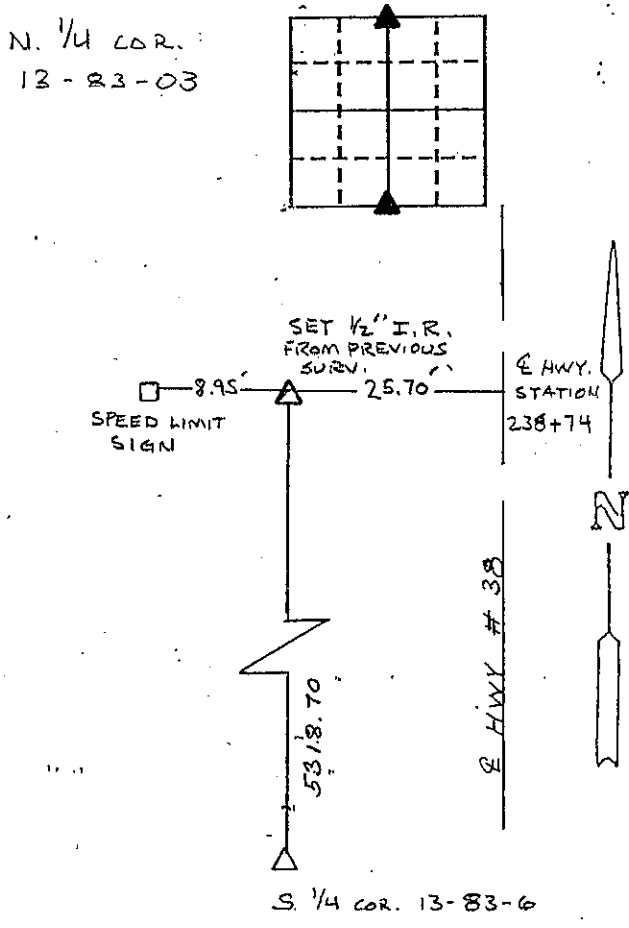
PLAN - VIEW

Show a minimum of three reference ties to durable physical objects, relevant monuments and physical conditions that will enable recovery of the corner.)

S. 1/4 COR. 13-83-03



N. 1/4 COR. 13-83-03



I hereby certify that the survey work was completed and this certificate as prepared by me or under my direct personal supervision and that I am a duly registered land surveyor under the laws of the state of Iowa.

Signature: Donald A. Thomas
Name typed or printed:
Date: 8-13-93 Reg. No. 6019



Corners	Section	Twp	Range
S. 1/4	13	83	03
N. 1/4	13	83	03

FILED
RECORDERS OFFICE
JONES COUNTY IOWA
94 MAR 31 AM 10:33
BOOK 356 PAGE 141
LINDA J. DENHAGEN
RECORDER 6.00

EAL