

COPY

Jones County Marie Krutzfield Recorder
 Fee Book 2012 3088
 10/24/2012 @0306PM # Pages 2
 ZSC SEC COR CERT
 Total Fees: \$0.00

PREPARED BY
 CLARENCE J. WALTON, JONES COUNTY ENGINEER'S OFFICE, 19501 HWY. 64, ANAMOSA, IOWA, 52205 (319) 462-3785

UNITED STATES PUBLIC LAND
 SURVEY CORNER CERTIFICATE

LAND SURVEY MONUMENTS SITUATED IN SECTION 13, TOWNSHIP 83 NORTH,
 RANGE 3 WEST OF THE 5TH PRINCIPAL MERIDIAN, JONES COUNTY, IOWA.

SURVEYOR'S NARRATIVE
 REGARDING
 THE NE CORNER
 OF
 SECTION 13-T83N-R3W

SET 5/8" X 24" REBAR WITH ORANGE PLASTIC CAP # 11310 FLUSH WITH CURRENT GROUND SURFACE. SET STEEL FENCE POST WITH "SURVEY MARKER" SIGN AS WITNESS TO THIS CORNER. CORNER WAS SET USING ORIGINAL GOVERNMENT SURVEY FIELD NOTE CALLS COUPLED WITH EXISTING EVIDENCE:

AN EXISTING FENCE LINE WAS FOUND RUNNING FROM THE N 1/4 CORNER OF SECTION 18-T83N-R2W TO THE WEST, AS WAS ALSO FOUND A 1/2" REBAR (REFER TO SURVEY IN BOOK F, PAGE 123. THE FENCE LINE WAS EXTENDED TO THE EAST LINE OF THE NE 1/4 OF SAID SECTION 13.

AS SHOWN THE SE-LY EDGE OF WALNUT CREEK IS NEAR TO WHERE THE GOVERNMENT FIELD NOTES LOCATED IT. FLORI BRUMMER FILED A "SURVEY TO DETERMINE THE PROXIMITY OF AN EXISTING FENCE LINE AND BOUNDARY OF LAND SPECIFICALLY DESCRIBED AS FOLLOWS:" (REFER TO PLAT BOOK L, PAGE 59 OR RECORDER'S DOCUMENT 2003 1561. BY RETRACING HIS SURVEY FROM FOUND PINS AT THE REMAINING 3 CORNERS OF HIS SURVEY, THE PLATTED LOCATION OF THE E 1/4 CORNER OF SAID SECTION 13 WAS COMPUTED, THE POSITION OF WHICH VERY CLOSELY MATCHES THE GOVERNMENT NOTES, ESPECIALLY IN REGARD TO ITS DISTANCE FROM THE SOUTHERLY BANK ON WALNUT CREEK. A 1/2" BORE PIPE WITH A YELLOW CAP #6303 WAS FOUND 30.28 FEET NORTH OF THE COMPUTED LOCATION AND 6.70 FEET EAST OF THE EAST LINE OF THE NE 1/4 OF SAID SECTION 13 BY REFERENCING A PLAT OF SURVEY - RETRACEMENT FILED IN RECORDER'S DOCUMENT 2009-1028. I WAS NOT COMFORTABLE WITH THIS. A SURVEY DONE BY D.L. BLAKESLEE DECEMBER 9TH & 10TH, 1876, RECORDED ON PAGE 54 IN THE RED SURVEYOR'S RECORD BOOK IN THE JONES COUNTY, IOWA RECORDER'S OFFICE, STATES THAT A STONE WAS SET FOR THIS CORNER. PROBING WHERE BRUMMER'S PLATTED POSITION SHOULD HAVE BEEN REVEALED AN 8" X 7" X 4" LIMESTONE 3" DEEP 1.93' EAST OF SAID PLATTED POSITION.

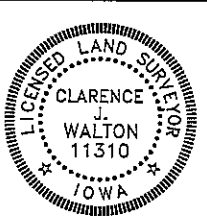
THE DISTANCE FROM THE STONE TO THE INTERSECTION OF THE EXISTING FENCE LINE WITH THE EAST LINE OF SAID NE 1/4 WAS 2632.90 FEET AS COMPARED TO 40 CHAINS (2640') PER THE ORIGINAL FIELD NOTES. OVERALL DISTANCE FROM THE SE CORNER OF SAID SECTION 13 WAS MEASURED AS 5276.95 FEET AS COMPARED WITH 80 CHAINS (5280').

FURTHERMORE, 1930'S AERIAL PHOTO WHICH SHOWS AN EXISTING FENCE LINE FROM THE WEST WHICH IF EXTENDED ACROSS THE RIVER, WOULD INTERSECT WITH SAID EAST LINE WITHIN APPROXIMATELY 4 FEET NORTH OF WHERE THE POSITION I CHOSE SAID NE CORNER TO BE. ALSO, A LINE FROM A FOUND STONE AT THE NW CORNER OF SAID SECTION 13 (SEE RECORDER'S DOCUMENT 2006 3941) ALONG AN EXISTING FENCE LINE RUNNING EAST, IF EXTENDED, INTERSECTS SAID EAST LINE APPROXIMATELY 3 FEET SOUTH OF WHERE POSITION I CHOSE FOR SAID NE CORNER.

WE FOUND A 1/2" REBAR WITH A RED PLASTIC CAP AS REFERENCED IN PLAT BOOK T, PAGE 47 OR IN RECORDER'S DOCUMENT 2009 1028 WHICH FELL 16.97 FEET SSE OF WHERE I ASCERTAINED THE BEST POSITION FOR THIS CORNER TO BE. THE PLAT REFERENCES WHERE BRUMMER'S PIN FELL NORTH OF HIS PLATTED POSITION. THE DISTANCE BETWEEN FOUND PINS WAS 2587.01 FEET WHICH FELL SHORT OF THE GOVERNMENT DISTANCE OF 2640 FEET.

LASTLY, WE RAN THE EAST LINE OF TOWNSHIP 83N-R3W FROM ITS SE CORNER TO ITS NE CORNER AND COMPARED THE PRORATED DISTANCES WITH FOUND CORNERS AND CORNERS ESTABLISHED BY EXISTING EVIDENCE AND FOUND A VERY CLOSE CORRELATION (3' NORTH AT SAID NE CORNER, WHAT I WOULD EXPECT OF WILLIAM BURT'S CREWS.

PAGE 1 of 2



I hereby certify that this land surveying document and the related survey work was performed by me or under my direct personal supervision and that I am a duly registered Land Surveyor under the laws of the State of Iowa.

Signed: *Clarence J. Walton* 10/24/12
 Clarence J. Walton, L.S.
 My Registration/Renewal Date is December 31, 2013
 Iowa License Number 11310
 Pages or sheets covered by this seal: 1 of 2.

- A. THERE IS NO CERTIFICATE FOR THE CORNER ON FILE WITH THE RECORDER OF THE COUNTY IN WHICH THE CORNER IS LOCATED.
- B. THE CORNER MONUMENT HAS BEEN REPLACED OR MODIFIED.
- C. THE SURVEYOR IN RESPONSIBLE CHARGE OF THE LAND SURVEYING ACCEPTS A CORNER POSITION THAT DIFFERS FROM THAT SHOWN IN IN THE PUBLIC RECORDS OF THE COUNTY IN WHICH THE CORNER IS LOCATED.
- D. THE REFERENCE TIES REFERRED TO IN AN EXISTING PUBLIC RECORD NO LONGER EXIST.

CORNERS TO BE INDEXED

CORNER	SECTION	TOWNSHIP	RANGE
NE CORNER	13	83N	3W
SE CORNER	12	83N	3W
SW CORNER	7	83N	2W
NW CORNER	18	83N	2W

JONES COUNTY ENGINEER'S OFFICE



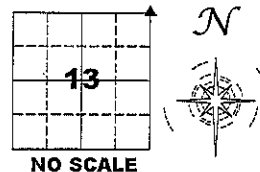
19501 HWY. 64, ANAMOSA, IOWA 52205
 (319) 462-3785

UNITED STATES PUBLIC LAND SURVEY CORNER CERTIFICATE

**LAND SURVEY MONUMENTS SITUATED IN SECTION 13, TOWNSHIP 83 NORTH,
 RANGE 3 WEST OF THE 5TH PRINCIPAL MERIDIAN, JONES COUNTY, IOWA.**

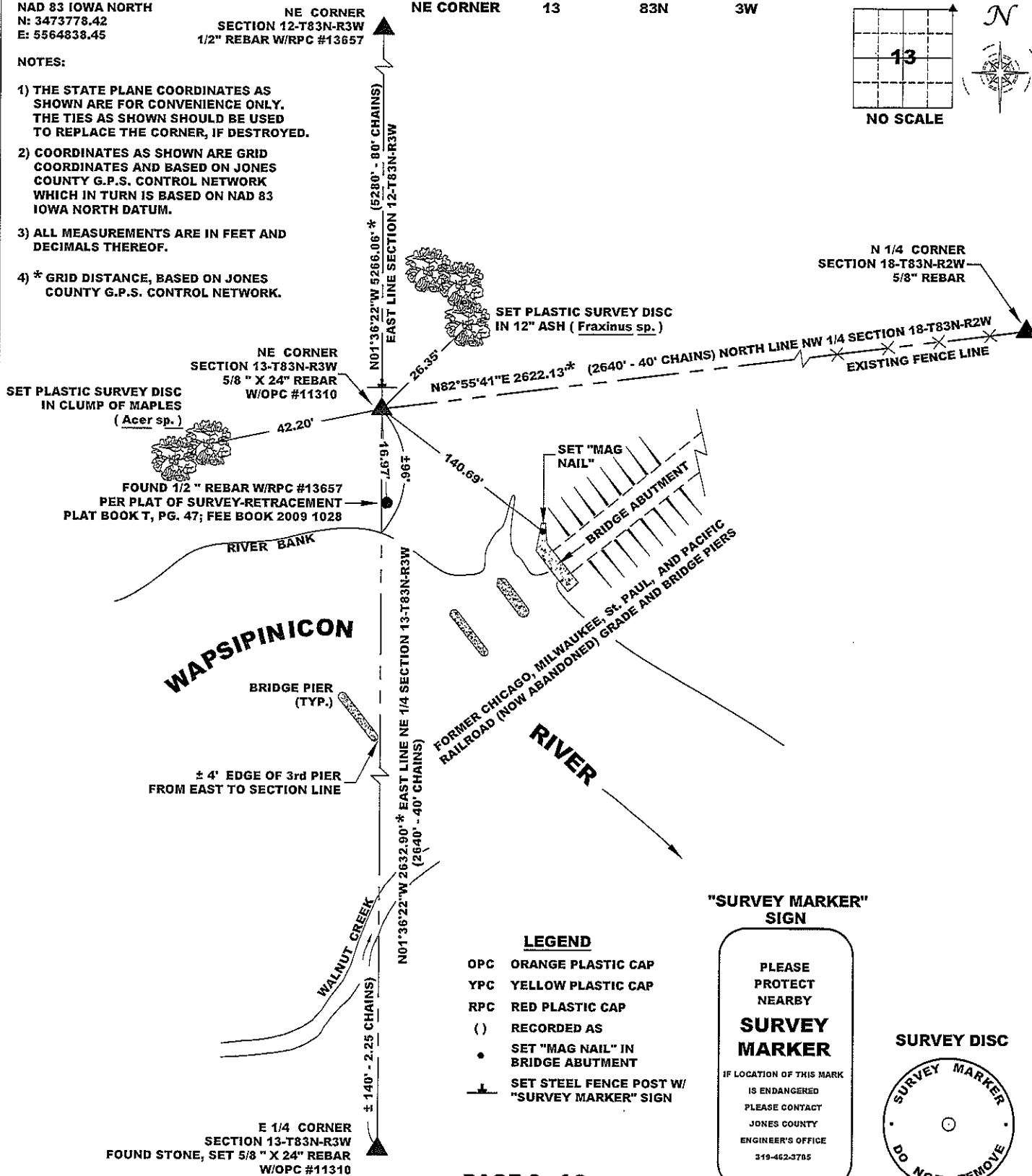
STATE PLANE COORDINATE
 NAD 83 IOWA NORTH
 N: 3473778.42
 E: 5564838.45

CORNER SECTION TOWNSHIP RANGE
 NE CORNER 13 83N 3W



NOTES:

- 1) THE STATE PLANE COORDINATES AS SHOWN ARE FOR CONVENIENCE ONLY. THE TIES AS SHOWN SHOULD BE USED TO REPLACE THE CORNER, IF DESTROYED.
- 2) COORDINATES AS SHOWN ARE GRID COORDINATES AND BASED ON JONES COUNTY G.P.S. CONTROL NETWORK WHICH IN TURN IS BASED ON NAD 83 IOWA NORTH DATUM.
- 3) ALL MEASUREMENTS ARE IN FEET AND DECIMALS THEREOF.
- 4) * GRID DISTANCE, BASED ON JONES COUNTY G.P.S. CONTROL NETWORK.



PAGE 2 of 2

PREVIOUSLY RECORDED IN N/A

MONUMENT DESCRIPTION AND HOW ESTABLISHED (ABSTRACT); SET 5/8" X 24" REBAR WITH ORANGE PLASTIC CAP #11310 FLUSH WITH PRESENT GROUND SURFACE USING ORIGINAL GOVERNMENT SURVEY FIELD NOTES COUPLED WITH FIELD EVIDENCE. PLEASE REFER TO SURVEYOR'S NARRATIVE ON PAGE 1 OF 2 FOR FURTHER INFORMATION.

DATE OF SURVEY: 10/11/2012 FIELD BOOK: #381, PAGE 70



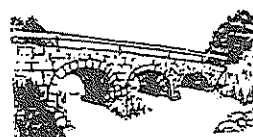
I hereby certify that this land surveying document and the related survey work was performed by me or under my direct personal supervision and that I am a duly registered Land Surveyor under the laws of the State of Iowa.
 Signed: *Clarence J. Walton* 10/24/12
 Clarence J. Walton, L.S.
 My Registration Renewal Date is December 31, 2013
 Iowa License Number 11310
 Pages or sheets covered by this seal: 2 of 2.

- A. THERE IS NO CERTIFICATE FOR THE CORNER ON FILE WITH THE RECORDER OF THE COUNTY IN WHICH THE CORNER IS LOCATED.
- B. THE CORNER MONUMENT HAS BEEN REPLACED OR MODIFIED.
- C. THE SURVEYOR IN RESPONSIBLE CHARGE OF THE LAND SURVEYING ACCEPTS A CORNER POSITION THAT DIFFERS FROM THAT SHOWN IN THE PUBLIC RECORDS OF THE COUNTY IN WHICH THE CORNER IS LOCATED.
- D. THE REFERENCE TIES REFERRED TO IN AN EXISTING PUBLIC RECORD NO LONGER EXIST.

CORNERS TO BE INDEXED

CORNER	SECTION	TOWNSHIP	RANGE
NE CORNER	13	83N	3W
SE CORNER	12	83N	3W
SW CORNER	7	83N	2W
NW CORNER	18	83N	2W

JONES COUNTY ENGINEER'S OFFICE



19501 HWY. 64, ANAMOSA, IOWA 52205
 (319) 462-3785