

Instrument #: 2018-3502  
 12/31/2018 09:16:39 AM Total Pages: 1  
 ZSC SECTION CORNER CERTIFICATE  
 Recording Fee: \$7.00 Transfer Tax: \$0  
 Sheri L. Jones, Recorder, Jones County Iowa



Prepared by & Return to: Herold - Reicks Surveying, 10 East Main Street, New Hampton, IA 50659, Ph. 641-394-2725

## United States Public Land Survey Corner Certificate

Land Survey Monument situated in  
 Section 14, Township 83 North, Range 3 West of the Fifth Principal Meridian, Jones County, Iowa.  
 On file in Document #2012-3134 in the County Recorder's office.

This certificate is being prepared in compliance with Iowa Code Chapter 355.11 because:



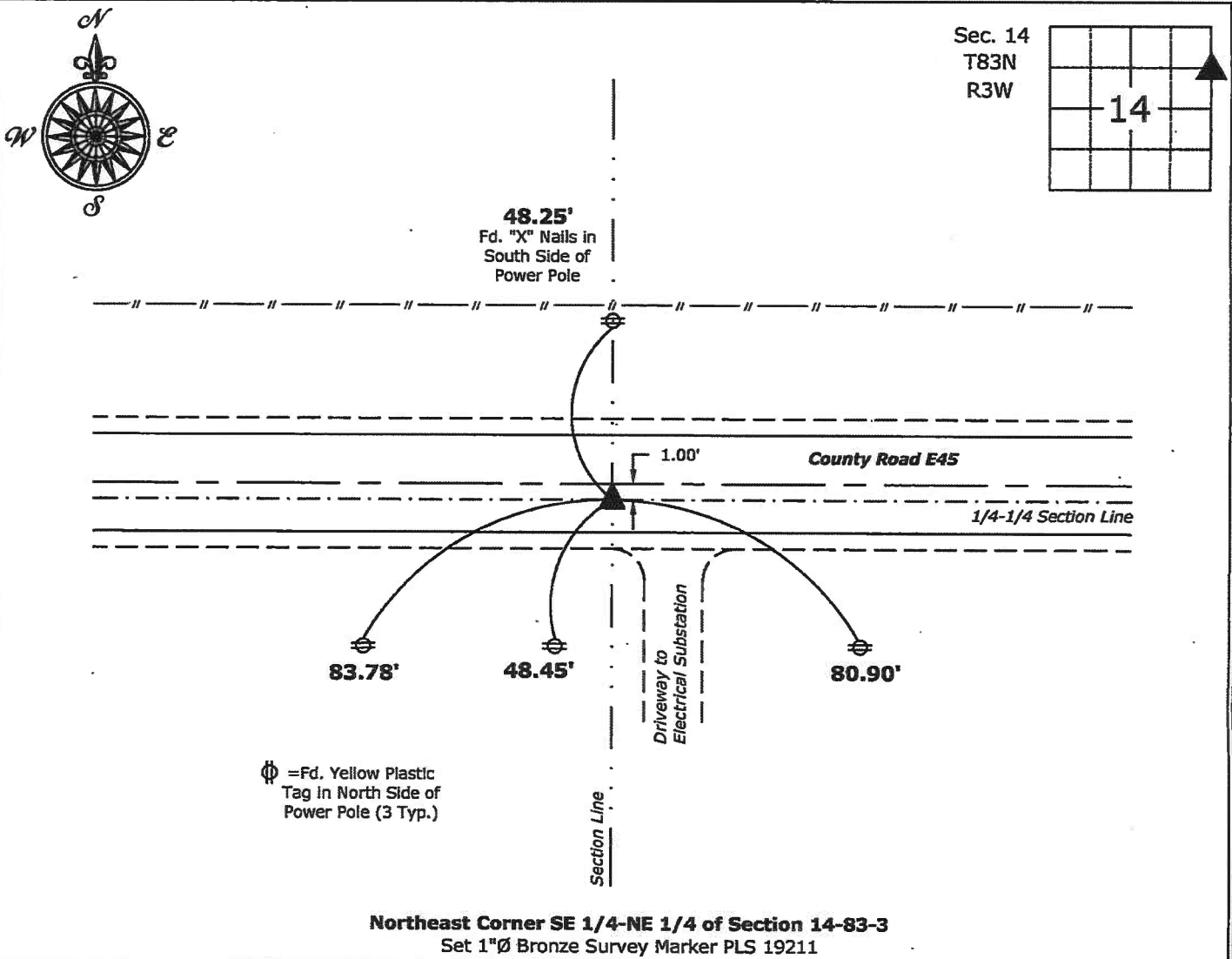
- There is no certificate on file for this corner.
- There are no longer three valid ties of record.
- There are changes to reference ties of record.
- There is change of monumentation of record.
- To clarify description of record monument (ties).

### Monument Description and Remarks:

**Northeast Corner SE 1/4-NE 1/4:** Found Mag-Nail with Cut "X" with information obtained from the previously recorded Section Corner Certificate. Reset with 1"Ø Bronze Survey Marker PLS 19211 with coordinates obtained prior to highway reconstruction. Corner being reset in conjunction with Project No. FM-TSF-CO53(86)--5B-53.

### Plan View

(Show a minimum of three reference ties to durable physical objects, relevant monuments and physical conditions that will enable recovery of the corner.)



I hereby certify that this land surveying document was prepared and the related survey work was performed by me or under my direct personal supervision and that I am a duly licensed Land Surveyor under the laws of the State of Iowa.

*Kirk D. Reicks* 12-27-18  
 Kirk D. Reicks Date:

License number 19211  
 My license renewal date is December 31, 2020.  
 Sheets covered by this seal: Individual sheet only

#### List Corner to be Indexed

Corner	Section	Twp.	Range
NE-SE-NE	14	83	3

Project Number: 2018-828

FB: 2018 Construction, Pgs. 13-15

COPY

Jones County Marie Krutzfield Recorder  
 Fee Book 2012 3134  
 10/29/2012 @0143PM # Pages 1  
 ZSC SEC COR CERT  
 Total Fees: \$0.00

PREPARED BY  
 CLARENCE J. WALTON, JONES COUNTY ENGINEER'S OFFICE, 19501 HWY. 64, ANAMOSA, IOWA, 52205 (319) 462-3785

# UNITED STATES PUBLIC LAND SURVEY CORNER CERTIFICATE

LAND SURVEY MONUMENTS SITUATED IN SECTION 14, TOWNSHIP 83 NORTH,  
 RANGE 3 WEST OF THE 5TH PRINCIPAL MERIDIAN, JONES COUNTY, IOWA.

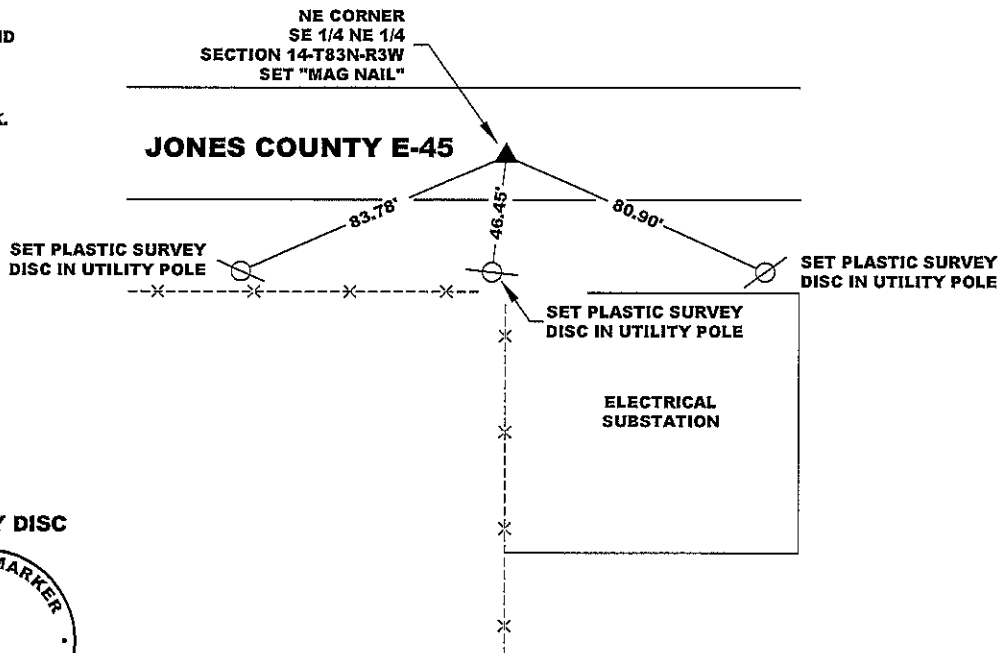
STATE PLANE COORDINATE  
 NAD 83 IOWA NORTH  
 N: 3472463.48  
 E: 5559485.70

CORNER SECTION TOWNSHIP RANGE  
 NE CORNER 14 83N 3W  
 SE 1/4 NE 1/4



NOTES:

- 1) THE STATE PLANE COORDINATES AS SHOWN ARE FOR CONVENIENCE ONLY. THE TIES AS SHOWN SHOULD BE USED TO REPLACE THE CORNER, IF DESTROYED.
- 2) COORDINATES AS SHOWN ARE GRID COORDINATES AND BASED ON JONES COUNTY G.P.S. CONTROL NETWORK WHICH IN TURN IS BASED ON NAD 83 IOWA NORTH DATUM.
- 3) ALL MEASUREMENTS ARE IN FEET AND DECIMALS THEREOF.
- 4) \* GRID DISTANCE, BASED ON JONES COUNTY G.P.S. CONTROL NETWORK.



"SURVEY MARKER" SIGN



SURVEY DISC



LEGEND

- OPC ORANGE PLASTIC CAP
- YPC YELLOW PLASTIC CAP
- ( ) RECORDED AS

PAGE 1 of 1

PREVIOUSLY RECORDED IN RECORDER'S DOCUMENT 2006 3941  
 MONUMENT DESCRIPTION AND HOW ESTABLISHED FOUND "X" CUT IN PAVEMENT PATCH PER TIES RECORDED IN RECORDER'S DOCUMENT 2006 3941.  
 SET "MAG NAIL" IN CENTER OF CUT "X". SET ADDITIONAL TIES IN UTILITY POLES.

DATE OF SURVEY: 10/8/12 FIELD BOOK: #381, PAGE 71



I hereby certify that this land surveying document and the related survey work was performed by me or under my direct personal supervision and that I am a duly registered Land Surveyor under the laws of the State of Iowa.  
 Signed: *Clarence J. Walton* 10/26/12  
 Clarence J. Walton, L.S.  
 My Registration Renewal Date is December 31, 2013  
 Iowa License Number 11310  
 Pages or sheets covered by this seal: 1 of 1.

- A. THERE IS NO CERTIFICATE FOR THE CORNER ON FILE WITH THE RECORDER OF THE COUNTY IN WHICH THE CORNER IS LOCATED.
- B. THE CORNER MONUMENT HAS BEEN REPLACED OR MODIFIED.
- C. THE SURVEYOR IN RESPONSIBLE CHARGE OF THE LAND SURVEYING ACCEPTS A CORNER POSITION THAT DIFFERS FROM THAT SHOWN IN THE PUBLIC RECORDS OF THE COUNTY IN WHICH THE CORNER IS LOCATED.
- D. THE REFERENCE TIES REFERRED TO IN AN EXISTING PUBLIC RECORD NO LONGER EXIST.

CORNERS TO BE INDEXED

CORNER	SECTION	TOWNSHIP	RANGE
NE CORNER SE 1/4 NE 1/4	14	83N	3W
SE CORNER NE 1/4 NE 1/4	14	83N	3W
SW CORNER NW 1/4 NW 1/4	13	83N	3W
NW CORNER SW 1/4 NW 1/4	13	83N	3W

JONES COUNTY ENGINEER'S OFFICE



19501 HWY. 64, ANAMOSA, IOWA 52205  
 (319) 462-3785

Marie Krutzfield, Recorder  
 Jones County, Iowa

PREPARED BY: LEO P. BONIFAZI SCHNOOR-BONIFAZI ENGINEERING & SURVEYING, LC 320, 11TH AVE SE, STE 123 CEDAR RAPIDS, IA 52401 319-298-8888

UNITED STATES PUBLIC LAND SURVEY CORNER CERTIFICATE

Land Survey Monuments Situated in Section 13, Township 83 North, Range 3 W of the Fifth Principal Meridian, JONES County, Iowa. Reason for filing NO CERTIFICATE ON FILE

NW CORNER 13-83-3 FOUND "X" NAILS IN FENCELINE W/ RIBBON TIED TO WIRE AT APPROX MID POINT. DUG, PROBED & USED MAGNETIC LOCATOR ALONG FENCE. FOUND TWO PIECES OF LIMESTONE APPROX 10" TRIANGULAR SECTIONS. NO OTHER MONUMENTS FOUND. CENTERED 5/8" X 30" REBAR BETWEEN STONES.

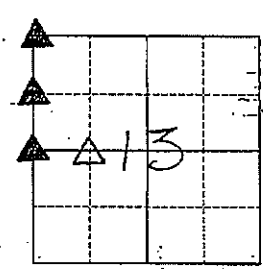
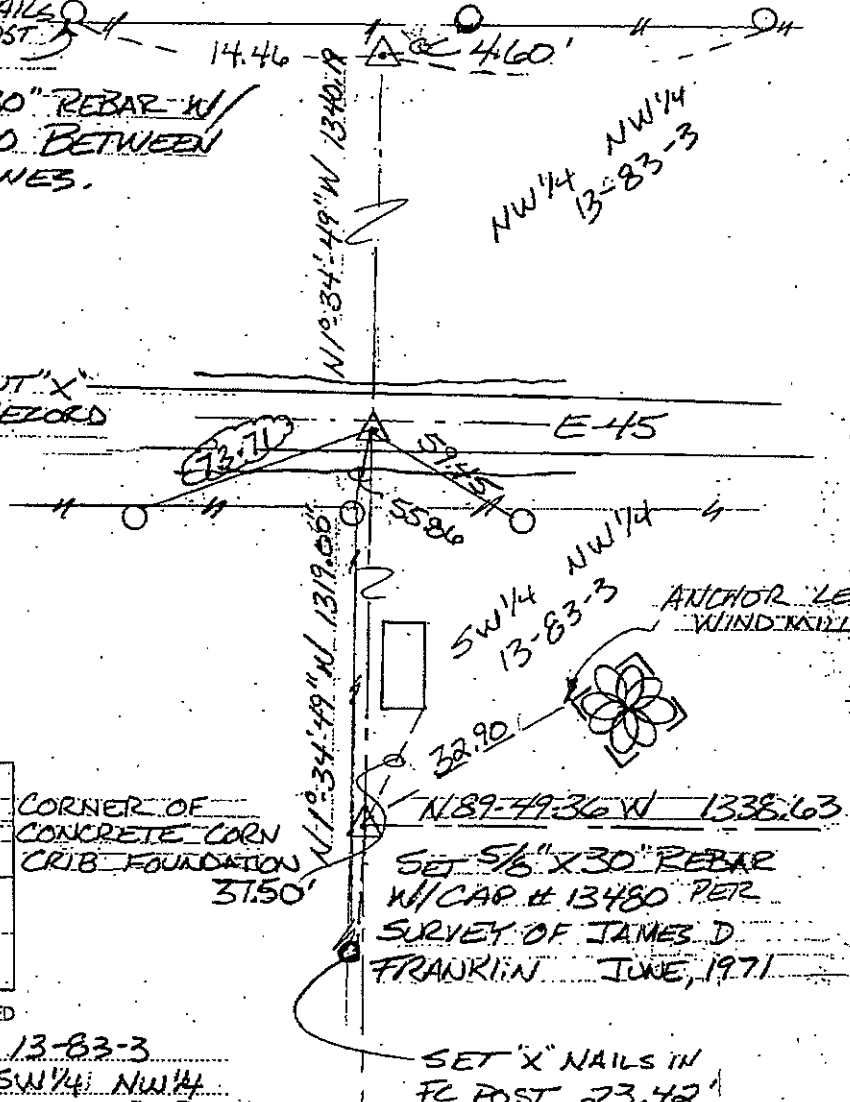
NW CORNER SW 1/4 NW 1/4 13-83-3 CUT X HAS BEEN REMOVED BY CONCRETE PAVEMENT PATCH. REPLACED USING TIES IN BOOK 5000-2962 DIST. 71.37 CORRECTED TO BE 73.71 TO FIT REMAINING TIES.

NW 1/4 CORNER 13-83-3 SET 5/8" X 30" REBAR W/CAP # 13480 BY EXTENDING WEST LINE NW 1/4 NW 1/4 SOUTH AT PLATTED DISTANCE. BEARING OF E-45 P.O.W. EXTENDED WEST FROM SE COR SW 1/4 NW 1/4 AGREES W/ SURVEY OF JAMES D. FRANKLIN JUNE, 1971.

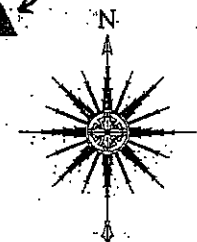
FOUND "X" NAILS IN FENCE POST TYP.

SET 5/8" X 30" REBAR W/CAP # 13480 BETWEEN TWO STONES.

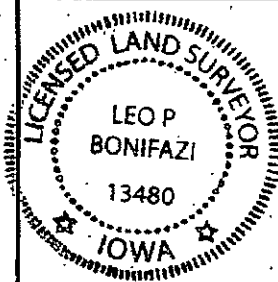
RESET CUT "X" PER TIE RECORD 5000-2962



NW CORNER 13-83-3  
 NW CORNER SW 1/4 NW 1/4  
 W 1/4 CORNER 13-83-3



DRAWN: LPB  
 NOT TO SCALE  
 DATE: 10-19-06



I HEREBY CERTIFY THAT THIS LAND SURVEYING DOCUMENT WAS PREPARED AND THE RELATED SURVEY WORK WAS PERFORMED BY ME OR UNDER MY DIRECT PERSONAL SUPERVISION AND THAT I AM A DULY LICENSED LAND SURVEYOR UNDER THE LAWS OF THE STATE OF IOWA

SIGNATURE: *[Signature]* DATE: 10-19-06  
 LEO P. BONIFAZI  
 LICENSE NO. 13480  
 SHEETS COVERED BY THIS SEAL: THIS SHEET ONLY  
 MY LICENSE RENEWAL DATE IS DECEMBER 31, 2007

SCHNOOR-BONIFAZI ENGINEERING & SURVEYING, LC  
 320 11TH AVENUE SE, STE. 123 CEDAR RAPIDS, IA 52401  
 (319) 298-8888 (PHONE)  
 (319) 298-8889 (FAX)  
 s-b-engineering.com



2000 2962

FILED  
RECORDERS OFFICE  
JONES COUNTY IOWA

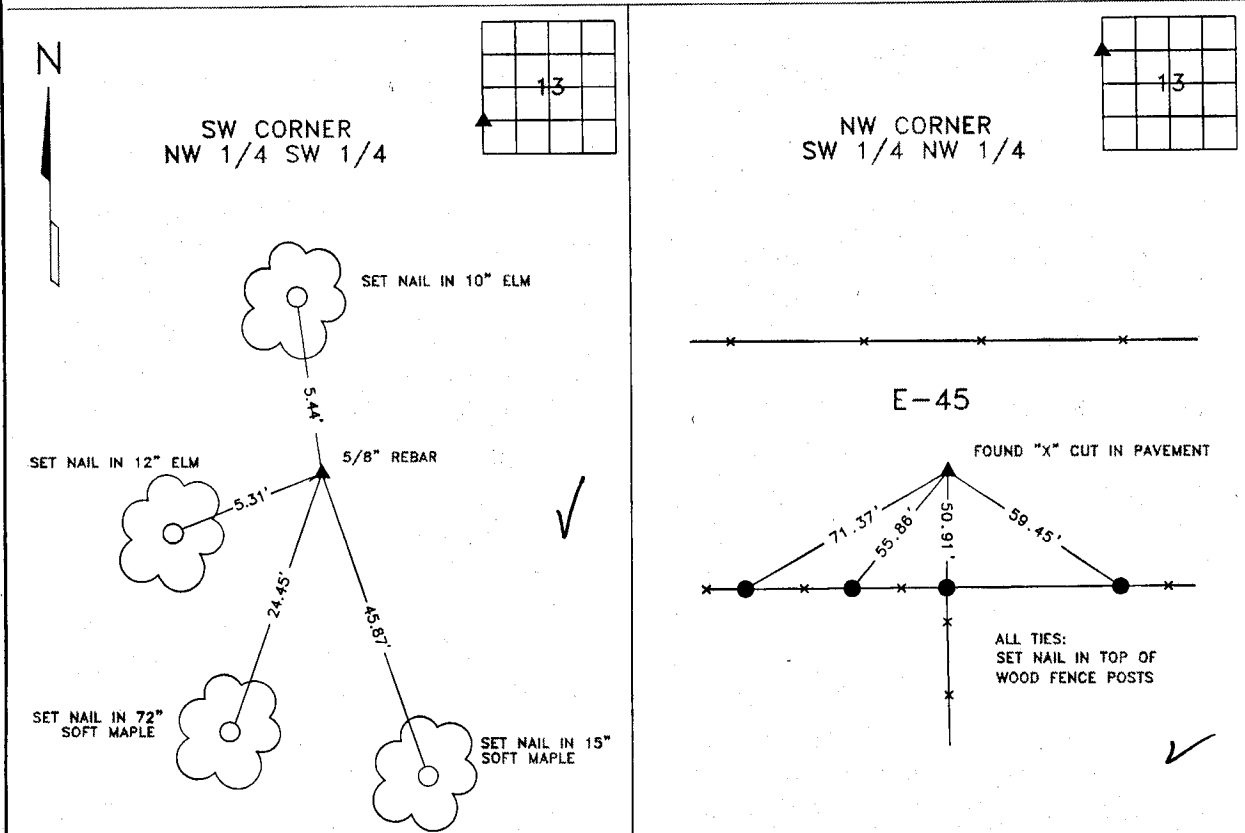
00 SEP 27 PM 2:13

MARIE KRUTZFIELD  
RECORDER 6.00 pd

CLARENCE J. WALTON, LS # 11310, WALTON LAND SURVEYING, P.C., 2213 LAUREN DR. SW, CEDAR RAPIDS, IOWA 52404, (319) 363-4271

UNITED STATES PUBLIC LAND  
SURVEY CORNER CERTIFICATE

LAND SURVEY MONUMENTS SITUATED IN SECTION 13, TOWNSHIP 83 NORTH, RANGE 3 WEST  
OF THE 5TH PRINCIPAL MERIDIAN, JONES COUNTY, IOWA



MONUMENT DESCRIPTION AND REMARKS  
FOUND 5/8" REBAR FROM PREVIOUS SURVEY. OLDER MONUMENT OF RECORD  
WASHED OUT BY FLOODING OF STREAM.

MONUMENT DESCRIPTION AND REMARKS  
FOUND "X" CUT IN PAVEMENT, CORNER USED ON PRIOR SURVEYS.

NOTE: ALL MEASUREMENTS IN FEET AND DECIMALS THEREOF.

	I hereby certify that this land surveying document and the related survey work was performed by me or under my direct personal supervision and that I am a duly licensed Land Surveyor under the laws of the State of Iowa. Signed <i>Clarence J. Walton</i> Date <i>9/27/00</i> Clarence J. Walton, L.S. My License Renewal Date is December 31, 2001 License Number 11310 Pages or sheets covered by this seal: 1 of 1	CORNERS TO BE INDEXED			
		CORNERS	SECTION	TWP	RANGE
	SW NW 1/4	13	83N	3W	
	SW 1/4	13	83N	3W	
	NW SW 1/4				
	NW 1/4				

PROJECT No: 10030-25	Title: UNITED STATES PUBLIC LAND SURVEY CORNER CERTIFICATE	WALTON LAND SURVEYING, P.C. 2213 LAUREN DRIVE SW CEDAR RAPIDS, IOWA 52404 (319) 363-4271	Drawn: CJW	Book: 3
			9/26/00	Scale: NONE