

COPY

Jones County Marie Krutzfield Recorder  
 Fee Book 2012 3090  
 10/24/2012 @0312PM # Pages 1  
 ZSC SEC COR CERT  
 Total Fees: \$0.00

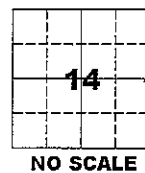
PREPARED BY  
 CLARENCE J. WALTON, JONES COUNTY ENGINEER'S OFFICE, 19501 HWY. 64, ANAMOSA, IOWA, 52205 (319) 462-3785

# UNITED STATES PUBLIC LAND SURVEY CORNER CERTIFICATE

LAND SURVEY MONUMENTS SITUATED IN SECTION 14, TOWNSHIP 83 NORTH,  
 RANGE 3 WEST OF THE 5TH PRINCIPAL MERIDIAN, JONES COUNTY, IOWA.

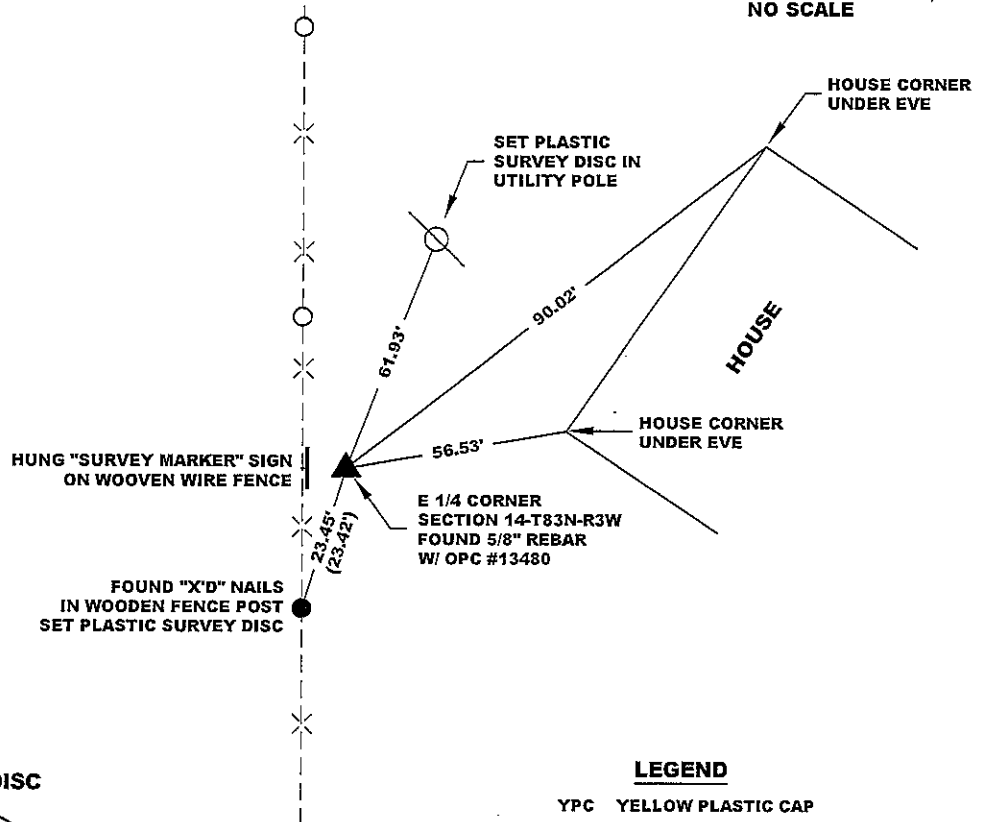
STATE PLANE COORDINATE  
 NAD 83 IOWA NORTH  
 N: 3471145.12  
 E: 5559522.21

CORNER SECTION TOWNSHIP RANGE  
 E 1/4 CORNER 14 83N 3W

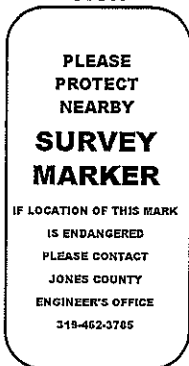


NOTES:

- 1) THE STATE PLANE COORDINATES AS SHOWN ARE FOR CONVENIENCE ONLY. THE TIES AS SHOWN SHOULD BE USED TO REPLACE THE CORNER, IF DESTROYED.
- 2) COORDINATES AS SHOWN ARE GRID COORDINATES AND BASED ON JONES COUNTY G.P.S. CONTROL NETWORK WHICH IN TURN IS BASED ON NAD 83 IOWA NORTH DATUM.
- 3) ALL MEASUREMENTS ARE IN FEET AND DECIMALS THEREOF.
- 4) \* GRID DISTANCE, BASED ON JONES COUNTY G.P.S. CONTROL NETWORK.



"SURVEY MARKER" SIGN



SURVEY DISC



LEGEND

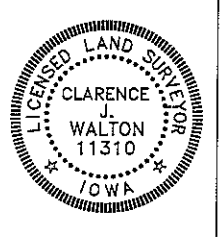
- YPC YELLOW PLASTIC CAP
- OPC ORANGE PLASTIC CAP
- RPC RED PLASTIC CAP
- ( ) RECORDED AS

PAGE 1 of 1

PREVIOUSLY RECORDED IN RECORDER'S DOCUMENT 2006 3941

MONUMENT DESCRIPTION AND HOW ESTABLISHED FOUND 5/8" REBAR W/ORANGE PLASTIC CAP #13480 ± 6" ABOVE PRESENT GROUND SURFACE PER CORNER CERTIFICATE FILED IN RECORDER'S DOCUMENT 2006 3941. HUNG "SURVEY MARKER" SIGN ON WOODEN CORNER POST AS WITNESS TO THIS SECTION CORNER. SOME OF RECORDED TIES WERE GONE, ADDED NEW TIES AND PROVIDED STATE PLANE COORDINATES TO CORNER.

DATE OF SURVEY: 10/8/2012 FIELD BOOK: 381, PAGE 72.



I hereby certify that this land surveying document and the related survey work was performed by me or under my direct personal supervision and that I am a duly registered Land Surveyor under the laws of the State of Iowa.

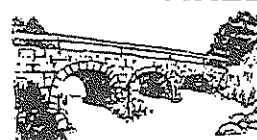
Signed: *Clarence J. Walton* 10/24/12  
 Clarence J. Walton, L.S.  
 My Registration Renewal Date is December 31, 2013  
 Iowa License Number 11310  
 Pages or sheets covered by this seal: 1 of 1.

- A. THERE IS NO CERTIFICATE FOR THE CORNER ON FILE WITH THE RECORDER OF THE COUNTY IN WHICH THE CORNER IS LOCATED.
- B. THE CORNER MONUMENT HAS BEEN REPLACED OR MODIFIED.
- C. THE SURVEYOR IN RESPONSIBLE CHARGE OF THE LAND SURVEYING ACCEPTS A CORNER POSITION THAT DIFFERS FROM THAT SHOWN IN THE PUBLIC RECORDS OF THE COUNTY IN WHICH THE CORNER IS LOCATED.
- D. THE REFERENCE TIES REFERRED TO IN AN EXISTING PUBLIC RECORD NO LONGER EXIST.
- E. ADDED NEW TIES AND PROVIDED STATE PLANE COORDINATES.

CORNERS TO BE INDEXED

CORNER	SECTION	TOWNSHIP	RANGE
E 1/4 CORNER	14	83N	3W
W 1/4 CORNER	13	83N	3W

JONES COUNTY ENGINEER'S OFFICE



19501 HWY. 64, ANAMOSA, IOWA 52205  
 (319) 462-3785

COPY

Jones County Marie Krutzfield Recorder  
 Fee Book 2012 3018  
 10/18/2012 @0201PM # Pages 1  
 ZSC SEC COR CERT  
 Total Fees: \$0.00

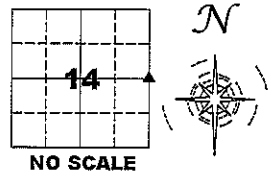
PREPARED BY  
 CLARENCE J. WALTON, JONES COUNTY ENGINEER'S OFFICE, 19501 HWY. 64, ANAMOSA, IOWA, 52205 (319) 462-3785

# UNITED STATES PUBLIC LAND SURVEY CORNER CERTIFICATE

LAND SURVEY MONUMENTS SITUATED IN SECTION 14, TOWNSHIP 83 NORTH,  
 RANGE 3 WEST OF THE 5TH PRINCIPAL MERIDIAN, JONES COUNTY, IOWA.

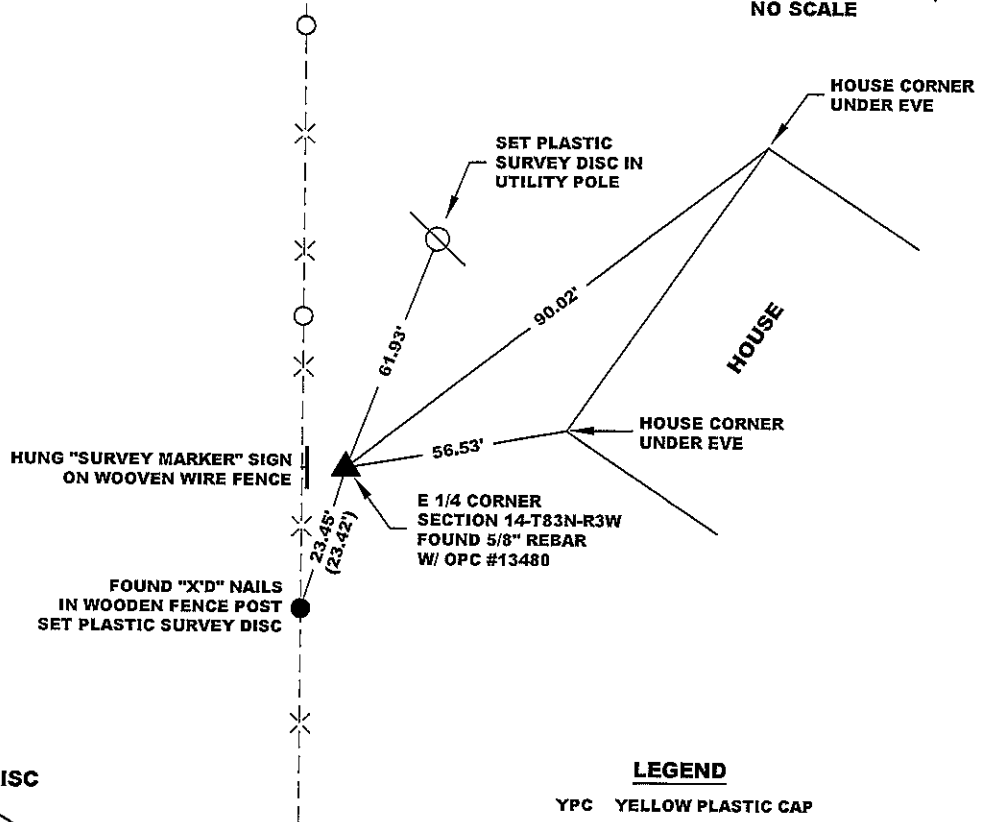
STATE PLANE COORDINATE  
 NAD 83 IOWA NORTH  
 N: 3471145.12  
 E: 5559522.21

CORNER SECTION TOWNSHIP RANGE  
 E 1/4 CORNER 14 83N 3W

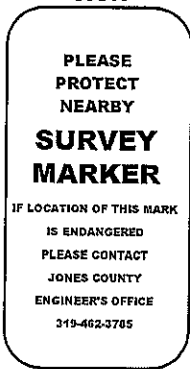


NOTES:

- 1) THE STATE PLANE COORDINATES AS SHOWN ARE FOR CONVENIENCE ONLY. THE TIES AS SHOWN SHOULD BE USED TO REPLACE THE CORNER, IF DESTROYED.
- 2) COORDINATES AS SHOWN ARE GRID COORDINATES AND BASED ON JONES COUNTY G.P.S. CONTROL NETWORK WHICH IN TURN IS BASED ON NAD 83 IOWA NORTH DATUM.
- 3) ALL MEASUREMENTS ARE IN FEET AND DECIMALS THEREOF.
- 4) \* GRID DISTANCE, BASED ON JONES COUNTY G.P.S. CONTROL NETWORK.



"SURVEY MARKER" SIGN



SURVEY DISC



LEGEND

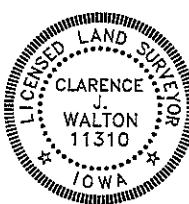
- YPC YELLOW PLASTIC CAP
- OPC ORANGE PLASTIC CAP
- RPC RED PLASTIC CAP
- ( ) RECORDED AS

PAGE 1 of 1

PREVIOUSLY RECORDED IN RECORDER'S DOCUMENT 2006 3941

MONUMENT DESCRIPTION AND HOW ESTABLISHED FOUND 5/8" REBAR W/ORANGE PLASTIC CAP #13480 ± 6" ABOVE PRESENT GROUND SURFACE PER CORNER CERTIFICATE FILED IN RECORDER'S DOCUMENT 2006 3941. HUNG "SURVEY MARKER" SIGN ON WOODEN CORNER POST AS WITNESS TO THIS SECTION CORNER. SOME OF RECORDED TIES WERE GONE, ADDED NEW TIES AND PROVIDED STATE PLANE COORDINATES TO CORNER.

DATE OF SURVEY: 10/8/2012 FIELD BOOK: 381, PAGE 72.



I hereby certify that this land surveying document and the related survey work was performed by me or under my direct personal supervision and that I am a duly registered Land Surveyor under the laws of the State of Iowa.

Signed: *Clarence J. Walton* 10/11/12  
 Clarence J. Walton, L.S.  
 My Registration Renewal Date is December 31, 2013  
 Iowa License Number 11310  
 Pages or sheets covered by this seal: 1 of 1.

- A. THERE IS NO CERTIFICATE FOR THE CORNER ON FILE WITH THE RECORDER OF THE COUNTY IN WHICH THE CORNER IS LOCATED.
- B. THE CORNER MONUMENT HAS BEEN REPLACED OR MODIFIED.
- C. THE SURVEYOR IN RESPONSIBLE CHARGE OF THE LAND SURVEYING ACCEPTS A CORNER POSITION THAT DIFFERS FROM THAT SHOWN IN THE PUBLIC RECORDS OF THE COUNTY IN WHICH THE CORNER IS LOCATED.
- D. THE REFERENCE TIES REFERRED TO IN AN EXISTING PUBLIC RECORD NO LONGER EXIST.
- E. ADDED NEW TIES AND PROVIDED STATE PLANE COORDINATES.

CORNERS TO BE INDEXED

CORNER	SECTION	TOWNSHIP	RANGE
E 1/4 CORNER	14	83N	3W
W 1/4 CORNER	13	83N	3W

JONES COUNTY ENGINEER'S OFFICE



19501 HWY. 64, ANAMOSA, IOWA 52205  
 (319) 462-3785

Marie Krutzfield, Recorder  
 Jones County, Iowa

PREPARED BY: LEO P. BONIFAZI SCHNOOR-BONIFAZI ENGINEERING & SURVEYING, LC 320, 11TH AVE SE, STE 123 CEDAR RAPIDS, IA 52401 319-298-8888

UNITED STATES PUBLIC LAND SURVEY CORNER CERTIFICATE

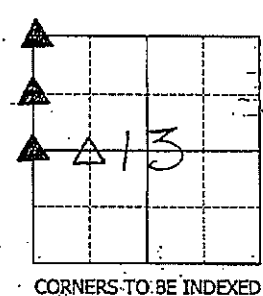
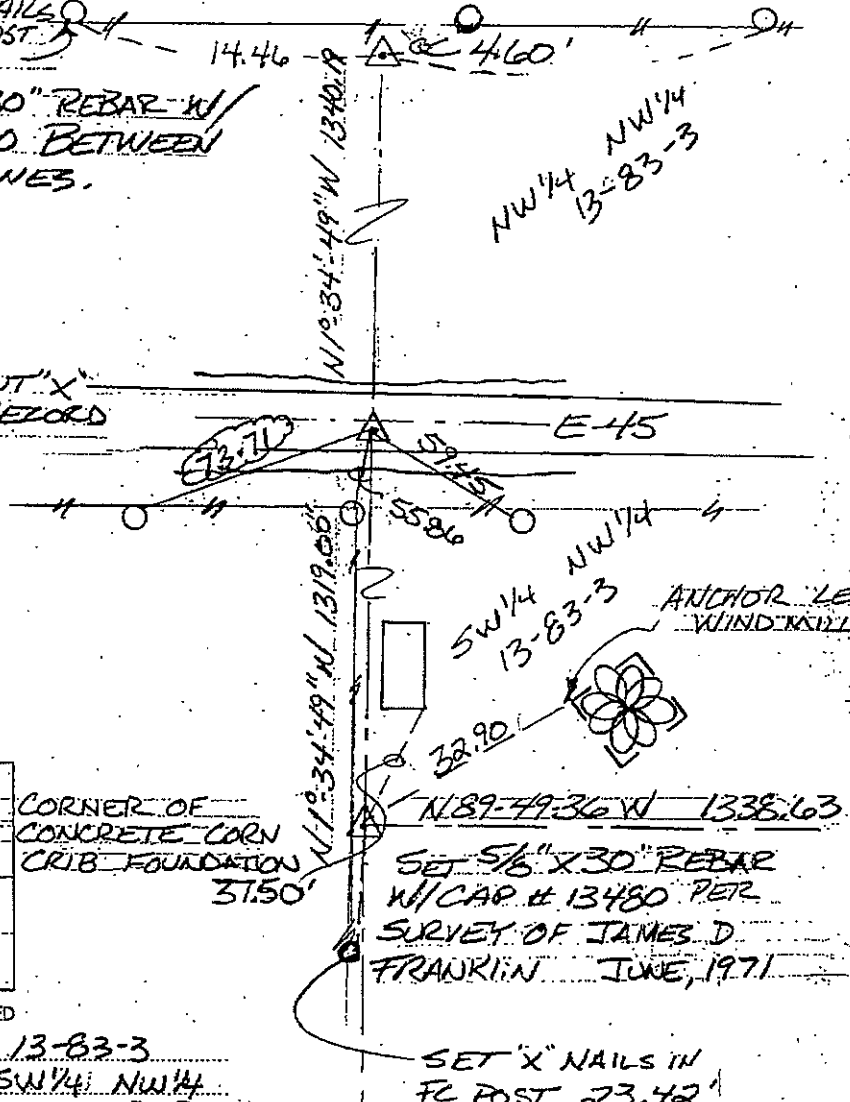
Land Survey Monuments Situated in Section 13, Township 83 North, Range 3 W of the Fifth Principal Meridian, JONES County, Iowa. Reason for filing NO CERTIFICATE ON FILE

NW CORNER 13-83-3 FOUND "X" NAILS IN FENCELINE W/ RIBBON TIED TO WIRE AT APPROX MID POINT. DUG, PROBED & USED MAGNETIC LOCATOR ALONG FENCE. FOUND TWO PIECES OF LIMESTONE APPROX 10" TRIANGULAR SECTIONS. NO OTHER MONUMENTS FOUND. CENTERED 5/8" X 30" REBAR BETWEEN STONES.  
NW CORNER SW 1/4 NW 1/4 13-83-3 CUT X HAS BEEN REMOVED BY CONCRETE PAVEMENT PATCH. REPLACED USING TIES IN BOOK 5000-2962 DIST. 71.37 CORRECTED TO BE 73.71 TO FIT REMAINING TIES.  
W 1/4 CORNER 13-83-3 SET 5/8" X 30" REBAR W/CAP # 13480 BY EXTENDING WEST LINE NW 1/4 NW 1/4 SOUTH AT PLATTED DISTANCE. BEARING OF E-45 P.O.W. EXTENDED WEST FROM SE COR SW 1/4 NW 1/4 AGREES W/ SURVEY OF JAMES D. FRANKLIN JUNE, 1971.

FOUND "X" NAILS IN FENCE POST TYP. 14.46' 4.60'

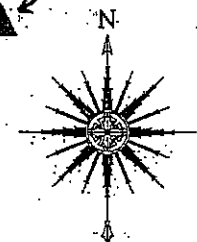
SET 5/8" X 30" REBAR W/CAP # 13480 BETWEEN TWO STONES.

RESET CUT "X" PER TIE RECORD 5000-2962



CORNER OF CONCRETE CORN CRIB FOUNDATION 3750'

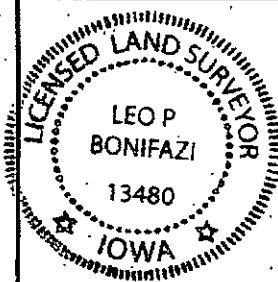
SET 5/8" X 30" REBAR W/CAP # 13480 PER SURVEY OF JAMES D. FRANKLIN JUNE, 1971



NW CORNER 13-83-3  
 NW CORNER SW 1/4 NW 1/4  
 W 1/4 CORNER 13-83-3

SET "X" NAILS IN FC POST 23.42'

DRAWN: LPB  
 NOT TO SCALE  
 DATE: 10-19-06



I HEREBY CERTIFY THAT THIS LAND SURVEYING DOCUMENT WAS PREPARED AND THE RELATED SURVEY WORK WAS PERFORMED BY ME OR UNDER MY DIRECT PERSONAL SUPERVISION AND THAT I AM A DULY LICENSED LAND SURVEYOR UNDER THE LAWS OF THE STATE OF IOWA

SIGNATURE: *[Signature]* DATE: 10-19-06  
 LEO P. BONIFAZI  
 LICENSE NO. 13480  
 SHEETS COVERED BY THIS SEAL: THIS SHEET ONLY  
 MY LICENSE RENEWAL DATE IS DECEMBER 31, 2007

SCHNOOR-BONIFAZI ENGINEERING & SURVEYING, LC  
 320 11TH AVENUE SE, STE. 123  
 CEDAR RAPIDS, IA 52401  
 (319) 298-8888 (PHONE)  
 (319) 298-8889 (FAX)  
 s-b-engineering.com

