

Instrument #: 2018-3253

12/03/2018 10:02:53 AM Total Pages: 1

ZSC SECTION CORNER CERTIFICATE

Recording Fee: \$7.00 Transfer Tax: \$0
Sheri L. Jones, Recorder, Jones County Iowa



RETURN TO &

PREPARED BY: LEO P. BONIFAZI SCHNOOR-BONIFAZI ENGINEERING & SURVEYING LC, 431 FIFTH AVENUE SW, CEDAR RAPIDS, IA 52404 319-298-8888

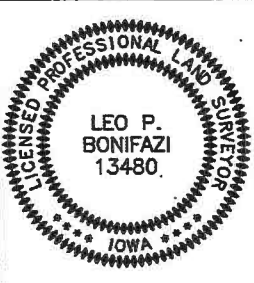
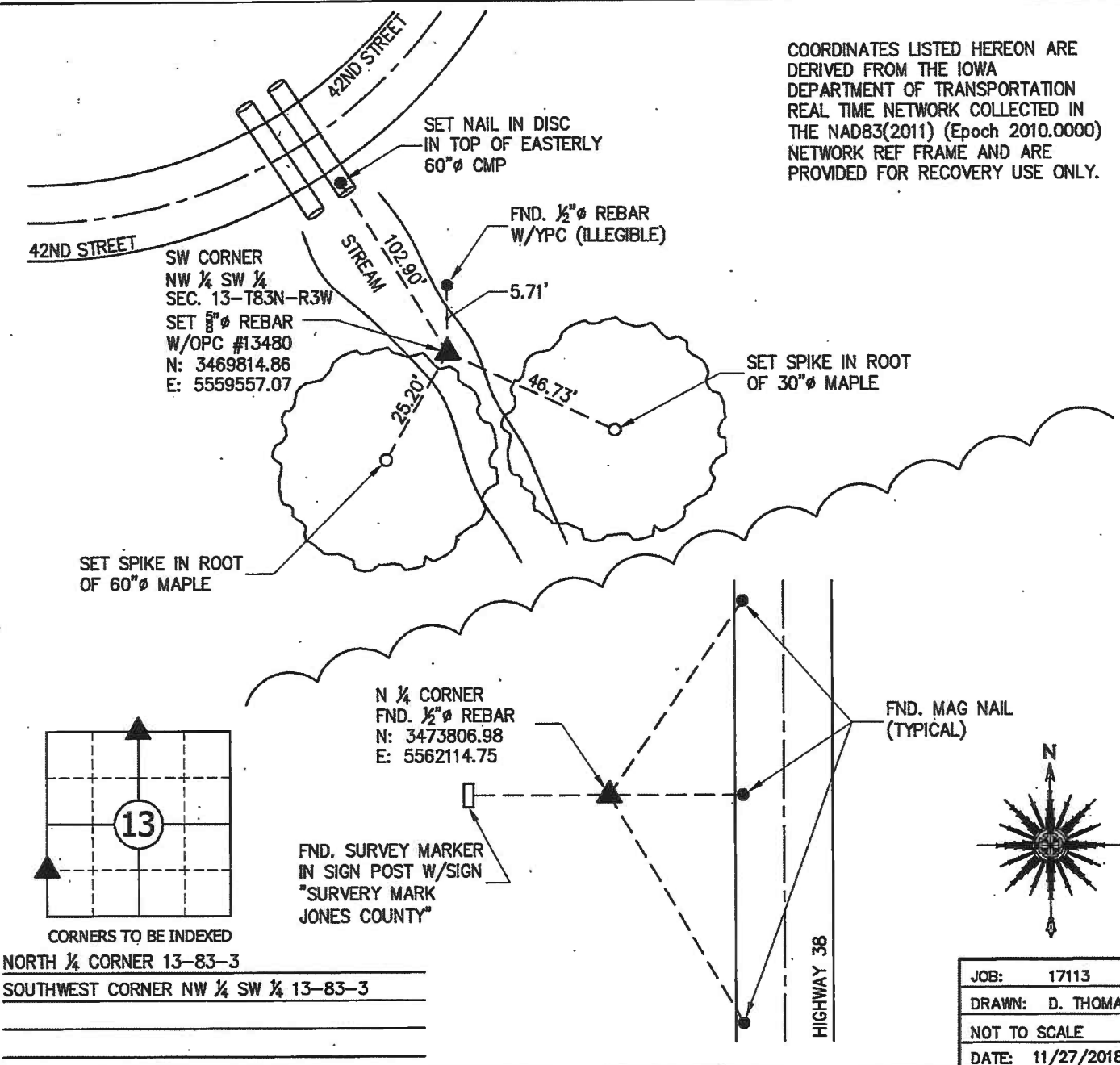
UNITED STATES PUBLIC LAND SURVEY CORNER CERTIFICATE

Land Survey Monuments Situated in Section 13, Township 83 North, Range 3 West of the Fifth Principal Meridian, JONES County, Iowa.

Reason for filing: a. No certificate of record found. b. Monument or ties found differ from record. c. Replaced section corner.

NORTH QUARTER CORNER - FOUND 1/2" REBAR USING CORNER CERTIFICATE RECORDED IN BOOK 356, PAGE 141. ALL TIES MISSING FROM PREVIOUS CERTIFICATE. FOUND OTHER REFERENCE MONUMENTS BUT FOUND NO UPDATED CORNER CERTIFICATE. TIED OUT AS SHOWN BELOW.

SOUTHWEST CORNER NW 1/4 SW 1/4 - MONUMENT HAS BEEN WASHED OUT AS IT FALLS IN A STREAM. RESET MONUMENT WITH A 5/8" REBAR WITH AN ORANGE PLASTIC CAP EMBOSSED "BONIFAZI PLS 13480" USING DISTANCES FROM A PLAT OF SURVEY RECORDED IN BOOK 2002, PAGE 3454. ALL PREVIOUS TIES MISSING, SET NEW TIES AS SHOWN BELOW.



I HEREBY CERTIFY THAT THIS LAND SURVEYING DOCUMENT WAS PREPARED AND THE RELATED SURVEY WORK WAS PERFORMED BY ME OR UNDER MY DIRECT PERSONAL SUPERVISION AND THAT I AM A DULY LICENSED PROFESSIONAL LAND SURVEYOR UNDER THE LAWS OF THE STATE OF IOWA.

SIGNATURE: *Leo P. Bonifazi* DATE: 11/27/2018

LEO P. BONIFAZI
LICENSE NO. 13480
SHEETS COVERED BY THIS SEAL: THIS SHEET ONLY

MY LICENSE RENEWAL DATE IS DECEMBER 31, 2019

SCHNOOR-BONIFAZI ENGINEERING & SURVEYING, LC
431 FIFTH AVENUE SW
CEDAR RAPIDS, IA 52404
(319) 298-8888 (PHONE)

Schnoor Bonifazi
Engineering & Surveying

s-b-engineering.com

2000 2962

FILED
RECORDERS OFFICE
JONES COUNTY IOWA

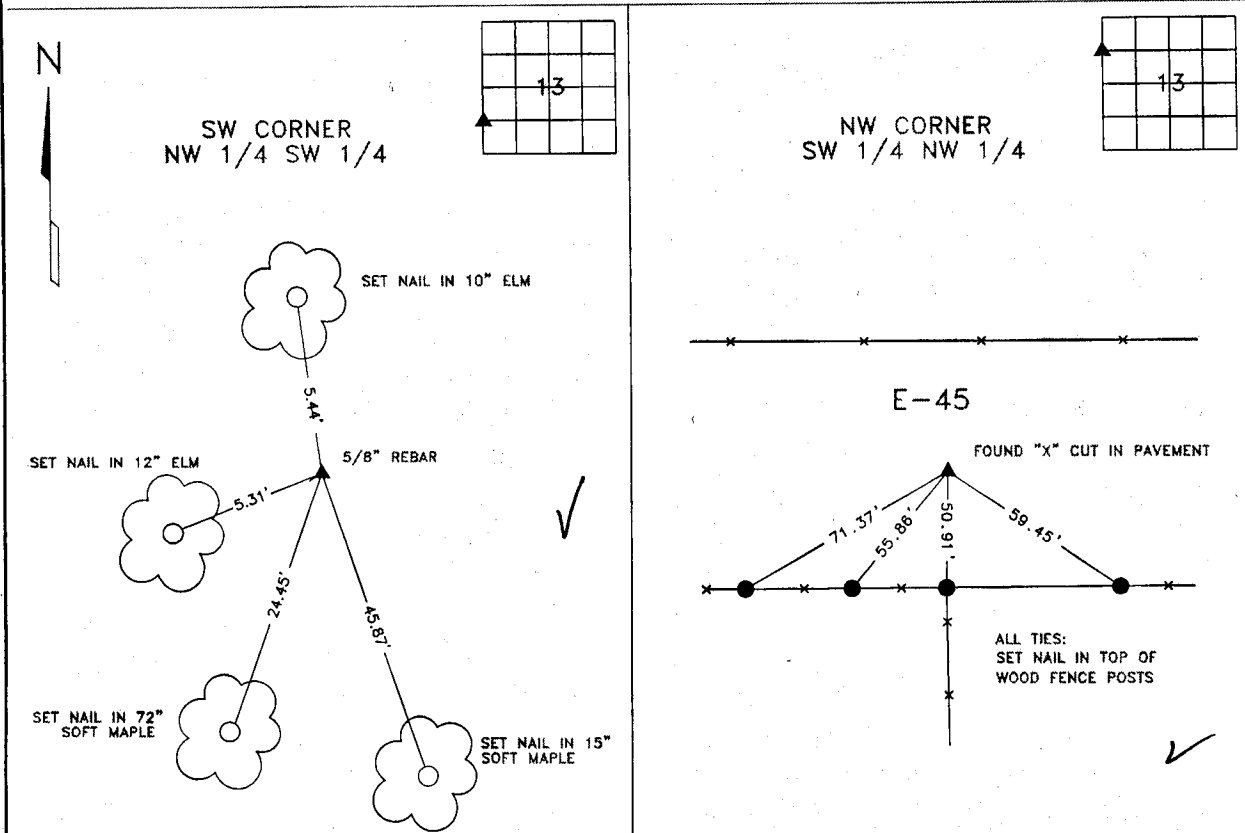
00 SEP 27 PM 2:13

MARIE KRUTZFIELD
RECORDER 6.00 pd

CLARENCE J. WALTON, LS # 11310, WALTON LAND SURVEYING, P.C., 2213 LAUREN DR. SW, CEDAR RAPIDS, IOWA 52404, (319) 363-4271

UNITED STATES PUBLIC LAND
SURVEY CORNER CERTIFICATE

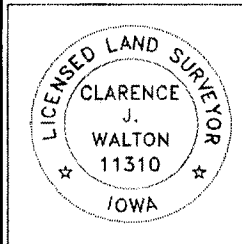
LAND SURVEY MONUMENTS SITUATED IN SECTION 13, TOWNSHIP 83 NORTH, RANGE 3 WEST
OF THE 5TH PRINCIPAL MERIDIAN, JONES COUNTY, IOWA



MONUMENT DESCRIPTION AND REMARKS
FOUND 5/8" REBAR FROM PREVIOUS SURVEY. OLDER MONUMENT OF RECORD
WASHED OUT BY FLOODING OF STREAM.

MONUMENT DESCRIPTION AND REMARKS
FOUND "X" CUT IN PAVEMENT, CORNER USED ON PRIOR SURVEYS.

NOTE: ALL MEASUREMENTS IN FEET AND DECIMALS THEREOF.



I hereby certify that this land surveying document and the related survey work was performed by me or under my direct personal supervision and that I am a duly licensed Land Surveyor under the laws of the State of Iowa.

Signed *Clarence J. Walton* Date *9/27/00*

Clarence J. Walton, L.S.
My License Renewal Date is December 31, 2001
License Number 11310
Pages or sheets covered by this seal: 1 of 1

CORNERS TO BE INDEXED			
CORNERS	SECTION	TWP	RANGE
SW NW 1/4	13	83N	3W
SW 1/4	13	83N	3W
NW SW 1/4	13	83N	3W

PROJECT No: 10030-25	Title: UNITED STATES PUBLIC LAND SURVEY CORNER CERTIFICATE	WALTON LAND SURVEYING, P.C. 2213 LAUREN DRIVE SW CEDAR RAPIDS, IOWA 52404 (319) 363-4271	Drawn: CJW	Book: 3
			9/26/00	Scale: NONE