

COPY

Jones County
Marie Krutzfield, Recorder
Fee Book 2010 1097

05/03/2010 @1158AM
ZSC SEC COR CERT # Pages: 1
Book: Page: Total Fees: \$9.00

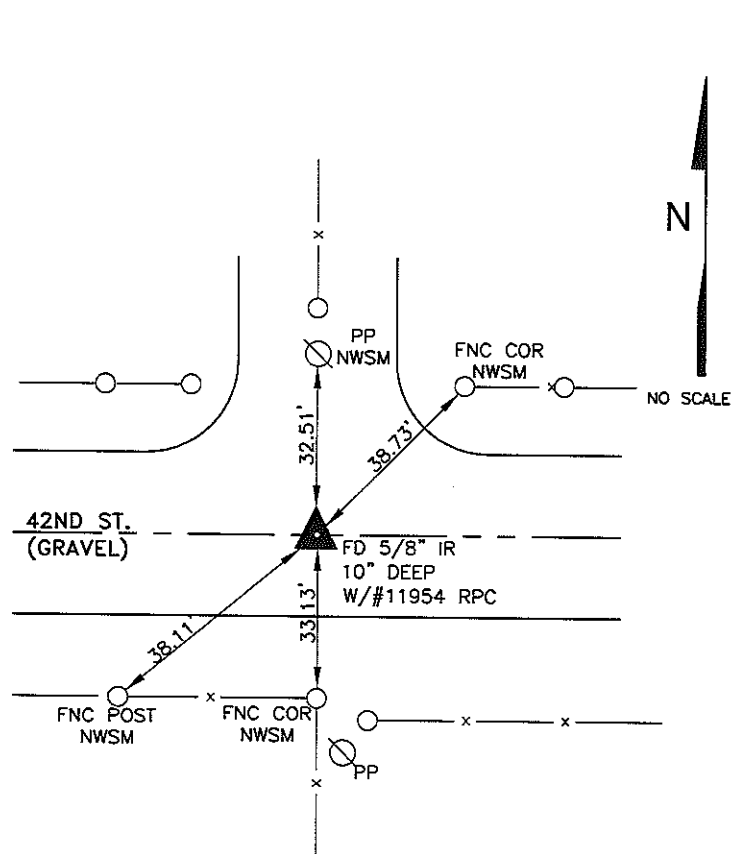
Prepared By: R. Rodney Klien, L.S. #18646 Anderson-Bogert Engineers & Surveyors, Inc. 4001 River Ridge Dr. N.E. Cedar Rapids, Iowa 52402 Phone: (319) 377-4629

UNITED STATES PUBLIC LAND SURVEY CORNER CERTIFICATE OF

Land Survey Monuments situated in Section 15, Township T83N, Range R3W, of the Fifth Principal Meridian, JONES County, Iowa.
Previously recorded in NOT PREVIOUSLY RECORDED in County Recorders Office.

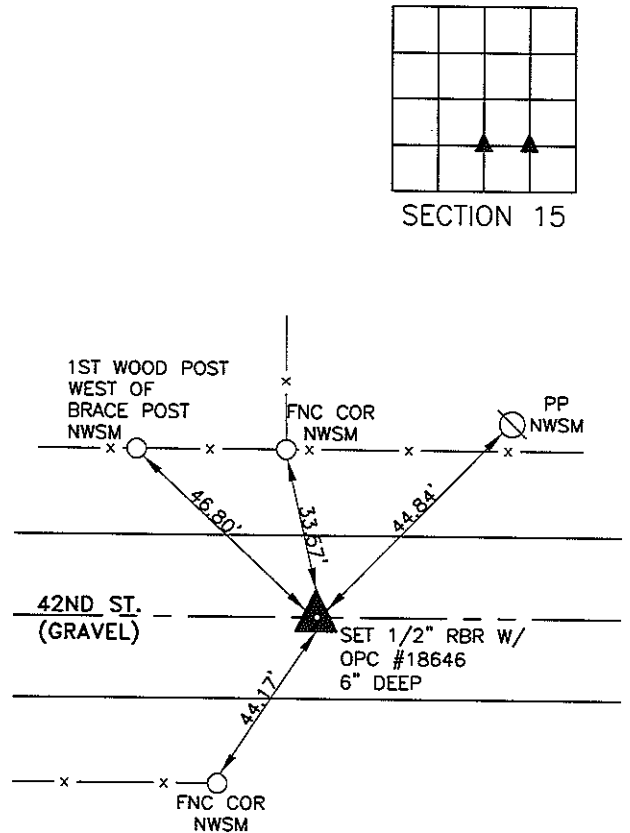
Monument Description and Remarks: ① FOUND 5/8" IR RBR W/RCP #11954 RELATED TO PLAT OF SURVEY RECORDED BY FILE #1999-3444 IN BOOK N, PAGE 105.
② SET 1/2" RBR W/ OPC #18646 BASED UPON UNRECORDED CORNER CERTIFICATE PROVIDED BY JONES COUNTY ENGINEER'S OFFICE AND OTHER PREVIOUSLY ESTABLISHED CORNERS.

PLAN - VIEW



① SW COR NW1/4 SE1/4 SECTION 15-T83N-R3W

*NWSM= NAIL WITH SURVEY MARKER



② SE COR NW1/4 SE1/4 SECTION 15-T83N-R3W

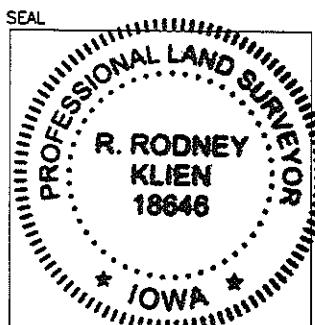
I hereby certify that this land surveying document was prepared and the related survey work was performed by me or under my direct personal supervision and that I am a duly licensed Land Surveyor under the laws of the State of Iowa

Signature: *R. Rodney Klien* Date: 4-28-10
Printed or typed name: R. Rodney Klien

License number: #18646

My license renewal date is December 31, 2011

Pages or sheets covered by this seal: 1 of 1



ANDERSON-BOGERT
Engineers & Surveyors, Inc.
4001 River Ridge Drive N.E. Cedar Rapids, Iowa 52402
Phone: (319) 377-4629

Corners	Section	Twp	Range
SW CORNER NW1/4 SE1/4	15	83N	3W
SE CORNER NW1/4 SE1/4	15	83N	3W

- THERE IS NO CERTIFICATE FOR THE CORNER ON FILE WITH THE RECORDER OF THE COUNTY IN WHICH THE CORNER IS LOCATED.
- THE SURVEYOR IN RESPONSIBLE CHARGE OF THE LAND SURVEYING ACCEPTS A CORNER POSITION WHICH DIFFERS FROM THAT SHOWN IN THE PUBLIC RECORDS OF THE COUNTY IN WHICH THE CORNER IS LOCATED.
- THE CORNER MONUMENT IS REPLACED OR MODIFIED IN ANY WAY.
- THE REFERENCE TIES IN AN EXISTING PUBLIC RECORD ARE INCORRECT OR MISSING.