

Instrument #: 2018-3501  
 12/31/2018 09:16:39 AM Total Pages: 1  
 ZSC SECTION CORNER CERTIFICATE  
 Recording Fee: \$7.00 Transfer Tax: \$0  
 Sheri L. Jones, Recorder, Jones County Iowa



Prepared by & Return to: Herold - Reicks Surveying, 10 East Main Street, New Hampton, IA 50659, Ph. 641-394-2725

## United States Public Land Survey Corner Certificate

Land Survey Monument situated in  
 Section 10, Township 83 North, Range 3 West of the Fifth Principal Meridian, Jones County, Iowa.  
 On file in Book 366, Page 286 in the County Recorder's office.

This certificate is being prepared in compliance with Iowa Code Chapter 355.11 because:



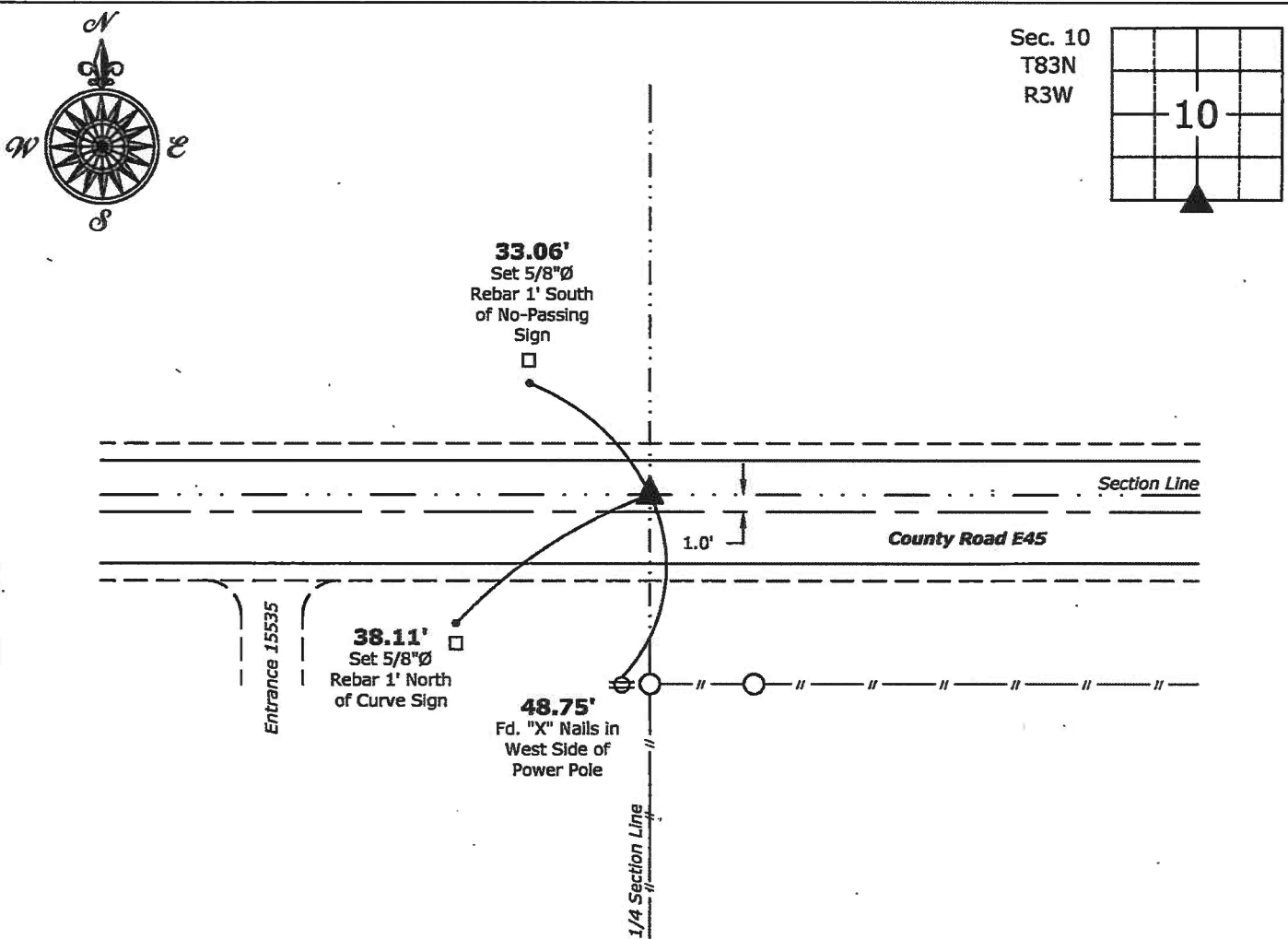
- There is no certificate on file for this corner.
- There are no longer three valid ties of record.
- There are changes to reference ties of record.
- There is change of monumentation of record.
- To clarify description of record monument (ties).

### Monument Description and Remarks:

**South 1/4 Corner:** Found PK-Nail with aluminum cap PLS 12642 with information obtained from the previously recorded Section Corner Certificate. Reset with 1"Ø Bronze Survey Marker PLS 19211 with coordinates obtained prior to highway reconstruction. Corner being reset in conjunction with Project No. FM-TSF-CO53(86)--5B-53.

### Plan View

(Show a minimum of three reference ties to durable physical objects, relevant monuments and physical conditions that will enable recovery of the corner.)



**South 1/4 Corner of Section 10-83-3**  
 Set 1"Ø Bronze Survey Marker PLS 19211



I hereby certify that this land surveying document was prepared and the related survey work was performed by me or under my direct personal supervision and that I am a duly licensed Land Surveyor under the laws of the State of Iowa.

*Kirk D. Reicks* 12-27-18  
 Kirk D. Reicks Date:

License number 19211  
 My license renewal date is December 31, 2020.  
 Sheets covered by this seal: Individual sheet only

#### List Corner to be Indexed

Corner	Section	Twp.	Range
S 1/4	10	83	3

Project Number: 2018-828

FB: 2018 Construction, Pgs. 13-15

UNITED STATES PUBLIC LAND SURVEY CORNER CERTIFICATE

OF

Land Survey Monuments situated in Section TEN (10), Township 83N, Range 3 WEST, of the Fifth Principal Meridian, JONES County, Iowa. Previously recorded in \_\_\_\_\_ in County Recorder's Office.

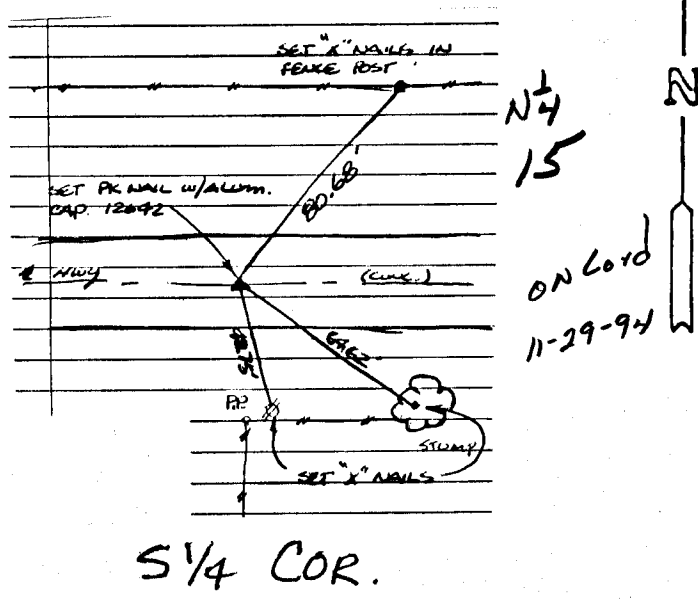
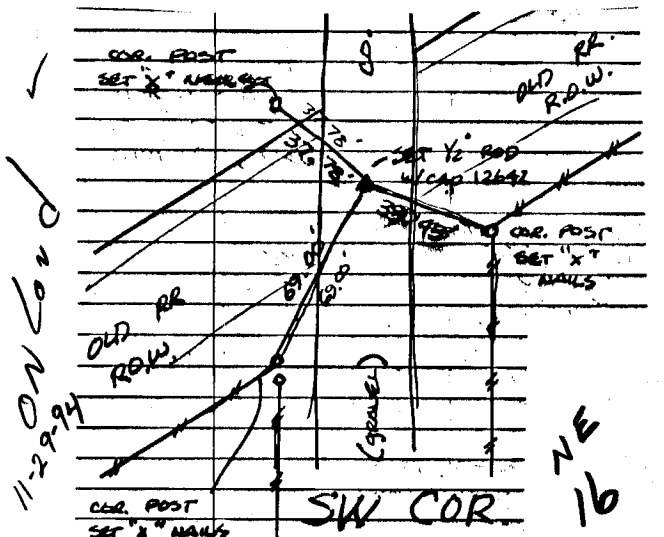
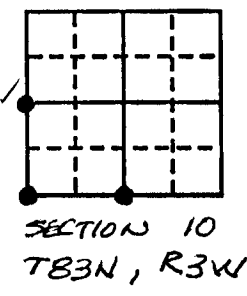
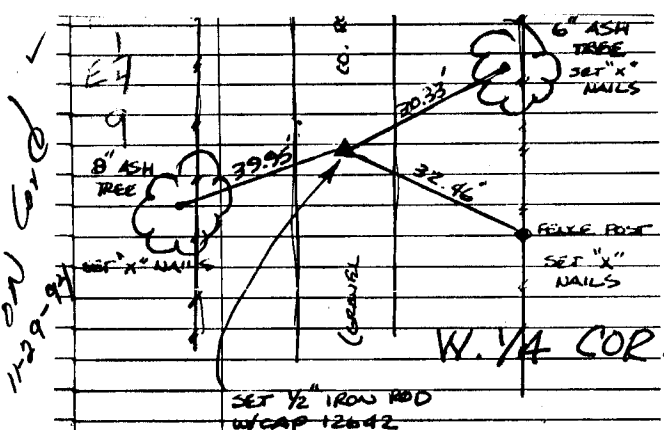
(book, page, document number, etc.)

(Show reason for preparing this certificate, the evidence and detailed procedures used in establishing the corner positions and monumentation found or placed.)

Monument Description and Remarks: NO CERTIFICATE PREVIOUSLY RECORDED  
RE-SET CORNERS IN ACCORDANCE WITH PLAT RECORDED  
IN IRREGULAR PLAT BOOK #1 PAGE 273  
ALL MONUMENTS SET AS DESCRIBED BELOW

PLAN - VIEW

(Show a minimum of three reference ties to durable physical objects, relevant monuments and physical conditions that will enable recovery of the corner.)

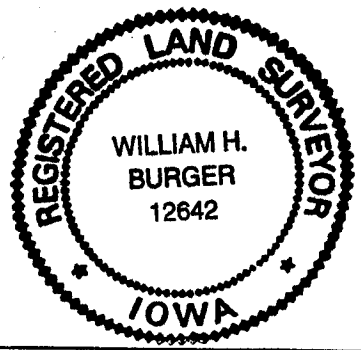


DATE OF FIELD WORK:

I hereby certify that the survey work was completed and this certificate was prepared by me or under my direct personal supervision and that I am a duly registered land surveyor under the laws of the state of Iowa.

Signature: William H. Burger  
 Name typed or printed: WILLIAM H. BURGER  
 Date: 10/5/94 Reg. No. 12642

Corners	List Corners to be Indexed		
	Section	Twp	Range
W 1/4	10	83N	3W
SW	10	83N	3W
S 1/4	10	83N	3W



SEAL