

03 MAR 13 PM 1:23

MARIE KRUTZFIELD 6.00 FD  
 RECORDER

PREPARED BY HALL & HALL ENGINEERS, INC. 209 29TH STREET N.E. CEDAR RAPIDS, IOWA 52402 (319) 362-9548

SECTION CORNER CERTIFICATE

OF  
 LAND SURVEY MONUMENTS SITUATED IN SECTION 16, TOWNSHIP 53 NORTH,  
 RANGE 3 WEST, OF THE FIFTH PRINCIPAL MERIDIAN, JONES COUNTY, IOWA.

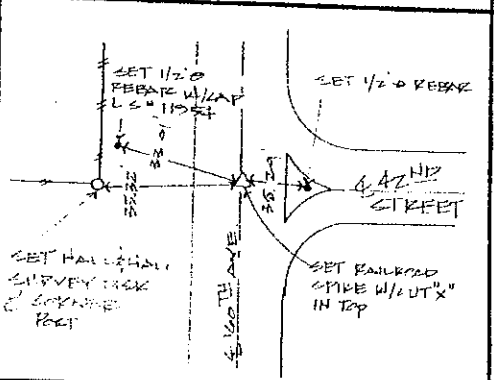
PREVIOUSLY RECORDED IN BOOK \_\_\_\_\_ AT PAGE \_\_\_\_\_

MONUMENT DESCRIPTION AND REMARKS:

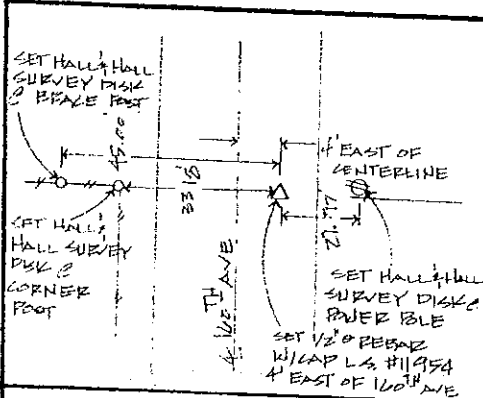
N.E. CORNER S.E. 1/4 - S.E. 1/4 OF SECTION 16, SET RAILROAD SPIKE W/OUT "X" AT TOP  
 S.E. CORNER OF SECTION 16, SET 1/2" REBAR W/ CAP L.S. #11954, 4' EAST OF CENTERLINE  
 W/4 CORNER OF SECTION 16, SET 1/2" REBAR W/ CAP L.S. #11954 ALONG WEST SIDE OF S.C.M.  
 E/4 CORNER OF SECTION 16, SET 1/2" REBAR W/ CAP L.S. #11954, 6" DEEP

RECOVERY TIE DRAWING

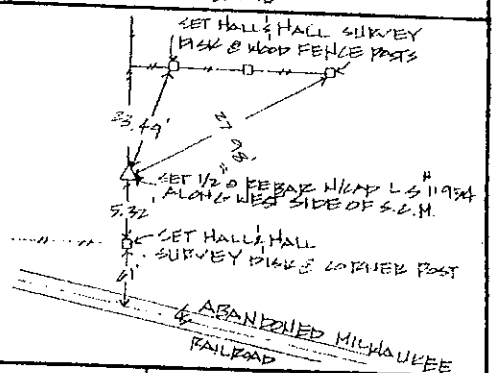
N.E. CORNER S.E. 1/4 - S.E. 1/4 OF SEC. 16



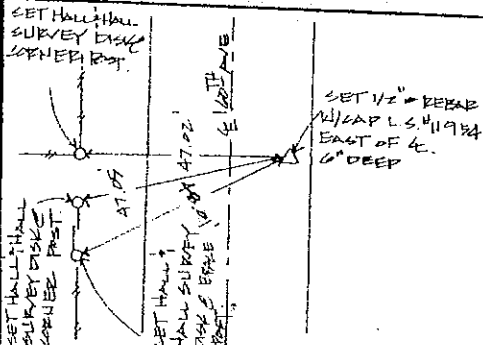
S.E. CORNER OF SEC. 16



W/4 CORNER OF SEC. 16



E/4 CORNER OF SEC. 16



I hereby certify that this land surveying document was prepared and the related survey work was performed by me or under my direct personal supervision and that I am a duly Licensed Land Surveyor under the laws of the State of Iowa.

Date: 2-27-03  
 Daniel J. Johnson L.S. #11954  
 My license expires on December 31, 2004

Pages or sheets covered by this cert: 1  
 (Enter submission unless specified here)



- REASON FOR PREPARING CERTIFICATE:
- A) THERE IS NO CERTIFICATE FOR THE CORNER ON FILE WITH THE RECORDER OF THE COUNTY IN WHICH THE CORNER IS LOCATED
  - B) CORNER POSITION DIFFERS FROM THAT SHOWN IN THE PUBLIC RECORDS OF THE COUNTY IN WHICH THE CORNER IS LOCATED
  - C) THE CORNER MONUMENT HAS BEEN REPLACED OR MODIFIED
  - D) THE REFERENCE TIES REFERRED TO IN AN EXISTING PUBLIC RECORD ARE INCORRECT

|   |   |   |
|---|---|---|
| L<br>A<br>C<br>E<br>N<br>S<br>I<br>O<br>N | GOVERNMENT CORNER<br>PROPERTY CORNER FOUND<br>1/7" 3/8" W/ L.S. CAP SET<br>1/4" 1/2" 3/4" 1" 1 1/2" 2" 3" 4" 6" 8" 12" 18" 24" 36" 48" 60" 72" 96" 120" 144" 180" 240" 360" 480" 600" 720" 960" 1200" | HALL AND HALL ENGINEERS, INC.<br>209 29TH STREET N.E.<br>CEDAR RAPIDS, IOWA 52402<br>(319) 362-9548 |
|   | PUBLIC LAND SURVEY RECORD<br>PROJECT FILE: JEAN KICKLES   | 209 29TH STREET N.E.<br>CEDAR RAPIDS, IOWA 52402<br>(319) 362-9548                                  |
| NO. 101<br>TMR                            | NO. 101<br>BLD  | NO. 101<br>BLD  |
| NO. 101<br>TMR                            | NO. 101<br>BLD  | NO. 101<br>BLD  |

2003 1075

FILED  
RECORDERS OFFICE  
JONES COUNTY IOWA

03 MAR 13 PM 1:20

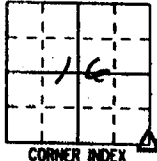
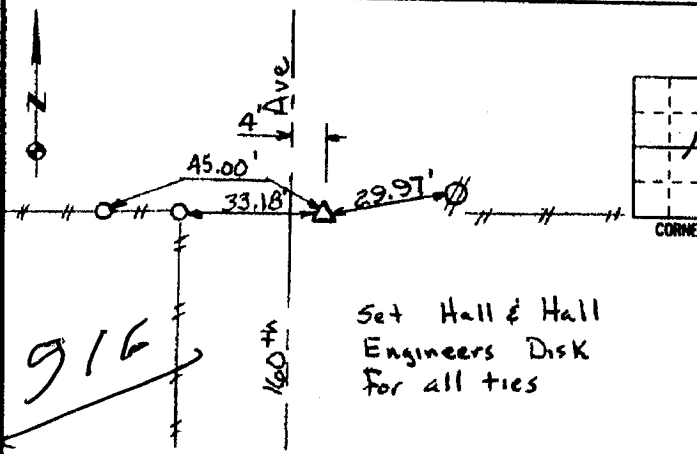
MARIE KRUTZFIELD  
RECORDER 6.00 Pd

PREPARED BY HALL & HALL ENGINEERS, INC. 209 29TH STREET N.E. CEDAR RAPIDS, IOWA 52402 (319) 362-9548

LAND SURVEY MONUMENTS SITUATED IN SECTION 16 TOWNSHIP 83 NORTH,  
RANGE 3 WEST, OF THE FIFTH PRINCIPAL MERIDIAN, Jones COUNTY IOWA.

RECOVERY TIE DRAWING

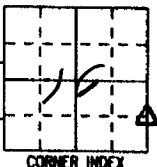
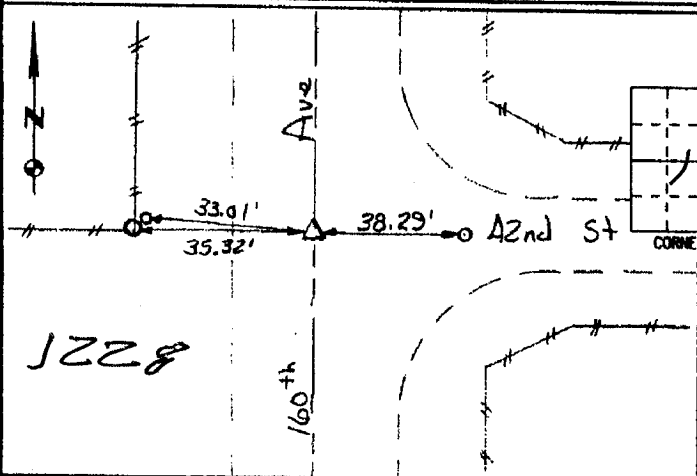
MONUMENT DESCRIPTION AND REMARKS:



SE 1/4 - 23.3

REASON FOR PREPARING CERTIFICATE (A, B, C OR D)  
PREVIOUS BOOK \_\_\_\_\_ PAGE \_\_\_\_\_  
Set 1/2" rebar w/ red cap  
# 11954

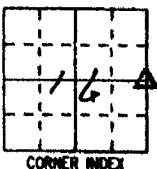
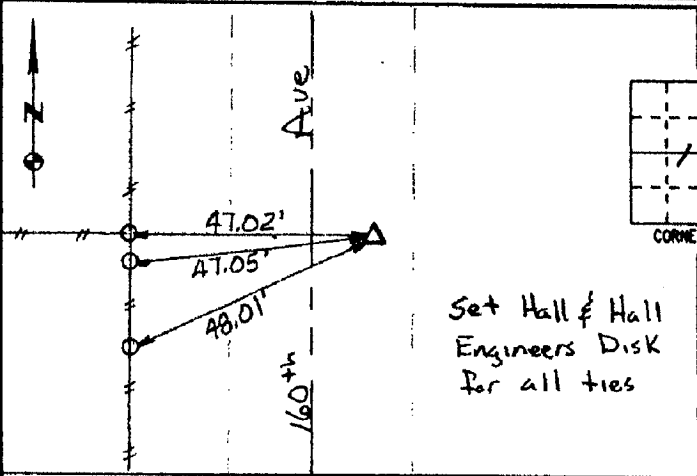
833216-022703



Northeast Corner SE 1/4 - SE 1/4

REASON FOR PREPARING CERTIFICATE: (A, B, C OR D)  
PREVIOUS BOOK \_\_\_\_\_ PAGE \_\_\_\_\_  
Set Railroad Spike w/ "X"  
cut in top

833166-022703



East Quarter Corner

REASON FOR PREPARING CERTIFICATE: (A, B, C OR D)  
PREVIOUS BOOK \_\_\_\_\_ PAGE \_\_\_\_\_  
Set 1/2" rebar w/ red cap  
# 11954

833160-022703

1006



I hereby certify that this land surveying document was prepared and the related survey work was performed by me or under my direct personal supervision and that I am a duly licensed Land Surveyor under the laws of the State of Iowa.

Signed: Daniel J. Johnson Date: 2-27-03

Daniel J. Johnson, L.S. 11954  
My license renewal date is December 31, 2004

Pages or sheets covered by this seal:  
(Entire submission unless specified here) 1

REASON FOR PREPARING CERTIFICATE:

- A) THERE IS NO CERTIFICATE FOR THE CORNER ON FILE WITH THE RECORDER OF THE COUNTY IN WHICH THE CORNER IS LOCATED.
- B) CORNER POSITION DIFFERS FROM THAT SHOWN IN THE PUBLIC RECORDS OF THE COUNTY IN WHICH THE CORNER IS LOCATED.
- C) THE CORNER MONUMENT HAS BEEN REPLACED OR MODIFIED.
- D) THE REFERENCE TIES REFERRED TO IN AN EXISTING PUBLIC RECORD ARE INCORRECT OR MISSING.

SHEET NO. U.S. PUBLIC LAND SURVEY CORNER CERTIFICATE

PROJECT NO. Rickles - Plat of Survey

HALL AND HALL ENGINEERS, INC.  
209 29TH STREET N.E.  
CEDAR RAPIDS, IOWA 52402  
(319) 362-9548

SCALE: NONE

BOOK NO. 0T51

PAGE NO. 6680

# UNITED STATES PUBLIC LAND SURVEY CORNER CERTIFICATE

LAND SURVEY MONUMENTS SITUATED IN SECTION 16, TOWNSHIP 83  
NORTH, RANGE 3 WEST OF THE 5TH P.M., JONES COUNTY, IOWA

**1006 CORNERS TO BE INDEXED**

|          |         |          |       |
|----------|---------|----------|-------|
| CORNER   | SECTION | TOWNSHIP | RANGE |
| EAST 1/4 | 16      | 83N      | 3W    |

OFFICE FILE NO. 83316o\_071601

CIRRC A-1936

REFERENCE:  
JONES COUNTY  
STONE BOOK 8,  
PAGE 57  
(KIRCHOFF)

FOUND STONE IN CENTERLINE OF ROAD IN LINE WITH E-W FENCE. LOWERED STONE, SET S.C.M. DIRECTLY ABOVE WITH TOP OF S.C.M. 12" BELOW PRESENT ROAD SURFACE.

NO CERTIFICATE ON THIS

FD. STONE IN CENTER OF ROAD IN LINE WITH FENCE, E-1/4 16-83-3

12" ELM

PREVIOUSLY RECORDED IN BOOK \_\_\_\_\_, PAGE \_\_\_\_\_  
MONUMENT DESCRIPTION AND HOW ESTABLISHED FOUND STONE IN CENTER OF ROAD IN LINE WITH FENCES. LOWERED STONE, SET S.C.M. DIRECTLY ABOVE WITH TOP OF S.C.M. 12" BELOW PRESENT ROAD SURFACE. EAST 1/4 COR. SEC. 16, T83N, R3W, 5TH P.M., JONES COUNTY, IOWA

**1007 CORNERS TO BE INDEXED**

|           |         |          |       |
|-----------|---------|----------|-------|
| CORNER    | SECTION | TOWNSHIP | RANGE |
| NORTH 1/4 | 16      | 83N      | 3W    |

OFFICE FILE NO. 83316c\_071601

CIRRC A-1936

REFERENCE:  
JONES COUNTY  
STONE BOOK 8,  
PAGE 48  
(KIRCHOFF)

*NO CERTIFICATE ON THIS*

FOUND LIMESTONE UNDER FENCE, SET S.C.M. ABOVE, N-1/4, 16-83-3

24" TWIN RED ELM

CREEK

PREVIOUSLY RECORDED IN BOOK \_\_\_\_\_, PAGE \_\_\_\_\_  
MONUMENT DESCRIPTION AND HOW ESTABLISHED FOUND LIMESTONE UNDER FENCE. FOUND ANOTHER STONE 6" BELOW. LOWERED BOTH STONES, SET S.C.M. DIRECTLY ABOVE WITH TOP OF S.C.M. FLUSH WITH GROUND. NORTH 1/4 COR. SEC. 16, T83N, R3W, 5TH P.M., JONES COUNTY, IOWA

**CORNERS TO BE INDEXED**

|        |         |          |       |
|--------|---------|----------|-------|
| CORNER | SECTION | TOWNSHIP | RANGE |
|        |         |          |       |

OFFICE FILE NO. \_\_\_\_\_

PREVIOUSLY RECORDED IN BOOK \_\_\_\_\_, PAGE \_\_\_\_\_  
MONUMENT DESCRIPTION AND HOW ESTABLISHED \_\_\_\_\_

**CORNERS TO BE INDEXED**

|        |         |          |       |
|--------|---------|----------|-------|
| CORNER | SECTION | TOWNSHIP | RANGE |
|        |         |          |       |

OFFICE FILE NO. \_\_\_\_\_

PREVIOUSLY RECORDED IN BOOK \_\_\_\_\_, PAGE \_\_\_\_\_  
MONUMENT DESCRIPTION AND HOW ESTABLISHED \_\_\_\_\_

~~I hereby declare that this plat, survey or report was made by me or under my direct personal supervision and that I am a duly registered Land Surveyor under the laws of the State of Iowa.~~

Signed: \_\_\_\_\_

Joseph D. Tjepkes L.S. Iowa Reg. No. 14807  
My Registration Renewal Date is December 31, 2002

SEAL

JONES COUNTY  
ENGINEER'S OFFICE

19501 HWY. 64,  
ANAMOSA, IOWA,  
52205 (319)462-3785