

2003 1076

FILED
RECORDERS OFFICE
JONES COUNTY IOWA

03 MAR 13 PM 1:21

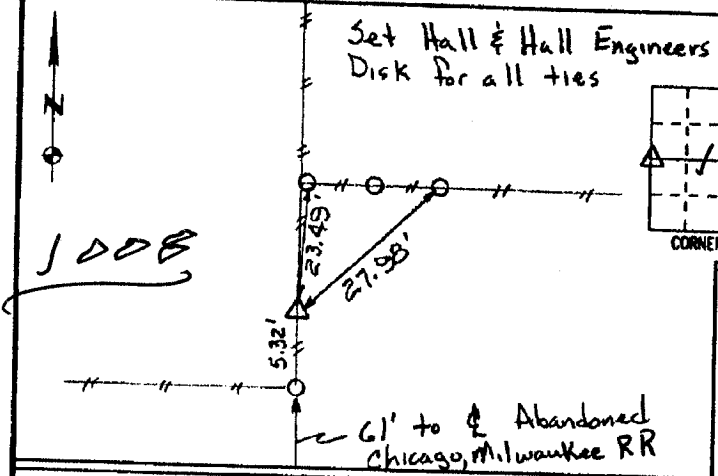
MARIE KRUTZFIELD
RECORDER 6.00 Pd

PREPARED BY HALL & HALL ENGINEERS, INC. 209 29TH STREET N.E. CEDAR RAPIDS, IOWA 52402 (319) 362-9548

LAND SURVEY MONUMENTS SITUATED IN SECTION 16, TOWNSHIP 83 NORTH,
RANGE 3 WEST, OF THE FIFTH PRINCIPAL MERIDIAN, Jones COUNTY IOWA.

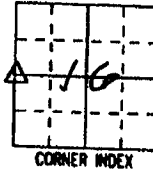
RECOVERY TIE DRAWING

MONUMENT DESCRIPTION AND REMARKS:



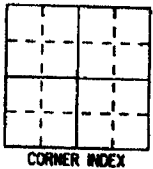
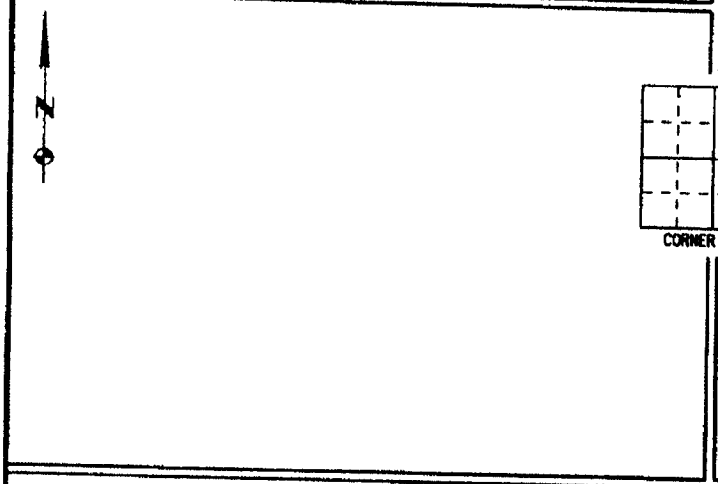
West Quarter Corner E 1/4 17 83 3

REASON FOR PREPARING CERTIFICATE: (A) B. C OR D
PREVIOUS BOOK _____ PAGE _____

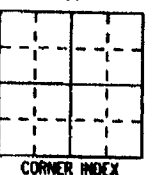
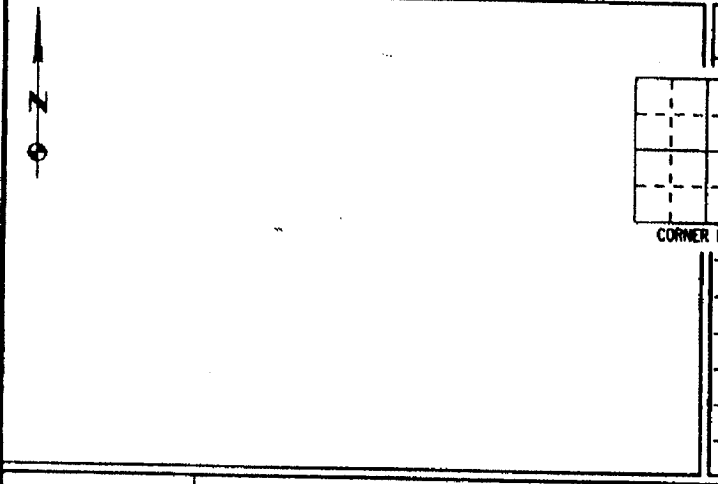


Found Concrete Monument
6" deep. Set 1/2" rebar
w/red cap # 11954 along
west side of SCM

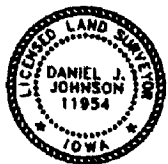
833170-022703



REASON FOR PREPARING CERTIFICATE: A, B, C OR D
PREVIOUS BOOK _____, PAGE _____



REASON FOR PREPARING CERTIFICATE: A, B, C OR D
PREVIOUS BOOK _____, PAGE _____



I hereby certify that this land surveying document was prepared and the related survey work was performed by me or under my direct personal supervision and that I am a duly licensed Land Surveyor under the laws of the State of Iowa.

Signed: Daniel J. Johnson Date: 2-27-03

Daniel J. Johnson, L.S. 1984
My license renewal date is December 31, 2004

Pages or sheets covered by this seal:
(Enter submission unless specified here)

1

REASON FOR PREPARING CERTIFICATE:

- A) THERE IS NO CERTIFICATE FOR THE CORNER ON FILE WITH THE RECORDER OF THE COUNTY IN WHICH THE CORNER IS LOCATED.
- B) CORNER POSITION DIFFERS FROM THAT SHOWN IN THE PUBLIC RECORDS OF THE COUNTY IN WHICH THE CORNER IS LOCATED.
- C) THE CORNER MONUMENT HAS BEEN REPLACED OR MODIFIED.
- D) THE REFERENCE TIES REFERRED TO IN AN EXISTING PUBLIC RECORD ARE INCORRECT OR MISSING.

SHEET TITLE: U.S. PUBLIC LAND SURVEY CORNER CERTIFICATE

PROJECT TITLE: Rickles - Plat of Survey



HALL AND HALL ENGINEERS, INC.
209 29TH STREET N.E.
CEDAR RAPIDS, IOWA 52402
(319) 362-9548

SCALE: NONE

F No: OT 51

P No: 6680

UNITED STATES PUBLIC LAND SURVEY CORNER CERTIFICATE

LAND SURVEY MONUMENTS SITUATED IN SECTION 17, TOWNSHIP 83
NORTH, RANGE 3 WEST OF THE 5TH P.M., JONES COUNTY, IOWA

CORNERS TO BE INDEXED

CORNER SECTION TOWNSHIP RANGE
EAST 1/4 17 83N 3W

OFFICE FILE NO.

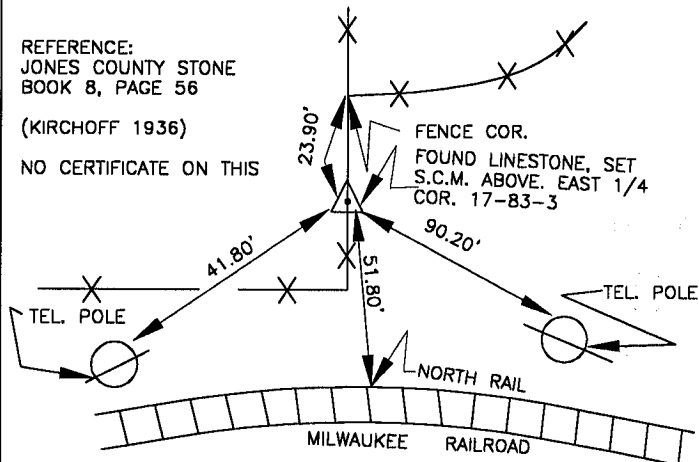
83317e_071601



REFERENCE:
JONES COUNTY STONE
BOOK 8, PAGE 56

(KIRCHOFF 1936)

NO CERTIFICATE ON THIS

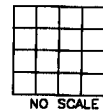


PREVIOUSLY RECORDED IN BOOK _____, PAGE _____
MONUMENT DESCRIPTION AND HOW ESTABLISHED FOUND LIMESTONE
WITH GRANITE STONE ALONGSIDE ON LINE WITH TIMBER EDGE TO EAST.
LOWERED STONE, SET S.C.M. ABOVE WITH TOP OF S.C.M. FLUSH WITH
GROUND. EAST 1/4 COR. SEC. 17, T83N, R3W, 5TH P.M., JONES
COUNTY, IOWA.

CORNERS TO BE INDEXED

CORNER SECTION TOWNSHIP RANGE

OFFICE FILE NO.

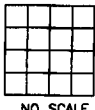


PREVIOUSLY RECORDED IN BOOK _____, PAGE _____
MONUMENT DESCRIPTION AND HOW ESTABLISHED _____

CORNERS TO BE INDEXED

CORNER SECTION TOWNSHIP RANGE

OFFICE FILE NO.

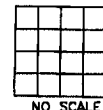


PREVIOUSLY RECORDED IN BOOK _____, PAGE _____
MONUMENT DESCRIPTION AND HOW ESTABLISHED _____

CORNERS TO BE INDEXED

CORNER SECTION TOWNSHIP RANGE

OFFICE FILE NO.



PREVIOUSLY RECORDED IN BOOK _____, PAGE _____
MONUMENT DESCRIPTION AND HOW ESTABLISHED _____

~~I hereby declare that this plat, survey or report was made by me or under my direct personal supervision and that I am a duly registered Land Surveyor under the laws of the State of Iowa.~~

Signed:

~~Joseph D. Tjepkes L.S. Iowa Reg. No. 14807
My Registration Renewal Date is December 31, 2002~~

SEAL

JONES COUNTY
ENGINEER'S OFFICE

19501 HWY. 64,
ANAMOSA, IOWA,
52205 (319)462-3785