

UNITED STATES PUBLIC LAND SURVEY CORNER CERTIFICATE

OF

Land Survey Monuments situated in Section 17, Township 83, Range 3, of the Fifth Principal Meridian, JONES County, Iowa. Previously recorded in _____ in County Recorder's Office.

(book, page, document number, etc.)

(Show reason for preparing this certificate, the evidence and detailed procedures used in establishing the corner positions and monumentation found or placed.)

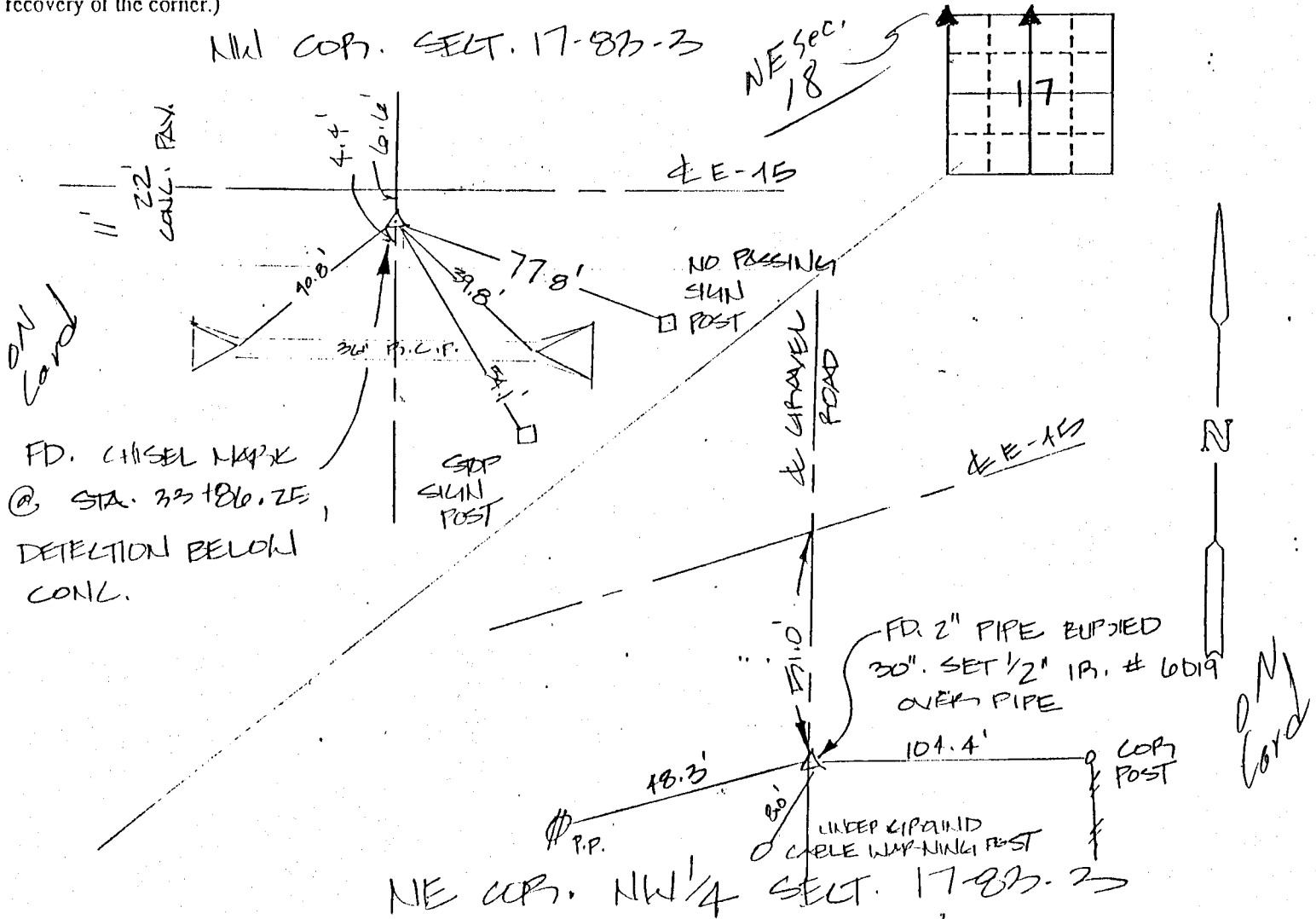
Monument Description and Remarks: THESE SECTIONS CORNERS WERE
LYED IN A PLAT OF SURVEY, PARCEL A, JONES COUNTY,
IOWA.

DALE WOODER

DAVE ACKERMAN

PLAN - VIEW

(Show a minimum of three reference ties to durable physical objects, relevant monuments and physical conditions that will enable recovery of the corner.)



I hereby certify that the survey work was completed and this certificate was prepared by me or under my direct personal supervision and that I am a duly-registered land surveyor under the laws of the state of Iowa.

Signature: Donald A. Thomas

Name typed or printed: _____
Date: 12-18-91 Reg. No. 6019

Corners	List Corners to be Indexed		
	Section	Twp	Range
NW	17	83	3
N 1/4 COR.	17	83	3



Rome