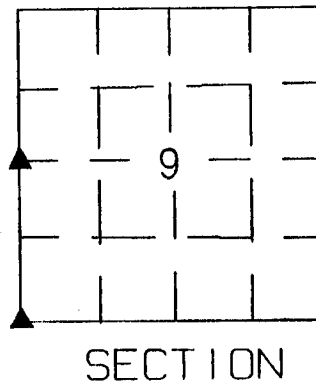
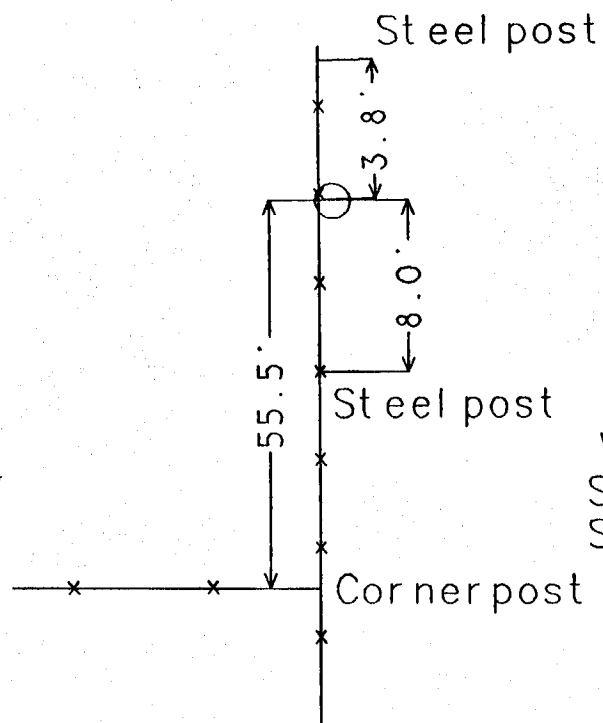


United States Public Land Survey Corner Certificate

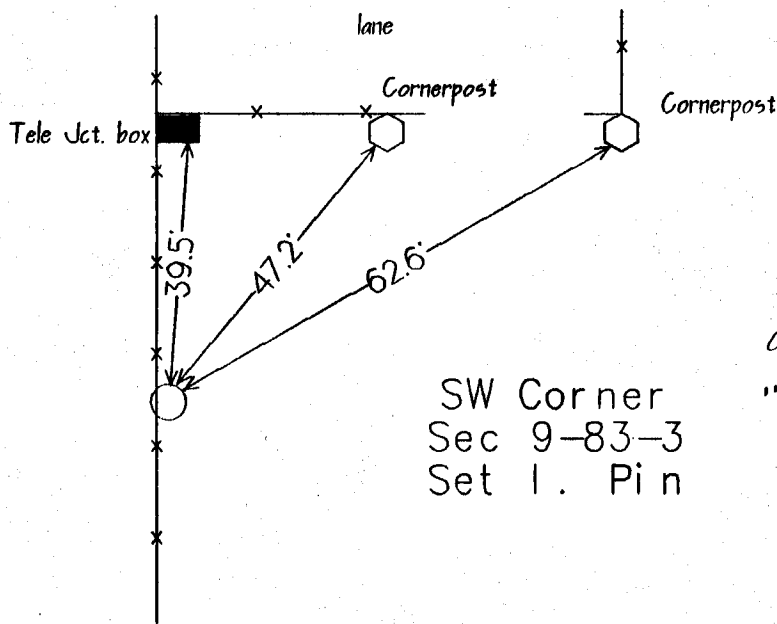
Land survey corner in Section 9 Township 83
North, Range 3 West of the 5th Principal Meridian
Jones County, Iowa.

No Scale



W 1/4 Cor
Sec 9-83-3
Set 1. Pin

ON Cord
"E 1/4 Cor. Sec. 8"
11-29-94



SW Corner
Sec 9-83-3
Set 1. Pin

ON Cord
"NE Cor. Sec. 17"
11-29-94

Certification

I hereby certify that this plot and survey was made by me or under my direct supervision and that I am a duly Registered Land Surveyor under the laws of the State of Iowa.

Harold E. Dillon
Harold E. Dillon Reg.#6581

7/14/94
date

