

Instrument #: 2018-3498
 12/31/2018 09:16:39 AM Total Pages: 1
 ZSC SECTION CORNER CERTIFICATE
 Recording Fee: \$7.00 Transfer Tax: \$0
 Sheri L. Jones, Recorder, Jones County Iowa



Prepared by & Return to: Herold - Reicks Surveying, 10 East Main Street, New Hampton, IA 50659, Ph. 641-394-2725

United States Public Land Survey Corner Certificate

Land Survey Monument situated in
 Section 7, Township 83 North, Range 3 West of the Fifth Principal Meridian, Jones County, Iowa.
 On file in Document #2003-1077 in the County Recorder's office.

This certificate is being prepared in compliance with Iowa Code Chapter 355.11 because:



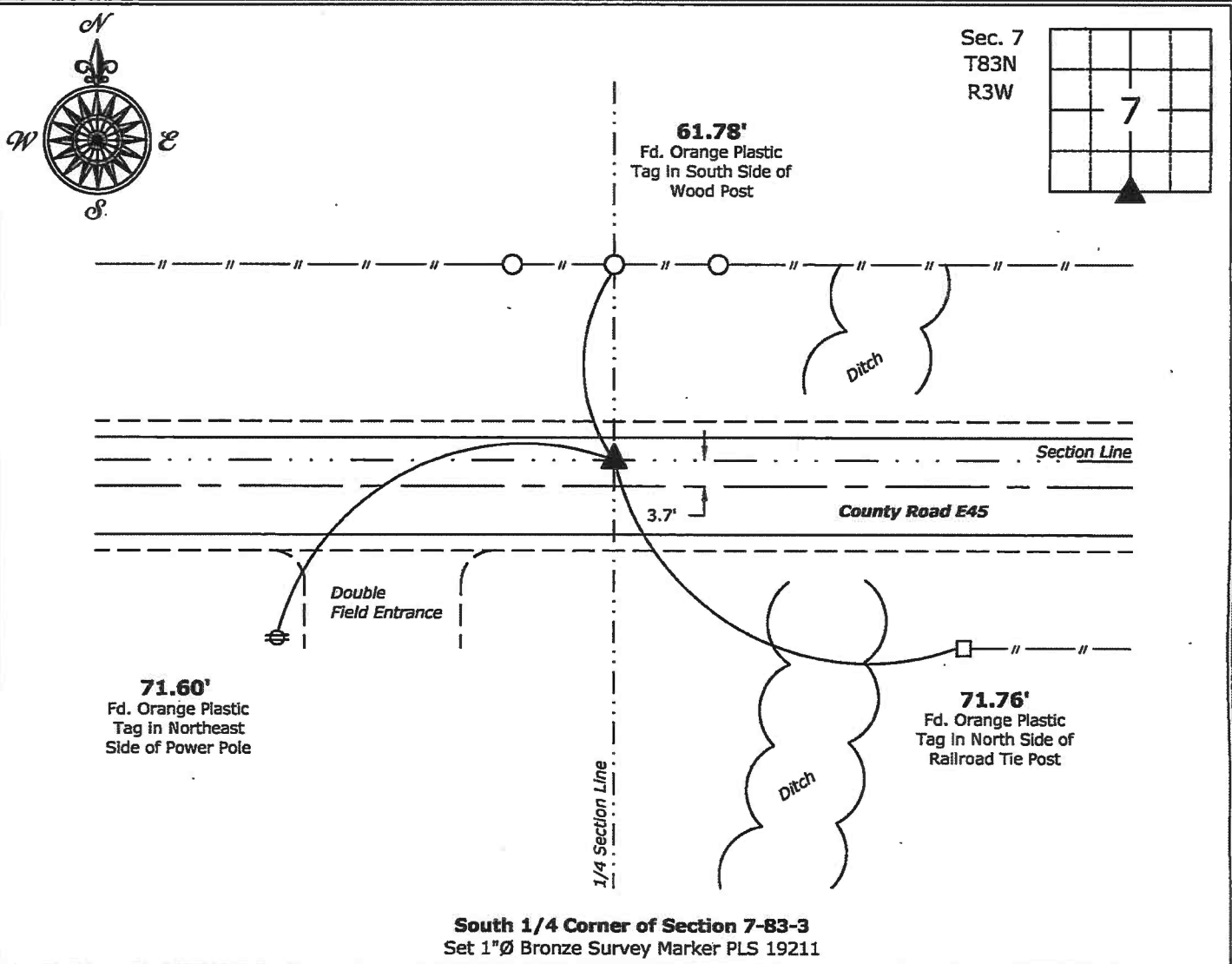
- There is no certificate on file for this corner.
- There are no longer three valid ties of record.
- There are changes to reference ties of record.
- There is change of monumentation of record.
- To clarify description of record monument (ties).

Monument Description and Remarks:

South 1/4 Corner: Found Cut "X" with information obtained from the previously recorded Section Corner Certificate. Reset with 1"Ø Bronze Survey Marker PLS 19211 with coordinates obtained prior to highway reconstruction. Corner being reset in conjunction with Project No. FM-TSF-CO53(86)--5B-53.

Plan View

(Show a minimum of three reference ties to durable physical objects, relevant monuments and physical conditions that will enable recovery of the corner.)



South 1/4 Corner of Section 7-83-3
 Set 1"Ø Bronze Survey Marker PLS 19211



I hereby certify that this land surveying document was prepared and the related survey work was performed by me or under my direct personal supervision and that I am a duly licensed Land Surveyor under the laws of the State of Iowa.

Kirk D. Reicks 12-27-18
 Kirk D. Reicks Date:

License number 19211
 My license renewal date is December 31, 2020.
 Sheets covered by this seal: Individual sheet only

List Corner to be Indexed

Corner	Section	Twp.	Range
S 1/4	7	83	3

Project Number: 2018-828

FB: 2018 Construction, Pgs. 13-15

2003 1077

FILED
RECORDERS OFFICE
JONES COUNTY IOWA

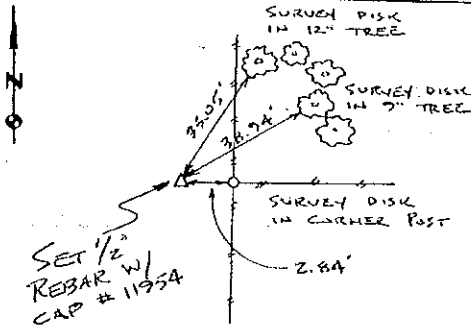
03 MAR 13 PM 1:22

MARIE KRUTZFIELD
RECORDER *600Pd*

PREPARED BY HALL & HALL ENGINEERS, INC. 209 29TH STREET N.E. CEDAR RAPIDS, IOWA 52402 (319) 362-9548

LAND SURVEY MONUMENTS SITUATED IN SECTION 7, TOWNSHIP 83 NORTH,
RANGE 3 WEST, OF THE FIFTH PRINCIPAL MERIDIAN, JONES COUNTY IOWA.

RECOVERY TIE DRAWING



MONUMENT DESCRIPTION AND REMARKS:

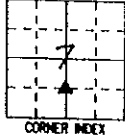
N.W. CORNER - SW-SE Section 7-83-3

REASON FOR PREPARING CERTIFICATE: (A) B, C OR D
PREVIOUS BOOK _____ PAGE _____

SET 1/2 REBAR W/ RED U.S. CAP
11954 FLUSH W/ SURFACE IN
LINE W/ FENCE EAST.

CORNER SET BY SPLITTING

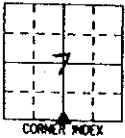
DISTANCE IN HALF ON A STRAIGHT
LINE BETWEEN CENTER AND S'4
CORNER SECTION 7



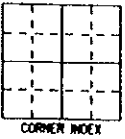
S'4 CORNER SECTION 7-83-3

REASON FOR PREPARING CERTIFICATE: (A) B, C OR D
PREVIOUS BOOK _____ PAGE _____

SET CUT 'X' NORTH OF E
E 45 IN LINE W/ DIVISION
POST NORTH AND WEST OF
FENCE SOUTH



REASON FOR PREPARING CERTIFICATE: A, B, C OR D
PREVIOUS BOOK _____ PAGE _____

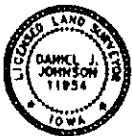


I hereby certify that this land surveying document was prepared and the related survey work was performed by me or under my direct personal supervision and that I am a duly licensed Land Surveyor under the laws of the State of Iowa.

Signed: *Daniel J. Johnson* Date: 2-27-03
Daniel J. Johnson, L.S. 11854

My license renewal date is December 31, 2004

Pages or sheets covered by this seal:
(Entire submission unless specified here) 1



REASON FOR PREPARING CERTIFICATE:

- A) THERE IS NO CERTIFICATE FOR THE CORNER ON FILE WITH THE RECORDER OF THE COUNTY IN WHICH THE CORNER IS LOCATED.
- B) CORNER POSITION DIFFERS FROM THAT SHOWN IN THE PUBLIC RECORDS OF THE COUNTY IN WHICH THE CORNER IS LOCATED.
- C) THE CORNER MONUMENT HAS BEEN REPLACED OR MODIFIED.
- D) THE REFERENCE TIES REFERRED TO IN AN EXISTING PUBLIC RECORD ARE INCORRECT OR MISSING.

SHEET NO: U.S. PUBLIC LAND SURVEY CORNER CERTIFICATE

PROJECT NO: IVAN BOWERS SURVEY

HALL AND HALL ENGINEERS, INC.
209 29TH STREET N.E.
CEDAR RAPIDS, IOWA 52402
(319) 362-9548

SCALE: NONE	P NO: <u>0T58</u>	P NO: <u>6955</u>
D W N R W B	C H R L R M	D P E 3/20/00

2002 3026

FILED
RECORDERS OFFICE
JONES COUNTY IOWA

8330TR-081602

8331BC-081602

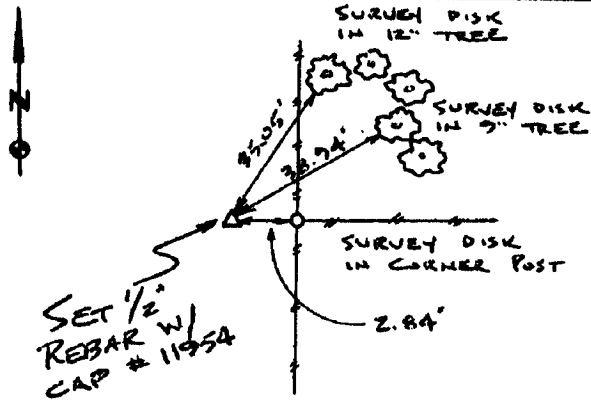
02 AUG 16 PM 12:52

MARIE KRUTZFIELD
RECORDER 6.00pd

PREPARED BY HALL & HALL ENGINEERS, INC. 209 29TH STREET N.E. CEDAR RAPIDS, IOWA 52402 (319) 362-9548

LAND SURVEY MONUMENTS SITUATED IN SECTION 7, TOWNSHIP 83 NORTH,
RANGE 3 WEST, OF THE FIFTH PRINCIPAL MERIDIAN, JONES COUNTY IOWA.

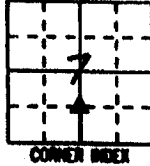
RECOVERY TIE DRAWING



MONUMENT DESCRIPTION AND REMARKS:

N.W. CORNER - SW-4E SECTION 7-83-3

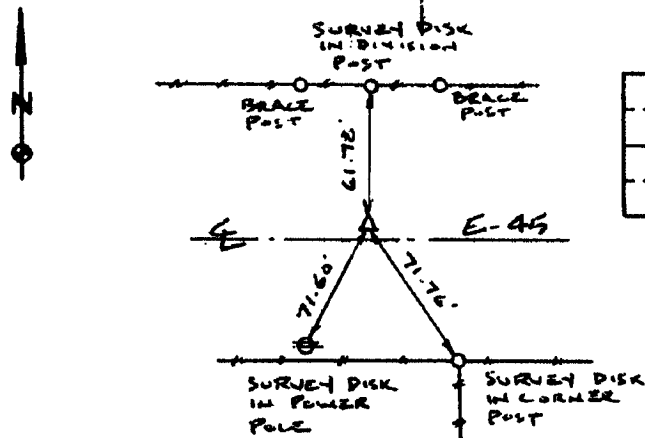
REASON FOR PREPARING CERTIFICATE: (A) B, C OR D
PREVIOUS BOOK _____, PAGE _____
SET 1/2" REBAR W/ RED L.S. CAP
11954 FLUSH W/ SURFACE IN
LINE W/ FENCE EAST.



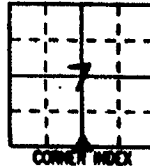
CORNER INDEX

CORNER SET BY SPLITTING
DISTANCE IN HALF ON A STRAIGHT
LINE BETWEEN CENTER AND S/4
CORNER SECTION 7

S/4 CORNER SECTION 7-83-3

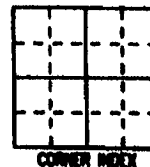


REASON FOR PREPARING CERTIFICATE: (A) B, C OR D
PREVIOUS BOOK _____, PAGE _____
SET CUT "X" NORTH OF E
E-45 IN LINE W/ DIVISION
POST NORTH AND WEST OF
FENCE SOUTH



CORNER INDEX

REASON FOR PREPARING CERTIFICATE: A, B, C OR D
PREVIOUS BOOK _____, PAGE _____



CORNER INDEX



I hereby certify that this land surveying document was prepared and the related survey work has performed by me or under my direct personal supervision and that I am a duly licensed Land Surveyor under the laws of the State of Iowa.

Signature: Daniel J. Johnson Date: 8-16-02

Daniel J. Johnson, L.S. 11954
My license renewal date is December 31, 2002

Pages or sheets covered by this cost:
(Entire submission unless specified here) 1/1

REASON FOR PREPARING CERTIFICATE:

- A) THERE IS NO CERTIFICATE FOR THE CORNER ON FILE WITH THE RECORDER OF THE COUNTY IN WHICH THE CORNER IS LOCATED.
- B) CORNER POSITION DIFFERS FROM THAT SHOWN IN THE PUBLIC RECORDS OF THE COUNTY IN WHICH THE CORNER IS LOCATED.
- C) THE CORNER MONUMENT HAS BEEN REPLACED OR MODIFIED.
- D) THE REFERENCE TIES REFERRED TO IN AN EXISTING PUBLIC RECORD ARE INCORRECT OR MISSING.

SHEET NO: U.S. PUBLIC LAND SURVEY CORNER CERTIFICATE

PROJECT NO: IVAN BOWERS SURVEY



HALL AND HALL ENGINEERS, INC.
209 29TH STREET N.E.
CEDAR RAPIDS, IOWA 52402
(319) 362-9548

DATE	RWB	SCALE	LRM	DATE	3/20/00	SCALE	NONE	FILE NO	0758	PROJECT NO	6955
------	-----	-------	-----	------	---------	-------	------	---------	------	------------	------

2003 1085

FILED
RECORDERS OFFICE
JONES COUNTY IOWA

03 MAR 13 PM 1:32

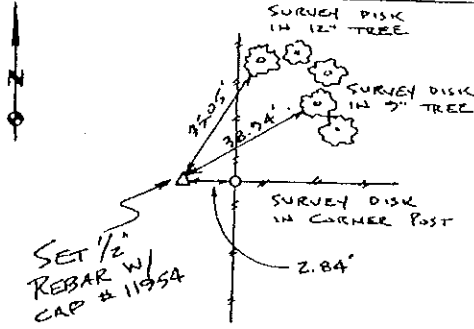
MARIE KRUTZFIELD
RECORDER 6.00 Pd

PREPARED BY HALL & HALL ENGINEERS, INC. 209 29TH STREET N.E. CEDAR RAPIDS, IOWA 52402 (319) 362-9548

LAND SURVEY MONUMENTS SITUATED IN SECTION 7, TOWNSHIP 83 NORTH,
RANGE 3 WEST, OF THE FIFTH PRINCIPAL MERIDIAN, JONES COUNTY IOWA.

RECOVERY TIE DRAWING

MONUMENT DESCRIPTION AND REMARKS:

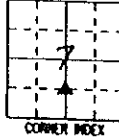


N.W. CORNER - SW-4E SECTION 7-83-3

REASON FOR PREPARING CERTIFICATE: (A, B, C OR D)
PREVIOUS BOOK _____, PAGE _____

SET 1/2 REBAR W/ RED L.S. CAP
11954 FLUSH W/ SURFACE IN
LINE W/ FENCE EAST.

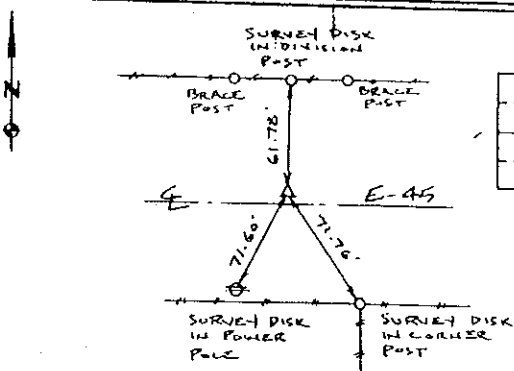
CORNER SET BY SPLITTING
DISTANCE IN HALF ON A STRAIGHT
LINE BETWEEN CENTER AND S4
CORNER SECTION 7



S4 CORNER SECTION 7-83-3

REASON FOR PREPARING CERTIFICATE: (A, B, C OR D)
PREVIOUS BOOK _____, PAGE _____

SET CUT 'X' NORTH OF E
E-45 IN LINE W/ DIVISION
POST NORTH AND WEST OF
FENCE SOUTH



REASON FOR PREPARING CERTIFICATE: A, B, C OR D
PREVIOUS BOOK _____, PAGE _____



I hereby certify that this land surveying document was prepared and the related survey work was performed by me or under my direct personal supervision and that I am a duly Licensed Land Surveyor under the laws of the State of Iowa.

Signed: Daniel J. Johnson Date: 12-7-00
Daniel J. Johnson, L.S. 11954
My License expires on December 31, 2000

Pages or sheets covered by this seal:
(Enter submission unless specified here)

REASON FOR PREPARING CERTIFICATE:

- A) THERE IS NO CERTIFICATE FOR THE CORNER ON FILE WITH THE RECORDER OF THE COUNTY IN WHICH THE CORNER IS LOCATED.
- B) CORNER POSITION DIFFERS FROM THAT SHOWN IN THE PUBLIC RECORDS OF THE COUNTY IN WHICH THE CORNER IS LOCATED.
- C) THE CORNER MONUMENT HAS BEEN REPLACED OR MODIFIED.
- D) THE REFERENCE TIES REFERRED TO IN AN EXISTING PUBLIC RECORD ARE INCORRECT OR MISSING.

SHEET NO. _____
PROJECT NAME: U.S. PUBLIC LAND SURVEY CORNER CERTIFICATE

PROJECT NAME: IVAN BOWERS SURVEY

HALL AND HALL ENGINEERS, INC.
209 29TH STREET N.E.
CEDAR RAPIDS, IOWA 52402
(319) 362-9548

OWNER: <u>RWB</u>	CLIENT: <u>LRM</u>	DATE: <u>3/20/00</u>	SCALE: <u>NONE</u>	FIG. NO.: <u>0758</u>	SHEET NO.: <u>6955</u>
-------------------	--------------------	----------------------	--------------------	-----------------------	------------------------