

Instrument #: 2018-3499
 12/31/2018 09:16:39 AM Total Pages: 1
 ZSC SECTION CORNER CERTIFICATE
 Recording Fee: \$7.00 Transfer Tax: \$0
 Sheri L. Jones, Recorder, Jones County Iowa



Prepared by & Return to: Herald - Reicks Surveying, 10 East Main Street, New Hampton, IA 50659, Ph. 641-394-2725

United States Public Land Survey Corner Certificate

Land Survey Monument situated in
 Section 7, Township 83 North, Range 3 West of the Fifth Principal Meridian, Jones County, Iowa.
 On file in Document #2003-1084 in the County Recorder's office.

This certificate is being prepared in compliance with Iowa Code Chapter 355.11 because:



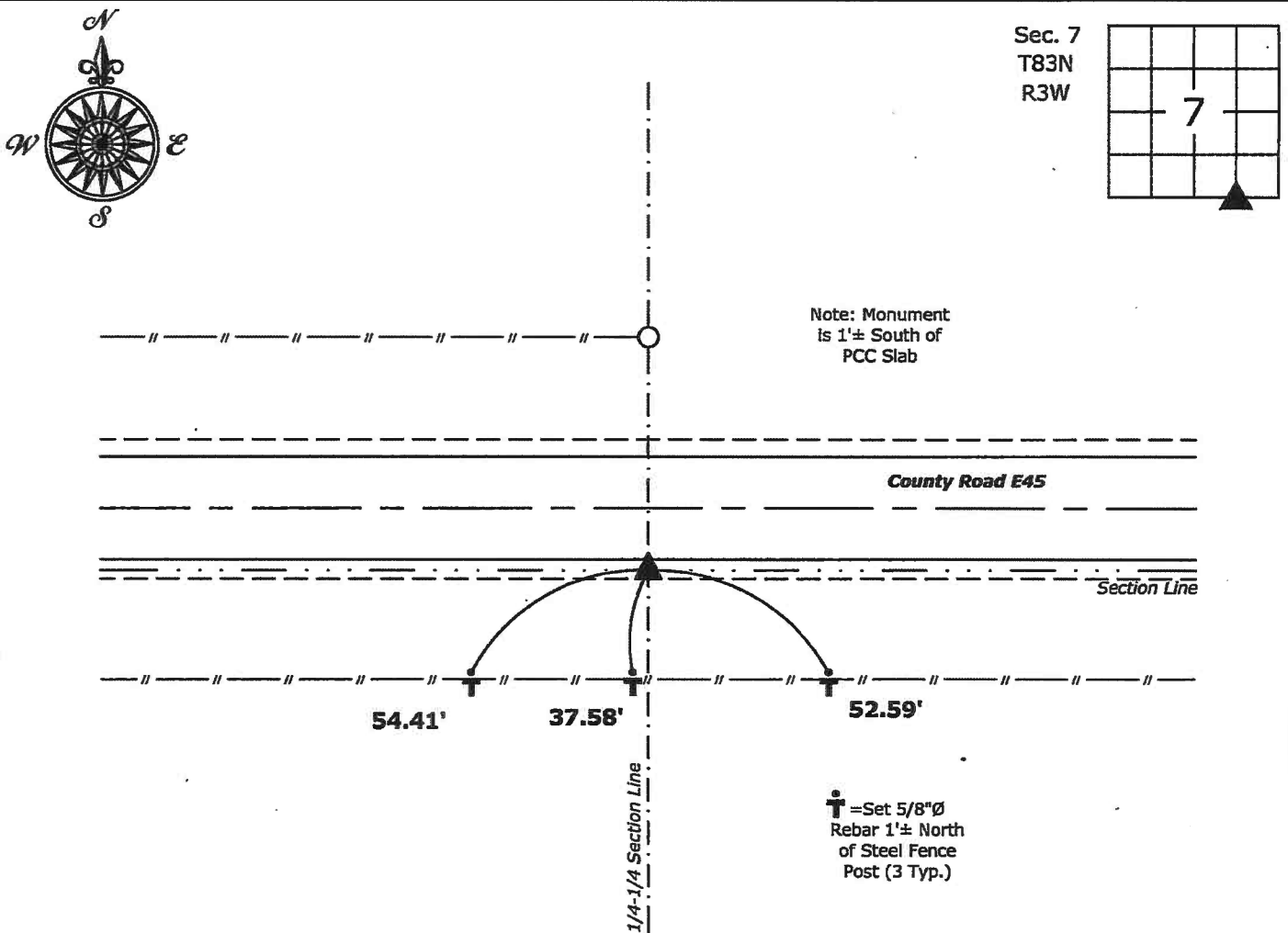
- There is no certificate on file for this corner.
- There are no longer three valid ties of record.
- There are changes to reference ties of record.
- There is change of monumentation of record.
- To clarify description of record monument (ties).

Monument Description and Remarks:

Southeast Corner SW 1/4-SE 1/4: Found 1/2"Ø rebar with red plastic cap PLS 11954 with information obtained from the previously recorded Section Corner Certificate. Reset with 5/8"Ø rebar with 2"Ø aluminum cap PLS 19211 with coordinates obtained prior to highway reconstruction. Corner being reset in conjunction with Project No. FM-TSF-CO53(86)--5B-53.

Plan View

(Show a minimum of three reference ties to durable physical objects, relevant monuments and physical conditions that will enable recovery of the corner.)



Note: Monument is 1'± South of PCC Slab

County Road E45

Section Line

54.41'

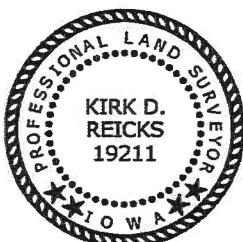
37.58'

52.59'

1/4-1/4 Section Line

† = Set 5/8"Ø Rebar 1'± North of Steel Fence Post (3 Typ.)

Southeast Corner SW 1/4-SE 1/4 of Section 7-83-3
 Set 5/8"Ø rebar w/2"Ø aluminum cap PLS 19211



I hereby certify that this land surveying document was prepared and the related survey work was performed by me or under my direct personal supervision and that I am a duly licensed Land Surveyor under the laws of the State of Iowa.

Kirk D. Reicks 12-27-18
 Kirk D. Reicks Date:

License number 19211
 My license renewal date is December 31, 2020.
 Sheets covered by this seal: Individual sheet only

List Corner to be Indexed

Corner	Section	Twp.	Range
SE-SW-SE	7	83	3

Project Number: 2018-828

FB: 2018 Construction, Pgs. 13-15

2003 1084

FILED
RECORDERS OFFICE
JONES COUNTY IOWA

03 MAR 13 PM 1:31

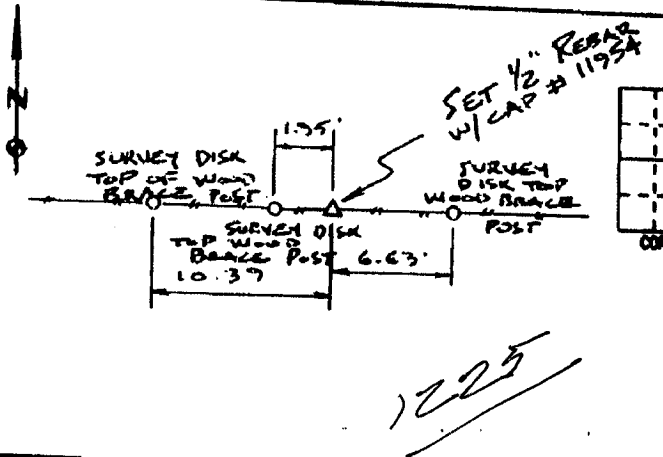
MARIE KRUTZFIELD
RECORDER 6.00Pd

PREPARED BY HALL & HALL ENGINEERS, INC. 209 29TH STREET N.E. CEDAR RAPIDS, IOWA 52402 (319) 362-9548

LAND SURVEY MONUMENTS SITUATED IN SECTION 7, TOWNSHIP 83 NORTH,
RANGE 3 WEST, OF THE FIFTH PRINCIPAL MERIDIAN, JONES COUNTY IOWA.

RECOVERY TIE DRAWING

MONUMENT DESCRIPTION AND REMARKS:

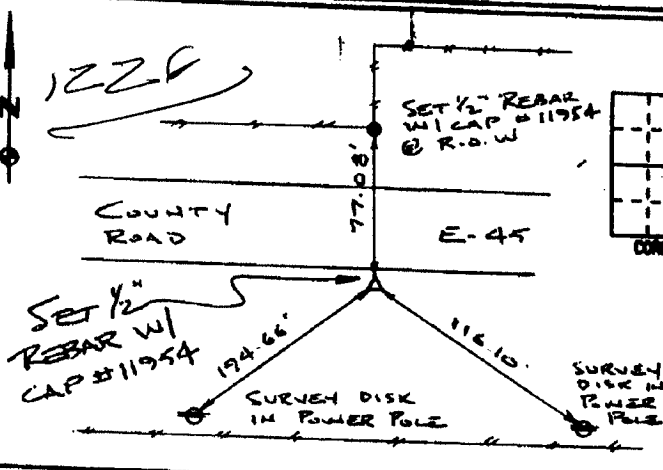


N.E. CORNER - SW-SE SECTION 7-83-3

REASON FOR PREPARING CERTIFICATE: (A, B, C OR D)
PREVIOUS BOOK _____, PAGE _____

SET 1/2" REBAR W/ RED L.S.
CAP # 11954 FLUSH W/
SURFACE ON EAST-WEST FENCE
2' EAST OF DIVISION POST

83307s-120700

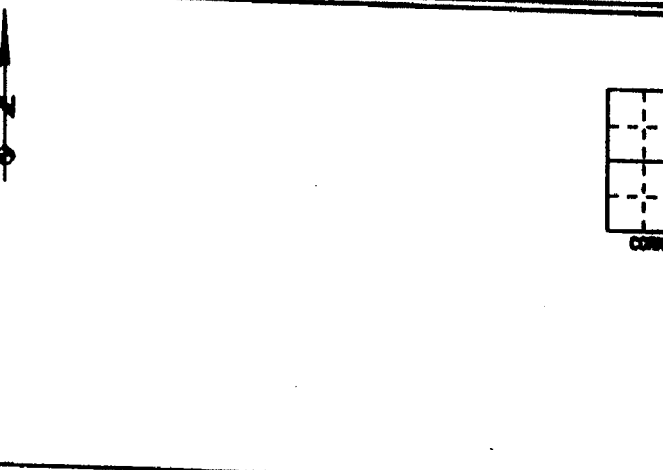


SE CORNER - SW-SE SECTION 7-83-3

REASON FOR PREPARING CERTIFICATE: (A, B, C OR D)
PREVIOUS BOOK _____, PAGE _____

SET 1/2" REBAR W/ RED L.S.
CAP # 11954 2" BELOW
SURFACE ON SOUTH SHOULDER
COUNTY ROAD E-45 1' OFF
EDGE OF SLAB

83318d-120700



REASON FOR PREPARING CERTIFICATE: A, B, C OR D
PREVIOUS BOOK _____, PAGE _____



I hereby certify that this land surveying document was prepared and the related survey work was performed by me or under my direct personal supervision and that I am a duly licensed Land Surveyor under the laws of the State of Iowa.

Signed: *[Signature]* Date: 12-7-00

Daniel J. Johnson, L.S. 11854
My license renewal date is December 31, 2000

Pages or sheets covered by this seal:
(Entire submission unless specified here)

REASON FOR PREPARING CERTIFICATE:

- A) THERE IS NO CERTIFICATE FOR THE CORNER ON FILE WITH THE RECORDER OF THE COUNTY IN WHICH THE CORNER IS LOCATED.
- B) CORNER POSITION DIFFERS FROM THAT SHOWN IN THE PUBLIC RECORDS OF THE COUNTY IN WHICH THE CORNER IS LOCATED.
- C) THE CORNER MONUMENT HAS BEEN REPLACED OR MODIFIED.
- D) THE REFERENCE TIES REFERRED TO IN AN EXISTING PUBLIC RECORD ARE INCORRECT OR MISSING.

SHEET NO: U.S. PUBLIC LAND SURVEY CORNER CERTIFICATE

PROJECT NO: IVAN BOWERS SURVEY

HALL AND HALL ENGINEERS, INC.
209 29TH STREET N.E.
CEDAR RAPIDS, IOWA 52402
(319) 362-9548

D W R W B	E C K L R M	A D P R	D O C E 3/20/00	S C A L E NONE	F N O OT 58	F R O J 6755
-----------------------	----------------------------	------------------	-----------------------------	-------------------------------	----------------------	--------------------------