

Instrument #: 2018-3500  
 12/31/2018 09:16:39 AM Total Pages: 1  
 ZSC SECTION CORNER CERTIFICATE  
 Recording Fee: \$7.00 Transfer Tax: \$0  
 Sheri L. Jones, Recorder, Jones County Iowa



Prepared by & Return to: Herold - Reicks Surveying, 10 East Main Street, New Hampton, IA 50659, Ph. 641-394-2725

## United States Public Land Survey Corner Certificate

Land Survey Monument situated in  
 Section 7, Township 83 North, Range 3 West of the Fifth Principal Meridian, Jones County, Iowa.  
 On file in Document #2016-0336 in the County Recorder's office.

This certificate is being prepared in compliance with Iowa Code Chapter 355.11 because:



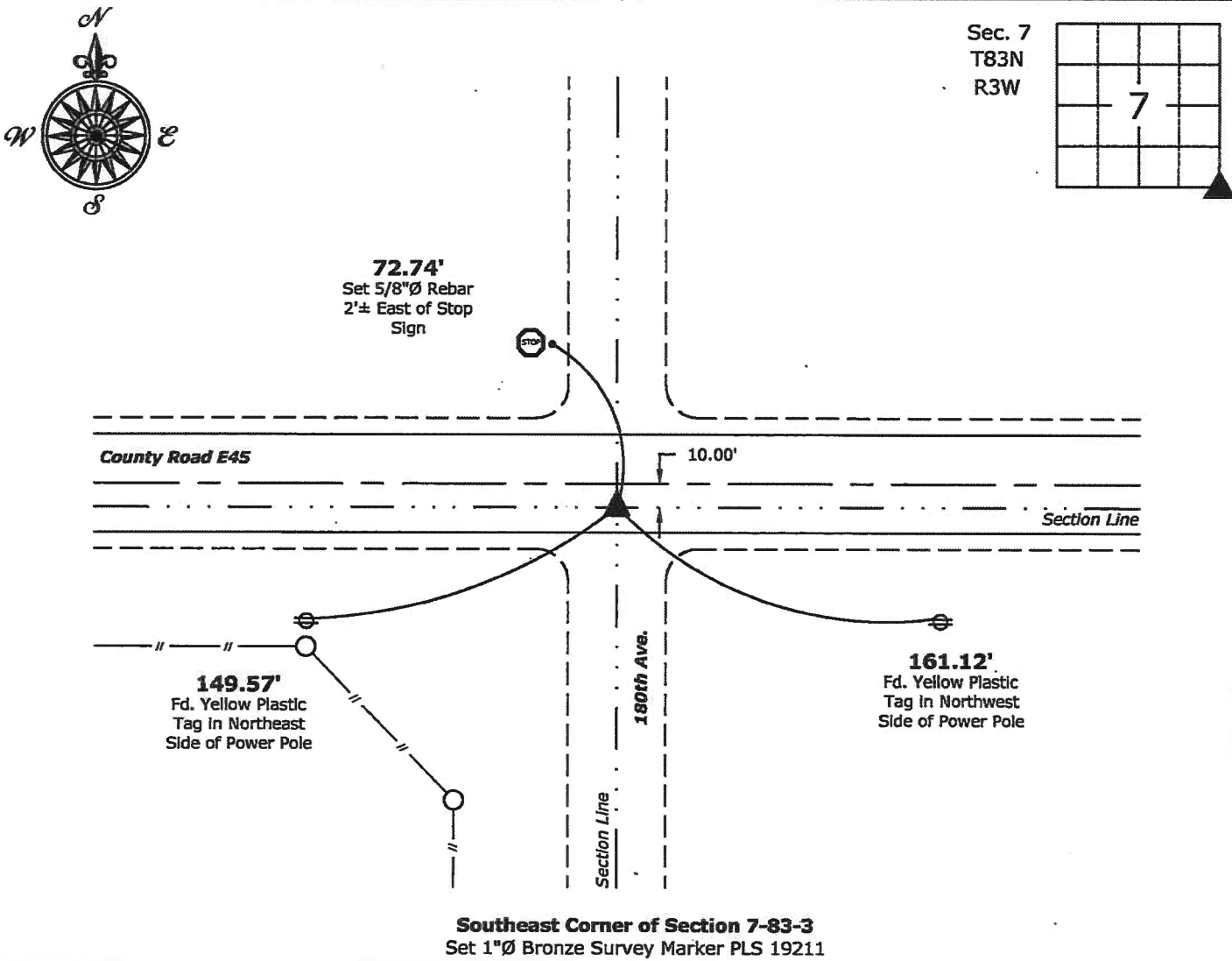
- There is no certificate on file for this corner.
- There are no longer three valid ties of record.
- There are changes to reference ties of record.
- There is change of monumentation of record.
- To clarify description of record monument (ties).

### Monument Description and Remarks:

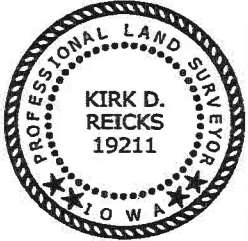
**Southeast Corner:** Found 5/8"Ø rebar with information obtained from the previously recorded Section Corner Certificate. Reset with 1"Ø Bronze Survey Marker PLS 19211 with coordinates obtained prior to highway reconstruction. Corner being reset in conjunction with Project No. FM-TSF-CO53(86)--5B-53.

### Plan View

(Show a minimum of three reference ties to durable physical objects, relevant monuments and physical conditions that will enable recovery of the corner.)



**Southeast Corner of Section 7-83-3**  
 Set 1"Ø Bronze Survey Marker PLS 19211



I hereby certify that this land surveying document was prepared and the related survey work was performed by me or under my direct personal supervision and that I am a duly licensed Land Surveyor under the laws of the State of Iowa.

*Kirk D. Reicks* 12-27-18  
 Kirk D. Reicks Date:

License number 19211  
 My license renewal date is December 31, 2020.  
 Sheets covered by this seal: Individual sheet only

List Corner to be Indexed			
Corner	Section	Twp.	Range
SE	7	83	3

Project Number: 2018-828  
 FB: 2018 Construction, Pgs. 13-15

Instrument #: 2016-0336  
 02/05/2016 12:11:33 PM Total Pages: 1  
 ZSC SECTION CORNER CERTIFICATE  
 Recording Fee: \$7.00 Transfer Tax: \$0  
 Sheri L. Jones, Recorder, Jones County Iowa



PREPARED BY: RANDALL L. RATTENBORG 105 WEST MAIN STREET MANCHESTER, IA 52057, 563-927-2434

# UNITED STATES PUBLIC LAND SURVEY CORNER CERTIFICATE

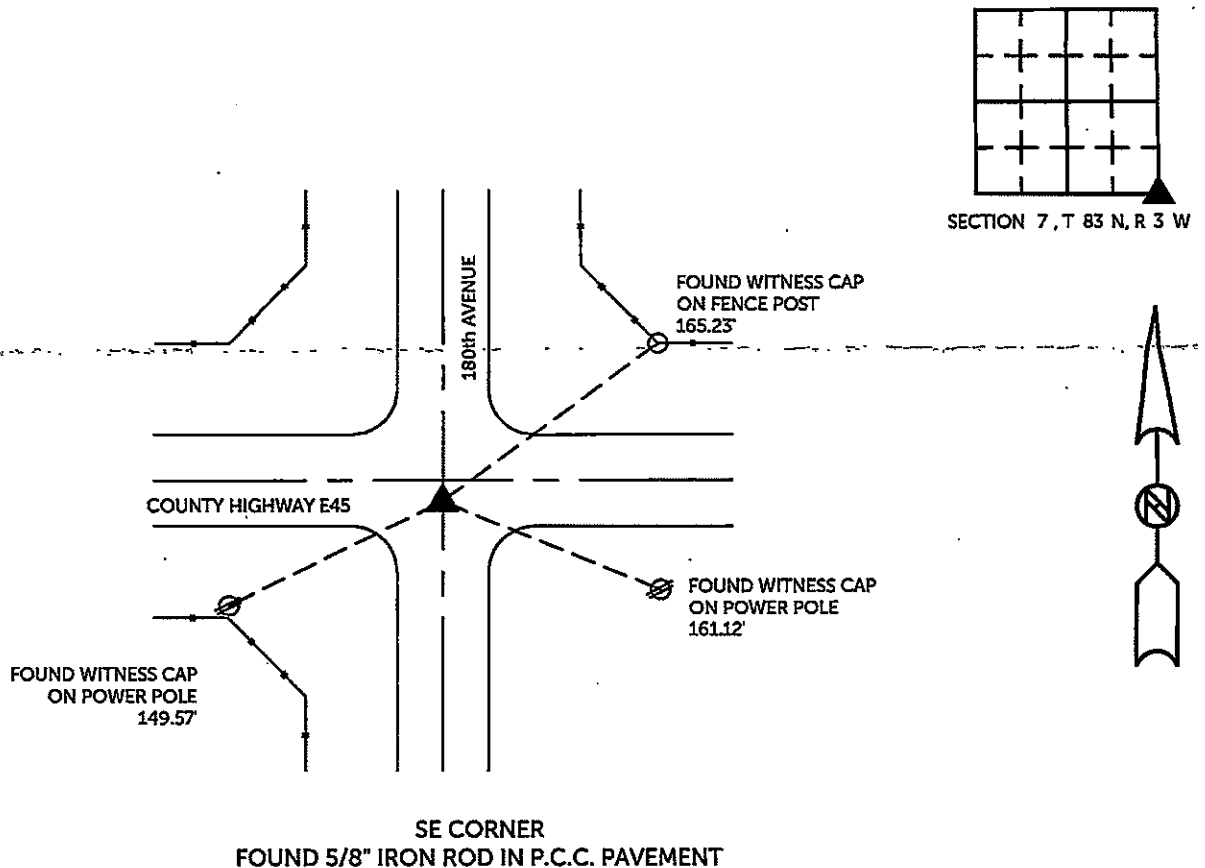
Land Survey Monuments situated in Section 7, Township 83 North, Range 3 West of the Fifth Principal Meridian,  
Jones County, Iowa.

Previously recorded in County Recorder's Office in Not Recorded  
(book, page, document number, etc.)

SE CORNER. Found 5/8" iron rod in P.C.C. Pavement 10' south of centerline.

## PLAN VIEW

(Show a minimum of three reference ties to durable physical objects, relevant monuments and physical conditions that will enable recovery of the corner.)

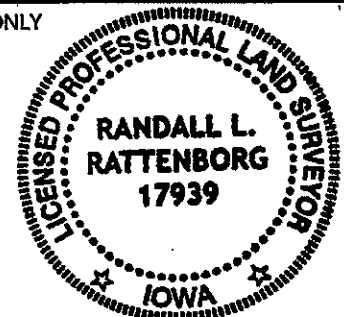


TIES ARE TO PLAT PARCEL 2016-09  
 IN SECTION 7, T 83 N, R 3 W

BURRINGTON GROUP, INC. PROJECT NO. 15-129

I HEREBY CERTIFY THAT THIS LAND SURVEYING DOCUMENT  
 WAS PREPARED AND THE RELATED SURVEY WORK WAS  
 PERFORMED BY ME OR UNDER MY DIRECT PERSONAL  
 SUPERVISION AND THAT I AM A DULY LICENSED PROFESSIONAL  
 LAND SURVEYOR UNDER THE LAWS OF THE STATE OF IOWA.

SEAL COVERS THIS SHEET ONLY



*[Signature]* 2/4/16  
 Randall L. Rattenborg, P.L.S. License #17939 Date  
 My license renewal date is December 31, 2017  
 List Corners to be Indexed: Section Township Range  
 SE Corner 7 T 83N R 3 W

**BURRINGTON GROUP, INC.**  
 Civil Engineering | Land Surveying  
 105 W. Main Street Manchester, Iowa 52057

2001 3966

FILED  
RECORDERS OFFICE  
JONES COUNTY IOWA

01 NOV 16 AM 11:49

MARIE KRUTZFIELD  
RECORDER No Fee

83318e-11/201  
ID # 566

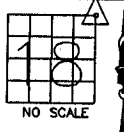
J.D. Tjepkes, L.S. JONES COUNTY ENGINEER'S OFFICE, 19501 HWY. 64, ANAMOSA, IOWA, 52205 (319)462-3785

# UNITED STATES PUBLIC LAND SURVEY CORNER CERTIFICATE

LAND SURVEY MONUMENTS SITUATED IN SECTION 18, TOWNSHIP 83  
NORTH, RANGE 3 WEST OF THE 5TH P.M., JONES COUNTY, IOWA

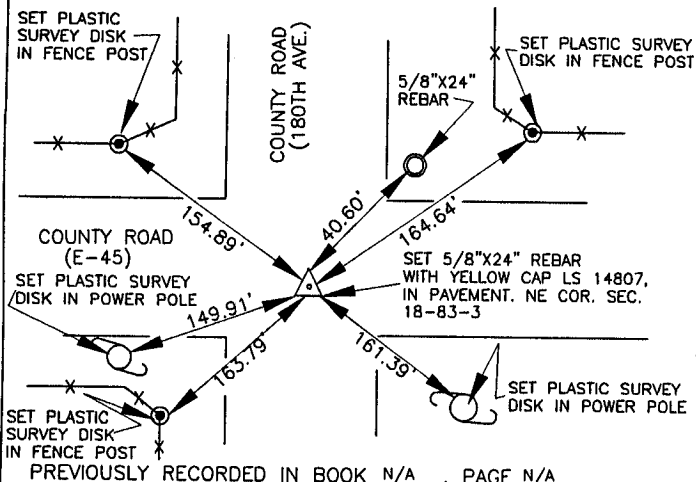
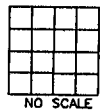
### CORNERS TO BE INDEXED

CORNER SECTION TOWNSHIP RANGE  
NORTHEAST 18 83N 3W  
OFFICE FILE NO. 83318e\_092001



### CORNERS TO BE INDEXED

CORNER SECTION TOWNSHIP RANGE  
OFFICE FILE NO.

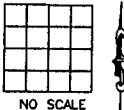


PREVIOUSLY RECORDED IN BOOK N/A, PAGE N/A  
FD. CROSS IN PAVEMENT AT STA. 33+86, 6.6' RT. DONALD THOMAS USED THIS COR. FOR PLAT OF SURVEY & FILED TIES WITH JONES COUNTY ENGINEER. DRILLED HOLE, SET 5/8"X24" REBAR WITH CAP LS 14807 IN PLACE OF CROSS. SET REFERENCE PTS. AND TIED OUT AS INDICATED. NE. COR. SEC. 18, T83N, R3W, 5TH P.M., JONES COUNTY, IOWA

PREVIOUSLY RECORDED IN BOOK \_\_\_\_\_, PAGE \_\_\_\_\_  
MONUMENT DESCRIPTION AND HOW ESTABLISHED \_\_\_\_\_  
\_\_\_\_\_  
\_\_\_\_\_

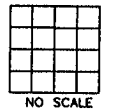
### CORNERS TO BE INDEXED

CORNER SECTION TOWNSHIP RANGE  
OFFICE FILE NO.



### CORNERS TO BE INDEXED

CORNER SECTION TOWNSHIP RANGE  
OFFICE FILE NO.



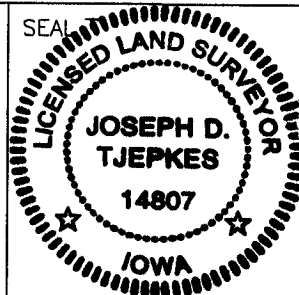
PREVIOUSLY RECORDED IN BOOK \_\_\_\_\_, PAGE \_\_\_\_\_  
MONUMENT DESCRIPTION AND HOW ESTABLISHED \_\_\_\_\_  
\_\_\_\_\_  
\_\_\_\_\_

PREVIOUSLY RECORDED IN BOOK \_\_\_\_\_, PAGE \_\_\_\_\_  
MONUMENT DESCRIPTION AND HOW ESTABLISHED \_\_\_\_\_  
\_\_\_\_\_  
\_\_\_\_\_

I hereby declare that this plat, survey or report was made by me or under my direct personal supervision and that I am a duly registered Land Surveyor under the laws of the State of Iowa.

Signed [Signature] 11.12.01

Joseph D. Tjepkes L.S. Iowa Reg. No. 14807  
My Registration Renewal Date is December 31, 2002



J.D. Tjepkes LS 14807  
JONES COUNTY  
ENGINEER'S OFFICE

19501 HWY. 64,  
ANAMOSA, IOWA,  
52205 (319)462-3785

UNITED STATES PUBLIC LAND SURVEY CORNER CERTIFICATE

OF

Land Survey Monuments situated in Section 17, Township 83, Range 3, of the Fifth Principal Meridian, JONES County, Iowa. Previously recorded in \_\_\_\_\_ in County Recorder's Office.

(book, page, document number, etc.)

(Show reason for preparing this certificate, the evidence and detailed procedures used in establishing the corner positions and monumentation found or placed.)

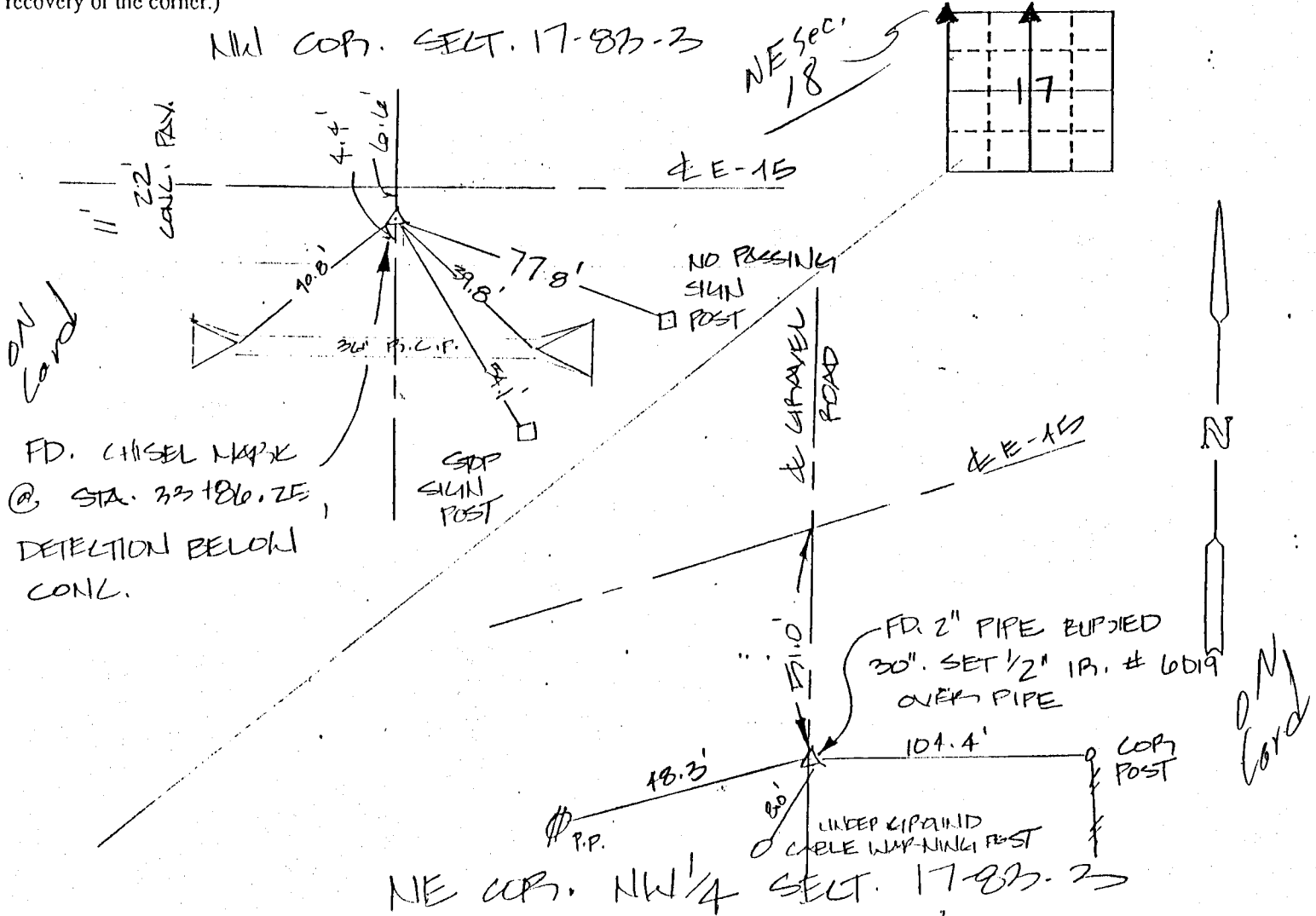
Monument Description and Remarks: THESE SECTIONS CORNERS WERE  
LYED IN A PLAT OF SURVEY, PARCEL A, JONES COUNTY,  
IOWA.

DALE WOODER

DAVE ACKERMAN

PLAN - VIEW

(Show a minimum of three reference ties to durable physical objects, relevant monuments and physical conditions that will enable recovery of the corner.)



I hereby certify that the survey work was completed and this certificate was prepared by me or under my direct personal supervision and that I am a duly-registered land surveyor under the laws of the state of Iowa.

Signature: Donald A. Thomas

Name typed or printed: \_\_\_\_\_  
Date: 12-18-91 Reg. No. 6019

Corners	List Corners to be Indexed		
	Section	Twp	Range
NW	17	83	3
N 1/4 COR.	17	83	3



Rome