

UNITED STATES PUBLIC LAND SURVEY CORNER CERTIFICATE

Land Survey Monuments situated in Section 36, Township 84N, Range 3W, of the Fifth Principal Meridian, Jones County, Iowa. Previously recorded in N/A in the Office of the County Recorder

Monument Description and Remarks: (No Corner Certificates found at the County Recorders Office)

NW CORNER SE1/4 SW1/4 - SET 1/2" IRON ROD W/YELLOW LS CAP #12642 - RUN STRAIGHT LINES FROM OPPOSITE 1/4 1/4 CORNERS AND SET AT POINT OF INTERSECTION

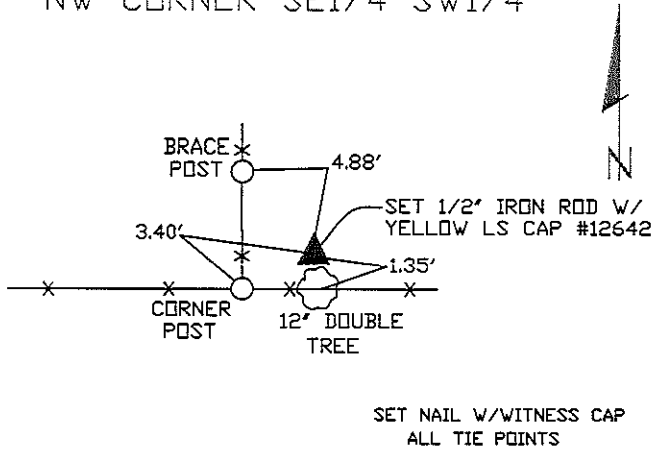
NE CORNER SE1/4 SW1/4 - SET 1/2" IRON ROD W/YELLOW LS CAP #12642 - SET ON LINE AND MIDWAY BETWEEN THE CENTER OF SECTION AND THE S1/4 CORNER

SW CORNER SE1/4 SW1/4 - SET 1/2" IRON ROD W/YELLOW LS CAP #12642 - SET ON LINE AND MIDWAY BETWEEN THE SW CORNER AND THE S1/4 CORNER

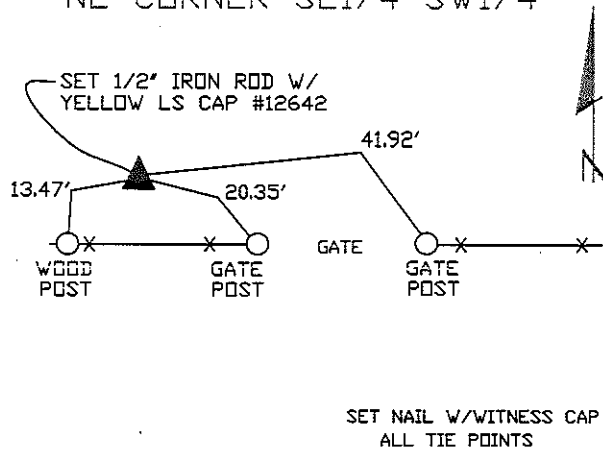
S1/4 CORNER - SET 1/2" IRON ROD W/YELLOW LS CAP #12642 - SET ON LINE AND MIDWAY BETWEEN THE SW CORNER AND THE SE CORNER

PLAN VIEW

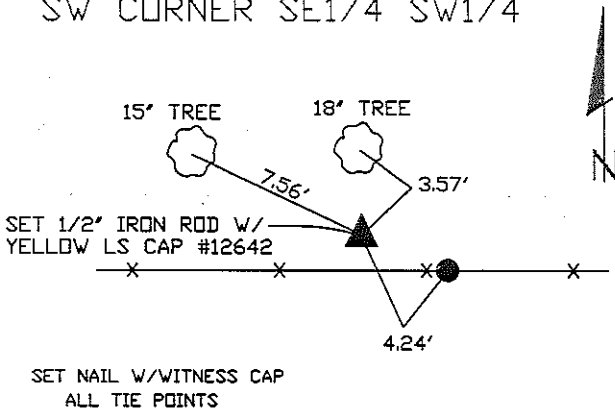
NW CORNER SE1/4 SW1/4



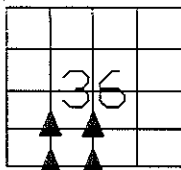
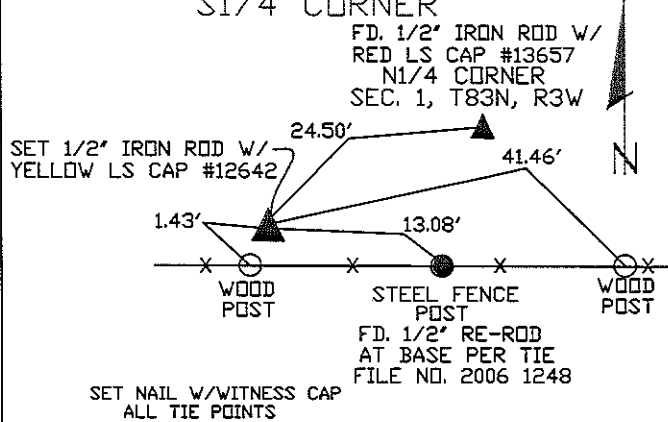
NE CORNER SE1/4 SW1/4



SW CORNER SE1/4 SW1/4



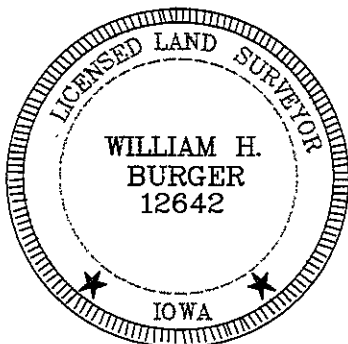
S1/4 CORNER



SEC. 36 TWP. 84N RANGE 3W

CORNERS TO BE INDEXED

NW CORNER SE1/4 SW1/4	36	84N	3W
NE CORNER SE1/4 SW1/4	36	84N	3W
SW CORNER SE1/4 SW1/4	36	84N	3W
S1/4 CORNER	36	84N	3W



I hereby certify that this land surveying document was prepared and related survey work was performed by me or under my direct personal supervision and that I am a duly licensed Land Surveyor under the laws of the State of Iowa.

William H. Burger 10/29/10
 William H. Burger Date

License number 12642

My license renewal date is December 31, 2010

Pages or Sheets covered by this seal: Sheet 1 of 1