

2001 3967
 FILED
 RECORDERS OFFICE
 JONES COUNTY IOWA
 01 NOV 16 AM 11:50
 MARIE KRUTZFIELD
 RECORDER No Fee

833230-110901
 ID# 1013

J.D. TJEPKES, LS. JONES COUNTY ENGINEER'S OFFICE, 19501 HWY. 64, ANAMOSA, IOWA, 52205 (319)462-3785

UNITED STATES PUBLIC LAND SURVEY CORNER CERTIFICATE

LAND SURVEY MONUMENTS SITUATED IN SECTION 23, TOWNSHIP 83
 NORTH, RANGE 3 WEST OF THE 5TH P.M., JONES COUNTY, IOWA

CORNERS TO BE INDEXED

CORNER	SECTION	TOWNSHIP	RANGE
EAST 1/4	23	83N	3W

OFFICE FILE NO. 833230-110901

PREVIOUSLY RECORDED IN BOOK N/A, PAGE N/A
 MONUMENT DESCRIPTION AND HOW ESTABLISHED FOUND TWO LIMESTONES BURIED 18" BELOW SURFACE UNDER EXISTING FENCE LINE AT PROPORTIONATE DISTANCE FROM SOUTHEAST CORNER SECTION 23 TO NORTHEAST CORNER SECTION 23. LIMESTONES MEASURED 4"x4"x11" & 3"x4"x8". SET 5/8"x48" REBAR WITH YELLOW CAP LS 14807 ALONGSIDE 2 LIMESTONES, EAST 1/4 SEC. 23, T83N, R3W, AND TIED OUT AS INDICATED. EAST QUARTER CORNER SECTION 23, T83N, R3W, 5TH P.M., JONES COUNTY, IOWA.

CORNERS TO BE INDEXED

CORNER	SECTION	TOWNSHIP	RANGE

OFFICE FILE NO. _____

PREVIOUSLY RECORDED IN BOOK _____, PAGE _____
 MONUMENT DESCRIPTION AND HOW ESTABLISHED _____

CORNERS TO BE INDEXED

CORNER	SECTION	TOWNSHIP	RANGE

OFFICE FILE NO. _____

PREVIOUSLY RECORDED IN BOOK _____, PAGE _____
 MONUMENT DESCRIPTION AND HOW ESTABLISHED _____

CORNERS TO BE INDEXED

CORNER	SECTION	TOWNSHIP	RANGE

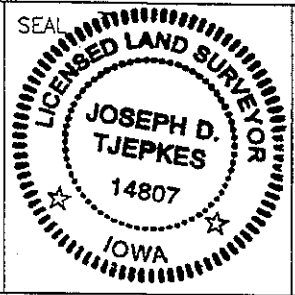
OFFICE FILE NO. _____

PREVIOUSLY RECORDED IN BOOK _____, PAGE _____
 MONUMENT DESCRIPTION AND HOW ESTABLISHED _____

I hereby declare that this plat, survey or report was made by me or under my direct personal supervision and that I am a duly registered Land Surveyor under the laws of the State of Iowa.

Signed: *[Signature]* 11-09-01

Joseph D. Tjepkes L.S. Iowa Reg. No. 14807
 My Registration Renewal Date is December 31, 2002



J.D. TJEPKES LS 14807
 JONES COUNTY
 ENGINEER'S OFFICE

19501 HWY. 64,
 ANAMOSA, IOWA,
 52205 (319)462-3785

UNITED STATES PUBLIC LAND SURVEY CORNER CERTIFICATE

LAND SURVEY MONUMENTS SITUATED IN SECTION 23, TOWNSHIP 83
NORTH, RANGE 3 WEST OF THE 5TH P.M., JONES COUNTY, IOWA

1012 CORNERS TO BE INDEXED

CORNER	SECTION	TOWNSHIP	RANGE
CENTER	23	83N	3W

OFFICE FILE NO. 83323m_071901

REFERENCE:
JONES COUNTY BOOK 281, PAGE 52

CL COUNTY ROAD
35TH STREET
14.0'

145TH AVE.
6.17'

86.20'

83.25'

44.95'

NAILS TOP PIPE

SET IRON PIN PER SECTION CROSS. CENTER SECTION 23-83-3

BM SPK. IN POWER POLE

NO CERTIFICATE ON THIS INFORMATION PER JONES COUNTY SURVEY CREW. 3-25-81 POSTEL-WOOD-POWELL

PREVIOUSLY RECORDED IN BOOK N/A, PAGE N/A. MONUMENT DESCRIPTION AND HOW ESTABLISHED RESET IRON PIN AFTER 1981 ROAD CONST. -11-6-81. SET CENTER BY INTERSECT-LINES FROM OPPOSING QUARTER CORNERS, CENTER SECTION 23, TOWNSHIP 83 NORTH, RANGE 3 WEST, 5TH PRINCIPAL MERIDIAN, JONES COUNTY, IOWA.

1013 CORNERS TO BE INDEXED

CORNER	SECTION	TOWNSHIP	RANGE
E-1/4	23	83N	3W

OFFICE FILE NO. 83323o_072001

NO CERTIFICATION ON THIS CORNER. COUNTY SURVEY CREW: POSTEL-WOOD-POWELL 3-23-81

FOUND SEVERAL PIECES OF LIMESTONE AROUND OLD CORNER POST. EAST 1/4 COR. SECTION 23-83-3

REFERENCE:
JONES COUNTY BOOK 281, PAGE 51, 3-23-81

PREVIOUSLY RECORDED IN BOOK N/A, PAGE N/A. MONUMENT DESCRIPTION AND HOW ESTABLISHED FOUND SEVERAL PIECES OF LIMESTONE AROUND OLD CORNER POST. ONE OF TWO LIMESTONES MAY REPRESENT THE POSITION OF THE ORIGINAL CORNER. ACCEPTED AND USED POST AS SECTION CORNER, EAST 1/4 COR. SECTION 23, T83N, R3W OF THE 5TH P.M., JONES COUNTY, IOWA.

CORNERS TO BE INDEXED

CORNER	SECTION	TOWNSHIP	RANGE

OFFICE FILE NO. _____

PREVIOUSLY RECORDED IN BOOK _____, PAGE _____. MONUMENT DESCRIPTION AND HOW ESTABLISHED _____

CORNERS TO BE INDEXED

CORNER	SECTION	TOWNSHIP	RANGE

OFFICE FILE NO. _____

PREVIOUSLY RECORDED IN BOOK _____, PAGE _____. MONUMENT DESCRIPTION AND HOW ESTABLISHED _____

~~I hereby declare that this plat, survey or report was made by me or under my direct personal supervision and that I am a duly registered Land Surveyor under the laws of the State of Iowa.~~

Signed: _____

SEAL

JONES COUNTY ENGINEER'S OFFICE

19501 HWY. 64,
ANAMOSA, IOWA,
52205 (319)462-3785

2001 3967

FILED
RECORDERS OFFICE
JONES COUNTY IOWA

833230-110901

ID# 1013

01 NOV 16 AM 11:50

MARIE KRUTZFIELD
RECORDER No Fee

J.D. TJEPKES, LS. JONES COUNTY ENGINEER'S OFFICE, 19501 HWY. 64, ANAMOSA, IOWA, 52205 (319)462-3785

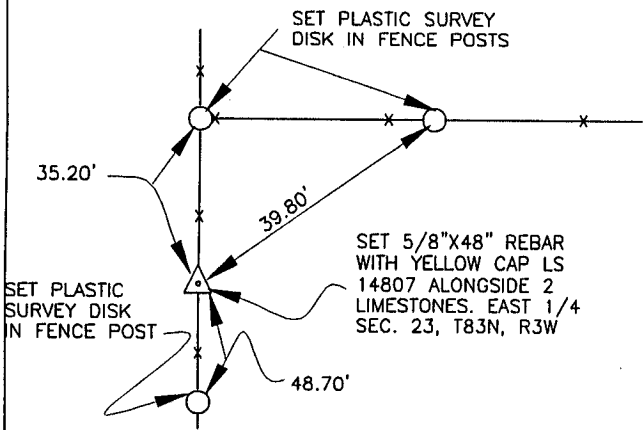
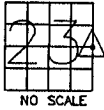
UNITED STATES PUBLIC LAND SURVEY CORNER CERTIFICATE

LAND SURVEY MONUMENTS SITUATED IN SECTION 23, TOWNSHIP 83
NORTH, RANGE 3 WEST OF THE 5TH P.M., JONES COUNTY, IOWA

CORNERS TO BE INDEXED

CORNER SECTION TOWNSHIP RANGE
EAST 1/4 23 83N 3W

OFFICE FILE NO.
833230_110901

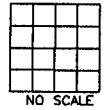


PREVIOUSLY RECORDED IN BOOK N/A, PAGE N/A
MONUMENT DESCRIPTION AND HOW ESTABLISHED FOUND TWO
LIMESTONES BURIED 18" BELOW SURFACE UNDER EXISTING FENCE LINE AT
PROPORTIONATE DISTANCE FROM SOUTHEAST CORNER SECTION 23 TO NORTHEAST
CORNER SECTION 23. LIMESTONES MEASURED 4"x4"x11" & 3"x4"x8". SET 5/8"x
48" REBAR WITH YELLOW CAP LS 14807 ALONGSIDE. SET REFERENCE POINTS
AND TIED OUT AS INDICATED. EAST QUARTER CORNER SECTION 23, T83N, R3W,
5TH P.M., JONES COUNTY, IOWA.

CORNERS TO BE INDEXED

CORNER SECTION TOWNSHIP RANGE

OFFICE FILE NO.

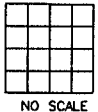


PREVIOUSLY RECORDED IN BOOK _____, PAGE _____
MONUMENT DESCRIPTION AND HOW ESTABLISHED _____

CORNERS TO BE INDEXED

CORNER SECTION TOWNSHIP RANGE

OFFICE FILE NO.

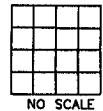


PREVIOUSLY RECORDED IN BOOK _____, PAGE _____
MONUMENT DESCRIPTION AND HOW ESTABLISHED _____

CORNERS TO BE INDEXED

CORNER SECTION TOWNSHIP RANGE

OFFICE FILE NO.



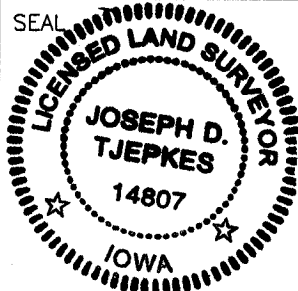
PREVIOUSLY RECORDED IN BOOK _____, PAGE _____
MONUMENT DESCRIPTION AND HOW ESTABLISHED _____

I hereby declare that this plat, survey or report was made by me or under my direct personal supervision and that I am a duly registered Land Surveyor under the laws of the State of Iowa.

Signed:

Joseph D. Tjepkes 11.09.01

Joseph D. Tjepkes L.S. Iowa Reg. No. 14807
My Registration Renewal Date is December 31, 2002



J.D. TJEPKES LS 14807
JONES COUNTY
ENGINEER'S OFFICE

19501 HWY. 64,
ANAMOSA, IOWA,
52205 (319)462-3785