

2001 1606
 FILED
 RECORDERS OFFICE
 JONES COUNTY IOWA

01 MAY 15 AM 10:22

MARIE KRUTZFIELD
 RECORDER *No Fee*

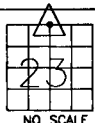
J.D. TJEPKES, LS. JONES COUNTY ENGINEER'S OFFICE, 19501 HWY. 64, ANAMOSA, IOWA, 52205 (319)462-3785

UNITED STATES PUBLIC LAND SURVEY CORNER CERTIFICATE

LAND SURVEY MONUMENTS SITUATED IN SECTION 23, TOWNSHIP 83
 NORTH, RANGE 3 WEST OF THE 5TH P.M., JONES COUNTY, IOWA

CORNERS TO BE INDEXED

CORNER SECTION TOWNSHIP RANGE
 N-1/4 23 83N 3W

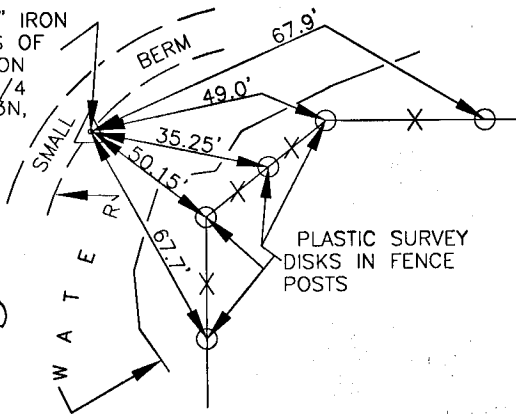


NO SCALE

OFFICE FILE NO.

83323c_040401

FD. 5/8"x30" IRON
 PIN PER TIES OF
 HAROLD DILLON
 LS 6581. N1/4
 SEC. 23, T83N,
 R3W, JONES
 COUNTY, IA.

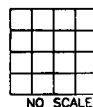


COUNTY
 (FIELD BOOK)
 (NO.281)

HAROLD DILLON TIES-11-15-94
 PREVIOUSLY RECORDED IN BOOK _____, PAGE _____
 MONUMENT DESCRIPTION AND HOW ESTABLISHED. FD. 5/8"x
 30" REBAR W/CAP 2' BELOW SURFACE PER HAROLD DILLON
 TIES 11-15-94. SET 5/8"x48" REBAR W/CAP LS 14807
 ALONGSIDE FLUSH WITH GROUND. SET NEW REFERENCE POINTS
 AND TIED OUT AS INDICATED. N-1/4-23-83-3, JONES CTY.

CORNERS TO BE INDEXED

CORNER SECTION TOWNSHIP RANGE



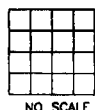
NO SCALE

OFFICE FILE NO.

PREVIOUSLY RECORDED IN BOOK _____, PAGE _____
 MONUMENT DESCRIPTION AND HOW ESTABLISHED _____

CORNERS TO BE INDEXED

CORNER SECTION TOWNSHIP RANGE



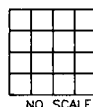
NO SCALE

OFFICE FILE NO.

PREVIOUSLY RECORDED IN BOOK _____, PAGE _____
 MONUMENT DESCRIPTION AND HOW ESTABLISHED _____

CORNERS TO BE INDEXED

CORNER SECTION TOWNSHIP RANGE



NO SCALE

OFFICE FILE NO.

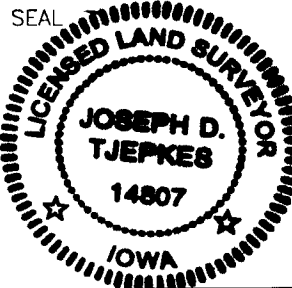
PREVIOUSLY RECORDED IN BOOK _____, PAGE _____
 MONUMENT DESCRIPTION AND HOW ESTABLISHED _____

I hereby declare that this plat, survey or report
 was made by me or under my direct personal
 supervision and that I am a duly registered Land
 Surveyor under the laws of the State of Iowa.

Signed:

[Signature] 4-10-01

Joseph D. Tjepkes L.S. Iowa Reg. No. 14807
 My Registration Renewal Date is December 31, 2002

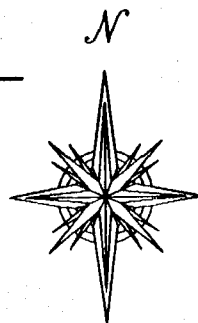


J.D. TJEPKES LS 14807
 JONES COUNTY
 ENGINEER'S OFFICE

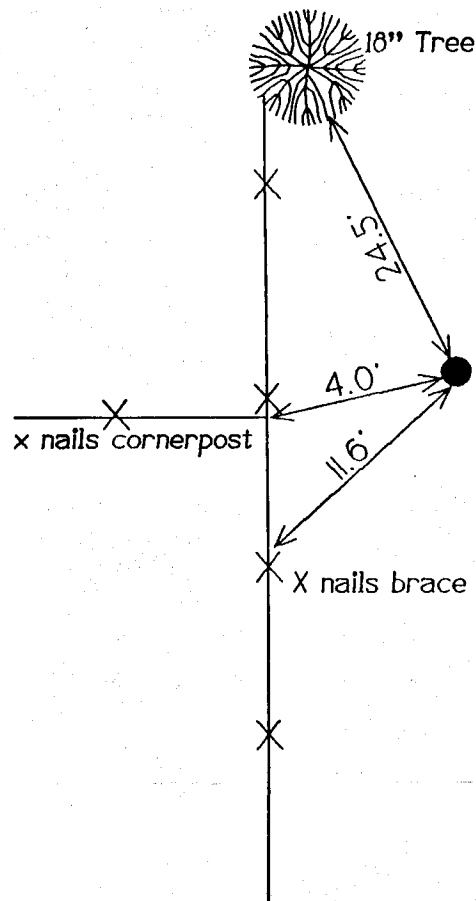
19501 HWY. 64,
 ANAMOSA, IOWA,
 52205 (319)462-3785

United States Public Land Survey Corner Certificate

Land survey corner in Section 23 Township 83
North, Range 3 West of the 5th Principal Meridian
----- Jones ----- County, Iowa.

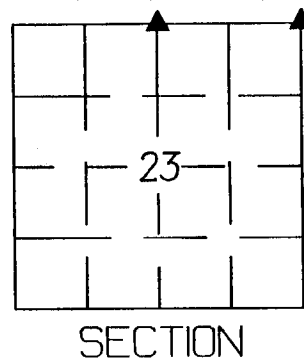


No Scale



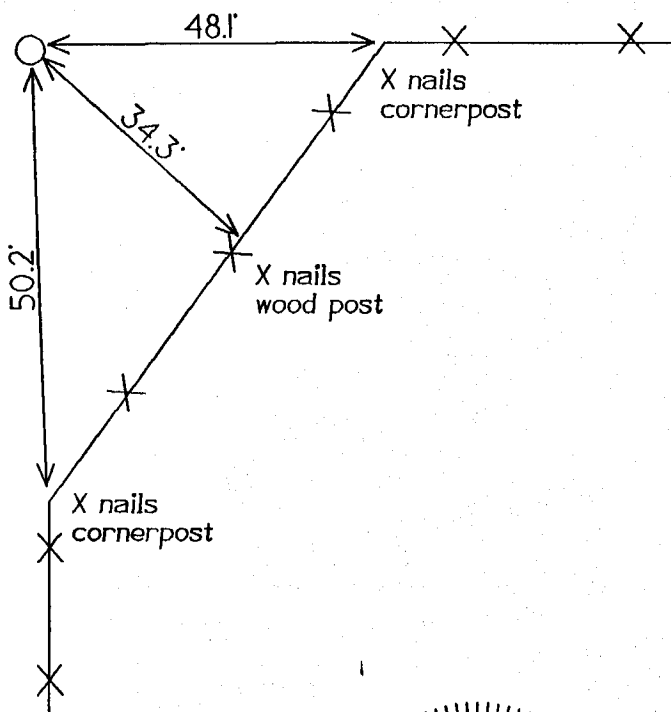
NE Corner
Sec 23-83-3
End Stone w/2 I.P.s

*ON CORNER
11-29-94*



N 1/4 Corner
Sec 23/83/3
Set I.P. capped
Reestablished
via county tie
records

*ON CORNER
11-29-94*



Certification

I hereby certify that this plat and survey was made by me or under my direct supervision and that I am a duly Registered Land Surveyor under the laws of the State of Iowa.

Harold E. Dillon

Harold E. Dillon Reg.#6581

11/15/94

date

