

COPY

Jones County Marie Krutzfield Recorder
 Fee Book 2012 3104
 10/26/2012 @1026AM # Pages 1
 ZSC SEC COR CERT
 Total Fees: \$0.00

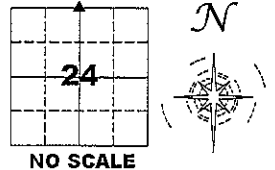
PREPARED BY
 CLARENCE J. WALTON, JONES COUNTY ENGINEER'S OFFICE, 19501 HWY. 64, ANAMOSA, IOWA, 52205 (319) 462-3785

UNITED STATES PUBLIC LAND SURVEY CORNER CERTIFICATE

LAND SURVEY MONUMENTS SITUATED IN SECTION 24, TOWNSHIP 83 NORTH,
 RANGE 3 WEST OF THE 5TH PRINCIPAL MERIDIAN, JONES COUNTY, IOWA.

STATE PLANE COORDINATE
 NAD 83 IOWA NORTH
 N: 3468491.64
 E: 5562304.40

CORNER SECTION TOWNSHIP RANGE
 N 1/4 CORNER 24 83N 3W

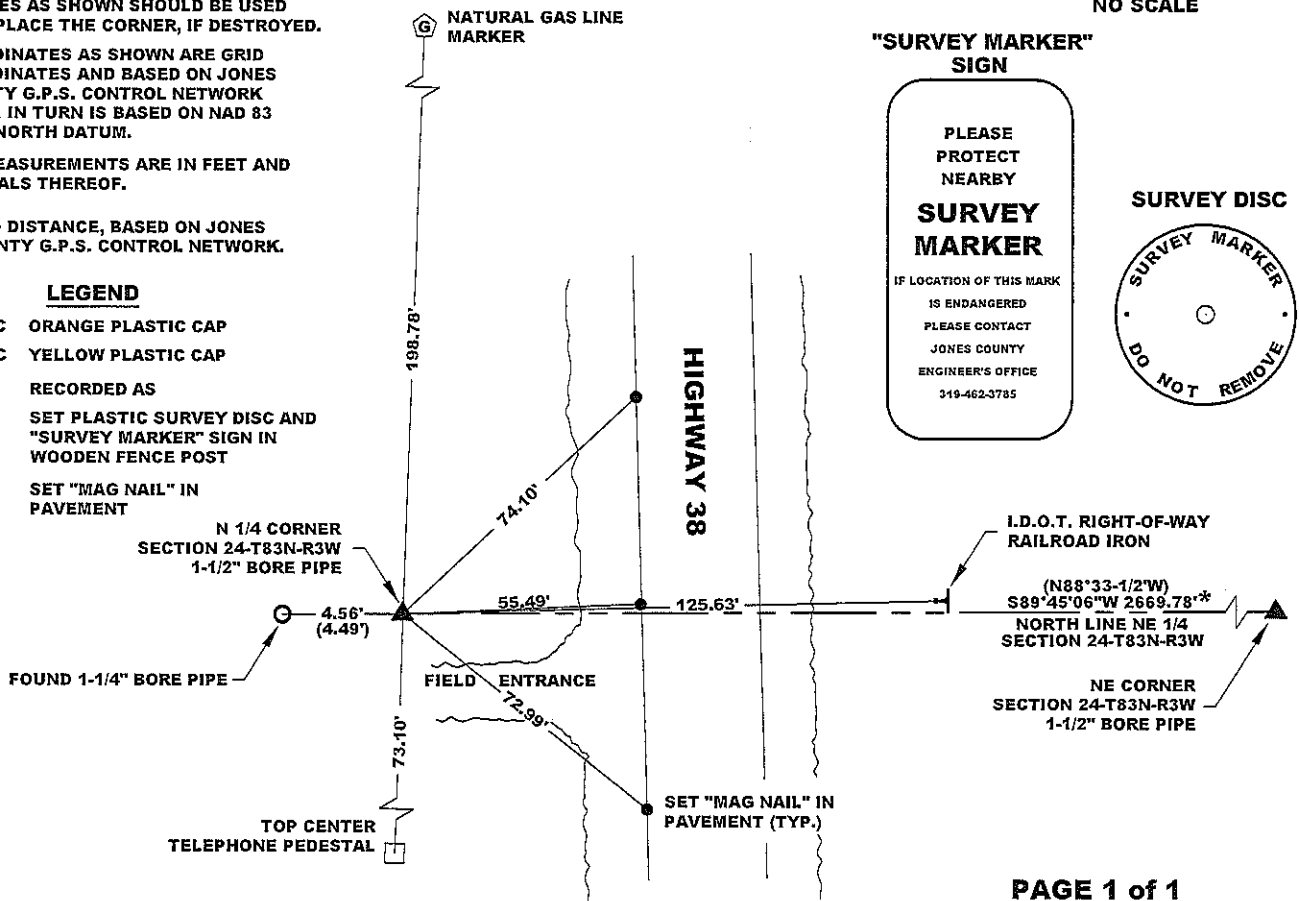


NOTES:

- 1) THE STATE PLANE COORDINATES AS SHOWN ARE FOR CONVENIENCE ONLY. THE TIES AS SHOWN SHOULD BE USED TO REPLACE THE CORNER, IF DESTROYED.
- 2) COORDINATES AS SHOWN ARE GRID COORDINATES AND BASED ON JONES COUNTY G.P.S. CONTROL NETWORK WHICH IN TURN IS BASED ON NAD 83 IOWA NORTH DATUM.
- 3) ALL MEASUREMENTS ARE IN FEET AND DECIMALS THEREOF.
- 4) * GRID DISTANCE, BASED ON JONES COUNTY G.P.S. CONTROL NETWORK.

LEGEND

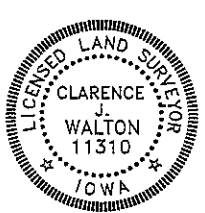
- OPC ORANGE PLASTIC CAP
- YPC YELLOW PLASTIC CAP
- () RECORDED AS
- SET PLASTIC SURVEY DISC AND "SURVEY MARKER" SIGN IN WOODEN FENCE POST
- SET "MAG NAIL" IN PAVEMENT



PAGE 1 of 1

PREVIOUSLY RECORDED IN BOOK 370, PAGE 233
 MONUMENT DESCRIPTION AND HOW ESTABLISHED FOUND 1-1/2" BORE PIPE PER TIES RECORDED IN BOOK 370, PAGE 233. MOST OF PREVIOUS TIES ARE NOW GONE.

DATE OF SURVEY: 10/25/12 FIELD BOOK: #381, PAGE 66



I hereby certify that this land surveying document and the related survey work was performed by me or under my direct personal supervision and that I am a duly registered Land Surveyor under the laws of the State of Iowa.

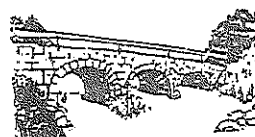
Signed: *Clarence J. Walton* 10/26/12
 Clarence J. Walton, L.S.
 My Registration Renewal Date is December 31, 2013
 Iowa License Number 11310
 Pages or sheets covered by this seal: 1 of 1.

- A. THERE IS NO CERTIFICATE FOR THE CORNER ON FILE WITH THE RECORDER OF THE COUNTY IN WHICH THE CORNER IS LOCATED.
- B. THE CORNER MONUMENT HAS BEEN REPLACED OR MODIFIED.
- C. THE SURVEYOR IN RESPONSIBLE CHARGE OF THE LAND SURVEYING ACCEPTS A CORNER POSITION THAT DIFFERS FROM THAT SHOWN IN THE PUBLIC RECORDS OF THE COUNTY IN WHICH THE CORNER IS LOCATED.
- D. THE REFERENCE TIES REFERRED TO IN AN EXISTING PUBLIC RECORD NO LONGER EXIST.

CORNERS TO BE INDEXED

CORNER	SECTION	TOWNSHIP	RANGE
N 1/4 CORNER	24	83N	3W
S 1/4 CORNER	13	83N	3W

JONES COUNTY ENGINEER'S OFFICE



19501 HWY. 64, ANAMOSA, IOWA 52205
 (319) 462-3785

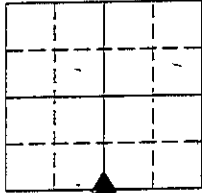
UNITED STATES PUBLIC LAND SURVEY CORNER CERTIFICATE

LAND SURVEY MONUMENTS SITUATED IN SECTION 13, TOWNSHIP 23 NORTH
RANGE 3 WEST OF THE 5TH P.M., JONES COUNTY, IOWA.

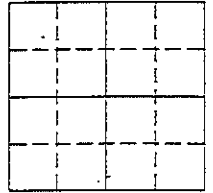
NO SCALE



S 1/4 CORNER



NO SCALE

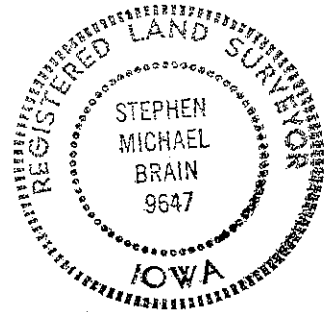
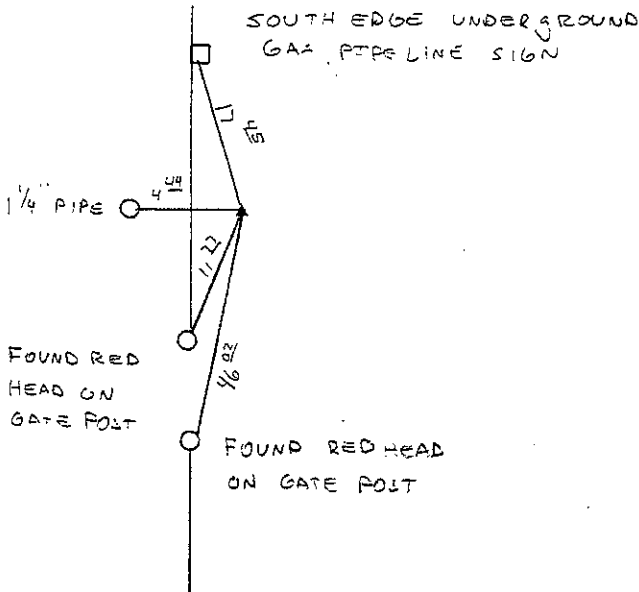


1659

FILED
RECORDERS OFFICE
JONES COUNTY IOWA

94 DEC 21 AM 10:04

BOOK 370 PAGE 233
LINDA J. BENDIXEN
RECORDER *LJB*



PREVIOUSLY RECORDED IN BOOK _____ PAGE _____

MONUMENT DESCRIPTION AND HOW ESTABLISHED _____

FOUND 1 1/2" PIPE

PREVIOUSLY RECORDED IN BOOK _____ PAGE _____

MONUMENT DESCRIPTION AND HOW ESTABLISHED _____

I hereby declare that this plat, survey or report was made by me or under my direct personal supervision and that I am a duly registered Land Surveyor under the laws of the State of Iowa.

Signed *Stephen Michael Brain* Date 12/2/94

Stephen Michael Brain, P.E. & L.S. Iowa Reg No. 9647
My Registration Renewal Date Is December 31, 1994

CORNERS TO BE INDEXED

CORNER	SECTION	TOWNSHIP	RANGE
<u>S 1/4</u>	<u>13</u>	<u>23</u>	<u>3</u>

BRAIN ENGINEERING, INC.

700 11TH STREET, SUITE 201
MARION, IOWA 52302
(319) 373-1318

UNITED STATES PUBLIC LAND SURVEY CORNER CERTIFICATE

OF

and Survey Monuments situated in Section 13, Township 83, Range 03, of the Fifth Principal Meridian, JONES County, Iowa. Previously recorded in _____ in County Recorder's Office.

(book, page, document number, etc.)

Now reason for preparing this certificate, the evidence and detailed procedures used in establishing the corner positions and monumentation found or placed.)

Monument Description and Remarks: THESE CORNERS WERE USED IN A SURVEY FOR THE CITY OF OLIN. W.O. # 193017, AUGUST 13, 1993
FIELD BOOK 196 PAGE 16

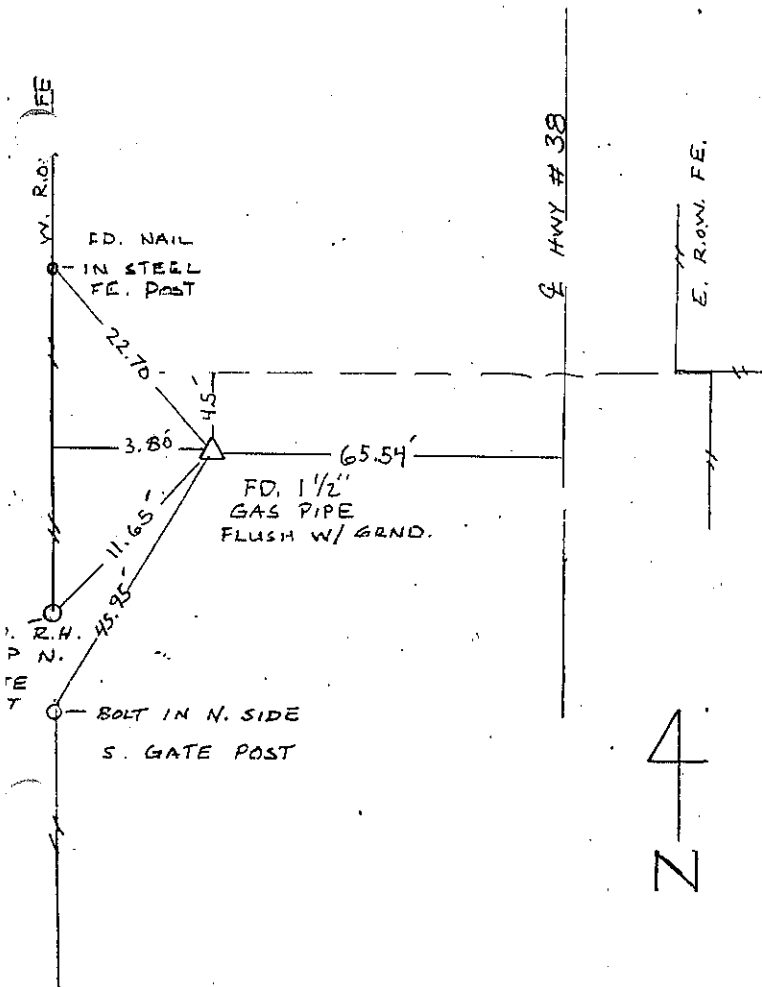
D. WOODER P.C.

D. ACKERMAN REC.

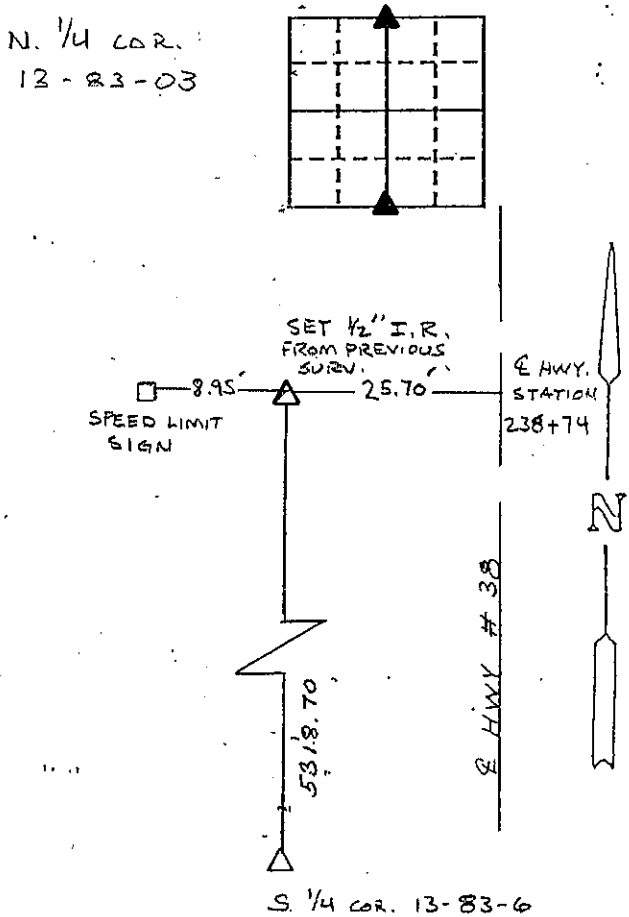
PLAN - VIEW

Now a minimum of three reference ties to durable physical objects, relevant monuments and physical conditions that will enable recovery of the corner.)

S. 1/4 COR. 13-83-03



N. 1/4 COR. 13-83-03



I hereby certify that the survey work was completed and this certificate was prepared by me or under my direct personal supervision and that I am a duly registered land surveyor under the laws of the state of Iowa.

Signature: Donald A. Thomas
Name typed or printed:

Date: 8-13-93 Reg. No. 6019

Corners	List Corners to be Indexed Section	Twp	Range
S 1/4	13	83	03
N 1/4	13	83	03

2823



FILED
RECORDERS OFFICE
JONES COUNTY IOWA

94 MAR 31 AM 10:33

BOOK 356 PAGE 141
LINDA J. GENDRACH
RECORDER 6.00

EAL