

COPY

Jones County Marie Krutzfield Recorder
 Fee Book 2012 3093
 10/24/2012 @0320PM # Pages 1
 ZSC SEC COR CERT
 Total Fees: \$0.00

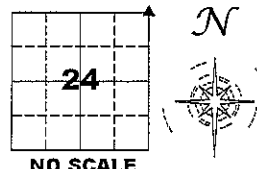
PREPARED BY
 CLARENCE J. WALTON, JONES COUNTY ENGINEER'S OFFICE, 19501 HWY. 64, ANAMOSA, IOWA, 52205 (319) 462-3785

UNITED STATES PUBLIC LAND SURVEY CORNER CERTIFICATE

LAND SURVEY MONUMENTS SITUATED IN SECTION 24, TOWNSHIP 83 NORTH,
 RANGE 3 WEST OF THE 5TH PRINCIPAL MERIDIAN, JONES COUNTY, IOWA.

STATE PLANE COORDINATE
 NAD 83 IOWA NORTH
 N: 3468503.22
 E: 5564974.15

CORNER SECTION TOWNSHIP RANGE
 NE CORNER 24 83N 3W



NOTES:

- 1) THE STATE PLANE COORDINATES AS SHOWN ARE FOR CONVENIENCE ONLY. THE TIES AS SHOWN SHOULD BE USED TO REPLACE THE CORNER, IF DESTROYED.
- 2) COORDINATES AS SHOWN ARE GRID COORDINATES AND BASED ON JONES COUNTY G.P.S. CONTROL NETWORK WHICH IN TURN IS BASED ON NAD 83 IOWA NORTH DATUM.
- 3) ALL MEASUREMENTS ARE IN FEET AND DECIMALS THEREOF.
- 4) * GRID DISTANCE, BASED ON JONES COUNTY G.P.S. CONTROL NETWORK.

"SURVEY MARKER" SIGN

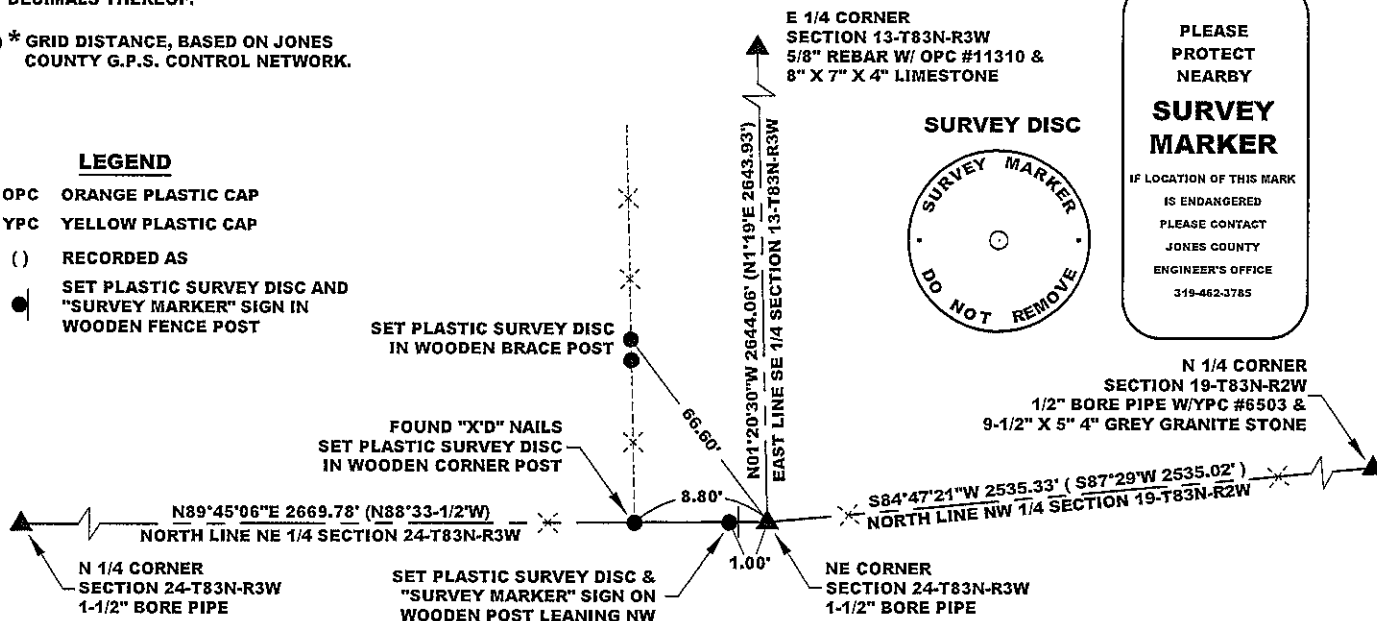
PLEASE PROTECT NEARBY
SURVEY MARKER
 IF LOCATION OF THIS MARK IS ENDANGERED PLEASE CONTACT JONES COUNTY ENGINEER'S OFFICE 319-462-3785

SURVEY DISC



LEGEND

- OPC ORANGE PLASTIC CAP
- YPC YELLOW PLASTIC CAP
- () RECORDED AS
- SET PLASTIC SURVEY DISC AND "SURVEY MARKER" SIGN IN WOODEN FENCE POST

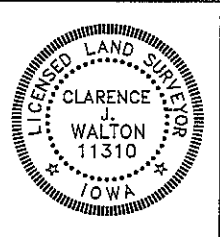


PAGE 1 of 1

PREVIOUSLY RECORDED IN N/A

MONUMENT DESCRIPTION AND HOW ESTABLISHED FOUND 1-1/2\"/>

DATE OF SURVEY: 10/16/12 FIELD BOOK: #381, PAGE 66



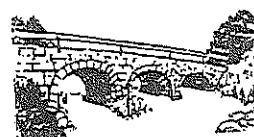
I hereby certify that this land surveying document and the related survey work was performed by me or under my direct personal supervision and that I am a duly registered Land Surveyor under the laws of the State of Iowa.
 Signed: *Clarence J. Walton* 10/24/12
 Clarence J. Walton, L.S.
 My Registration Renewal Date is December 31, 2013
 Iowa License Number 11310
 Pages or sheets covered by this seal: 1 of 1.

- A. THERE IS NO CERTIFICATE FOR THE CORNER ON FILE WITH THE RECORDER OF THE COUNTY IN WHICH THE CORNER IS LOCATED.
- B. THE CORNER MONUMENT HAS BEEN REPLACED OR MODIFIED.
- C. THE SURVEYOR IN RESPONSIBLE CHARGE OF THE LAND SURVEYING ACCEPTS A CORNER POSITION THAT DIFFERS FROM THAT SHOWN IN THE PUBLIC RECORDS OF THE COUNTY IN WHICH THE CORNER IS LOCATED.
- D. THE REFERENCE TIES REFERRED TO IN AN EXISTING PUBLIC RECORD NO LONGER EXIST.

CORNERS TO BE INDEXED

CORNER	SECTION	TOWNSHIP	RANGE
NE CORNER	24	83N	3W
SE CORNER	13	83N	3W
SW CORNER	18	83N	2W
NW CORNER	19	83N	2W

JONES COUNTY ENGINEER'S OFFICE



19501 HWY. 64, ANAMOSA, IOWA 52205
 (319) 462-3785

UNITED STATES PUBLIC LAND SURVEY CORNER CERTIFICATE

LAND SURVEY MONUMENTS SITUATED IN SECTION 24, TOWNSHIP 83
NORTH, RANGE 3 WEST OF THE 5TH P.M., JONES COUNTY, IOWA

1014 CORNERS TO BE INDEXED

CORNER	SECTION	TOWNSHIP	RANGE
NE	24	83N	3W

OFFICE FILE NO. 83324e_072501

JONES COUNTY SURVEY
CREW 1951
NO CERTIFICATION ON THIS

REFERENCE: JONES COUNTY F.A.-234 (1)

LOT COR. WEST OF NE. COR. 24

NORTHEAST COR. SEC. 24-83-3

NOTE: THIS INFORMATION WAS TAKEN FROM THE SMALL INDEX CARD (1951) A NOTE AT THE BOTTOM OF THE CARD {FOUND 4"x9"x12" LIMESTONE} MAY HAVE BEEN FOR THE SECTION COR. OR LOT COR.?

PREVIOUSLY RECORDED IN BOOK _____, PAGE _____
MONUMENT DESCRIPTION AND HOW ESTABLISHED _____

1015 CORNERS TO BE INDEXED

CORNER	SECTION	TOWNSHIP	RANGE
EAST 1/4	24	83N	3W

OFFICE FILE NO. 83324e_072501

JONES COUNTY SURVEY
CREW 1951
NO CERTIFICATION ON THIS

REFERENCE: JONES BOOK 277
PAGE 1
NO CERTIFICATE ON THIS

PREVIOUSLY RECORDED IN BOOK _____, PAGE _____
MONUMENT DESCRIPTION AND HOW ESTABLISHED FOUND 3/4" X 18" IRON PIN 18" BELOW ROAD SURFACE. SET 1/2" X 22" REBAR DIRECTLY ABOVE WITH TOP 6" BELOW ROAD SURFACE. EAST 1/4 COR. SEC. 24, T84N, R3W, 5TH P.M., JONES COUNTY, IOWA. SET REFERENCE POINTS AND TIED OUT AS INDICATED.

1016 CORNERS TO BE INDEXED

CORNER	SECTION	TOWNSHIP	RANGE
CENTER	24	83N	3W

OFFICE FILE NO. 83324m_072501

JONES COUNTY SURVEY
CREW (1951)
SET 9"x14"x18" GRANITE STONE OVER 5/8"x24" IRON PIN, CENTER SECTION 24, T83N, R3W

REFERENCE: JONES BOOK 277, PAGE-1

COUNTY SURVEY CREW: POSTEL-POWELL-ROBERTSON

FOUND GAS PIPE AT GROUND SURFACE MARKED WITH ANGLE IRON 2' ABOVE.

PREVIOUSLY RECORDED IN BOOK N/A, PAGE N/A
MONUMENT DESCRIPTION AND HOW ESTABLISHED THERE ARE SOME SURVEY PROBLEMS IN THE AREA WEST, SOUTHWEST, EAST AND SOUTHEAST OF THIS CORNER, THIS CORNER IS PROBABLY ACCEPTABLE, BUT (LOOKOUT) CENTER SEC. 24, T83N, R3W, JONES COUNTY, IOWA

CORNERS TO BE INDEXED

CORNER	SECTION	TOWNSHIP	RANGE

OFFICE FILE NO. _____

NO CERTIFICATION ON THIS

PREVIOUSLY RECORDED IN BOOK _____, PAGE _____
MONUMENT DESCRIPTION AND HOW ESTABLISHED _____

~~I hereby declare that this plat, survey or report was made by me or under my direct personal supervision and that I am a duly registered Land Surveyor under the laws of the State of Iowa.~~

Signed: _____

SEAL

JONES COUNTY ENGINEER'S OFFICE

19501 HWY. 64,
ANAMOSA, IOWA,
52205 (319)462-3785