

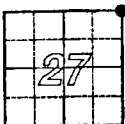
2000 2887

FILED
RECORDERS OFFICE
JONES COUNTY IOWA

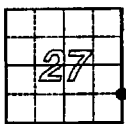
00 SEP 21 AM 10:04

MARIE KRUTZFIELD
RECORDER *6.00 Pd*

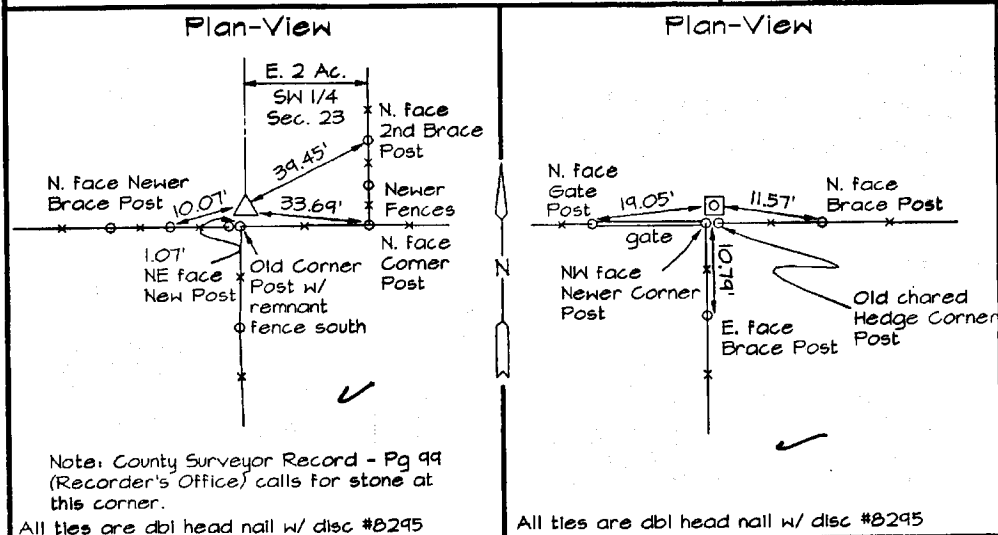
Prepared by: Thomas Anthony, 535 Southgate Ave., Iowa City, IA 52240, 319-354-1984



JONES COUNTY
U.S. PUBLIC LAND SURVEY
CORNER CERTIFICATE



RECORDER USE ONLY



Note: County Surveyor Record - Pg 99 (Recorder's Office) calls for stone at this corner.

All ties are dbl head nail w/ disc #8295

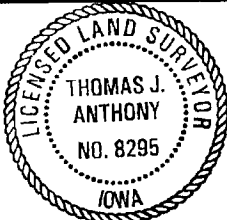
All ties are dbl head nail w/ disc #8295

Monument Description and Remarks:

NE Cor. Sec. 27-83-03
Found pointed stone w/ 3" iron ring on top, 2' deep north of oldest corner post.
Raised stone to surface and set 5/8" rebar w/ cap 8295 on E. edge. Ties and measurements are to a cut "x" in top of stone.

Monument Description and Remarks:

S 1/16 Cor. SE 1/4 Sec. 27-83-03
Dug and probed around corner post. One large stone found E. of post; did not accept as monument. Set 5/8" rebar w/ cap 8295 at the best intersection of all fences 0.76' NE of tie in newer corner post.



I hereby certify that this land surveying document was prepared and the related survey work was performed by me or under my direct personal supervision and that I am a duly licensed Land Surveyor under the laws of the State of Iowa.

Thomas Anthony 9.19.2000
date

Thomas J. Anthony
License number 8295
My license renewal date is December 31, 2000.
Pages or sheets covered by this seal: 1 of 1



LANDMARK

Surveying and Engineering
535 Southgate Avenue
Iowa City, Iowa 52240
Phone (319) 354-1984

Survey Corner Certificate

Corner	Section	Twp	Range
NE	27	83	03
S 1/16 SE 1/4	27	83	03

Field BK 87/88-41
Date 8/22/2K
Job No. 99016A
Sheet 1 of 1