

Instrument #: 2022-3357
 11/28/2022 02:18:59 PM Total Pages: 1
 ZSC SECTION CORNER CERTIFICATE
 Recording Fee: \$7.00 Transfer Tax: \$0
 Sheri L. Jones, Recorder, Jones County Iowa



PREPARED BY: RANDALL L. RATTENBORG 105 WEST MAIN STREET MANCHESTER, IA 52057, 563-927-2434

UNITED STATES PUBLIC LAND SURVEY CORNER CERTIFICATE

Land Survey Monuments situated in Section 22, Township 83 North, Range 3 West of the Fifth Principal Meridian,
JONES County, Iowa.

Previously recorded in County Recorder's Office in SEE DESCRIPTIONS BELOW
(book, page, document number, etc.)

NE Corner NW 1/4 - SE 1/4: Found 1/2" rebar with red cap #13657 as shown in plat recorded in Inst. #2011 2578. Corner Certificate being issued due to no previous certificate on record.

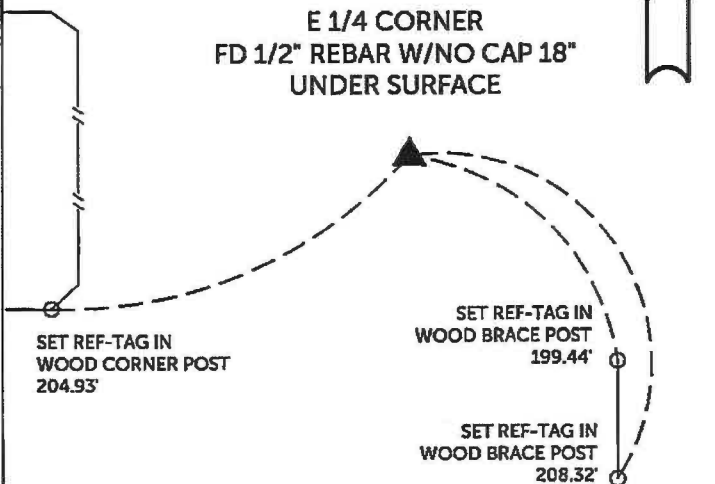
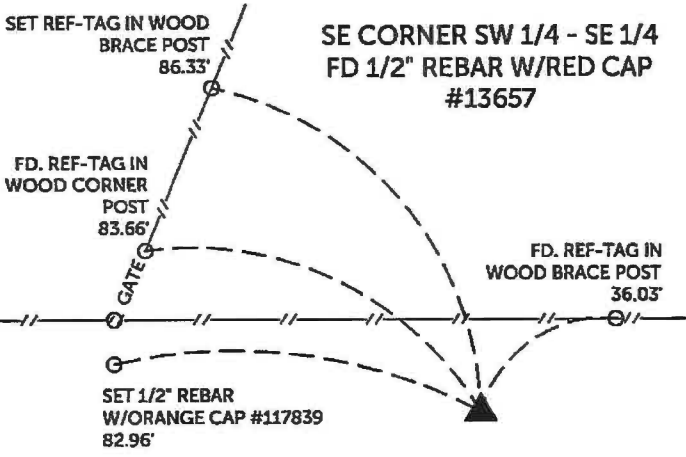
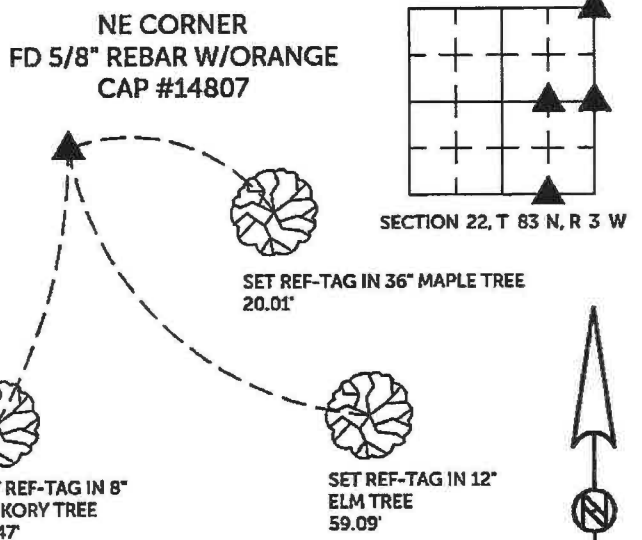
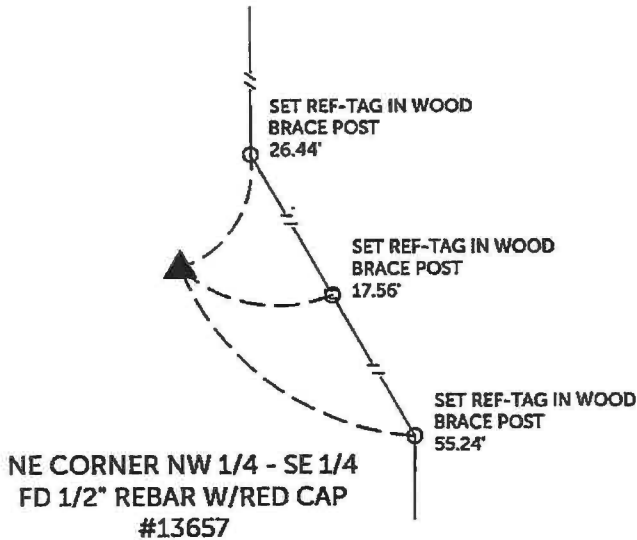
NE Corner: Found 5/8" rebar with orange cap #14807 as recorded in Inst. # 2003 0502. Corner Certificate being reissued due to missing tie objects.

SE Corner SW 1/4 - SE 1/4: Found 1/2" rebar with red cap #13657 as recorded in Inst. # 2021 2775. Corner Certificate being reissued due to missing tie objects.

E 1/4 Corner: Found 1/2" rebar with no cap 18" under the ground as recorded in Inst. # 2003 0502. Corner Certificate being reissued due to missing tie objects.

PLAN VIEW

(Show a minimum of three reference ties to durable physical objects, relevant monuments and physical conditions that will enable recovery of the corner.)




TIES ARE TO PLAT PARCEL 2022-74, PARCEL 2022-75, PARCEL 2022-76
 IN SECTION 22, T 83 N, R 3 W

BURRINGTON GROUP, INC. PROJECT NO. 22-144

I HEREBY CERTIFY THAT THIS LAND SURVEYING DOCUMENT
 WAS PREPARED AND THE RELATED SURVEY WORK WAS
 PERFORMED BY ME OR UNDER MY DIRECT PERSONAL
 SUPERVISION AND THAT I AM A DULY LICENSED PROFESSIONAL
 LAND SURVEYOR UNDER THE LAWS OF THE STATE OF IOWA.

SEAL COVERS THIS SHEET ONLY


 Randall L. Rattenborg, F.L.S. License #17939 Date 11/28/2022
 My license renewal date is December 31, 2023
 List Corners to be Indexed: Section Township Range
 NE CORNER NW 1/4 - SE 1/4 22 T 83N R 3 W
 NE CORNER
 SE CORNER SW 1/4 - SE 1/4
 E 1/4 CORNER



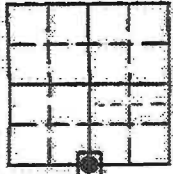
 **BURRINGTON GROUP, INC.**
 Civil Engineering | Land Surveying
 105 W. Main Street Manchester, Iowa 52057

Instrument #: 2021-2775
 08/02/2021 09:48:30 AM Total Pages: 1
 ZSC SECTION CORNER CERTIFICATE
 Recording Fee: \$7.00 Transfer Tax: \$0
 Sheri L. Jones, Recorder, Jones County Iowa

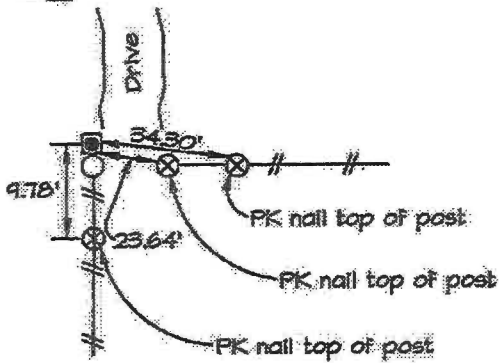


Prepared by: Richard M. Kordick, P.E.L.S., 689 185th St., Tipton, Iowa 52712 Phone: (563) 432-6424

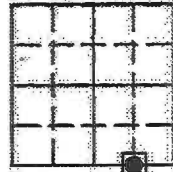
U.S. PUBLIC LAND SURVEY CORNER CERTIFICATE



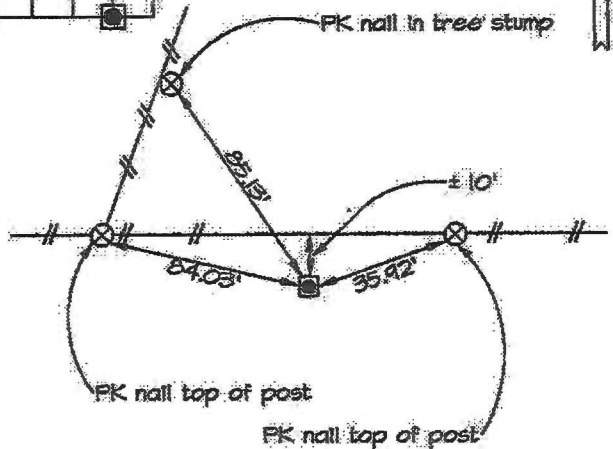
S 1/4 Corner
 22-85N-3W
 Jones County



Plan-View No Scale



SE Corner
 SW 1/4 SE 1/4
 22-85N-3W
 Jones County



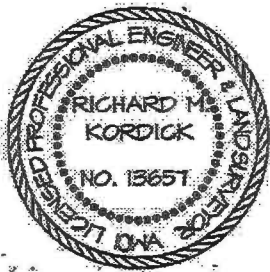
Plan-View No Scale

Reason for corner tie:

- A) There is no certificate for the corner on file with the recorder.
- B) Corner position differs from previously recorded certificate recorded in book , page
- C) Corner monument was replaced or modified.
- D) Reference ties in previously recorded certificate recorded in book , page are incorrect or missing.

Field search was performed with a metal detector, excavation and probing. Nothing was found. A 1/2" rebar with red cap "Kordick 13657" was set at the existing corner post which perpetuated the corner location.

Field search was performed with a metal detector, excavation and probing. Nothing was found. A 1/2" rebar with red cap "Kordick 13657" was set equidistance on-line from the S 1/4 to the SE corner.



I hereby certify that this land surveying document was prepared and the related survey work was performed by me or under my direct personal supervision and that I am a duly licensed Land Surveyor under the laws of the State of Iowa.

Richard M. Kordick 7/29/2021
 Richard M. Kordick date
 License number 13657
 My license renewal date is December 31, 2021.
 Pages or sheets covered by this seal: 1 of 1

LEGEND:

- Section Corner as noted
- Power Pole
- Section line
- Centerline
- Existing Fence
- Recorded Dist.

Kordick Surveying & Engineering
 120 East Main, Suite D
 Anamosa, Iowa 52205
 (319) 462-4498

U.S. Public Land
 Survey Corner Certificate

Field #K
 11042
 Date
 7/29/21
 Job No.
 11042
 Sheet
 1 of 1