

2001 1603

FILED
RECORDERS OFFICE
JONES COUNTY IOWA

01 MAY 15 AM 10:19

MARIE KRUTZFIELD
RECORDER *No Fee*

J.D. Tjepkes, LS. JONES COUNTY ENGINEER'S OFFICE, 19501 HWY. 64, ANAMOSA, IOWA, 52205 (319)462-3785

UNITED STATES PUBLIC LAND SURVEY CORNER CERTIFICATE

LAND SURVEY MONUMENTS SITUATED IN SECTION 28, TOWNSHIP 83
NORTH, RANGE 3 WEST OF THE 5TH P.M., JONES COUNTY, IOWA

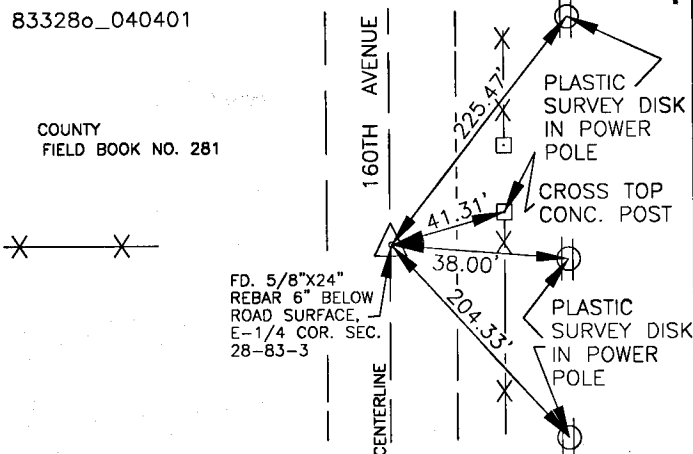
CORNERS TO BE INDEXED

CORNER SECTION TOWNSHIP RANGE
E-1/4 28 83N 3W

OFFICE FILE NO.

83328e_040401

COUNTY
FIELD BOOK NO. 281



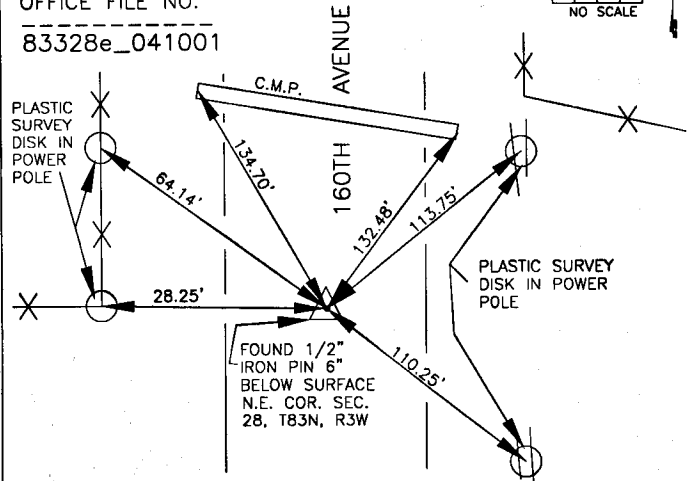
PREVIOUSLY RECORDED IN BOOK 333, PAGE 139
MONUMENT DESCRIPTION AND HOW ESTABLISHED FOUND
5/8\"X24\" IRON PIN PER RECORDED TIES 6\" BELOW SURFACE. SET NEW
REFERENCE POINTS AND TIED OUT AS INDICATED. EAST QUARTER CORNER
SECTION 28, TOWNSHIP 83 NORTH, RANGE 3 WEST, JONES COUNTY, IOWA
MOST RECENT CORNER FILING AT RECORDERS: DOCUMENT NO. 1999, 3499

CORNERS TO BE INDEXED

CORNER SECTION TOWNSHIP RANGE
N.E. 28 83N 3W

OFFICE FILE NO.

83328e_041001

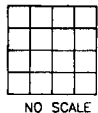


PREVIOUSLY RECORDED IN BOOK 333, PAGE 139
MONUMENT DESCRIPTION AND HOW ESTABLISHED FOUND 1/2\"X
24\" IRON PIN 6\" BELOW SURFACE PER RECORDED TIES. SET NEW
REFERENCE POINTS AND TIED OUT AS INDICATED. NORTHEAST CORNER
SECTION 28, TOWNSHIP 83 NORTH, RANGE 3 WEST, JONES COUNTY,
IOWA.

CORNERS TO BE INDEXED

CORNER SECTION TOWNSHIP RANGE

OFFICE FILE NO.



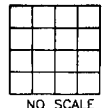
NO SCALE

PREVIOUSLY RECORDED IN BOOK _____, PAGE _____
MONUMENT DESCRIPTION AND HOW ESTABLISHED _____

CORNERS TO BE INDEXED

CORNER SECTION TOWNSHIP RANGE

OFFICE FILE NO.



NO SCALE

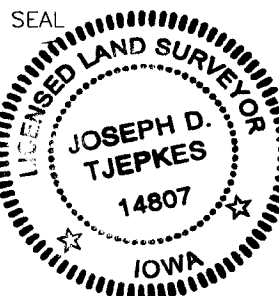
PREVIOUSLY RECORDED IN BOOK _____, PAGE _____
MONUMENT DESCRIPTION AND HOW ESTABLISHED _____

I hereby declare that this plat, survey or report was made by me or under my direct personal supervision and that I am a duly registered Land Surveyor under the laws of the State of Iowa.

Signed:

Joseph D. Tjepkes 4-10-01

Joseph D. Tjepkes L.S. Iowa Reg. No. 14807
My Registration Renewal Date is December 31, 2002



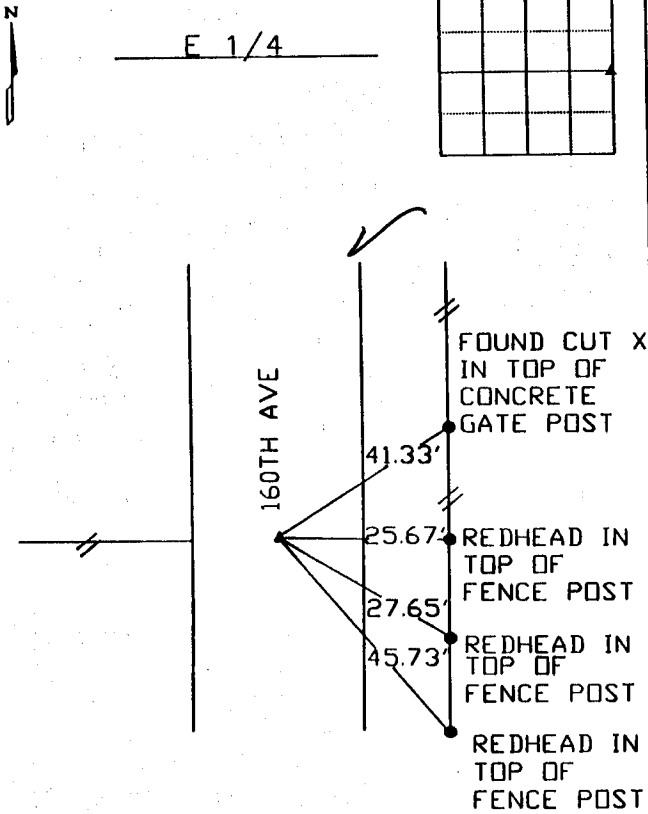
J.D. Tjepkes LS 14807
JONES COUNTY
ENGINEER'S OFFICE

19501 HWY. 64,
ANAMOSA, IOWA,
52205 (319)462-3785

UNITED STATES PUBLIC LAND SURVEY CORNER CERTIFICATE

LAND SURVEY MONUMENTS SITUATED IN SECTION 28, TOWNSHIP 83 NORTH
RANGE 3 WEST OF THE 5TH P.M., JONES COUNTY, IOWA.

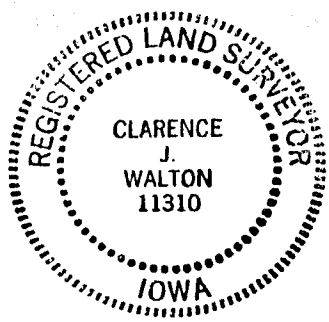
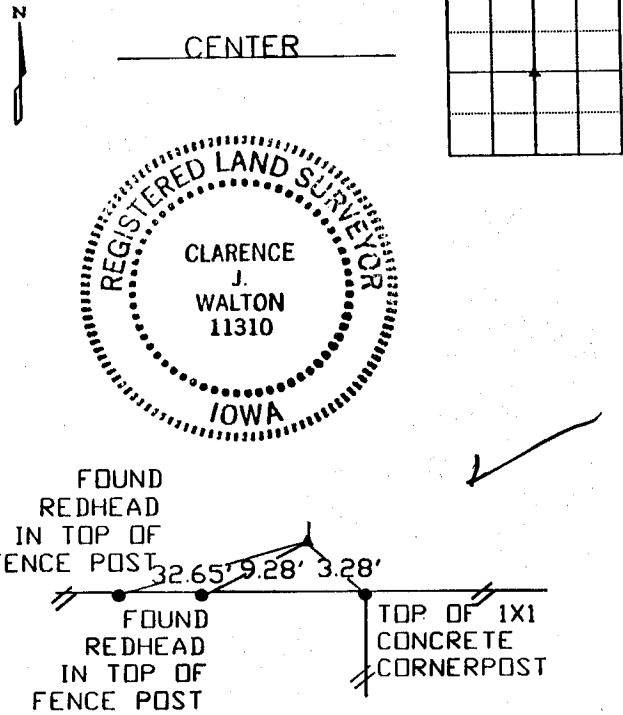
NO SCALE



PREVIOUSLY RECORDED IN BOOK _____ PAGE _____

MONUMENT DESCRIPTION AND HOW ESTABLISHED _____
FOUND 3/8" REBAR 6" BELOW ROAD USING COUNTY TIES

NO SCALE



PREVIOUSLY RECORDED IN BOOK _____ PAGE _____

MONUMENT DESCRIPTION AND HOW ESTABLISHED _____
FOUND 1" REBAR 1' BELOW GROUND USING COUNTY TIES

I hereby declare that this plat, survey or report was made by me or under my direct personal supervision and that I am a duly registered Land Surveyor under the laws of the State of Iowa.
Signed Clarence J. Walton Date 9/22/99
Clarence J. Walton L.S. Iowa Reg No. 11310
My Registration Renewal Date is December 31, 1999

CORNERS TO BE INDEXED			
CORNER	SECTION	TOWNSHIP	RANGE
E 1/4	28	T83N	R3W
CENTER	28	T83N	R3W

BRAIN ENGINEERING, INC.
777 10TH STREET
MARION, IOWA 52302
(319) 373-1318

23289-10

SECTION CORNER CERTIFICATE

LAND SURVEY MONUMENTS SITUATED IN SECTION 28, TOWNSHIP 83 NORTH,
RANGE 3 WEST, OF THE FIFTH PRINCIPAL MERIDIAN, Jones, COUNTY, IOWA.

PREVIOUSLY RECORDED IN BOOK _____ AT PAGE _____ .

FOR RECORDER'S USE

REASON FOR PREPARING CERTIFICATE:

- A) THERE IS NO CERTIFICATE FOR THE CORNER ON FILE WITH THE RECORDER OF THE COUNTY IN WHICH THE CORNER IS LOCATED.
- B) CORNER POSITION DIFFERS FROM THAT SHOWN IN THE PUBLIC RECORDS OF THE COUNTY IN WHICH THE CORNER IS LOCATED.
- C) THE CORNER MONUMENT HAS BEEN REPLACED OR MODIFIED.
- CO THE REFERENCE TIES REFERRED TO IN AN EXISTING PUBLIC RECORD ARE INCORRECT.

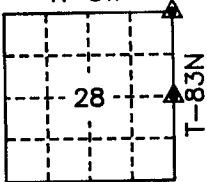
MONUMENT DESCRIPTION AND REMARKS:

NE CORNER - FOUND 1 3/4" x 1 3/4" x 15" WOOD STAKE WITH 1/2" x 24" IRON PIN
SET ON NORTH SIDE PROBES AND DUG FOUND NO OTHER EVIDENCE, STAKE SPLITS R.O.W.
FENCES SOUTH & IS ON LINE WITH SEC. FENCE WEST.
E 1/4 CORNER - DUG AND FOUND 6" x 6" x 1' LIMESTONE 1' BELOW SURFACE,
LOWERED STONE SET 5/8" x 24" IRON PIN ON TOP BURIED 6".

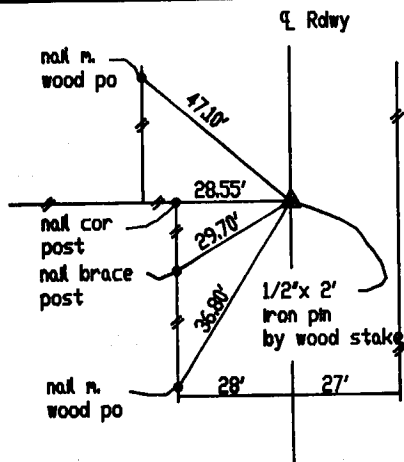
RECOVERY TIE DRAWING

NE COR. SEC 28 T83N R3W

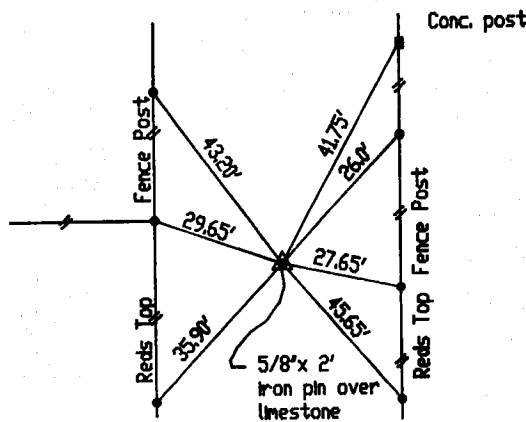
R-3W



E 1/4 COR SEC 28 T83N R3W



NOT TO SCALE



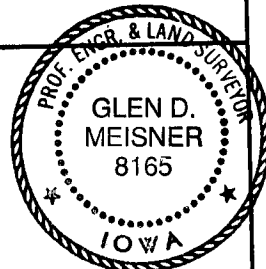
Distance slope meas. 2-25-93 ON CARD M.S.

Distance slope meas. ON CARD M.S.

CERTIFICATION

I, GLEN D. MEISNER, - CERTIFY THAT THE CORNER LOCATION(S) SHOWN ON THIS RECORD WERE DETERMINED BY ME OR UNDER MY DIRECTION AND CONTROL AND THAT THIS U.S. PUBLIC LAND SURVEY MONUMENT RECORD IS CORRECT AND COMPLETE TO THE BEST OF MY KNOWLEDGE AND BELIEF.

Glen D. Meisner 1-15-93
GLEN D. MEISNER L.S. NO. 8165 DATE



D E M E N T	<input type="checkbox"/> GOVERNMENT CORNER <input type="checkbox"/> PROPERTY CORNER FOUND <input type="checkbox"/> 5/8" X 30" W/ L.S. CAP SET <input type="checkbox"/> EXISTING FENCE LINE <input type="checkbox"/> PROPERTY LINE	US.S. PUBLIC LAND SURVEY RECORD JONES COUNTY PROJ. LC-714	H E	HALL AND HALL ENGINEERS, INC. 226 29TH STREET DRIVE S.E. CEDAR RAPIDS, IOWA 52403 319-362-9548
	DW RDV CHK APPR D N	PROJ No. LC-714		PROJ No. LC-714