

2005 1971

FILED
RECORDERS OFFICE
JONES COUNTY IOWA

05 JUN -8 AM 11:07

MARIE KRUTZFIELD
RECORDER 7.00 Pd

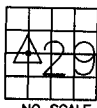
J.D. TJEPKES LS, 23428 RIDGE RD. ANAMOSA, IOWA, 52205 (319)462-6067

UNITED STATES PUBLIC LAND SURVEY CORNER CERTIFICATE

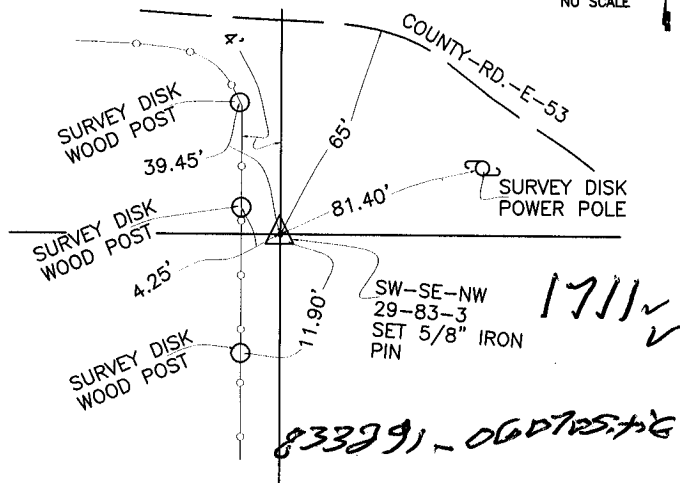
LAND SURVEY MONUMENTS SITUATED IN SECTION 29, TOWNSHIP 83
NORTH, RANGE 3 WEST OF THE 5TH P.M., JONES COUNTY, IOWA

CORNERS TO BE INDEXED

CORNER SECTION TOWNSHIP RANGE
SW-SE-NW 29 83N 3W



NO SCALE



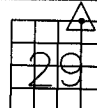
1711 ✓

833291-060705.tje

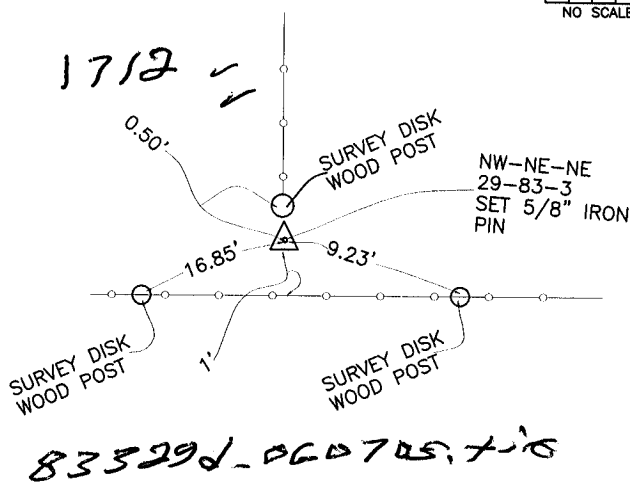
PREVIOUSLY RECORDED IN BOOK _____, PAGE _____
MONUMENT DESCRIPTION AND HOW ESTABLISHED _____
SET 5/8"X24" REBAR WITH YELLOW PLASTIC CAP LS 14807 PER
SECTION BREAKDOWN. SOUTHWEST CORNER, SOUTHEAST QUARTER,
NORTHWEST QUARTER, SECTION 29, TOWNSHIP 83 NORTH, RANGE
3 WEST OF THE 5TH PRINCIPAL MERIDIAN, JONES COUNTY, IOWA.
SET REFERENCE TIES AS INDICATED.

CORNERS TO BE INDEXED

CORNER SECTION TOWNSHIP RANGE
NW-NE-NE 29 83N 3W



NO SCALE



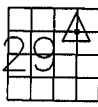
1712 ✓

833291-060705.tje

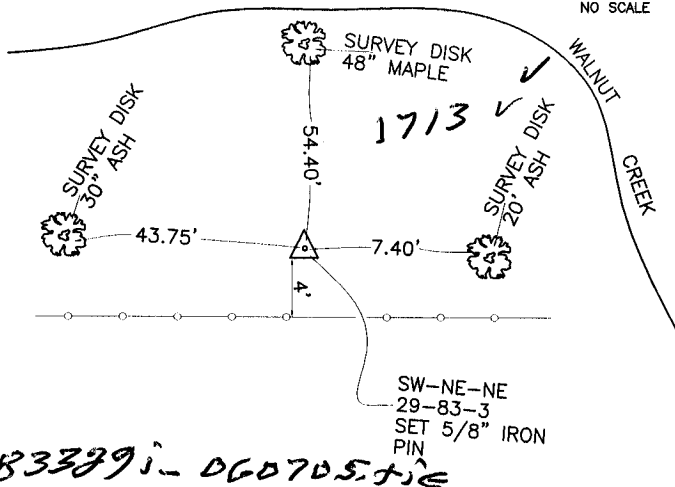
PREVIOUSLY RECORDED IN BOOK _____, PAGE _____
MONUMENT DESCRIPTION AND HOW ESTABLISHED _____
SET 5/8"X24" REBAR WITH YELLOW PLASTIC CAP LS 14807 PER
SECTION BREAKDOWN. NORTHWEST CORNER, NORTHEAST QUARTER,
NORTHEAST QUARTER, SECTION 29, TOWNSHIP 83 NORTH, RANGE
3 WEST OF THE 5TH PRINCIPAL MERIDIAN, JONES COUNTY, IOWA.
SET REFERENCE TIES AS INDICATED.

CORNERS TO BE INDEXED

CORNER SECTION TOWNSHIP RANGE
SW-NE-NE 29 83N 3W



NO SCALE



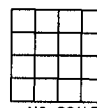
1713 ✓

833291-060705.tje

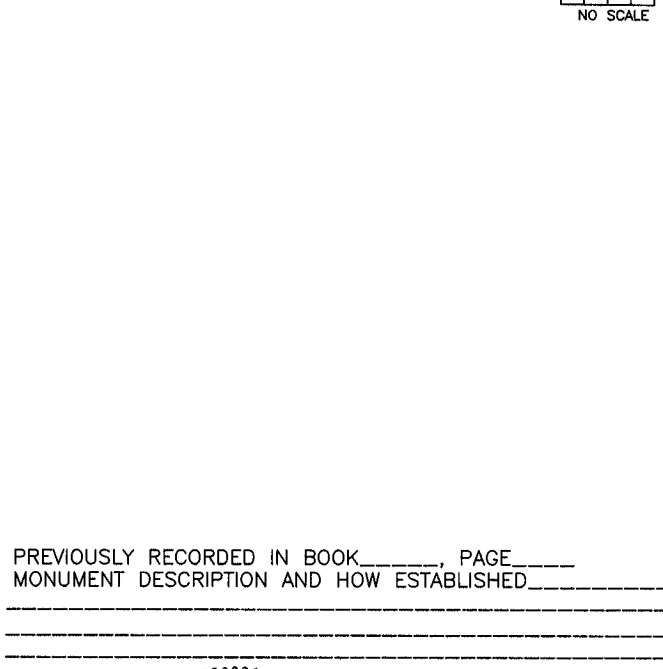
PREVIOUSLY RECORDED IN BOOK _____, PAGE _____
MONUMENT DESCRIPTION AND HOW ESTABLISHED _____
SET 5/8"X24" REBAR WITH YELLOW PLASTIC CAP LS 14807 PER
SECTION BREAKDOWN. SOUTHWEST CORNER, NORTHEAST QUARTER,
NORTHEAST QUARTER, SECTION 29, TOWNSHIP 83 NORTH, RANGE
3 WEST OF THE 5TH PRINCIPAL MERIDIAN, JONES COUNTY, IOWA.
SET REFERENCE TIES AS INDICATED.

CORNERS TO BE INDEXED

CORNER SECTION TOWNSHIP RANGE



NO SCALE

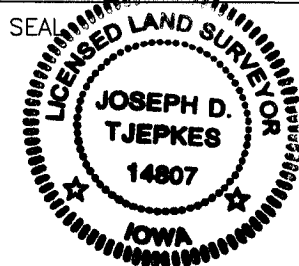


PREVIOUSLY RECORDED IN BOOK _____, PAGE _____
MONUMENT DESCRIPTION AND HOW ESTABLISHED _____

I hereby declare that this plat, survey or report was made by me or under my direct personal supervision and that I am a duly registered Land Surveyor under the laws of the State of Iowa.

Signed Joseph D. Tjepkes 6.07.05

Joseph D. Tjepkes L.S. Iowa Reg. No. 14807
My Registration Renewal Date is December 31, 2006



J.D. TJEPKES LS 14807
23428 RIDGE ROAD
ANAMOSA, IOWA 52205

AA