

1999 3426

FILED
RECORDERS OFFICE
JONES COUNTY IOWA

99 SEP 23 AM 10:52

MARIE KRUTZFIELD
RECORDER 6.00 Pd

BRAIN ENGINEERING, INC., 777 10TH STREET, MARION, IOWA 52302 PH. (319) 373-1318

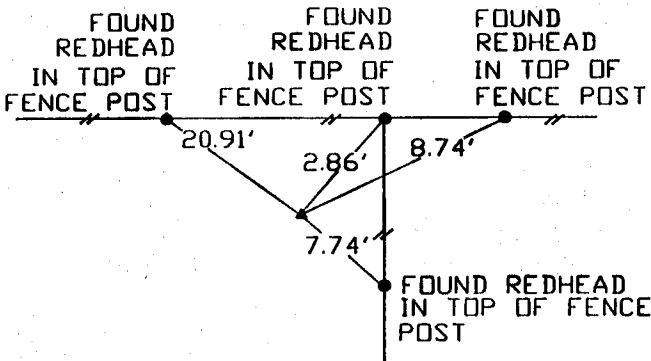
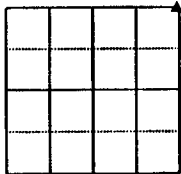
UNITED STATES PUBLIC LAND SURVEY CORNER CERTIFICATE

LAND SURVEY MONUMENTS SITUATED IN SECTION 29, TOWNSHIP 83 NORTH
RANGE 3 WEST OF THE 5TH P.M., _____ JONES _____ COUNTY, IOWA.

NO SCALE



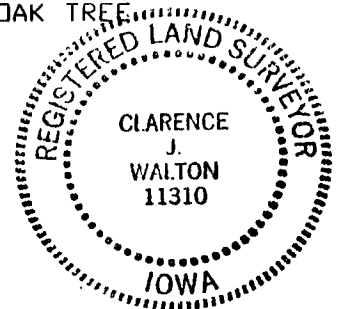
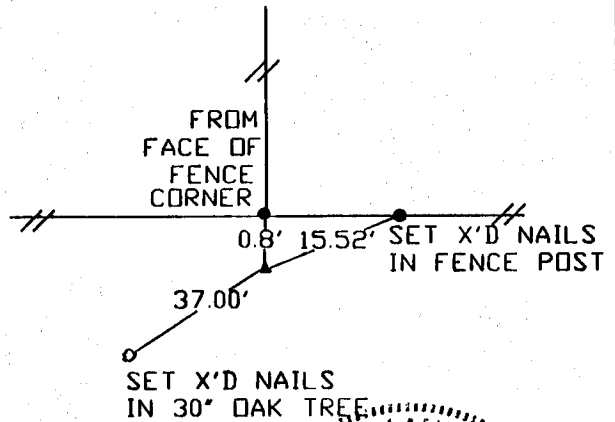
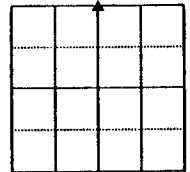
NE CORNER



NO SCALE



N 1/4



PREVIOUSLY RECORDED IN BOOK _____ PAGE _____

MONUMENT DESCRIPTION AND HOW ESTABLISHED _____

FOUND SCM FLUSH WITH GROUND

PREVIOUSLY RECORDED IN BOOK _____ PAGE _____

MONUMENT DESCRIPTION AND HOW ESTABLISHED _____

FOUND SCM 1.3" ABOVE GROUND

I hereby declare that this plat, survey or report was made by me or under my direct personal supervision and that I am a duly registered Land Surveyor under the laws of the State of Iowa.

Signed Clarence J. Walton Date 9/22/99
Clarence J. Walton L.S. Iowa Reg. No. 11310
My Registration Renewal Date Is December 31, 1999

CORNER	SECTION	TOWNSHIP	RANGE
NE CORNER	29	T83N	R3W
N 1/4	29	T83N	R3W

BRAIN ENGINEERING, INC.

777 10TH STREET
MARION, IOWA 52302
(319) 373-1318

23289-10

SECTION CORNER CERTIFICATE

LAND SURVEY MONUMENTS SITUATED IN SECTION 28, TOWNSHIP 83 NORTH,
RANGE 3 WEST, OF THE FIFTH PRINCIPAL MERIDIAN, Jones, COUNTY, IOWA.

PREVIOUSLY RECORDED IN BOOK AT PAGE .

FOR RECORDER'S USE

REASON FOR PREPARING CERTIFICATE:

- A) THERE IS NO CERTIFICATE FOR THE CORNER ON FILE WITH THE RECORDER OF THE COUNTY IN WHICH THE CORNER IS LOCATED.
- B) CORNER POSITION DIFFERS FROM THAT SHOWN IN THE PUBLIC RECORDS OF THE COUNTY IN WHICH THE CORNER IS LOCATED.
- C) THE CORNER MONUMENT HAS BEEN REPLACED OR MODIFIED.
- CO THE REFERENCE TIES REFERRED TO IN AN EXISTING PUBLIC RECORD ARE INCORRECT.

MONUMENT DESCRIPTION AND REMARKS:

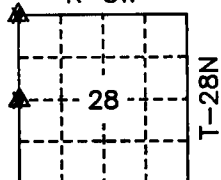
NW CORNER - FOUND CONCRETE MARKER ON WEST SIDE OF FENCE GOING SOUTH 2.8' SOUTH OF EAST WEST FENCE.

W 1/4 CORNER - FOUND 1/2" IRON PIN WITH R.L.S. CAP # 10185 - SURVEY APRIL 18, 1988.

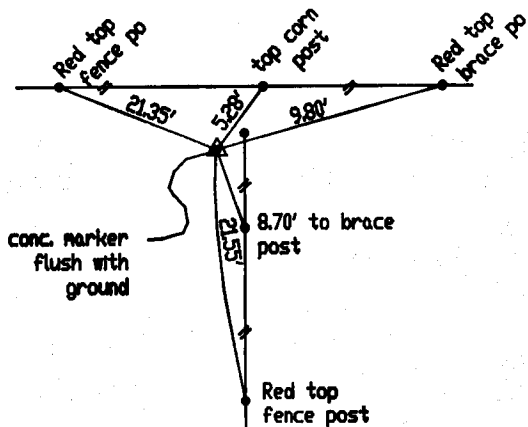
RECOVERY TIE DRAWING

NW COR. SEC 28 T83N R3W

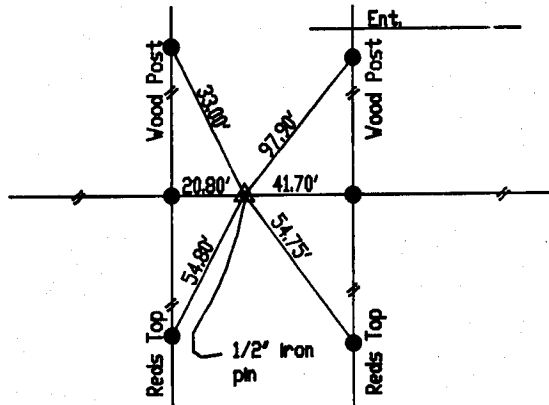
R-3W



W 1/4 COR SEC 28 T83N R3W



N
NOT TO SCALE



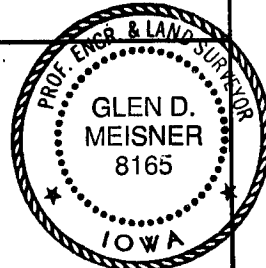
Distance slope meas. 2-25-93 ON CARD NE COR. SEC. 29. M.S.

Distance slope meas.

CERTIFICATION

I, GLEN D. MEISNER, - CERTIFY THAT THE CORNER LOCATION(S) SHOWN ON THIS RECORD WERE DETERMINED BY ME OR UNDER MY DIRECTION AND CONTROL AND THAT THIS U.S. PUBLIC LAND SURVEY MONUMENT RECORD IS CORRECT AND COMPLETE TO THE BEST OF MY KNOWLEDGE AND BELIEF.

Glen D. Meisner 1-15-93
GLEN D. MEISNER L.S. NO. 8165 DATE



D T M E N G I N E E R	△ GOVERNMENT CORNER ○ PROPERTY CORNER FOUND ○ 5/8" X 30" W/ L.S. CAP SEC - - - EXISTING FENCE LINE ——— PROPERTY LINE	U.S. PUBLIC LAND SURVEY RECORD JONES COUNTY PROJ. LC-714	HALL AND HALL ENGINEERS, INC. 226 29TH STREET DRIVE S.E. CEDAR RAPIDS, IOWA 52403 319-362-9548
	DW RDV	CHK	PROJ No. LC-714