

# SECTION CORNER CERTIFICATE

LAND SURVEY MONUMENTS SITUATED IN SECTION 28, TOWNSHIP 83 NORTH,  
RANGE 3 WEST, OF THE FIFTH PRINCIPAL MERIDIAN, Jones, COUNTY, IOWA

PREVIOUSLY RECORDED IN BOOK \_\_\_\_\_ AT PAGE \_\_\_\_\_ .

FOR RECORDER'S USE

**REASON FOR PREPARING CERTIFICATE**

- A) THERE IS NO CERTIFICATE FOR THE CORNER ON FILE WITH THE RECORDER OF THE COUNTY IN WHICH THE CORNER IS LOCATED.
- B) CORNER POSITION DIFFERS FROM THAT SHOWN IN THE PUBLIC RECORDS OF THE COUNTY IN WHICH THE CORNER IS LOCATED.
- C) THE CORNER MONUMENT HAS BEEN REPLACED OR MODIFIED.
- CO THE REFERENCE TIES REFERRED TO IN AN EXISTING PUBLIC RECORD ARE INCORRECT.

**MONUMENT DESCRIPTION AND REMARKS:**

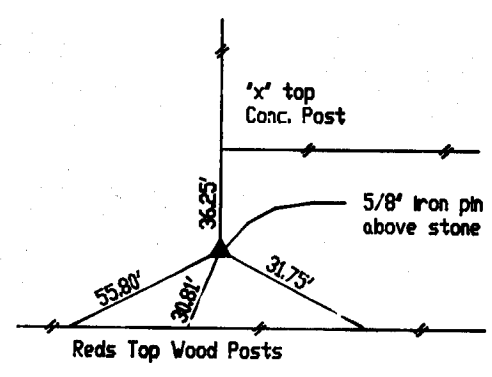
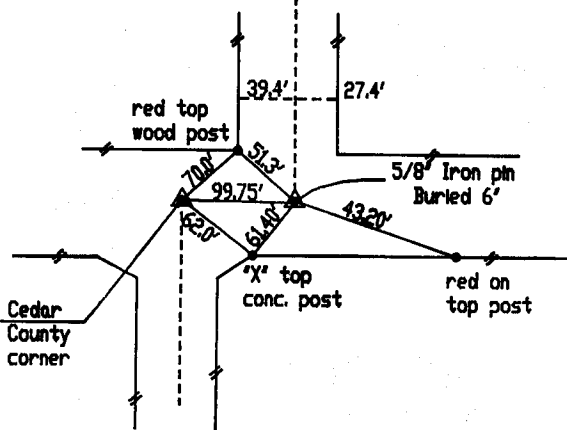
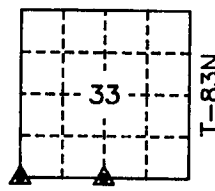
SW CORNER - FOUND 5/8' IRON PIN BURIED 6' DOWN FROM PREVIOUS TIES.  
S 1/4 CORNER- DUG ON FENCE LINE NORTH FOUND 18"x 10"x 24" GRANITE STONE  
REMOVED STONE FOUND PIECES OF WOOD STAKE UNDER STONE REPLACED STONE  
AND PLACE 5/8"x 18" IRON PIN ABOVE STONE BURIED 1' BELOW SURFACE.

## RECOVERY TIE DRAWING

SW COR. SEC 33 T83N R3W

R-3W

S 1/4 COR SEC 33 T83N R3W



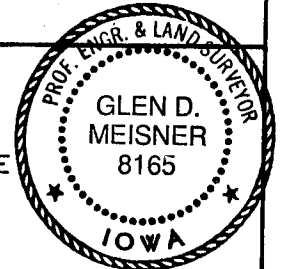
Distance slope meas. 2-25-93 ON CAD. M.S.

Distance slope meas. 2-25-93 ON CAD. M.S.

**CERTIFICATION**

I, GLEN D. MEISNER, - CERTIFY THAT THE CORNER LOCATION(S) SHOWN ON THIS RECORD WERE DETERMINED BY ME OR UNDER MY DIRECTION AND CONTROL AND THAT THIS U.S. PUBLIC LAND SURVEY MONUMENT RECORD IS CORRECT AND COMPLETE TO THE BEST OF MY KNOWLEDGE AND BELIEF.

Glen D. Meisner 1-15-93  
GLEN D. MEISNER L.S. NO. 8165 DATE



- △ GOVERNMENT CORNER
- PROPERTY CORNER FOUND
- 5/8" X 30" W/ L.S. CAP SET
- x- EXISTING FENCE LINE
- PROPERTY LINE

US.S. PUBLIC LAND SURVEY RECORD

JONES COUNTY PROJ. LC-714

**HALL AND HALL ENGINEERS, INC.**  
226 29TH STREET DRIVE S.E.  
CEDAR RAPIDS, IOWA 52403  
319-362-9548

D  
W  
RDV

C  
H  
K

A  
M  
P

D  
A  
M

C  
H  
K

No. \_\_\_\_\_

Proj. No. \_\_\_\_\_

LC-714