

2000 0827

FILED  
RECORDERS OFFICE  
JONES COUNTY IOWA

*Bome*

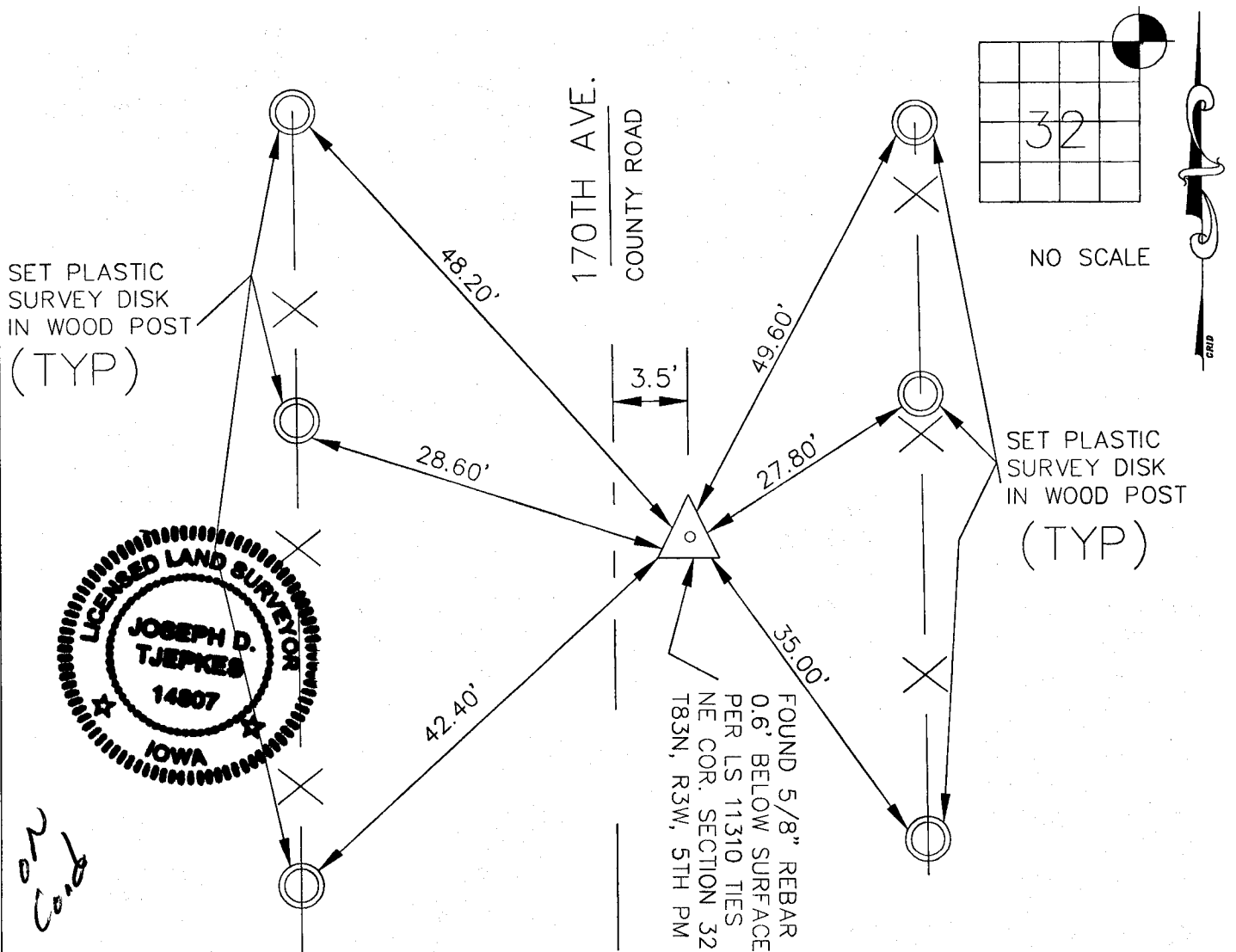
00 MAR 10 AM 8:35

MARIE KRUTZFIELD  
RECORDER *NO FEE*

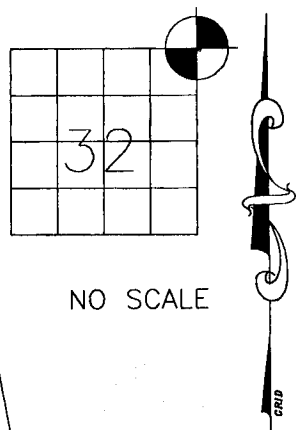
JONES COUNTY ENGINEER, 19501 HWY. 64, ANAMOSA, IOWA

# UNITED STATES PUBLIC LAND SURVEY CORNER CERTIFICATE

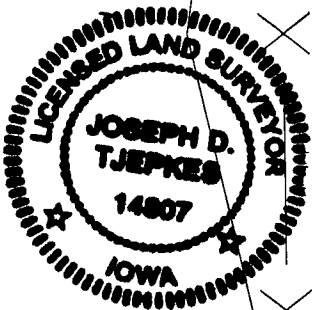
LAND SURVEY MONUMENTS SITUATED IN SECTION 32, TOWNSHIP 83  
NORTH, RANGE 3 WEST OF THE 5TH P.M., JONES COUNTY, IOWA



SET PLASTIC SURVEY DISK IN WOOD POST (TYP)



SET PLASTIC SURVEY DISK IN WOOD POST (TYP)



*on Card*

PREVIOUSLY RECORDED IN BOOK 1999, PAGE 3431  
 MONUMENT DESCRIPTION AND HOW ESTABLISHED FOUND  
5/8" REBAR 0.6' BELOW ROAD SURFACE PER TIES FROM CORNER CERTIFICATE  
LS 11310 AS RECORDED IN BOOK AND PAGE AS INDICATED ABOVE IN THE  
JONES COUNTY RECORDERS OFFICE. SET NEW TIES AS INDICATED TO  
PERPETUATE MONUMENT.

I hereby declare that this plat, survey or report was made by me or under my direct personal supervision and that I am a duly registered Land Surveyor under the laws of the State of Iowa.

Signed:  
*Joseph D. Tjepkes 3-10-2000*

Joseph D. Tjepkes L.S. Iowa Reg. No. 14807  
 My Registration Renewal Date is December 31, 2000

CORNERS TO BE INDEXED			
CORNER	SECTION	TOWNSHIP	RANGE
NE	32	83N	3W

JONES COUNTY ENGINEER  
 19501 HWY. 64,  
 ANAMOSA, IOWA

1999 3431

FILED  
RECORDERS OFFICE  
JONES COUNTY IOWA

99 SEP 23 AM 10:58

MARIE KRUTZFIELD  
RECORDER 6.00pd

BRAIN ENGINEERING, INC., 777 10TH STREET, MARION, IOWA 52302 PH. (319) 373-1318

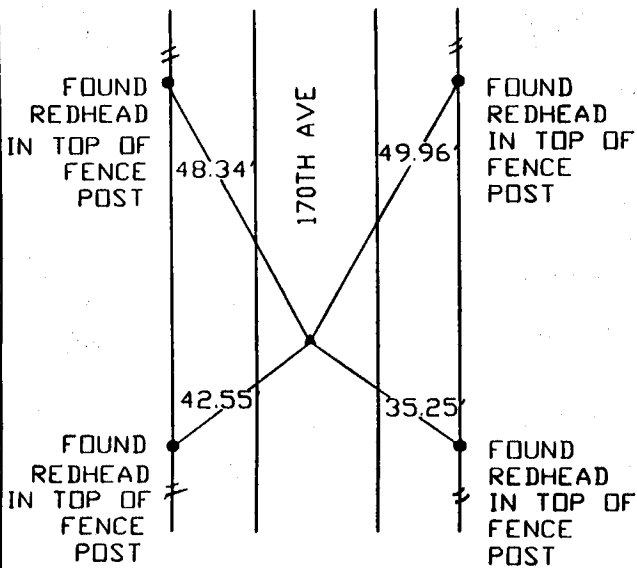
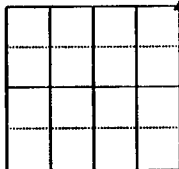
# UNITED STATES PUBLIC LAND SURVEY CORNER CERTIFICATE

LAND SURVEY MONUMENTS SITUATED IN SECTION 32, TOWNSHIP 83 NORTH  
RANGE 3 WEST OF THE 5TH P.M., \_\_\_\_\_ JONES \_\_\_\_\_ COUNTY, IOWA.

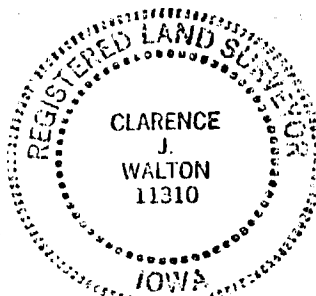
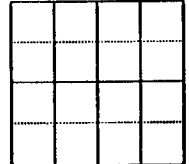
NO SCALE



NE CORNER



NO SCALE



PREVIOUSLY RECORDED IN BOOK \_\_\_\_\_ PAGE \_\_\_\_\_  
MONUMENT DESCRIPTION AND HOW ESTABLISHED \_\_\_\_\_  
FOUND 5/8" REBAR 7" BELOW ROAD

PREVIOUSLY RECORDED IN BOOK \_\_\_\_\_ PAGE \_\_\_\_\_  
MONUMENT DESCRIPTION AND HOW ESTABLISHED \_\_\_\_\_

I hereby declare that this plat, survey or report was made by me or under my direct personal supervision and that I am a duly registered Land Surveyor under the laws of the State of Iowa.

Signed Clarence J. Walton Date 9/22/99  
Clarence J. Walton L.S. Iowa Reg No. 11310  
My Registration Renewal Date Is December 31, 1999

CORNERS TO BE INDEXED  
CORNER SECTION TOWNSHIP RANGE  
NE CORNER 32 T83N R3W

**BRAIN ENGINEERING, INC.**  
777 10TH STREET  
MARION, IOWA 52302  
(319) 373-1318

23289-10

# SECTION CORNER CERTIFICATE

LAND SURVEY MONUMENTS SITUATED IN SECTION 33, TOWNSHIP 83 NORTH,  
RANGE 3 WEST, OF THE FIFTH PRINCIPAL MERIDIAN, Jones, COUNTY, IOWA.

PREVIOUSLY RECORDED IN BOOK \_\_\_\_\_ AT PAGE \_\_\_\_\_ .

FOR RECORDER'S USE

**REASON FOR PREPARING CERTIFICATE:**

- A) THERE IS NO CERTIFICATE FOR THE CORNER ON FILE WITH THE RECORDER OF THE COUNTY IN WHICH THE CORNER IS LOCATED.
- B) CORNER POSITION DIFFERS FROM THAT SHOWN IN THE PUBLIC RECORDS OF THE COUNTY IN WHICH THE CORNER IS LOCATED.
- C) THE CORNER MONUMENT HAS BEEN REPLACED OR MODIFIED.
- CO THE REFERENCE TIES REFERRED TO IN AN EXISTING PUBLIC RECORD ARE INCORRECT.

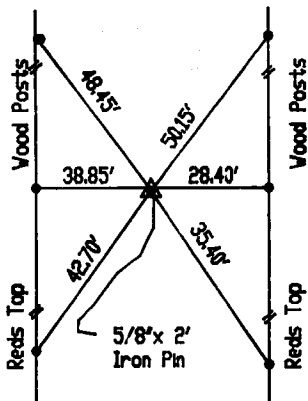
**MONUMENT DESCRIPTION AND REMARKS:**

NW CORNER - FOUND 5/8" x 24" IRON PIN PROBED UNDER PIN DOWN 2' FOUND NOTHING  
PIN WAS USED AS CORNER BY LAND SURVEY IN 1988

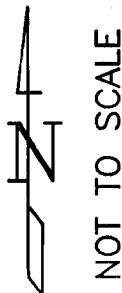
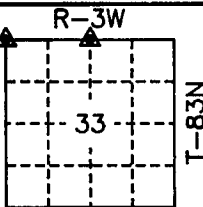
N 1/4 CORNER - DUG LARGE AREA IN CORNER LOCATION FOUND NOTHING SET 1" x 4'  
IRON PIN BURIED 8" AND 3.7 FEET EAST OF NORTH SOUTH FENCE.

## RECOVERY TIE DRAWING

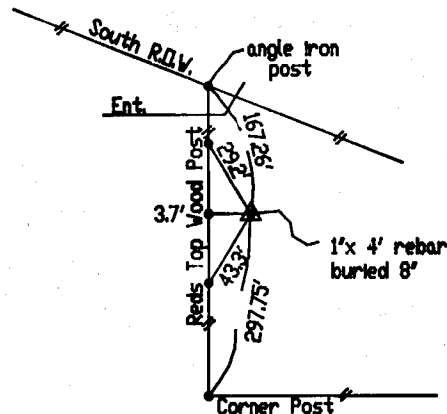
NW COR. SEC 33 T83N R3W



Distance slope meas. 2-25-93 ON CARD NE 32 M.S.



N 1/4 COR SEC 33 T83N R3W

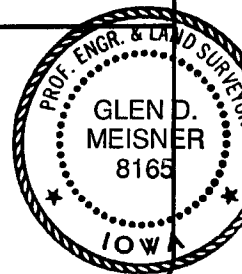


2-25-93 ON CARD M.S.

**CERTIFICATION**

I, GLEN D. MEISNER, - CERTIFY THAT THE CORNER LOCATION(S) SHOWN ON THIS RECORD WERE DETERMINED BY ME OR UNDER MY DIRECTION AND CONTROL AND THAT THIS U.S. PUBLIC LAND SURVEY MONUMENT RECORD IS CORRECT AND COMPLETE TO THE BEST OF MY KNOWLEDGE AND BELIEF.

Glen D. Meisner 1-15-93  
GLEN D. MEISNER L.S. NO. 8165 DATE



- △ GOVERNMENT CORNER
- PROPERTY CORNER FOUND
- 5/8" X 30" W/ L.S. CAP SET
- EXISTING FENCE LINE
- PROPERTY LINE

US.S. PUBLIC LAND SURVEY RECORD

JONES COUNTY PROJ. LC-714

**HALL AND HALL ENGINEERS, INC.**

226 29TH STREET DRIVE S.E.  
CEDAR RAPIDS, IOWA 52403  
319-362-9548

D  
W  
N RDV

C  
H  
K

A  
P  
R

D  
A  
M

C  
A  
L

F  
B  
No

PROJ  
No LC-714