

UNITED STATES PUBLIC LAND SURVEY CORNER CERTIFICATE

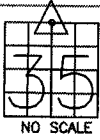
LAND SURVEY MONUMENTS SITUATED IN SECTION 35, TOWNSHIP 83
NORTH, RANGE 3 WEST OF THE 5TH P.M., JONES COUNTY, IOWA

CORNERS TO BE INDEXED

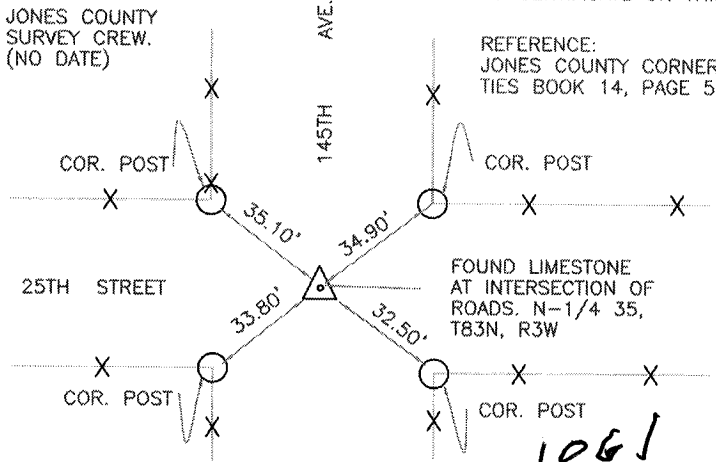
CORNER SECTION TOWNSHIP RANGE
N-1/4 35 83N 3W

OFFICE FILE NO.

83335c_111803



JONES COUNTY SURVEY CREW. (NO DATE)



NO CERTIFICATE ON THIS.

REFERENCE:
JONES COUNTY CORNER TIES BOOK 14, PAGE 51

FOUND LIMESTONE AT INTERSECTION OF ROADS. N-1/4 35, T83N, R3W

1061

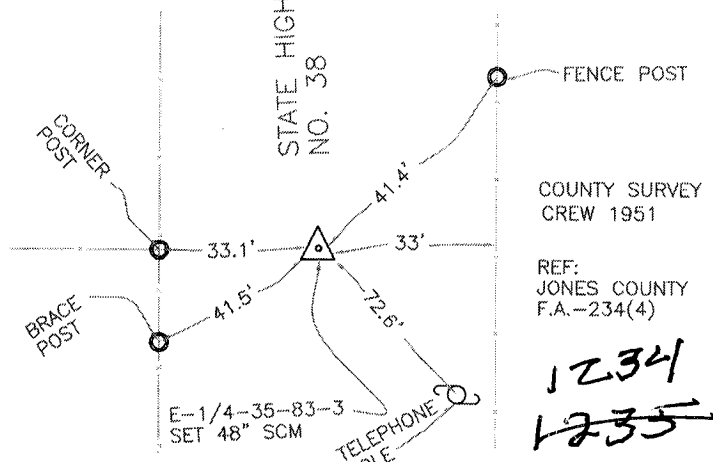
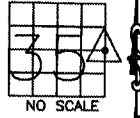
PREVIOUSLY RECORDED IN BOOK N/A, PAGE N/A
MONUMENT DESCRIPTION AND HOW ESTABLISHED FOUND
10"x12"x6" LIMESTONE 18" BELOW ROAD SURFACE. TIED OUT AS INDICATED. NORTH QUARTER CORNER SECTION 35, TOWNSHIP 83 NORTH, RANGE 3 WEST OF THE 5TH PRINCIPAL MERIDIAN, JONES COUNTY, IOWA

CORNERS TO BE INDEXED

CORNER SECTION TOWNSHIP RANGE
E-1/4 35 83N 3W

OFFICE FILE NO.

83335o_111803



COUNTY SURVEY CREW 1951

REF:
JONES COUNTY F.A.-234(4)

1234
1235

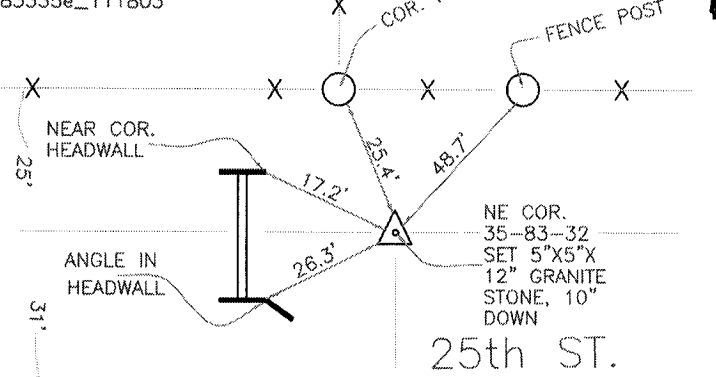
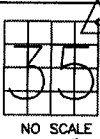
PREVIOUSLY RECORDED IN BOOK _____, PAGE _____
MONUMENT DESCRIPTION AND HOW ESTABLISHED 1951
COUNTY SURVEY CREW SET 48" STANDARD CONCRETE MONUMENT IN THE POSITION INDICATED AND SET TIES. EAST QUARTER CORNER SECTION 35, TOWNSHIP 83 NORTH, RANGE 3 WEST OF THE 5TH PRINCIPAL MERIDIAN, JONES COUNTY, IOWA.

CORNERS TO BE INDEXED

CORNER SECTION TOWNSHIP RANGE
NORTHEAST 35 83N 3W

OFFICE FILE NO.

83335e_111803



NE COR. 35-83-32 SET 5"x5"x12" GRANITE STONE, 10" DOWN

25th ST.

1235
1236

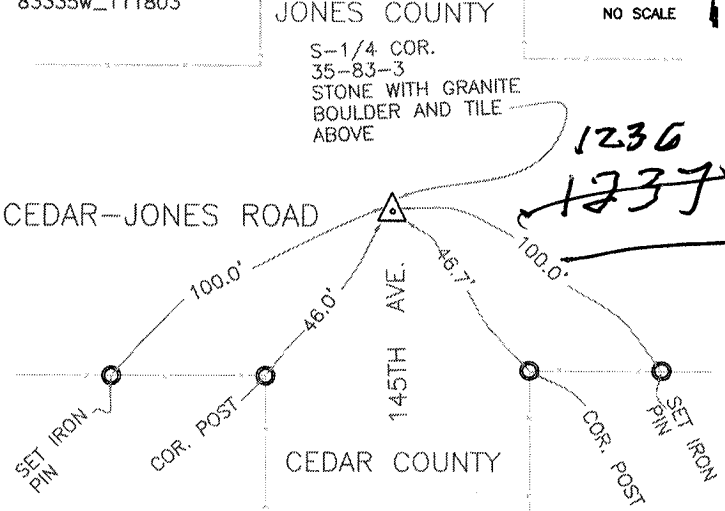
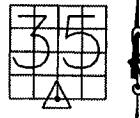
COUNTY SURVEY CREW 1951
REF:
JONES COUNTY F.A.-234(4)
PREVIOUSLY RECORDED IN BOOK _____, PAGE _____
MONUMENT DESCRIPTION AND HOW ESTABLISHED 1951
COUNTY SURVEY CREW SET 5"x5"x12" GRANITE STONE 10" BELOW SURFACE IN THE POSITION INDICATED AND SET TIES. NORTHEAST CORNER SECTION 35, TOWNSHIP 83 NORTH, RANGE 3 WEST OF THE 5TH PRINCIPAL MERIDIAN, JONES COUNTY, IOWA.

CORNERS TO BE INDEXED

CORNER SECTION TOWNSHIP RANGE
S-1/4 35 83N 3W

OFFICE FILE NO.

83335w_111803



JONES COUNTY
S-1/4 COR. 35-83-3
STONE WITH GRANITE BOULDER AND TILE ABOVE

1236
1237

PREVIOUSLY RECORDED IN BOOK _____, PAGE _____
MONUMENT DESCRIPTION AND HOW ESTABLISHED THIS
INFORMATION FROM CEDAR COUNTY WITH NO DATE. STONE WITH GRANITE BOULDER AND TILE ABOVE ALONG WITH TIES INDICATED ON CARD. DATE PROBABLY (1951) SOUTH QUARTER CORNER SECTION 35, TOWNSHIP 83 NORTH, RANGE 3 WEST OF THE 5TH PRINCIPAL MERIDIAN, JONES COUNTY, IOWA.

I hereby declare that this plat, survey or report was made by me or under my direct personal supervision and that I am a duly registered Land Surveyor under the laws of the State of Iowa.

Signed:

SEAL

JONES COUNTY ENGINEER'S OFFICE

19501 HWY. 64,
ANAMOSA, IOWA,
52205 (319)462-3785