

Instrument #: 2019-0352
 02/01/2019 12:03:54 PM Total Pages: 1
 ZSC SECTION CORNER CERTIFICATE
 Recording Fee: \$7.00 Transfer Tax: \$0
 Sheri L. Jones, Recorder, Jones County Iowa



RETURN TO &
 PREPARED BY: LEO P. BONIFAZI SCHNOOR-BONIFAZI ENGINEERING & SURVEYING LC, 431 FIFTH AVENUE SW, CEDAR RAPIDS, IA 52404 319-298-8888

UNITED STATES PUBLIC LAND SURVEY CORNER CERTIFICATE

Land Survey Monuments Situated in Section 36, Township 83 North, Range 3 West of the Fifth Principal Meridian, JONES County, Iowa.

Reason for filing: a. No certificate of record found. b. Monument or ties found differ from record. c. Replaced section corner.

SOUTHWEST CORNER - FOUND A 4"Ø CONCRETE MONUMENT WITH A 1/2" REBAR 24" DEEP USING PREVIOUS CORNER CERTIFICATE RECORDED IN BOOK 2006 PAGE 2936 AT JONES COUNTY RECORDER'S OFFICE. SET A 5/8"Ø REBAR WITH ORANGE PLASTIC CAP #13480 OVER FOUND MONUMENT FOR EASIER RECOVERY. SET REFERENCE TIES AS SHOWN BELOW.

SOUTH QUARTER CORNER - NO CORNER CERTIFICATE FOUND AT COUNTY RECORDER'S OR ENGINEER'S OFFICE. SET A 5/8"Ø REBAR WITH ORANGE PLASTIC CAP #13480 ON LINE BETWEEN THE SOUTHEAST AND SOUTHWEST SECTION CORNERS AND IN LINE WITH AN OLD EXISTING FENCE LINE RUNNING NORTH.

SOUTHWEST CORNER
36-83-3W

N: 3452558.72
E: 5560029.44

FOUND CM WITH 1/2"Ø REBAR 24" DEEP. PLACED 12" 5/8"Ø REBAR WITH OPC #13480 OVER TOP

SET 5/8"Ø REBAR WITH OPC # 13480

NORTHWEST CORNER
1-82-3W

N: 717964.65
E: 2279143.21

NORTH QUARTER CORNER
1-82-3W

SET 5/8"Ø REBAR WITH OPC # 13480

N: 718020.54
E: 2281828.90

SET 5/8"Ø REBAR NEXT TO FIBER OPTIC SIGN

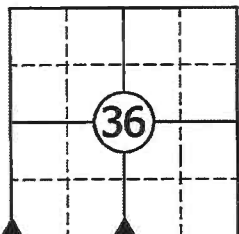
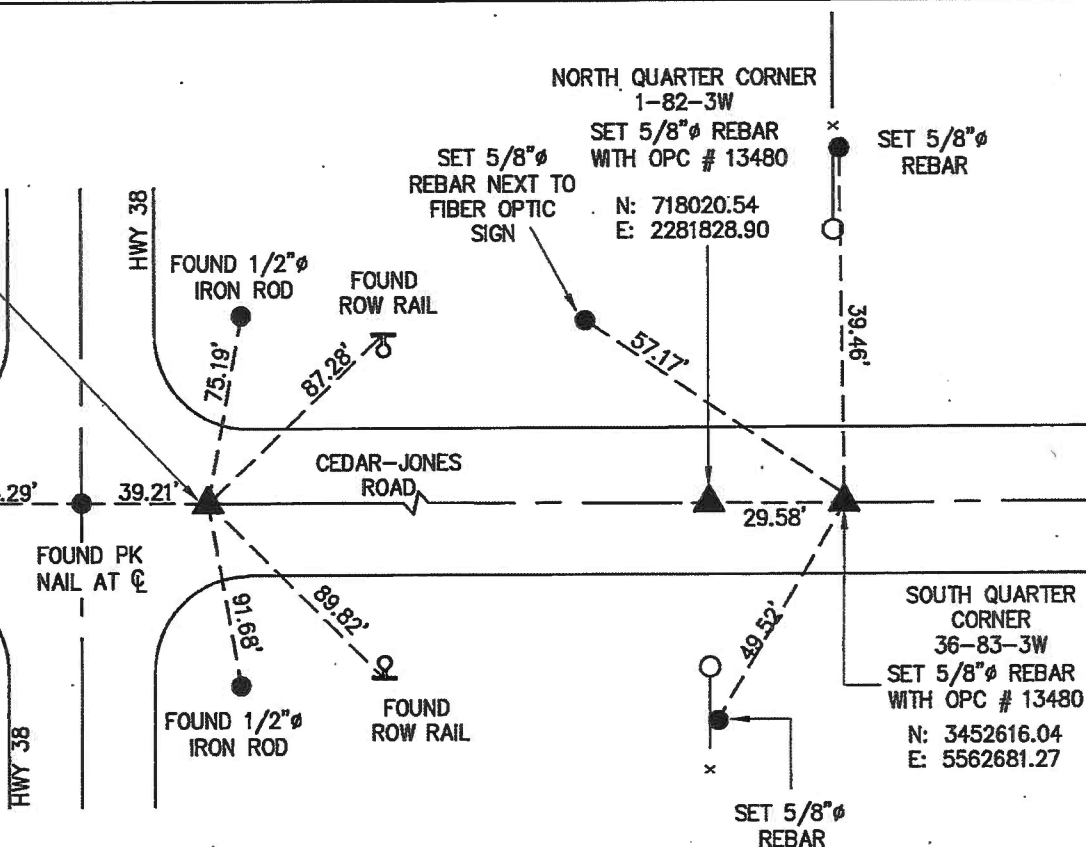
SET 5/8"Ø REBAR

SOUTH QUARTER CORNER
36-83-3W

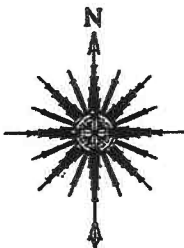
SET 5/8"Ø REBAR WITH OPC # 13480

N: 3452616.04
E: 5562681.27

SET 5/8"Ø REBAR



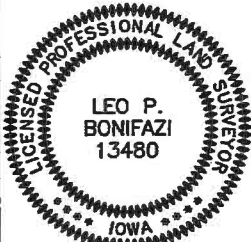
CORNERS TO BE INDEXED



COORDINATES LISTED HEREON ARE DERIVED FROM THE IOWA DEPARTMENT OF TRANSPORTATION REAL TIME NETWORK COLLECTED IN THE NAD83(2011) (Epoch 2010.0000) NETWORK REF FRAME AND ARE PROVIDED FOR USE IN RECOVERY OF MONUMENT ONLY.

SOUTH QUARTER CORNER 36-83-3W
 SOUTHWEST CORNER 36-83-3W

JOB:	17112
DRAWN:	D. THOMA
NOT TO SCALE	
DATE:	1/29/2019



I HEREBY CERTIFY THAT THIS LAND SURVEYING DOCUMENT WAS PREPARED AND THE RELATED SURVEY WORK WAS PERFORMED BY ME OR UNDER MY DIRECT PERSONAL SUPERVISION AND THAT I AM A DULY LICENSED PROFESSIONAL LAND SURVEYOR UNDER THE LAWS OF THE STATE OF IOWA.

SIGNATURE: *Leo P. Bonifazi* DATE: 1-28-19
 LEO P. BONIFAZI
 LICENSE NO. 13480
 SHEETS COVERED BY THIS SEAL THIS SHEET ONLY

MY LICENSE RENEWAL DATE IS DECEMBER 31, 2019

SCHNOOR-BONIFAZI ENGINEERING & SURVEYING, LC
 431 FIFTH AVENUE SW
 CEDAR RAPIDS, IA 52404
 (319) 298-8888 (PHONE)
 s-b-engineering.com



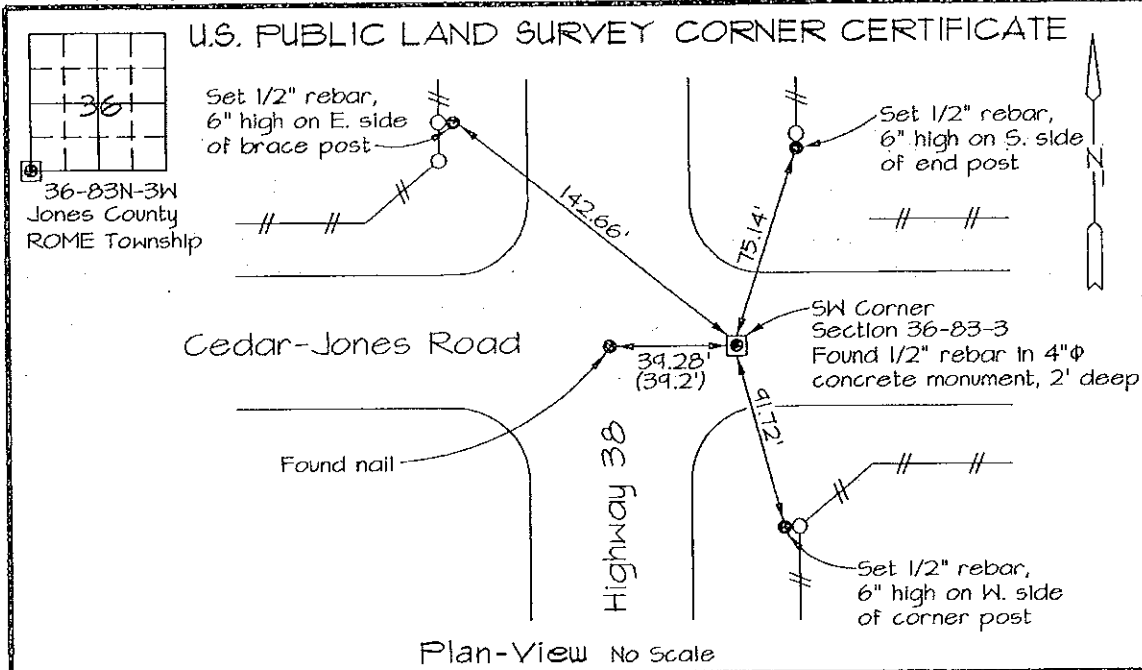
2006 2936

FILED
RECORDERS OFFICE
JONES COUNTY IOWA

06 AUG -3 AM 10:56

LARKIE KRUTZFIELD
RECORDER 7.00 pd

Prepared by: Richard M. Kordick, P.E., L.S., 120 East Main, Suite D, Anamosa, IA 52205 Phone: (319) 462-4498



Section corner location: SW Corner, Section 36-83-3

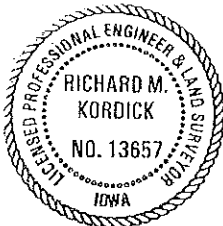
Reason for corner tie:

- A) There is no certificate for the corner on file with the recorder.
- B) Corner position differs from previously recorded certificate recorded in book , page
- C) Corner monument was replaced or modified.
- D) Reference ties in previously recorded certificate recorded in book , page are incorrect or missing.

Research at the recorder's office, auditor's office, and engineer's office revealed the following:
A plat in Cedar County Recorder's Office Plat Bk. E - Pg. 61 called for a 1/2" rebar set in concrete.
A plat in Jones County Recorder's Office Plat Bk. H - Pg. 17 called for a "S.C.M. from IA D.O.T. corner ties". IA D.O.T. corner ties called for a Conc. Monument at this corner.

Field search performed was as follows:
Field search was performed with a metal detector and excavation.

Monument found or set:
A 1/2" rebar in 4"Ø concrete monument, 2' deep, was found and used as the corner.



I hereby certify that this land surveying document was prepared and the related survey work was performed by me or under my direct personal supervision and that I am a duly licensed Land Surveyor under the laws of the State of Iowa.

Richard M. Kordick 7/28/2006
Richard M. Kordick date
License number 13657
My license renewal date is December 31, 2007.
Pages or sheets covered by this seal: 1 of 1

LEGEND:

- Section Corner as noted
- Ø Power Pole
- Section line
- - - Centerline
- ||| Existing Fence
- () Recorded Dist.

Kordick Surveying & Engineering
120 East Main, Suite D
Anamosa, Iowa 52205
(319) 462-4498

U.S. Public Land
Survey Corner Certificate

Project: Plat of Survey
Parcel No. 2006-88
Proprietor: Dean Ulrich

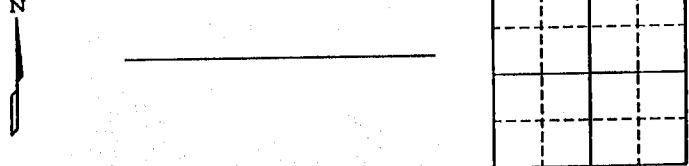
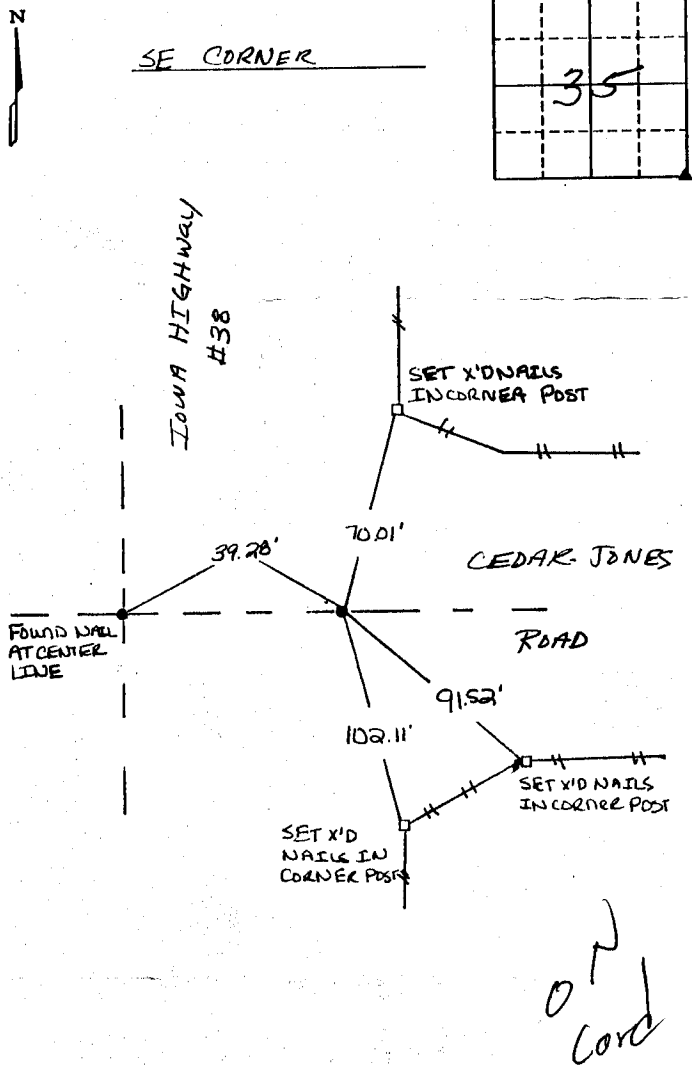
Field Bk
06058
Date
7-28-06
Job No.
06058
Sheet
1 of 1

UNITED STATES PUBLIC LAND SURVEY CORNER CERTIFICATE

LAND SURVEY MONUMENTS SITUATED IN SECTION 35, TOWNSHIP 83 NORTH
RANGE 3 WEST OF THE 5TH P.M., JONES COUNTY, IOWA.

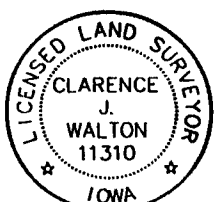
NO SCALE

NO SCALE



PREVIOUSLY RECORDED IN BOOK _____ PAGE _____
 MONUMENT DESCRIPTION AND HOW ESTABLISHED _____
FOUND 1/2" REBAR IN CONCRETE 2' BELOW
PER CEDAR COUNTY TIES

PREVIOUSLY RECORDED IN BOOK _____ PAGE _____
 MONUMENT DESCRIPTION AND HOW ESTABLISHED _____



I hereby certify that this land surveying document and the related survey work was performed by me or under my direct personal supervision and that I am a duly licensed Land Surveyor under the laws of the State of Iowa.
 Signed Clarence J. Walton Date 2/19/98
 Clarence J. Walton, L.S.
 My License Renewal Date is December 31, 1999
 License Number 11310
 Pages or sheets covered by this seal: 1 OF 1

CORNERS TO BE INDEXED
 CORNER SECTION TOWNSHIP RANGE
SE 35 T83N R3W

BRAIN ENGINEERING, INC.
 777 10TH STREET
 MARION, IOWA 52302
 (319) 373-1318