

Instrument #: 2018-3481  
 12/28/2018 09:39:10 AM Total Pages: 1  
 ZSC SECTION CORNER CERTIFICATE  
 Recording Fee: \$7.00 Transfer Tax: \$0  
 Sheri L. Jones, Recorder, Jones County Iowa



RETURN TO &

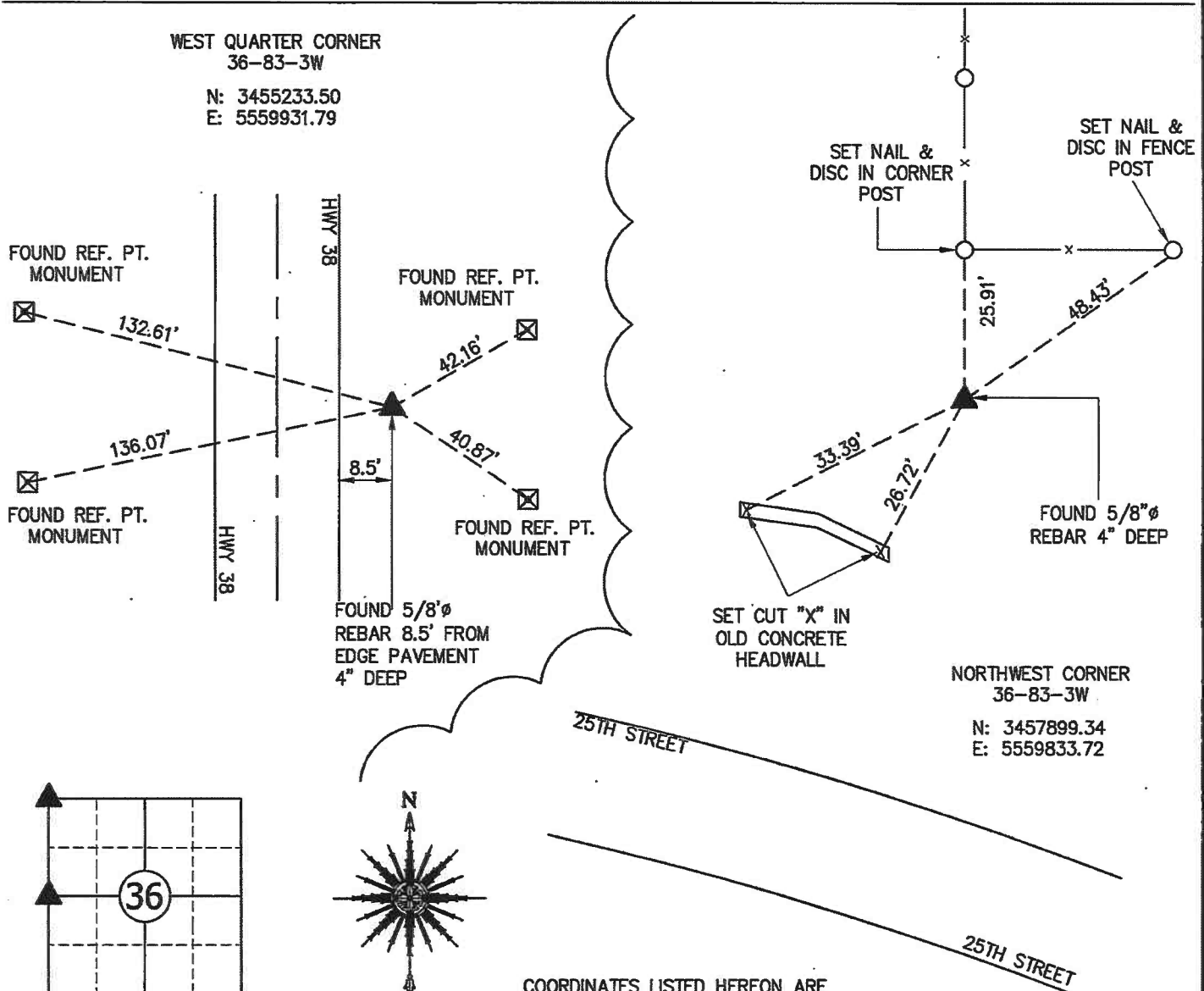
PREPARED BY: LEO P. BONIFAZI SCHNOOR-BONIFAZI ENGINEERING & SURVEYING LC, 431 FIFTH AVENUE SW, CEDAR RAPIDS, IA 52404 319-298-8888

**UNITED STATES PUBLIC LAND SURVEY CORNER CERTIFICATE**

Land Survey Monuments Situated in Section 36, Township 83 North, Range 3 West of the Fifth Principal Meridian, JONES County, Iowa.  
 Reason for filing:  a. No certificate of record found.  b. Monument or ties found differ from record.  c. Replaced section corner.

**WEST QUARTER CORNER - NO CORNER CERTIFICATE FOUND AT COUNTY RECORDER'S OR ENGINEER'S OFFICE. FOUND A 5/8"Ø REBAR 19.5' EAST OF ¢ HWY 38 USING OLD ROAD PLANS WHICH DESCRIBE LOCATION AS 20.0' RT. ACCEPTED FOUND 5/8"Ø REBAR AS THE SECTION CORNER MONUMENT AND USED EXISTING CONCRETE REFERENCE MONUMENTS AS REFERENCE TIES.**

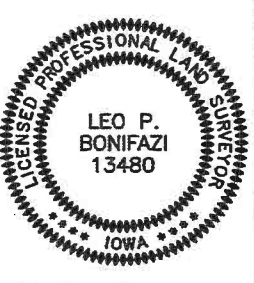
**NORTHWEST CORNER - FOUND A 5/8"Ø REBAR USING AN UNCERTIFIED CORNER TIE FROM THE JONES COUNTY ENGINEER'S OFFICE. SET REFERENCE TIES AS SHOWN.**



COORDINATES LISTED HEREON ARE DERIVED FROM THE IOWA DEPARTMENT OF TRANSPORTATION REAL TIME NETWORK COLLECTED IN THE NAD83(2011) (Epoch 2010.0000) NETWORK REF FRAME AND ARE PROVIDED FOR USE IN RECOVERY OF MONUMENT ONLY.

JOB:	17112
DRAWN:	D. THOMA
NOT TO SCALE	
DATE:	12/27/2017

WEST QUARTER CORNER 36-83-3W  
 NORTHWEST CORNER 36-83-3W  
 SURVEY 8/23/17



I HEREBY CERTIFY THAT THIS LAND SURVEYING DOCUMENT WAS PREPARED AND THE RELATED SURVEY WORK WAS PERFORMED BY ME OR UNDER MY DIRECT PERSONAL SUPERVISION AND THAT I AM A DULY LICENSED PROFESSIONAL LAND SURVEYOR UNDER THE LAWS OF THE STATE OF IOWA.

SIGNATURE: *[Signature]* DATE: 12/21/18  
 LEO P. BONIFAZI  
 LICENSE NO. 13480  
 SHEETS COVERED BY THIS SEAL: THIS SHEET ONLY  
 MY LICENSE RENEWAL DATE IS DECEMBER 31, 2019

SCHNOOR-BONIFAZI ENGINEERING & SURVEYING, LC  
 431-FIFTH AVENUE SW  
 CEDAR RAPIDS, IA 52404  
 (319) 298-8888 (PHONE)  
 s-b-engineering.com



# UNITED STATES PUBLIC LAND SURVEY CORNER CERTIFICATE

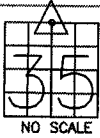
LAND SURVEY MONUMENTS SITUATED IN SECTION 35, TOWNSHIP 83  
NORTH, RANGE 3 WEST OF THE 5TH P.M., JONES COUNTY, IOWA

### CORNERS TO BE INDEXED

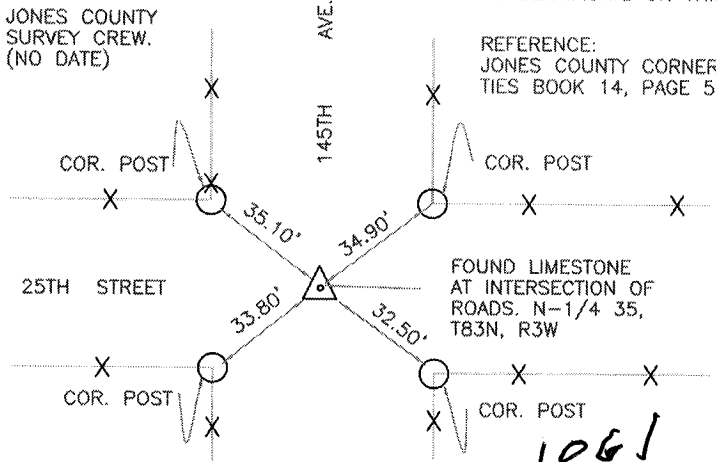
CORNER SECTION TOWNSHIP RANGE  
N-1/4 35 83N 3W

OFFICE FILE NO.

83335c\_111803



JONES COUNTY SURVEY CREW. (NO DATE)



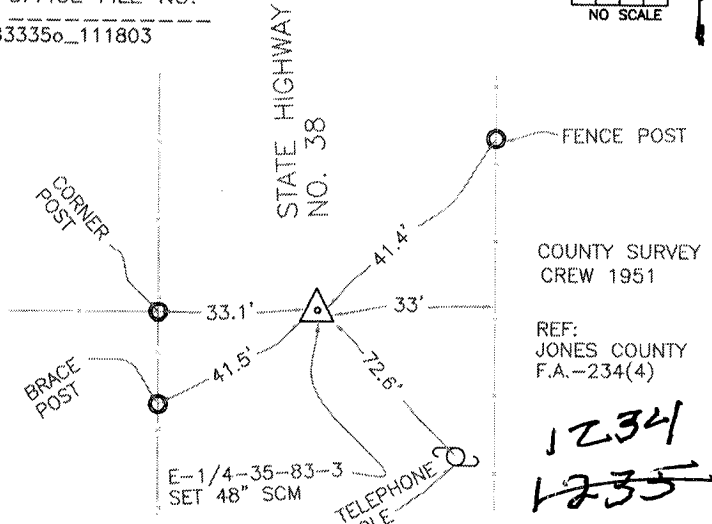
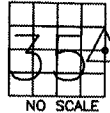
PREVIOUSLY RECORDED IN BOOK N/A, PAGE N/A  
MONUMENT DESCRIPTION AND HOW ESTABLISHED FOUND  
10"x12"x6" LIMESTONE 18" BELOW ROAD SURFACE. TIED OUT AS  
INDICATED. NORTH QUARTER CORNER SECTION 35, TOWNSHIP 83  
NORTH, RANGE 3 WEST OF THE 5TH PRINCIPAL MERIDIAN, JONES  
COUNTY, IOWA

### CORNERS TO BE INDEXED

CORNER SECTION TOWNSHIP RANGE  
E-1/4 35 83N 3W

OFFICE FILE NO.

83335o\_111803



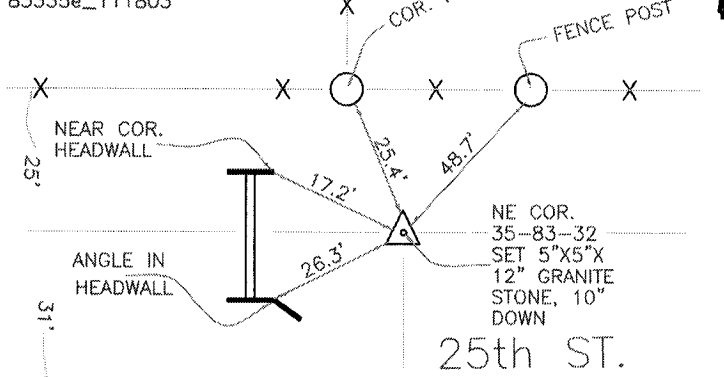
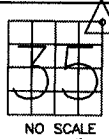
PREVIOUSLY RECORDED IN BOOK \_\_\_\_\_, PAGE \_\_\_\_\_  
MONUMENT DESCRIPTION AND HOW ESTABLISHED 1951  
COUNTY SURVEY CREW SET 48" STANDARD CONCRETE MONUMENT  
IN THE POSITION INDICATED AND SET TIES. EAST QUARTER CORNER  
SECTION 35, TOWNSHIP 83 NORTH, RANGE 3 WEST OF THE 5TH  
PRINCIPAL MERIDIAN, JONES COUNTY, IOWA.

### CORNERS TO BE INDEXED

CORNER SECTION TOWNSHIP RANGE  
NORTHEAST 35 83N 3W

OFFICE FILE NO.

83335e\_111803



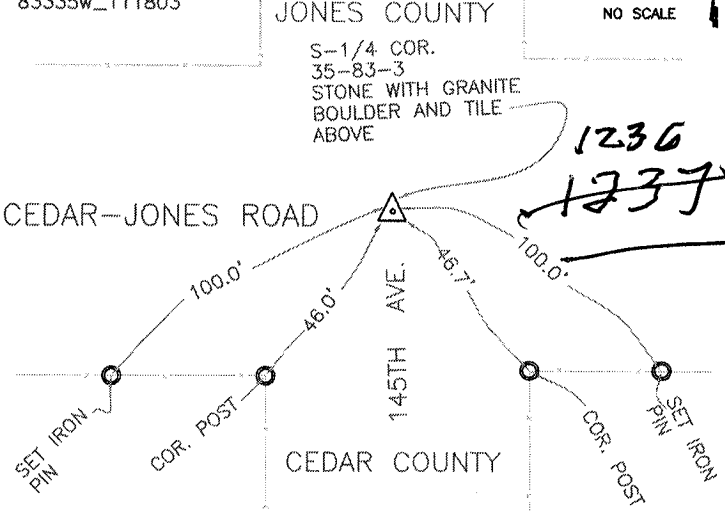
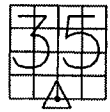
PREVIOUSLY RECORDED IN BOOK \_\_\_\_\_, PAGE \_\_\_\_\_  
MONUMENT DESCRIPTION AND HOW ESTABLISHED 1951  
COUNTY SURVEY CREW SET 5"x5"x12" GRANITE STONE 10" BELOW  
SURFACE IN THE POSITION INDICATED AND SET TIES. NORTHEAST  
CORNER SECTION 35, TOWNSHIP 83 NORTH, RANGE 3 WEST OF THE  
5TH PRINCIPAL MERIDIAN, JONES COUNTY, IOWA.

### CORNERS TO BE INDEXED

CORNER SECTION TOWNSHIP RANGE  
S-1/4 35 83N 3W

OFFICE FILE NO.

83335w\_111803



PREVIOUSLY RECORDED IN BOOK \_\_\_\_\_, PAGE \_\_\_\_\_  
MONUMENT DESCRIPTION AND HOW ESTABLISHED THIS  
INFORMATION FROM CEDAR COUNTY WITH NO DATE. STONE WITH  
GRANITE BOULDER AND TILE ABOVE ALONG WITH TIES INDICATED  
ON CARD. DATE PROBABLY (1951) SOUTH QUARTER CORNER SECTION  
35, TOWNSHIP 83 NORTH, RANGE 3 WEST OF THE 5TH PRINCIPAL  
MERIDIAN, JONES COUNTY, IOWA.

I hereby declare that this plat, survey or report was made by me or under my direct personal supervision and that I am a duly registered Land Surveyor under the laws of the State of Iowa.

Signed:

SEAL

JONES COUNTY ENGINEER'S OFFICE

19501 HWY. 64,  
ANAMOSA, IOWA,  
52205 (319)462-3785